

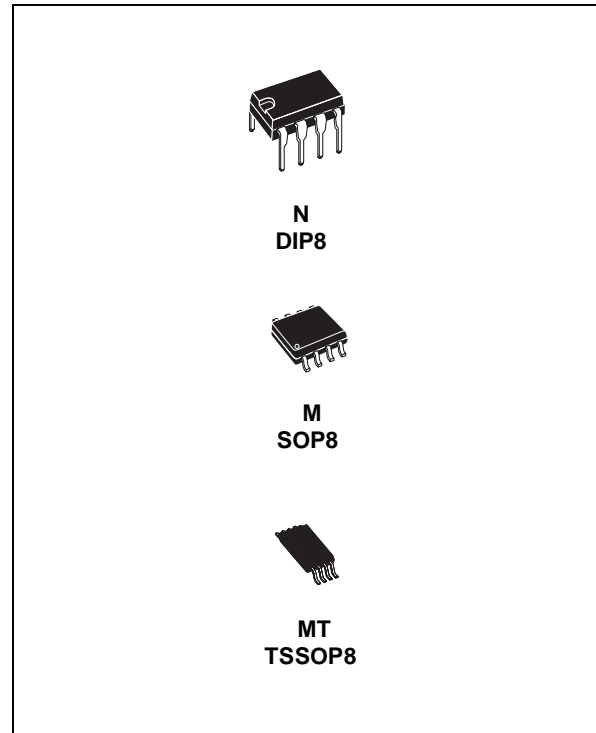
LOW POWER DUAL VOLTAGE COMPARATORS

- WIDE SINGLE SUPPLY VOLTAGE RANGE OR DUAL SUPPLIES +2V TO +36V OR ±1V TO ±18V
- VERY LOW SUPPLY CURRENT (0.4mA) INDEPENDENT OF SUPPLY VOLTAGE (1mW/comparator at +5V)
- LOW INPUT BIAS CURRENT: 25nA TYP
- LOW INPUT OFFSET CURRENT: ±5nA TYP
- INPUT COMMON-MODE VOLTAGE RANGE INCLUDES GROUND
- LOW OUTPUT SATURATION VOLTAGE: 250mV TYP. ($I_O = 4mA$)
- DIFFERENTIAL INPUT VOLTAGE RANGE EQUAL TO THE SUPPLY VOLTAGE
- TTL, DTL, ECL, MOS, CMOS COMPATIBLE OUTPUTS

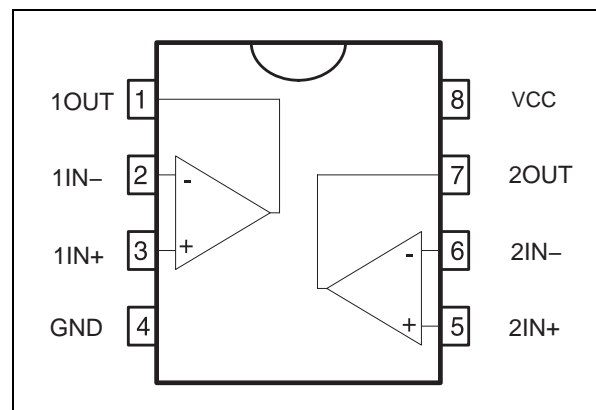
DESCRIPTION

This device consists of two independent low power voltage comparators designed specifically to operate from a single supply over a wide range of voltages. Operation from split power supplies is also possible.

These comparators also have a unique characteristic in that the input common-mode voltage range includes ground even though operated from a single power supply voltage.



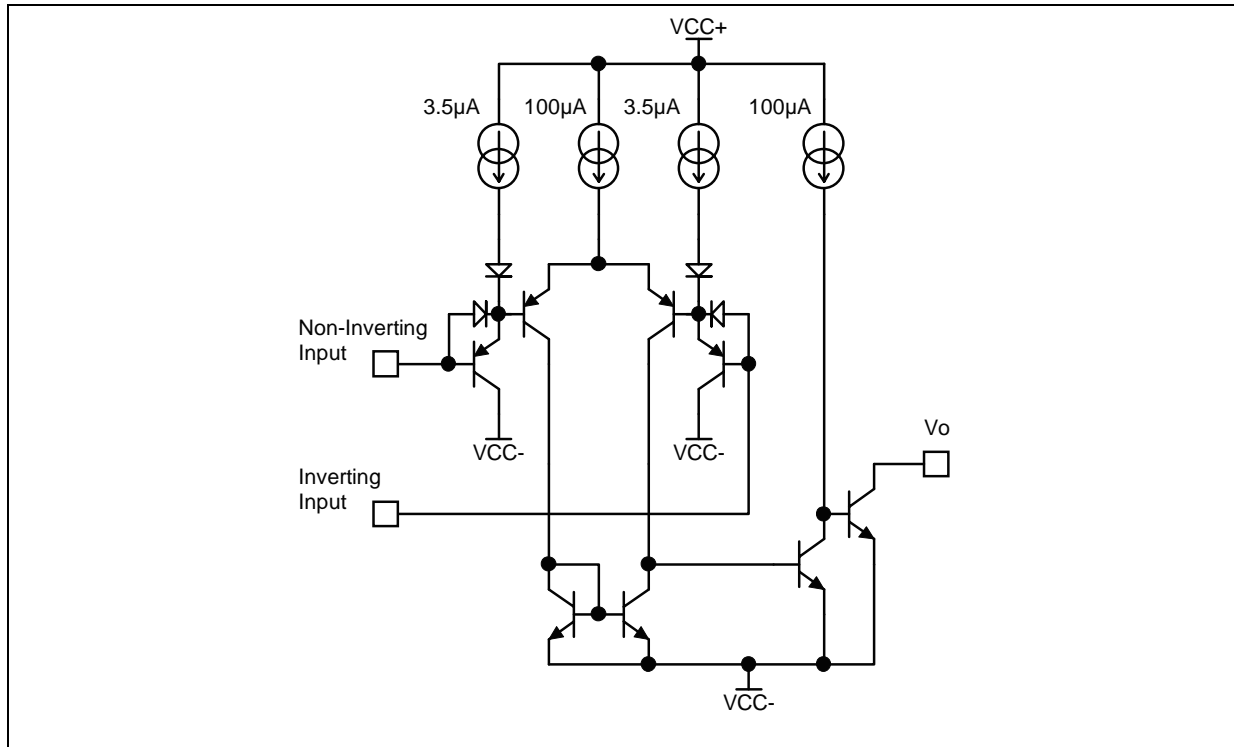
PIN CONNECTIONS (top view)



ORDERING INFORMATION

| DEVICE | Package Type | MARKING | Packing | Packing Qty |
|-------------|--------------|---------|---------|-------------|
| LM2903N | DIP8L | LM2903 | TUBE | 2000/box |
| LM2903M/TR | SOP8L | LM2903 | REEL | 2500/reel |
| LM2903MT/TR | TSSOP8L | LM2903 | REEL | 2500/reel |

SCHEMATIC DIAGRAM (1/2 LM2903)



ABSOLUTE MAXIMUM RATINGS

| Symbol | Parameter | Value | Unit | |
|----------------|--|-----------------------|--------------------|----|
| V_{CC} | Supply Voltage | ± 18 to 36 | V | |
| V_{ID} | Differential Input Voltage | ± 36 | V | |
| V_I | Input Voltage | -0.3 to +36 | V | |
| | Output Short-circuit to Ground ¹⁾ | Infinite | | |
| P_d | Power Dissipation ²⁾ | DIP8 SO8 TSSOP8 | 1250 710 625 | mW |
| $T_{Junction}$ | Junction Temperature | +150 | °C | |
| T_{stg} | Storage Temperature Range | -65 to +150 | °C | |

- Short-circuit from the output to V_{CC}^+ can cause excessive heating and eventual destruction. The maximum output current is approximately 20mA, independent of the magnitude of V_{CC}^+ .
- P_d is calculated with $T_{amb} = +25^\circ\text{C}$, $T_j = +150^\circ\text{C}$ and $R_{thja} = 100^\circ\text{C/W}$ for DIP8 package
 $= 175^\circ\text{C/W}$ for SO8 package
 $= 200^\circ\text{C/W}$ for TSSOP8 package

OPERATING CONDITIONS

| Symbol | Parameter | Value | Unit |
|------------|--------------------------------------|-----------------------|------|
| V_{icm} | Common Mode Input Voltage Range | 0 to $V_{CC}^+ - 1.5$ | V |
| T_{oper} | Operating Free-Air Temperature range | -40 to +125 | °C |

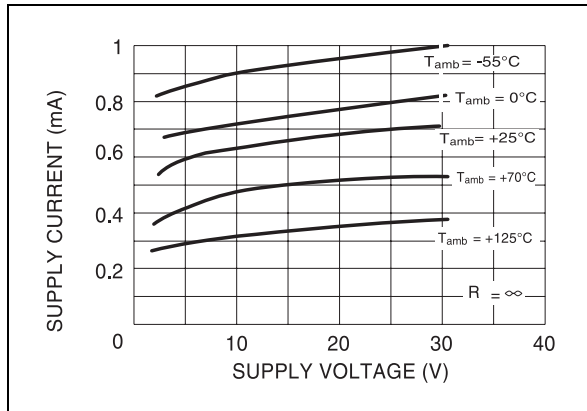
ELECTRICAL CHARACTERISTICS

$V_{CC}^+ = 5V$, $V_{CC}^- = GND$, $T_{amb} = 25^\circ C$ (unless otherwise specified)

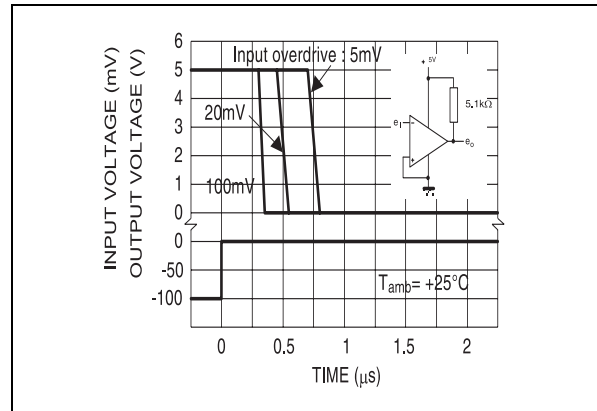
| Symbol | Parameter | Min. | Typ. | Max. | Unit |
|------------|--|--------|----------|------------------------------------|---------------|
| V_{IO} | Input Offset Voltage ¹⁾ $T_{amb} = +25^\circ C$ $T_{min} \leq T_{amb} \leq T_{max}$. | | 1 | 7 15 | mV |
| I_{IO} | Input Offset Current $T_{amb} = +25^\circ C$ $T_{min} \leq T_{amb} \leq T_{max}$. | | 5 | 50 150 | nA |
| I_{IB} | Input Bias Current ²⁾ $T_{amb} = +25^\circ C$ $T_{min} \leq T_{amb} \leq T_{max}$. | | 25 | 250 400 | nA |
| A_{VD} | Large Signal Voltage Gain ($V_{CC} = 15V, R_L = 15k\Omega, V_o = 1$ to $11V$) | 25 | 200 | | V/mV |
| I_{CC} | Supply Current (all comparators) $V_{CC} = 5V$, no load $V_{CC} = 30V$, no load | | 0.4 1 | 1 2.5 | mA |
| V_{ICM} | Input Common Mode Voltage Range ($V_{CC} = 30V$) ³⁾ $T_{amb} = +25^\circ C$ $T_{min} \leq T_{amb} \leq T_{max}$. | 0 0 | | $V_{CC}^+ - 1.5$ $V_{CC}^+ - 2$ | V |
| V_{ID} | Differential Input Voltage ⁴⁾ | | | V_{CC}^+ | V |
| V_{OL} | Low Level Output Voltage ($V_{id} = -1V, I_{sink} = 4mA$) $T_{amb} = +25^\circ C$ $T_{min} \leq T_{amb} \leq T_{max}$ | | 250 | 400 700 | mV |
| I_{OH} | High Level Output Current ($V_{CC} = V_o = 30V, V_{id} = 1V$) $T_{amb} = +25^\circ C$ $T_{min} \leq T_{amb} \leq T_{max}$ | | 0.1 | 1 | nA μA |
| I_{SINK} | Output Sink Current ($V_{id} = -1V, V_o = 1.5V$) | 6 | 16 | | mA |
| t_{RE} | Small Signal Response Time ⁵⁾ ($R_L = 5.1k\Omega$ to V_{CC}^+) | | 1.3 | | μs |
| t_{REL} | Large Signal Response Time ⁶⁾ TTL Input ($V_{ref} = +1.4V, R_L = 5.1k\Omega$ to V_{CC}^+) Output Signal at 50% of final value Output Signal at 95 % of final value | | | 500 1 | ns μs |

- At output switch point, $V_o = 1.4V$, $R_S = 0\Omega$ with V_{CC}^+ from 5V to 30V, and over the full input common-mode range (0V to $V_{CC}^+ - 1.5V$).
- The direction of the input current is out of the IC due to the PNP input stage. This current is essentially constant, independent of the state of the output, so no loading charge exists on the reference of input lines
- The input common-mode voltage of either input signal voltage should not be allowed to go negative by more than 0.3V. The upper end of the common-mode voltage range is $V_{CC}^+ - 1.5V$, but either or both inputs can go to +30V without damage.
- Positive excursions of input voltage may exceed the power supply level. As long as the other voltage remains within the common-mode range, the comparator will provide a proper output state.
The low input voltage state must not be less than -0.3V (or 0.3V below the negative power supply, if used)
- The response time specified is for a 100mV input step with 5mV overdrive.
- Maximum values are guaranteed by design & evaluation.

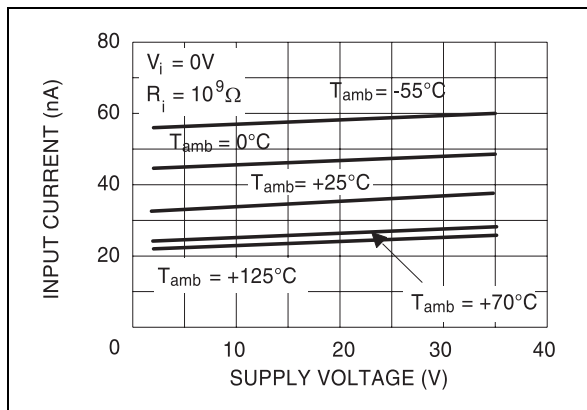
SUPPLY CURRENT versus SUPPLY VOLTAGE



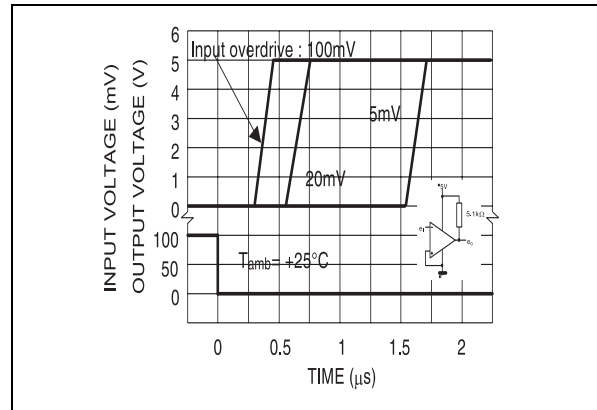
RESPONSE TIME FOR VARIOUS INPUT OVERDRIVES - NEGATIVE TRANSITION



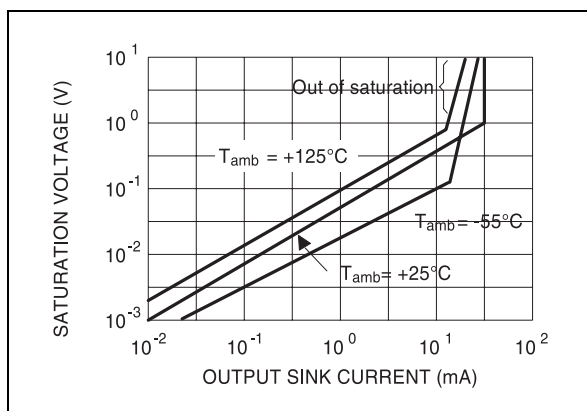
INPUT CURRENT versus SUPPLY VOLTAGE



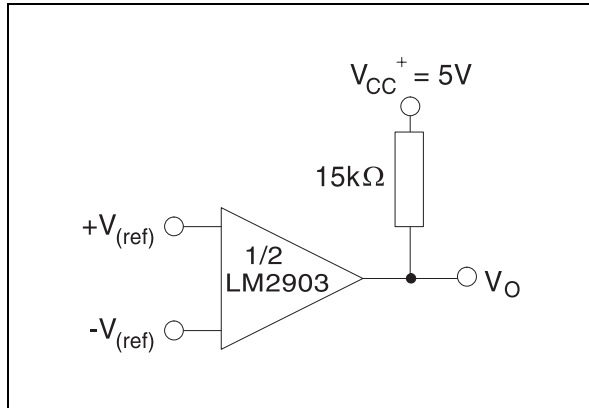
RESPONSE TIME FOR VARIOUS INPUT OVERDRIVES - POSITIVE TRANSITION



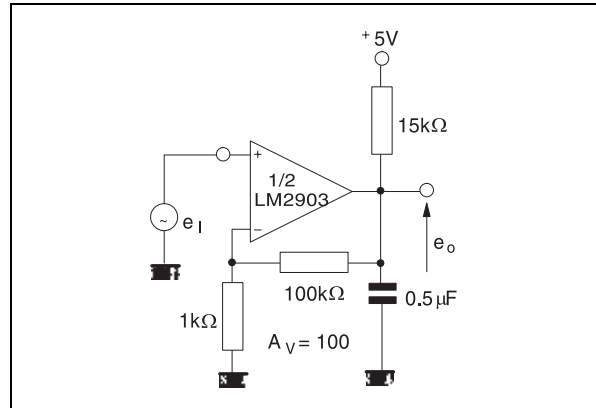
OUTPUT SATURATION VOLTAGE versus OUTPUT CURRENT



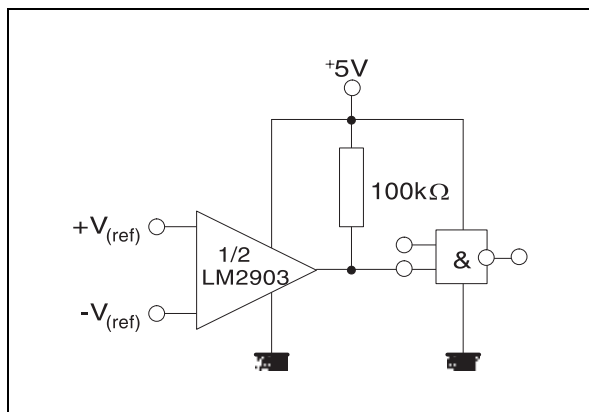
TYPICAL APPLICATIONS
BASIC COMPARATOR



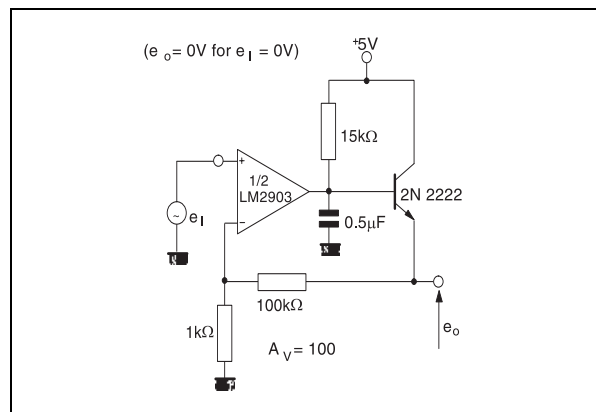
LOW FREQUENCY OP AMP



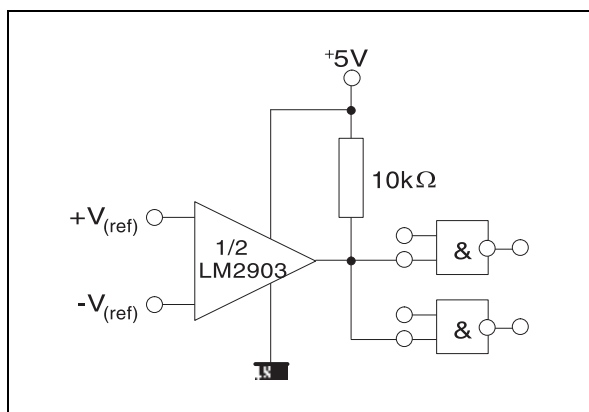
DRIVING CMOS



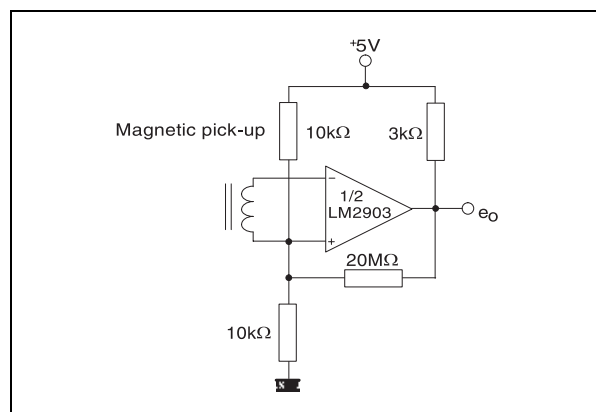
LOW FREQUENCY OP AMP



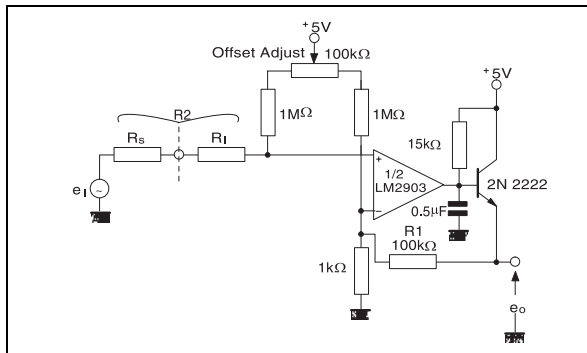
DRIVING TTL



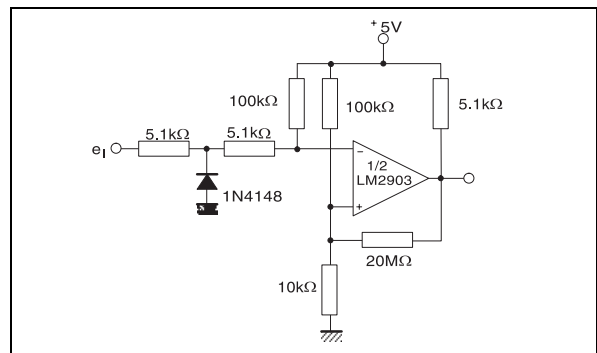
TRANSDUCER AMPLIFIER



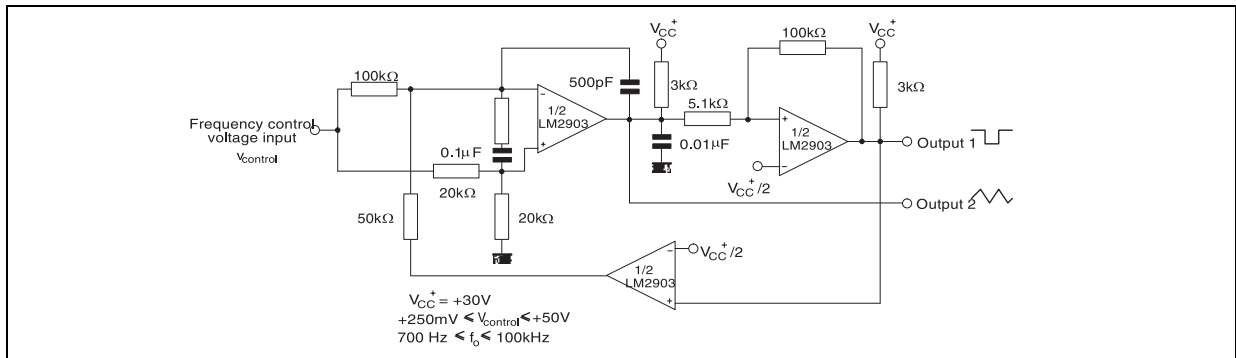
LOW FREQUENCY OP AMP WITH OFFSET ADJUST



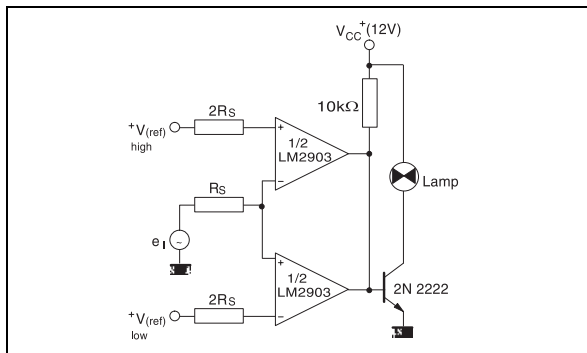
ZERO CROSSING DETECTOR (single power supply)



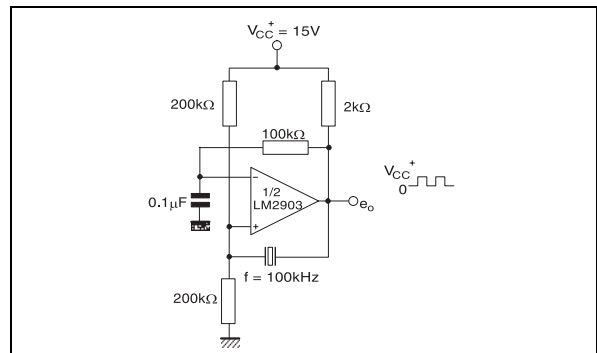
TWO-DECADE HIGH-FREQUENCY VCO



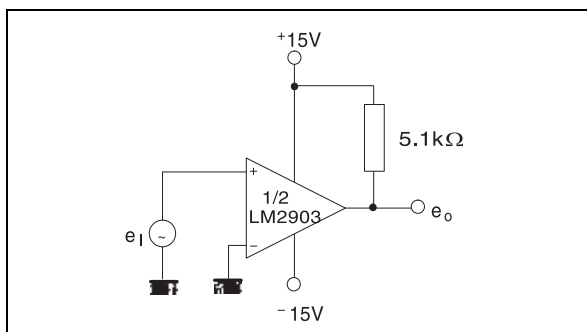
LIMIT COMPARATOR



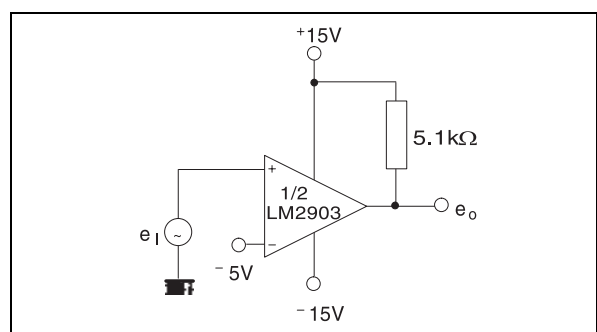
CRYSTAL CONTROLLED OSCILLATOR



**SPLIT-SUPPLY APPLICATIONS
ZERO CROSSING DETECTOR**

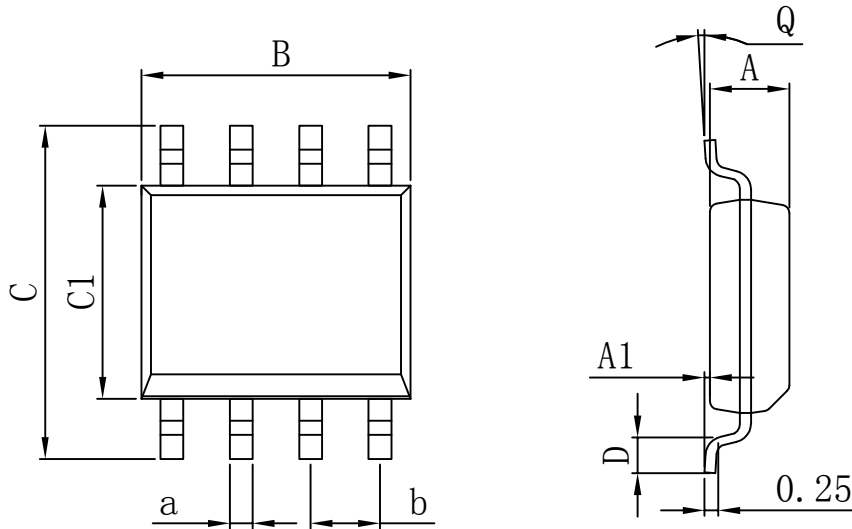


COMPARATOR WITH A NEGATIVE REFERENCE



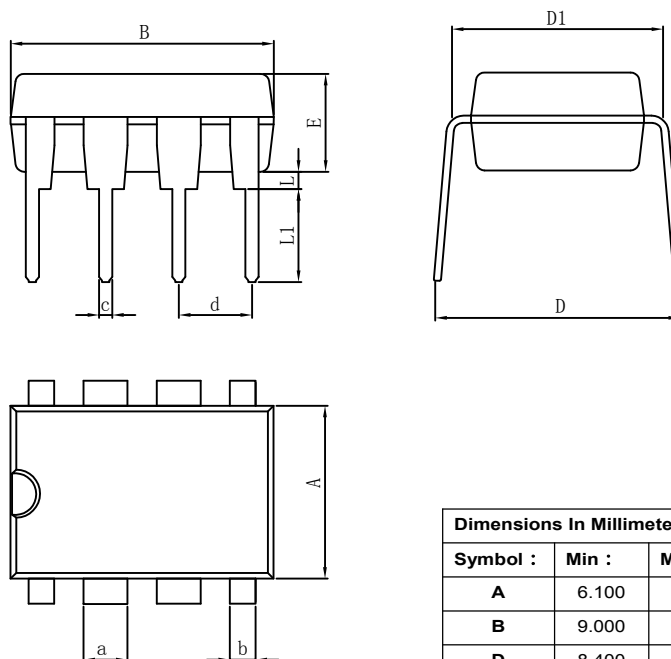
PACKAGE

SOP8



| Dimensions In Millimeters | | | | | |
|---------------------------|-------|-------|----------|-----------|-------|
| Symbol : | Min : | Max : | Symbol : | Min : | Max : |
| A | 4.520 | 4.620 | D | 0.400 | 0.950 |
| A1 | 0.100 | 0.250 | Q | 0° | 8° |
| B | 4.800 | 5.100 | a | 0.420 TYP | |
| C | 5.800 | 6.250 | b | 1.270 TYP | |
| C1 | 3.800 | 4.000 | | | |

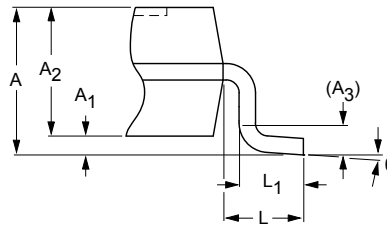
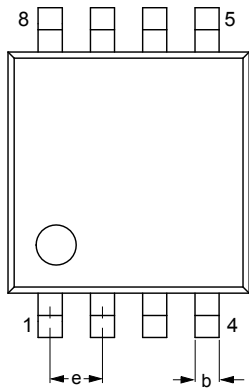
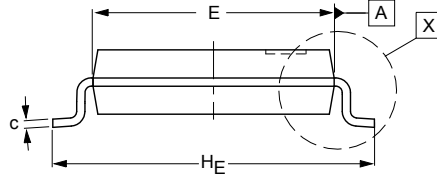
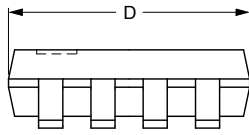
DIP8



| Dimensions In Millimeters | | | | | |
|---------------------------|-------|-------|----------|-----------|-------|
| Symbol : | Min : | Max : | Symbol : | Min : | Max : |
| A | 6.100 | 6.680 | L1 | 3.000 | 3.600 |
| B | 9.000 | 9.500 | a | 1.524 TYP | |
| D | 8.400 | 9.000 | b | 0.889 TYP | |
| D1 | 7.420 | 7.820 | c | 0.457 TYP | |
| E | 3.100 | 3.550 | d | 2.540 TYP | |
| L | 0.500 | 0.700 | | | |

PACKAGE

TSSOP8



| Dimensions In Millimeters | | | | | |
|---------------------------|-------|-------|----------|-----------|-------|
| Symbol : | Min : | Max : | Symbol : | Min : | Max : |
| A | 0.750 | 1.100 | L1 | 0.330 | 0.470 |
| A1 | 0 | 0.150 | θ | 0° | 8° |
| A2 | 0.750 | 0.950 | b | 0.130 TYP | |
| D | 2.900 | 3.100 | C | 0.150 TYP | |
| E | 2.900 | 3.100 | e | 0.650 TYP | |
| L | 0.400 | 0.600 | | | |

Important statement:

Huaguan Semiconductor Co,Ltd. reserves the right to change the products and services provided without notice. Customers should obtain the latest relevant information before ordering, and verify the timeliness and accuracy of this information.

Customers are responsible for complying with safety standards and taking safety measures when using our products for system design and machine manufacturing to avoid potential risks that may result in personal injury or property damage.

Our products are not licensed for applications in life support, military, aerospace, etc., so we do not bear the consequences of the application of these products in these fields.

Our documentation is only permitted to be copied without any tampering with the content, so we do not accept any responsibility or liability for the altered documents.

单击下面可查看定价，库存，交付和生命周期等信息

[>>HGSEMI\(华冠\)](#)