

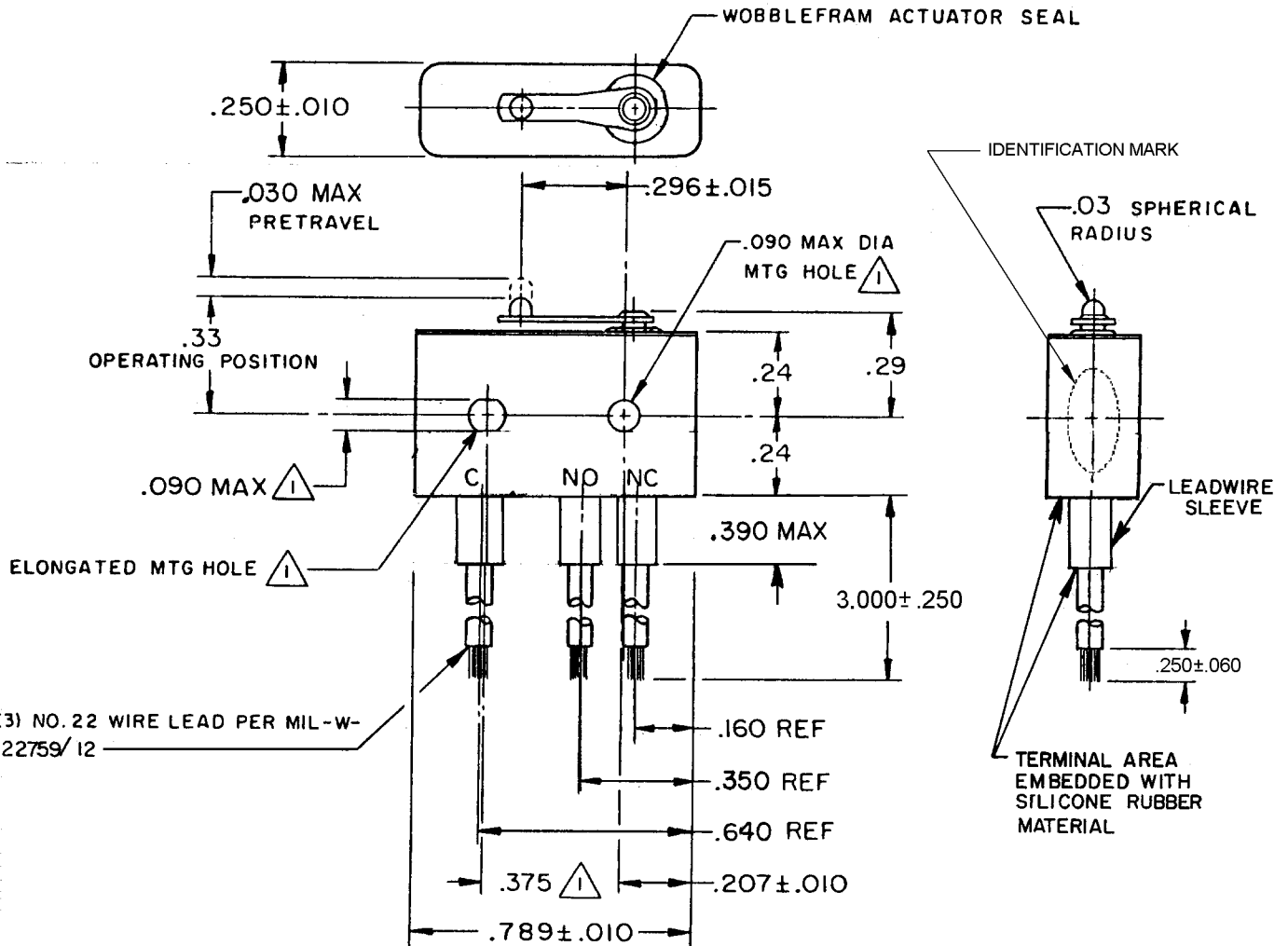
MICRO SWITCH

FREERPORT ILLINOIS, U.S.A
A DIVISION OF HONEYWELL
FED. MFG. CODE 91929

SWITCH - BASIC

CATALOG LISTING

16HM32

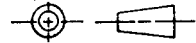


NOTES

- 1 - MOUNTING HOLES WILL ACCEPT PINS OR SCREWS OF .087 MAX DIA ON .375 ± .002 CENTERS
- 2 - FOR USE IN TEMPERATURE RANGE -85°F TO +500°F (-65°C TO 260°C) (DOWN TO -300°F (-184°C) IF WIRE LEADS ARE NOT FLEXED)
- 3 - SWITCH IS HERMETICALLY SEALED PER ENCLOSURE DESIGN SYMBOL 5 OF MIL-PRF-8805
- 4 - ALL EXPOSED PARTS ARE OF CORROSION RESISTANT MATERIALS
- 5 - WEIGHT OF SWITCH ONLY IS .026 LB MAX.
- 6 - DO NOT APPLY MORE THAN 1 1/2 INCH LBS OF TORQUE WHEN TIGHTENING MOUNTING SCREWS

THIS DRAWING COVERS A PROPRIETARY ITEM AND IS THE PROPERTY OF MICRO SWITCH, A DIVISION OF HONEYWELL. THIS DRAWING IS NOT TO BE COPIED OR USED WITHOUT THE APPROVAL OF MICRO SWITCH.

THIRD ANGLE PROJECTION



CHARACTERISTICS

OPERATING FORCE ----- 7 OZ MAX

RELEASE FORCE ----- 1 OZ MIN

DIFFERENTIAL TRAVEL --- .0003-.006

OVERTRAVEL ----- .003 MIN

ELECTRICAL DATA

CONTACT ARRANGEMENT
S P D T

LINE VOLTAGE	INDUCTIVE LOAD	RESISTIVE LOAD
28 VDC	1 AMP	3 AMP
115 VAC (400 CYCLE)	1 AMP	1 AMP

SCALE 2 TO 1

DO NOT SCALE PRINT

TOLERANCES

APPLY TO DESIGN UNITS. CONVERSIONS ARE ONLY FOR REFERENCE. UNLESS NOTED, TOLERANCES ARE ±

	DIM. mm	TOL. mm/in	DIM. in	TOL. mm/in
NO PLACES	X	1/04	X	0.01
ONE PLACE	X,X	0.47/018	X,X	0.38/015
TWO PLACES	X,XX	0.19/006	X,XX	0.13/005
THREE PLACES	X,XXX		X,XXX	
ANGLES				

DESIGN UNITS SI METRIC US CUSTOMARY

WEIGHT 5

Downloaded By: Heckman, Steven - 06 October 2021 13:19:10 UTC HEC: EAR99 TEC: EAR99 GOV: ESO1.0

16HM32

M

DRAWING NUMBER

ISSUE A

REVISIONS

A	0037763
VS	27FEB08

CHECK

VS 27FEB08

BLR 27FEB08

VS 27FEB08

FO-52848-A

DRAWN

REPLACES

RELEASE NO.

16HM32 A Released Honeywell proprietary & Confidential

单击下面可查看定价，库存，交付和生命周期等信息

[>>Honeywell\(霍尼韦尔\)](#)