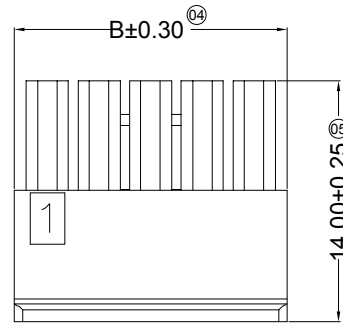
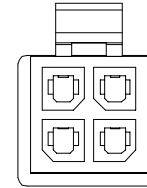
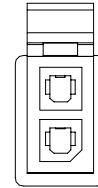
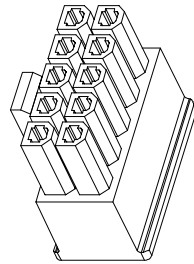
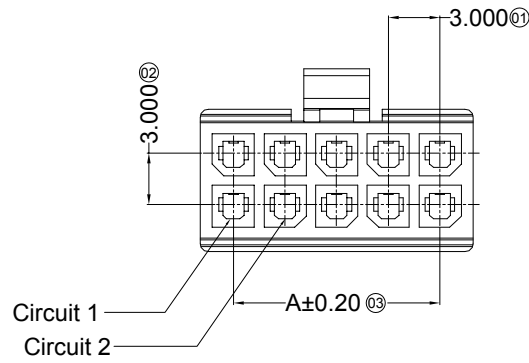


# Engineer Drawing

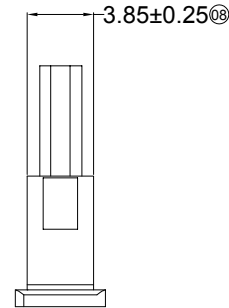
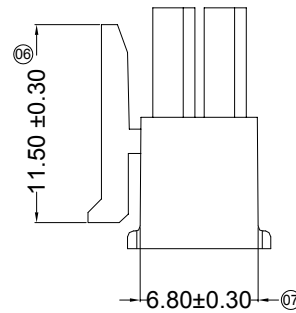
## Specifications :

- Voltage rating: 250V AC / DC
- Current rating: 5A AC / DC
- Withstanding voltage: 1000V AC/minute
- Temperature range: -40°C~+105°C
- Insulation resistance: ≥1000MΩ
- Contact resistance: ≤10mΩ
- After environmental testing: ≤20mΩ
- Material: N-PA66 94V-2

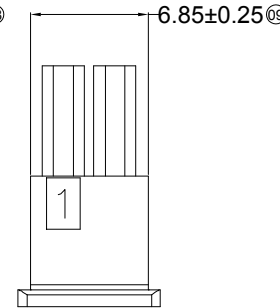
P-PA66 94V-0



2\*03P-2\*12P

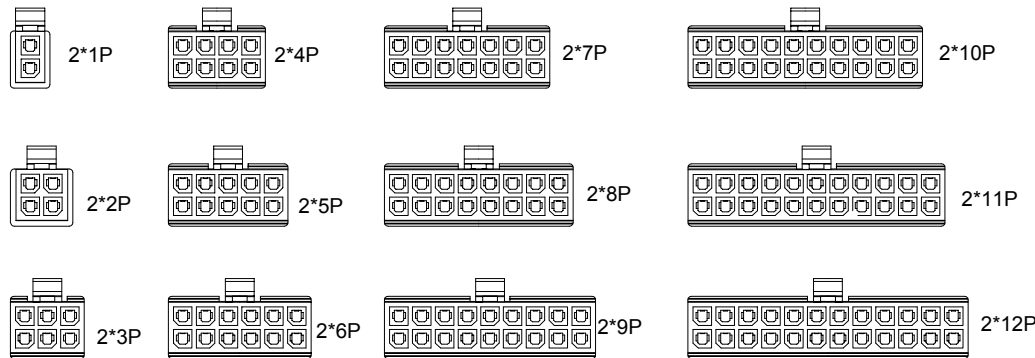


2\*01P



2\*02P

Poles	Dimensions(mm)		Poles	Dimensions(mm)	
	A	B		A	B
2*01			2*07	18.00	21.85
2*02	3.00		2*08	21.00	24.85
2*03	6.00	9.85	2*09	24.00	27.85
2*04	9.00	12.85	2*10	27.00	30.85
2*05	12.00	15.85	2*11	30.00	33.85
2*06	15.00	18.85	2*12	33.00	36.85



IPCW300H \*\* \* \* \* \* \*

① ② ③ ④ ⑤ ⑥ ⑦

- ① Series Type
- ② Pin code.
- ③ Material code.
- ④ Appereace code.
- ⑤ Internal code
- ⑥ Company code.
- ⑦ Other code.

TOLERANCE .X ±0.30 .XX ±0.20 .XXX ±0.10 UNLESS OTHERWISE SPECIFIED			<a href="http://www.i-ncp.com">www.i-ncp.com</a>	
	PART NO. IPCW300H XX		TITLE: Pitch 3.0mm housing	
	DRAWING NO. IPCW300H			
		SHEET 1 OF 1	UNITS mm	SCALE 1:1
				REV. 01

单击下面可查看定价，库存，交付和生命周期等信息

[>>INCP](#)