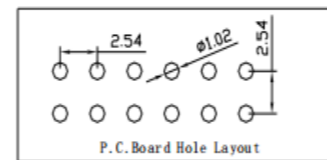
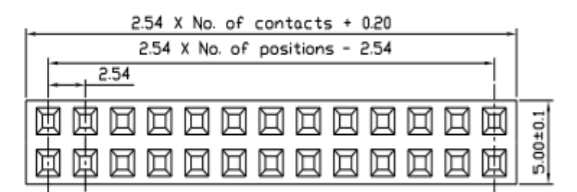
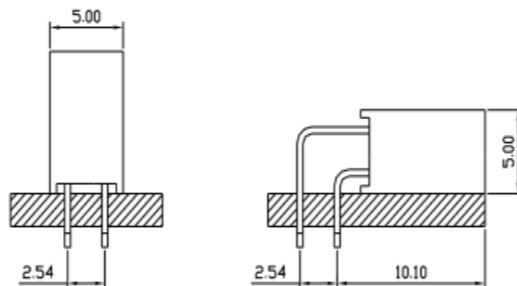
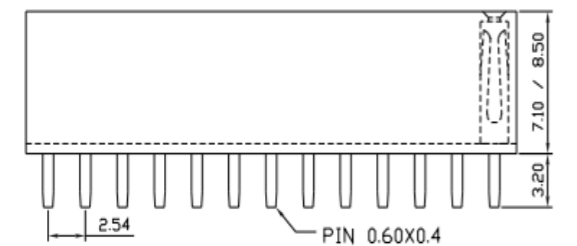
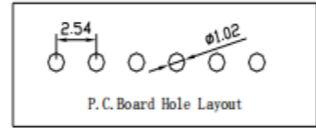
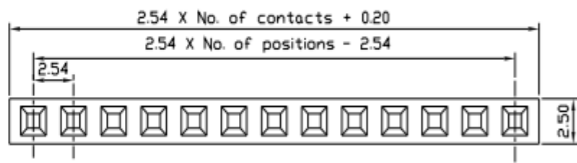
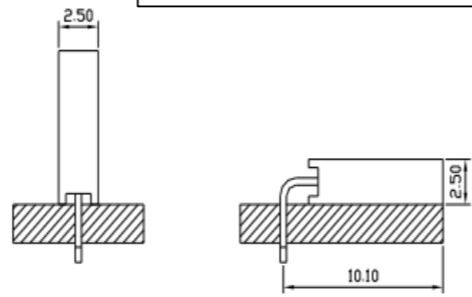
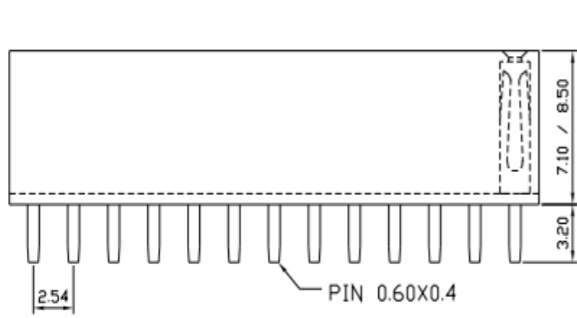
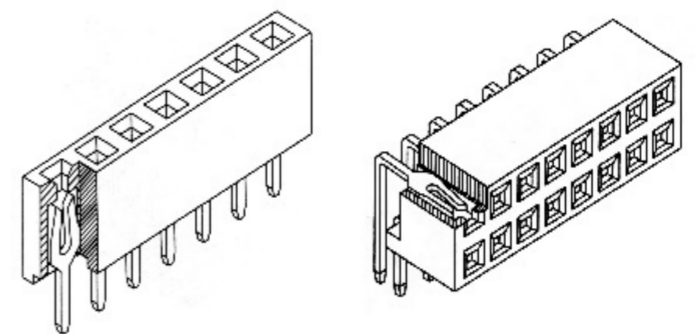


# Engineer Drawing



**SPECIFICATIONS:**  
 Current Rating: 3.0 AMP  
 Contact Resistance: 30m $\Omega$  Max  
 Insulation Resistance: 1000M $\Omega$  Min  
 Withstand Voltage: 600VAC/minute  
 Operation Temperature: -40°C to +105°C

**MATERIALS:**  
 Contact Material: Copper Alloy  
 Contact Plating: Gold or Tin over 50 $\mu$  Ni  
 Insulator: Glass Filled Polyester(UL94V-0)  
 Standard: PBT



IPCP 256 \* \* \* \* \*  
 ① ② ③ ④ ⑤ ⑥ ⑦ ⑧

- ① Series Type
- ② Pitch
- ③ Connector Code
- ④ Pin Code
- ⑤ Internal Code
- ⑥ Appereace Code
- ⑦ Serial Code
- ⑧ Other Code

		<a href="http://www.i-ncp.com">www.i-ncp.com</a>	
PART NO IPCP256Fxx		NAME: HEADER FEMALE 2PIN 180° 90°	
DRAWING NO IPCP256F 07			
	SHEET 1 OF 1	UNITS:mm	SCALE:1:1
			REV.01

单击下面可查看定价，库存，交付和生命周期等信息

[>>INCP](#)