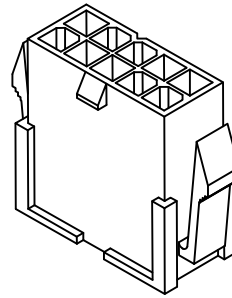
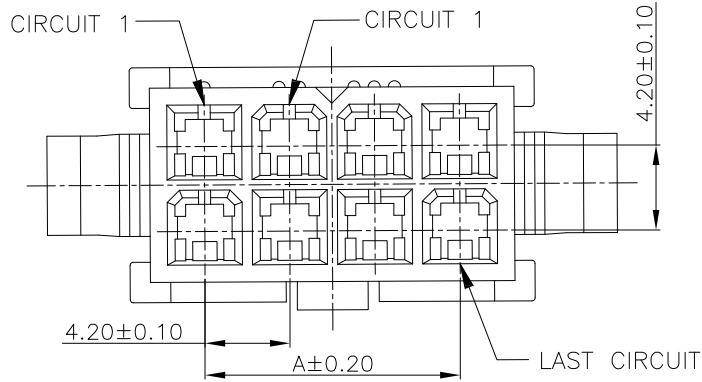


# Engineer Drawing

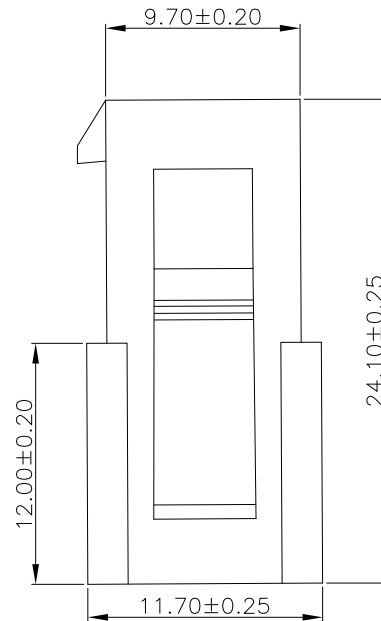
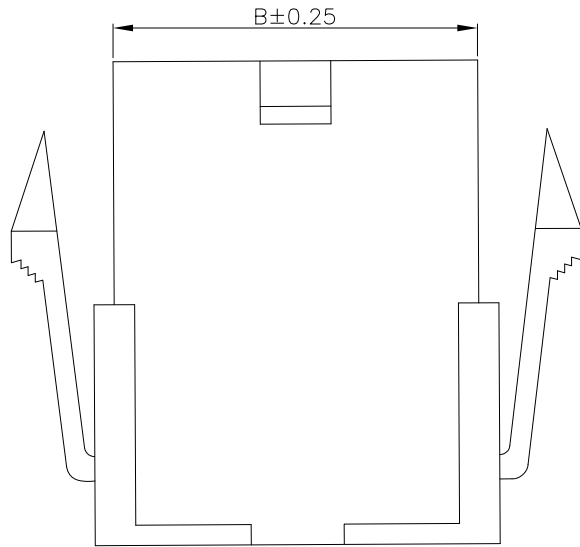
RoHS



3D view 0.5:1

**NOTE:**

- 1.MATERIAL SPECIFICATION:
  - 1-1.HOUSING: PA66
- 2.MECHANICAL PERFORMANCE:
  - 2-1.RETENTIVITY FORCE: 2.5KGF/pin min
  - 2-2.DURABILITY: 30 CYCLES.
- 3.ELECTRICAL PERFORMANCE:
  - 3-1.CURRENT RATING: 9A
  - RATED VOLTAGE : 600V AC/DC
  - 3-2.CONTACT RESISTANCE: 30 mΩ MAX
  - 3-3.INSULATION RESISTANCE: 1000MΩ Min
  - 3-4.DIELECTRIC WITHSTANDING : 1500V
- 4.ENVIRONMENTAL PERFORMANCE:
  - 4-1.OPERATING TEMPERATURE: -25°C~+85°C.
- 5.PACKAGE SPEC: PE BAG



IPCW420H	**	*	*	*	*	*
①	②	③	④	⑤	⑥	⑦
① Series Type	② Pin code.	③ Material code	④ Appereace code	⑤ Ineral code	⑥ Company code.	⑦ Other code.

<p>TOLERANCE</p> <p>.X ± 0.35</p> <p>.XX ± 0.25</p> <p>.XXX ± 0.0</p> <p>ANGLES ±6°</p> <p>UNLESS OTHERWISE SPECIFIED</p>			<a href="http://www.i-ncp.com">www.i-ncp.com</a>		
	PART NO. IPCW420H xx		TITLE: Pitch 4.2mm Housing		
	DRAWING NO. IPCW420H06		Double row with ears		
SHEET 1 OF 1		UNITS mm	SCALE 1:1	REV. 01	

单击下面可查看定价，库存，交付和生命周期等信息

[>>INCP](#)