

## IGBT

TRENCHSTOP™ Performance technology

## IGW50N60TP

600V IGBT TRENCHSTOP™ Performance series

Data sheet

Industrial Power Control

High speed IGBT in Trench and Fieldstop technology

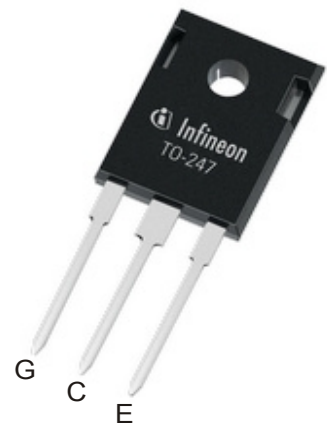
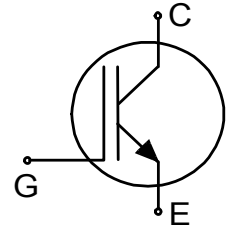
**Features:**

TRENCHSTOP™ technology offering

- very low  $V_{CEsat}$
- low turn-off losses
- short tail current
- low EMI
- maximum junction temperature 175°C
- qualified according to JEDEC for target applications
- Pb-free lead plating; RoHS compliant
- complete product spectrum and PSpice Models:  
<http://www.infineon.com/igbt/>

**Applications:**

- drives
- solar inverters
- uninterruptible power supplies
- converters with medium switching frequency



**Key Performance and Package Parameters**

| Type       | $V_{CE}$ | $I_C$ | $V_{CEsat}, T_{vj}=25^\circ\text{C}$ | $T_{vjmax}$ | Marking | Package    |
|------------|----------|-------|--------------------------------------|-------------|---------|------------|
| IGW50N60TP | 600V     | 50A   | 1.6V                                 | 175°C       | G50DTP  | PG-TO247-3 |



**Table of Contents**

Description ..... 2

Table of Contents ..... 3

Maximum Ratings ..... 4

Thermal Resistance ..... 4

Electrical Characteristics ..... 5

Electrical Characteristics Diagrams ..... 7

Package Drawing .....12

Testing Conditions .....13

Revision History .....14

Disclaimer .....14

**Maximum Ratings**

For optimum lifetime and reliability, Infineon recommends operating conditions that do not exceed 80% of the maximum ratings stated in this datasheet.

| Parameter   | Symbol      | Value          | Unit               |
|---|-------------|----------------|--------------------|
| Collector-emitter voltage, $T_{vj} \geq 25^{\circ}\text{C}$   | $V_{CE}$    | 600            | V                  |
| DC collector current, limited by $T_{vjmax}$<br>$T_C = 25^{\circ}\text{C}$ value limited by bondwire<br>$T_C = 100^{\circ}\text{C}$   | $I_C$       | 80.0<br>61.0   | A                  |
| Pulsed collector current, $t_p$ limited by $T_{vjmax}^{1)}$   | $I_{Cpuls}$ | 150.0          | A                  |
| Turn off safe operating area<br>$V_{CE} \leq 600\text{V}$ , $T_{vj} \leq 175^{\circ}\text{C}$ , $t_p = 1\mu\text{s}^{1)}$   | -           | 150.0          | A                  |
| Gate-emitter voltage  | $V_{GE}$    | $\pm 20$       | V                  |
| Short circuit withstand time<br>$V_{GE} = 15.0\text{V}$ , $V_{CC} \leq 400\text{V}$<br>Allowed number of short circuits < 1000<br>Time between short circuits: $\geq 1.0\text{s}$<br>$T_{vj} = 150^{\circ}\text{C}$ | $t_{SC}$    | 5              | $\mu\text{s}$      |
| Power dissipation $T_C = 25^{\circ}\text{C}$<br>Power dissipation $T_C = 100^{\circ}\text{C}$   | $P_{tot}$   | 319.2<br>159.6 | W                  |
| Operating junction temperature  | $T_{vj}$    | -40...+175     | $^{\circ}\text{C}$ |
| Storage temperature   | $T_{stg}$   | -55...+150     | $^{\circ}\text{C}$ |
| Soldering temperature,<br>wave soldering 1.6mm (0.063in.) from case for 10s   |             | 260            | $^{\circ}\text{C}$ |
| Mounting torque, M3 screw<br>Maximum of mounting processes: 3   | $M$         | 0.6            | Nm                 |

**Thermal Resistance**

| Parameter                                   | Symbol        | Conditions | Value |      |      | Unit |
|---|---------------|------------|-------|------|------|------|
|   |               |            | min.  | typ. | max. |      |
| <b>R<sub>th</sub> Characteristics</b>       |               |            |       |      |      |      |
| IGBT thermal resistance,<br>junction - case | $R_{th(j-c)}$ |            | -     | 0.36 | 0.47 | K/W  |

<sup>1)</sup> Defined by design. Not subject to production test.

**Electrical Characteristic, at  $T_{vj} = 25^{\circ}\text{C}$ , unless otherwise specified**

| Parameter                            | Symbol        | Conditions   | Value  |              |           | Unit          |
|--------------------------------------|---------------|--|--------|--------------|-----------|---------------|
|                                      |               |  | min.   | typ.         | max.      |               |
| <b>Static Characteristic</b>         |               |  |        |              |           |               |
| Collector-emitter breakdown voltage  | $V_{(BR)CES}$ | $V_{GE} = 0\text{V}, I_C = 0.20\text{mA}$  | 600    | -            | -         | V             |
| Collector-emitter saturation voltage | $V_{CESat}$   | $V_{GE} = 15.0\text{V}, I_C = 50.0\text{A}$<br>$T_{vj} = 25^{\circ}\text{C}$<br>$T_{vj} = 175^{\circ}\text{C}$ | -<br>- | 1.60<br>1.94 | 1.80<br>- | V             |
| Gate-emitter threshold voltage       | $V_{GE(th)}$  | $I_C = 0.80\text{mA}, V_{CE} = V_{GE}$   | 4.1    | 5.1          | 5.7       | V             |
| Zero gate voltage collector current  | $I_{CES}$     | $V_{CE} = 600\text{V}, V_{GE} = 0\text{V}$<br>$T_{vj} = 25^{\circ}\text{C}$<br>$T_{vj} = 175^{\circ}\text{C}$  | -<br>- | -<br>-       | 40<br>-   | $\mu\text{A}$ |
| Gate-emitter leakage current         | $I_{GES}$     | $V_{CE} = 0\text{V}, V_{GE} = 20\text{V}$  | -      | -            | 100       | nA            |
| Transconductance                     | $g_{fs}$      | $V_{CE} = 20\text{V}, I_C = 50.0\text{A}$  | -      | 78.0         | -         | S             |

**Electrical Characteristic, at  $T_{vj} = 25^{\circ}\text{C}$ , unless otherwise specified**

| Parameter  | Symbol      | Conditions  | Value |       |      | Unit |
|--|-------------|---|-------|-------|------|------|
|  |             |   | min.  | typ.  | max. |      |
| <b>Dynamic Characteristic</b>  |             |   |       |       |      |      |
| Input capacitance  | $C_{ies}$   | $V_{CE} = 25\text{V}, V_{GE} = 0\text{V}, f = 1\text{MHz}$  | -     | 1950  | -    | pF   |
| Output capacitance   | $C_{oes}$   |   | -     | 83    | -    |      |
| Reverse transfer capacitance   | $C_{res}$   |   | -     | 67    | -    |      |
| Gate charge  | $Q_G$       | $V_{CC} = 480\text{V}, I_C = 50.0\text{A},$<br>$V_{GE} = 15\text{V}$  | -     | 249.0 | -    | nC   |
| Internal emitter inductance measured 5mm (0.197 in.) from case   | $L_E$       |   | -     | 13.0  | -    | nH   |
| Short circuit collector current<br>Max. 1000 short circuits<br>Time between short circuits: $\geq 1.0\text{s}$ | $I_{C(SC)}$ | $V_{GE} = 15.0\text{V}, V_{CC} \leq 400\text{V},$<br>$t_{SC} \leq 5\mu\text{s}$<br>$T_{vj} = 150^{\circ}\text{C}$ | -     | 255   | -    | A    |

**Switching Characteristic, Inductive Load**

| Parameter | Symbol | Conditions | Value |      |      | Unit |
|-----------|--------|------------|-------|------|------|------|
|           |        |            | min.  | typ. | max. |      |

**IGBT Characteristic, at  $T_{vj} = 25^{\circ}\text{C}$** 

|                        |              |  |   |      |   |    |
|------------------------|--------------|--|---|------|---|----|
| Turn-on delay time     | $t_{d(on)}$  | $T_{vj} = 25^{\circ}\text{C},$   | - | 20   | - | ns |
| Rise time              | $t_r$        | $V_{CC} = 400\text{V}, I_C = 50.0\text{A},$<br>$V_{GE} = 0.0/15.0\text{V},$      | - | 30   | - | ns |
| Turn-off delay time    | $t_{d(off)}$ | $R_{G(on)} = 7.0\Omega, R_{G(off)} = 7.0\Omega,$                                 | - | 215  | - | ns |
| Fall time              | $t_f$        | $L\sigma = 32\text{nH}, C\sigma = 60\text{pF}$<br>$L\sigma, C\sigma$ from Fig. E | - | 18   | - | ns |
| Turn-on energy         | $E_{on}$     | Energy losses include "tail" and diode (IKW50N60DTP) reverse recovery.           | - | 1.53 | - | mJ |
| Turn-off energy        | $E_{off}$    |  | - | 0.85 | - | mJ |
| Total switching energy | $E_{ts}$     |  | - | 2.38 | - | mJ |

**Switching Characteristic, Inductive Load**

| Parameter  | Symbol       | Conditions   | Value |      |      | Unit |
|--|--------------|--|-------|------|------|------|
|  |              |  | min.  | typ. | max. |      |
| <b>IGBT Characteristic, at <math>T_{vj} = 175^{\circ}\text{C}</math></b> |              |  |       |      |      |      |
| Turn-on delay time   | $t_{d(on)}$  | $T_{vj} = 175^{\circ}\text{C}$ ,<br>$V_{CC} = 400\text{V}$ , $I_C = 50.0\text{A}$ ,<br>$V_{GE} = 0.0/15.0\text{V}$ ,<br>$R_{G(on)} = 7.0\Omega$ , $R_{G(off)} = 7.0\Omega$ ,<br>$L\sigma = 32\text{nH}$ , $C\sigma = 60\text{pF}$<br>$L\sigma$ , $C\sigma$ from Fig. E<br>Energy losses include "tail" and diode (IKW50N60DTP) reverse recovery. | -     | 21   | -    | ns   |
| Rise time  | $t_r$        |  | -     | 34   | -    | ns   |
| Turn-off delay time  | $t_{d(off)}$ |  | -     | 277  | -    | ns   |
| Fall time  | $t_f$        |  | -     | 55   | -    | ns   |
| Turn-on energy   | $E_{on}$     |  | -     | 2.25 | -    | mJ   |
| Turn-off energy  | $E_{off}$    |  | -     | 1.39 | -    | mJ   |
| Total switching energy   | $E_{ts}$     |  | -     | 3.64 | -    | mJ   |

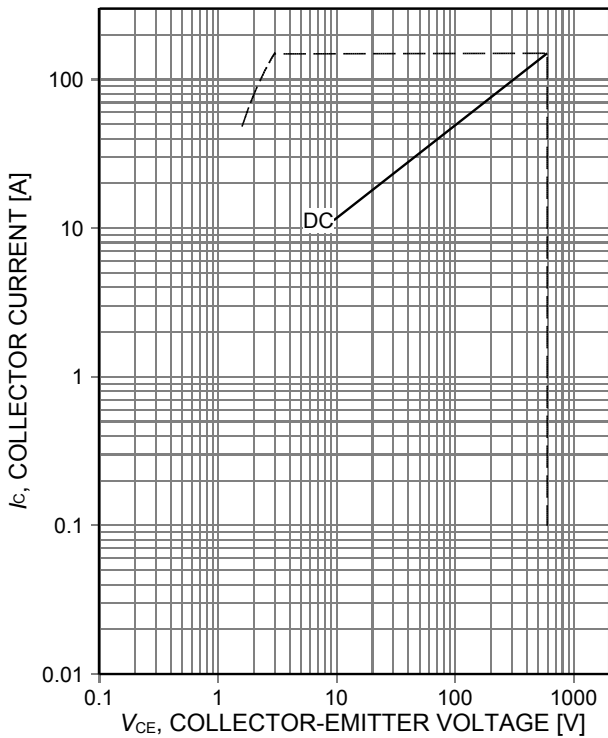


Figure 1. **Forward bias safe operating area**  
( $D=0$ ,  $T_C=25^\circ\text{C}$ ,  $T_J \leq 175^\circ\text{C}$ ;  $V_{GE}=15\text{V}$ )

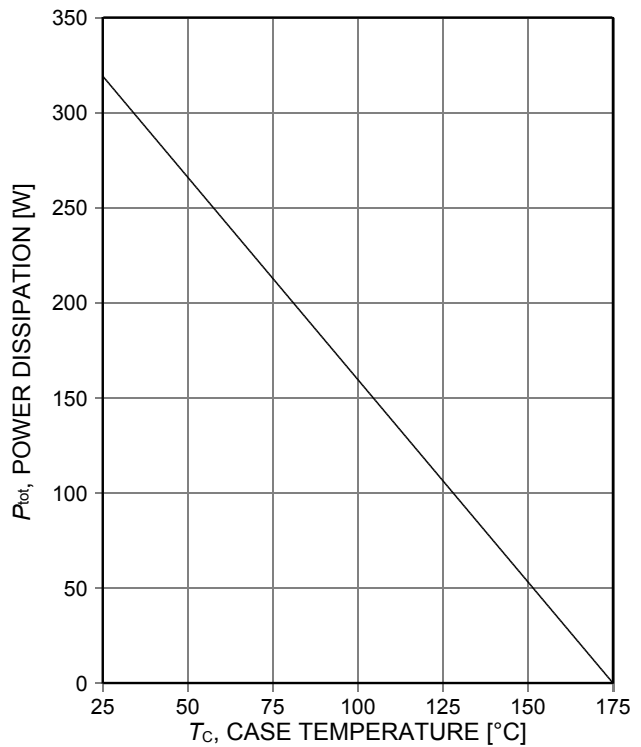


Figure 2. **Power dissipation as a function of case temperature**  
( $T_J \leq 175^\circ\text{C}$ )

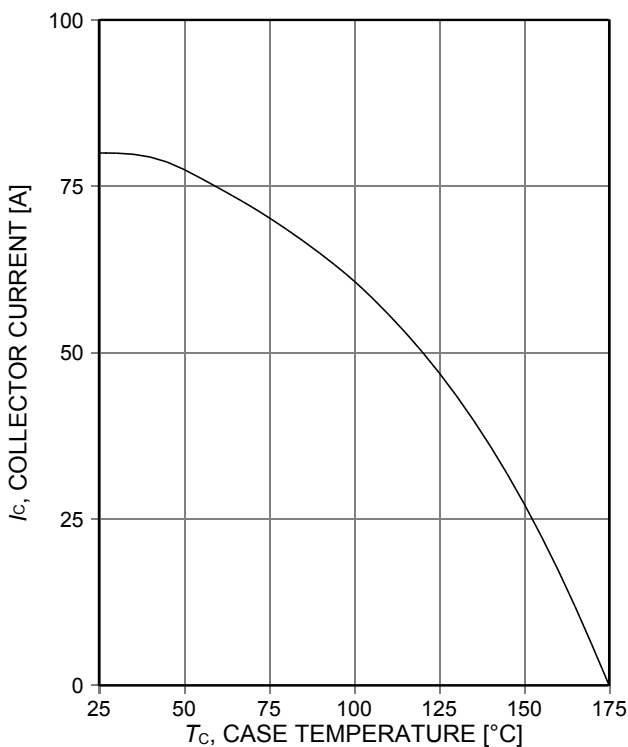


Figure 3. **Collector current as a function of case temperature**  
( $V_{GE} \geq 15\text{V}$ ,  $T_J \leq 175^\circ\text{C}$ )

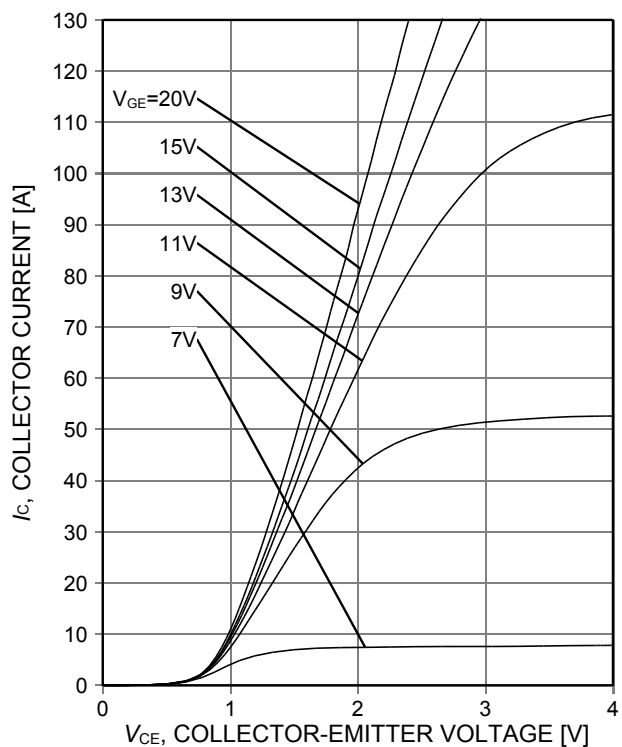


Figure 4. **Typical output characteristic**  
( $T_J=25^\circ\text{C}$ )

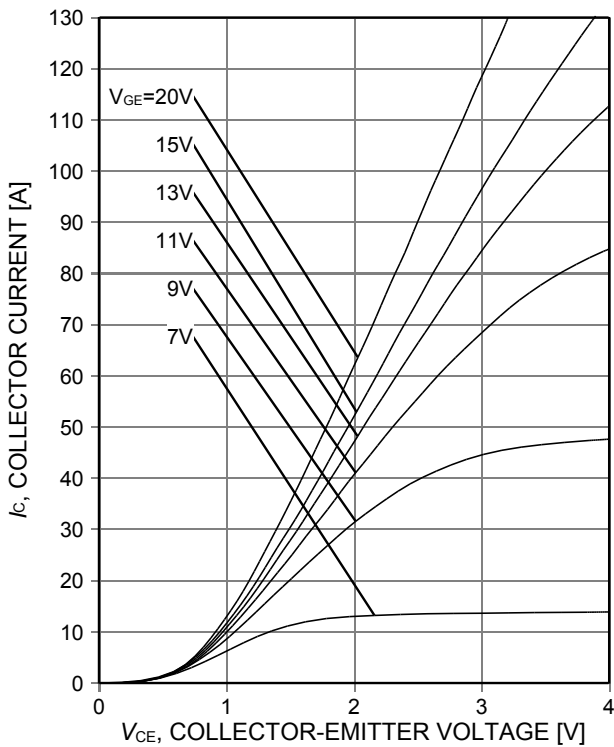


Figure 5. **Typical output characteristic**  
( $T_j=175^\circ\text{C}$ )

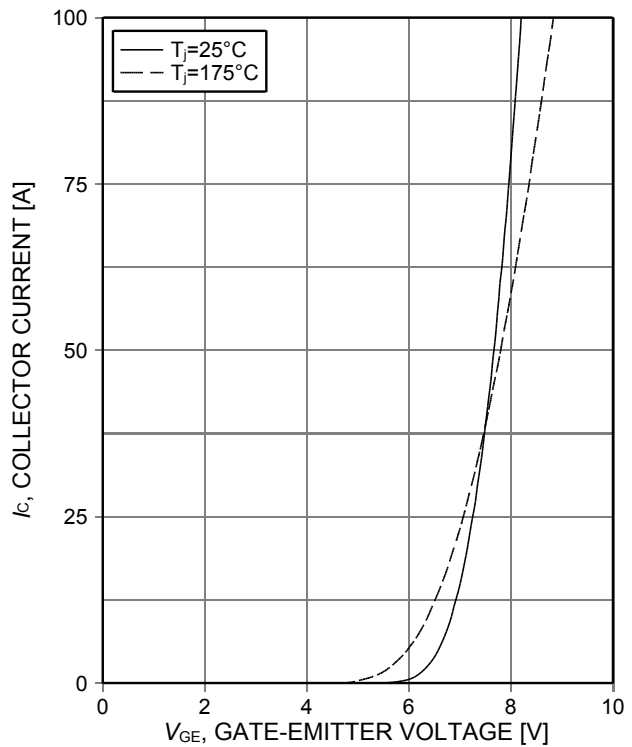


Figure 6. **Typical transfer characteristic**  
( $V_{CE}=20\text{V}$ )

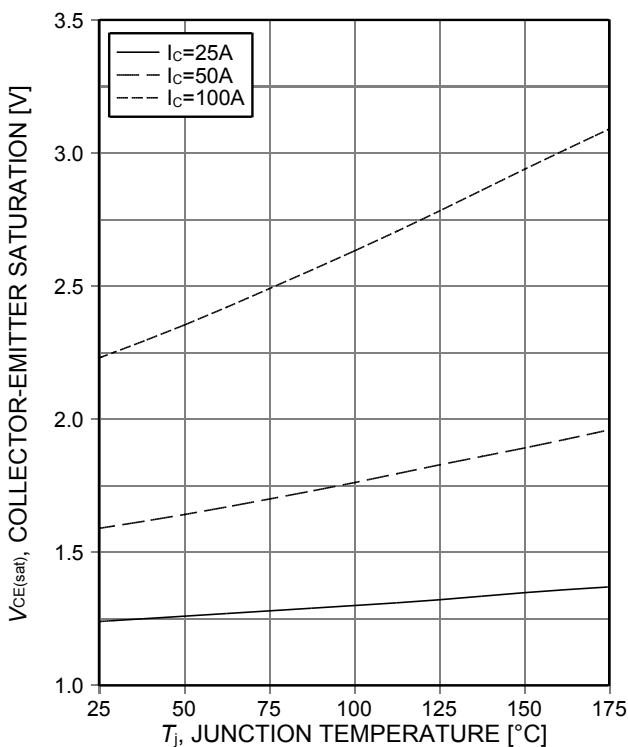


Figure 7. **Typical collector-emitter saturation voltage as a function of junction temperature**  
( $V_{GE}=15\text{V}$ )

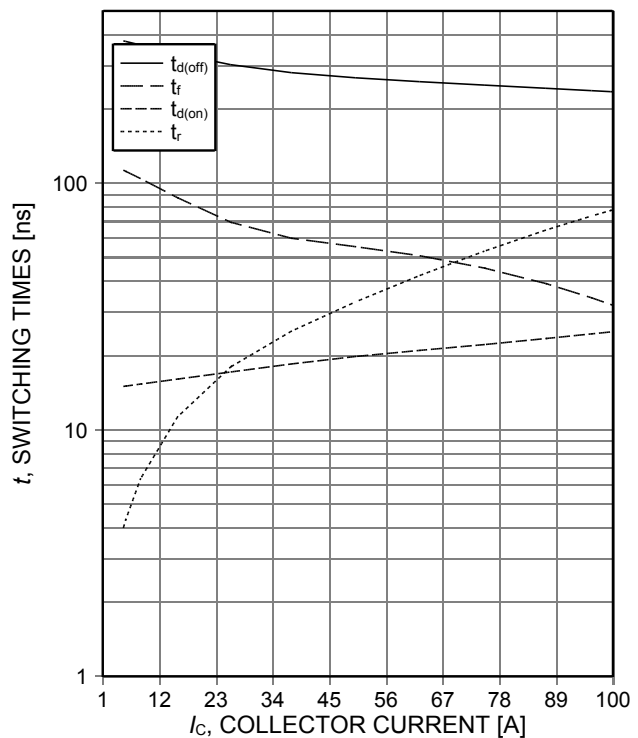


Figure 8. **Typical switching times as a function of collector current**  
(ind. load,  $T_j=175^\circ\text{C}$ ,  $V_{CE}=400\text{V}$ ,  $V_{GE}=15/0\text{V}$ ,  $r_G=7\Omega$ , test circuit in Fig. E)



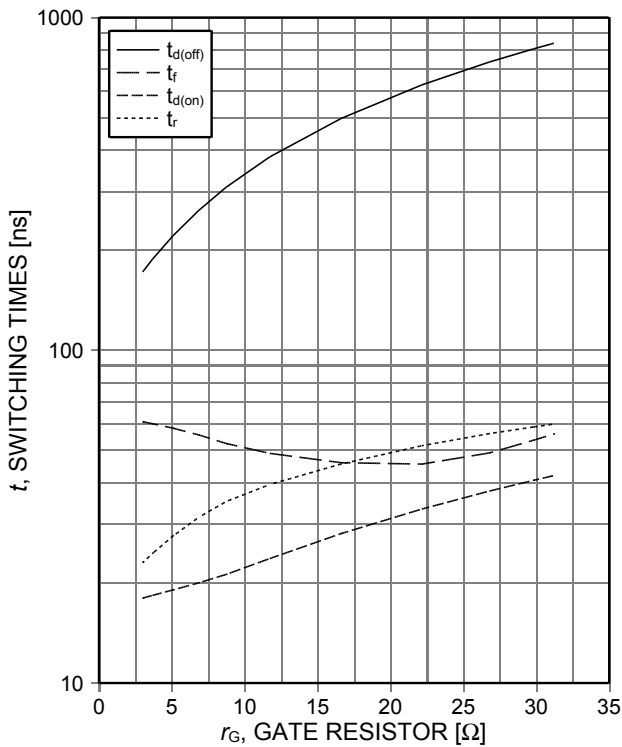


Figure 9. **Typical switching times as a function of gate resistor**  
(ind. load,  $T_j=175^\circ\text{C}$ ,  $V_{CE}=400\text{V}$ ,  $V_{GE}=15/0\text{V}$ ,  $I_C=50\text{A}$ , test circuit in Fig. E)

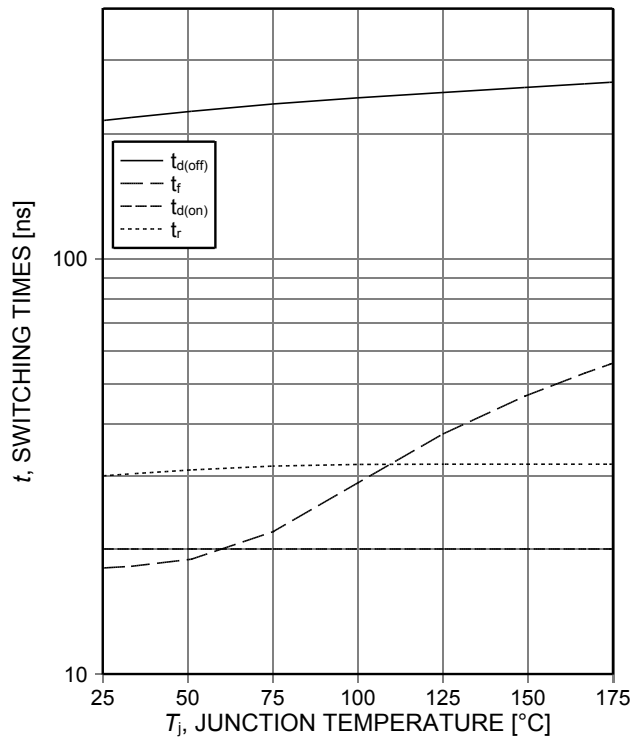


Figure 10. **Typical switching times as a function of junction temperature**  
(ind. load,  $V_{CE}=400\text{V}$ ,  $V_{GE}=15/0\text{V}$ ,  $I_C=50\text{A}$ ,  $r_G=7\Omega$ , test circuit in Fig. E)

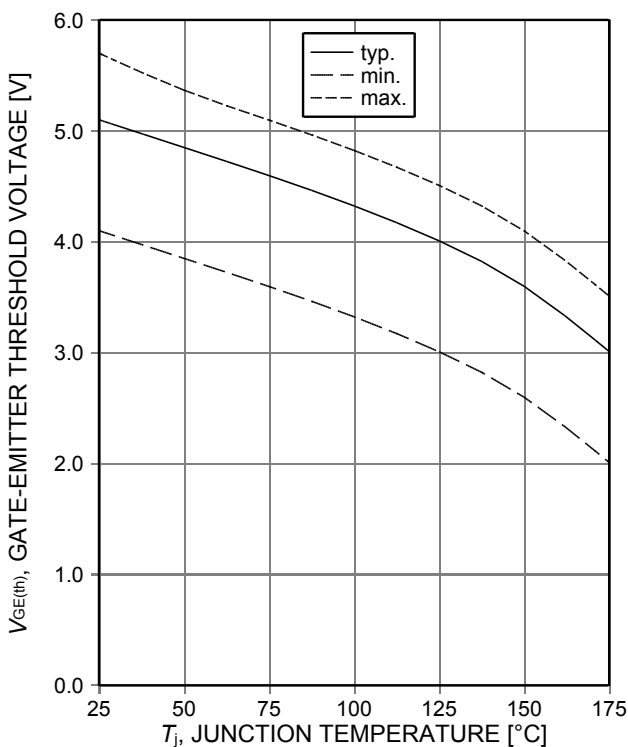


Figure 11. **Gate-emitter threshold voltage as a function of junction temperature**  
( $I_C=0,8\text{mA}$ )

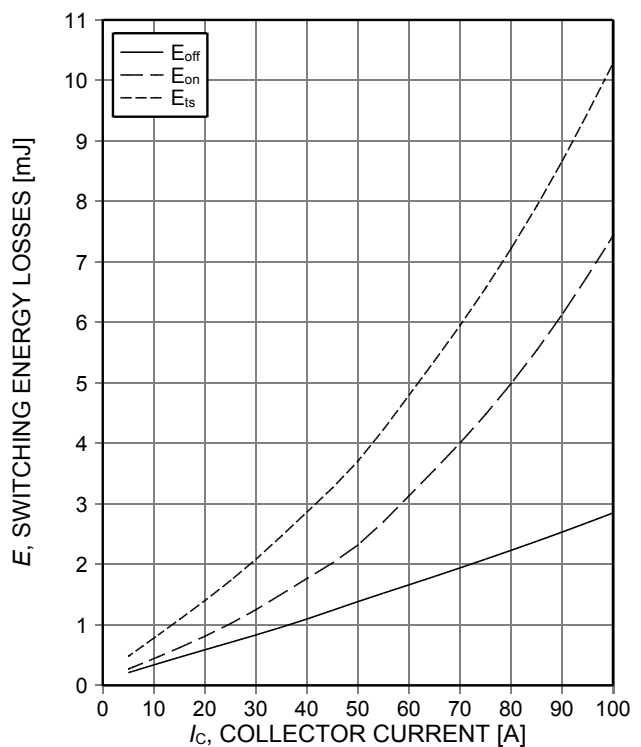


Figure 12. **Typical switching energy losses as a function of collector current**  
(ind. load,  $T_j=175^\circ\text{C}$ ,  $V_{CE}=400\text{V}$ ,  $V_{GE}=15/0\text{V}$ ,  $r_G=7\Omega$ , test circuit in Fig. E)

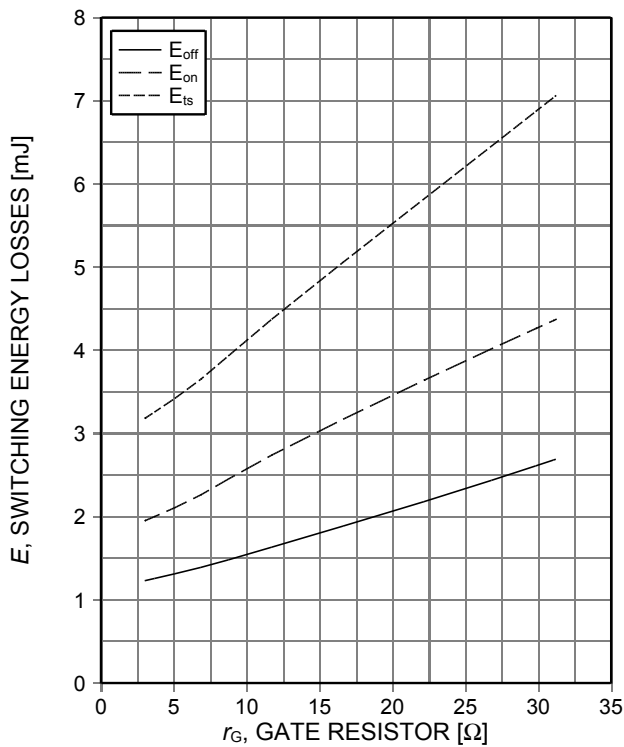


Figure 13. Typical switching energy losses as a function of gate resistor (ind. load,  $T_j=175^\circ\text{C}$ ,  $V_{CE}=400\text{V}$ ,  $V_{GE}=15/0\text{V}$ ,  $I_C=50\text{A}$ , test circuit in Fig. E)

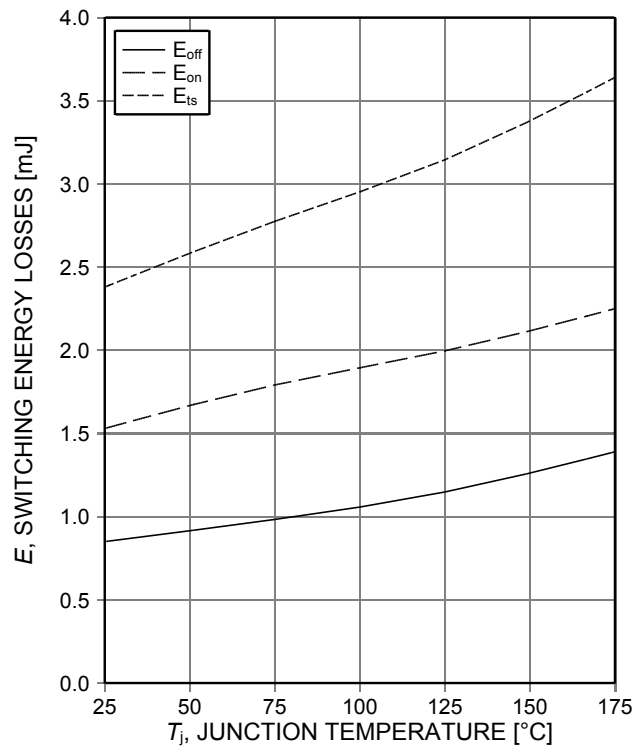


Figure 14. Typical switching energy losses as a function of junction temperature (ind load,  $V_{CE}=400\text{V}$ ,  $V_{GE}=15/0\text{V}$ ,  $I_C=50\text{A}$ ,  $r_G=7\Omega$ , test circuit in Fig. E)

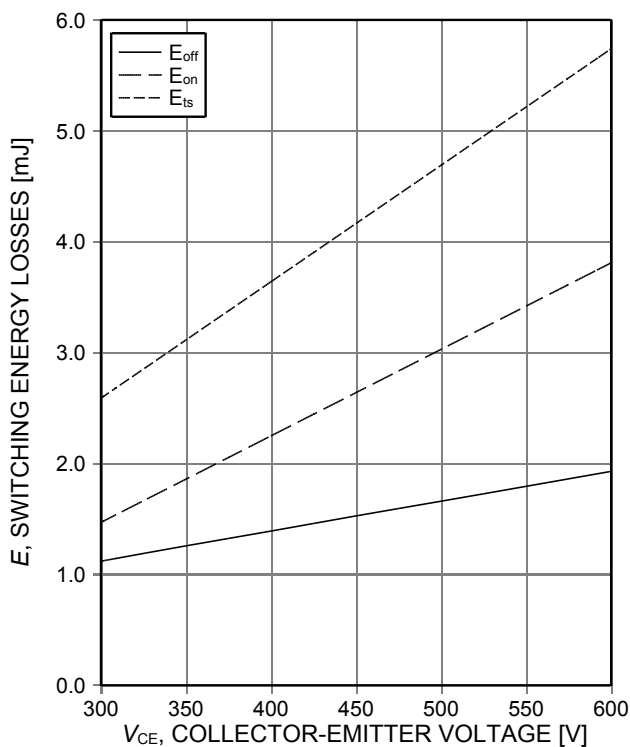


Figure 15. Typical switching energy losses as a function of collector emitter voltage (ind. load,  $T_j=175^\circ\text{C}$ ,  $V_{GE}=15/0\text{V}$ ,  $I_C=50\text{A}$ ,  $r_G=7\Omega$ , test circuit in Fig. E)

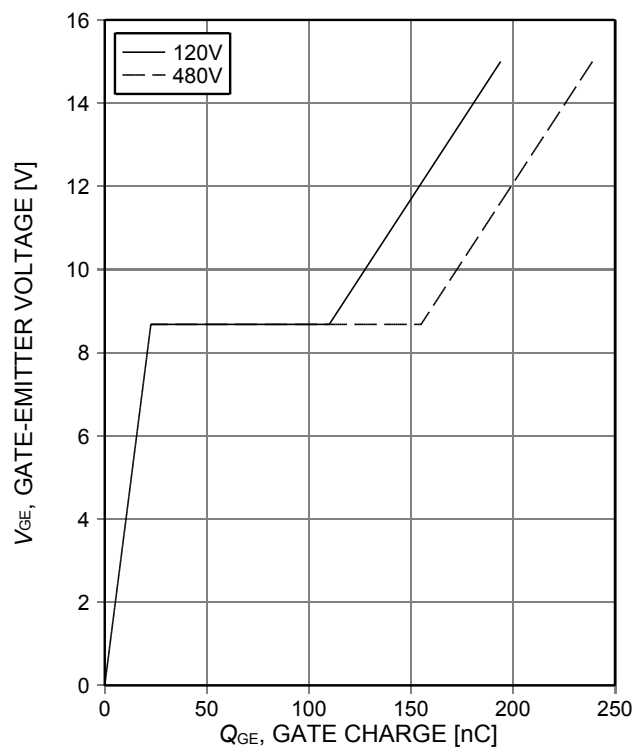


Figure 16. Typical gate charge ( $I_C=50\text{A}$ )

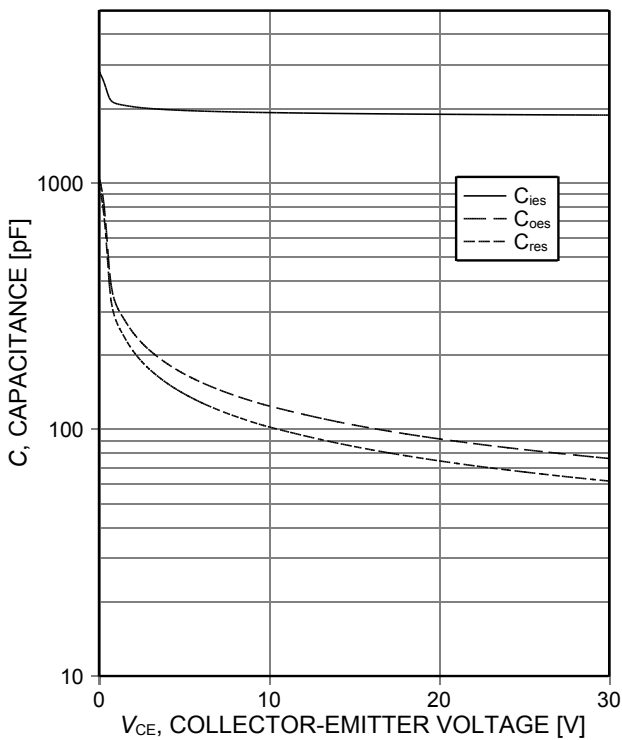


Figure 17. Typical capacitance as a function of collector-emitter voltage ( $V_{GE}=0V$ ,  $f=1MHz$ )

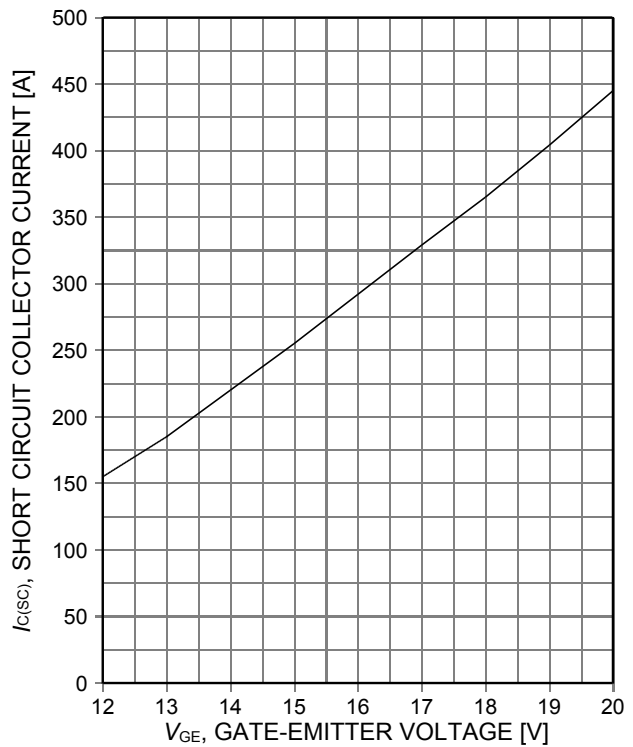


Figure 18. Typical short circuit collector current as a function of gate-emitter voltage ( $V_{CE}\leq 400V$ , start at  $T_J=150^\circ C$ )

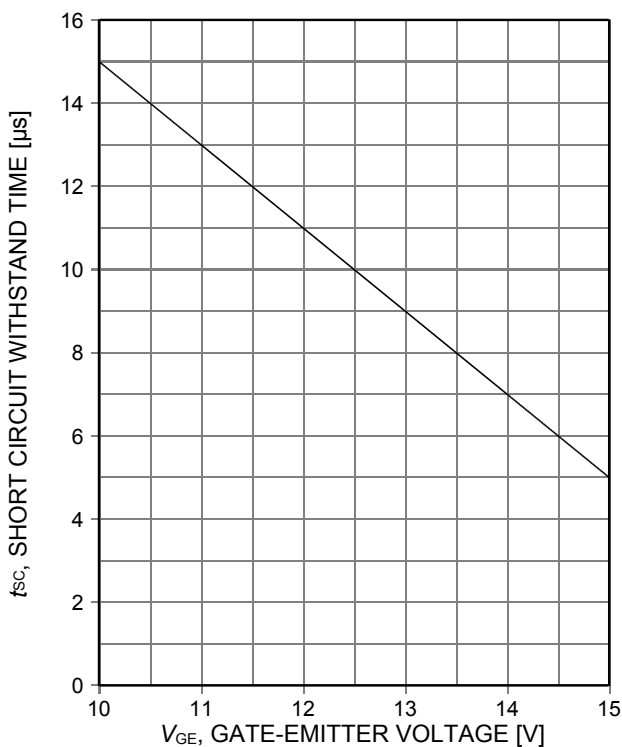


Figure 19. Short circuit withstand time as a function of gate-emitter voltage ( $V_{CE}\leq 400V$ , start at  $T_J\leq 150^\circ C$ )

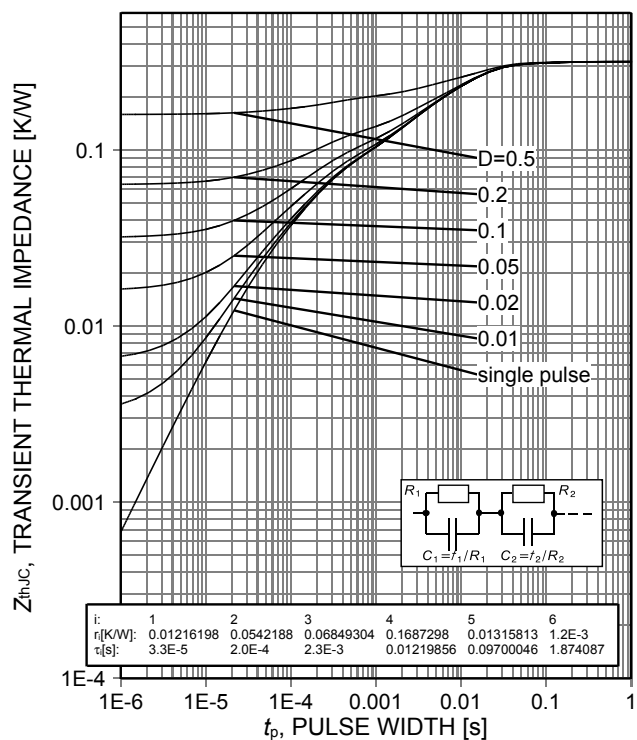
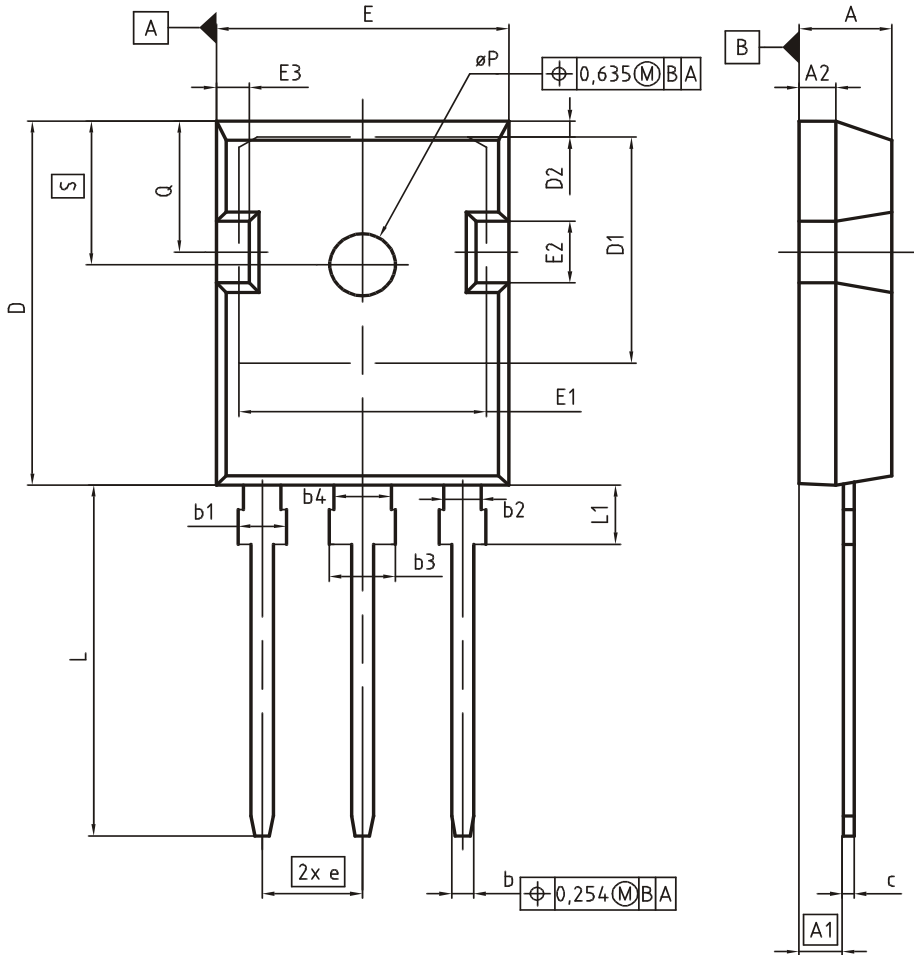


Figure 20. Typical IGBT transient thermal impedance ( $D=t_p/T$ )

Package Drawing PG-TO247-3



| DIM      | MILLIMETERS |       | INCHES      |       |
|----------|-------------|-------|-------------|-------|
|          | MIN         | MAX   | MIN         | MAX   |
| A        | 4.83        | 5.21  | 0.190       | 0.205 |
| A1       | 2.27        | 2.54  | 0.089       | 0.100 |
| A2       | 1.85        | 2.16  | 0.073       | 0.085 |
| b        | 1.07        | 1.33  | 0.042       | 0.052 |
| b1       | 1.90        | 2.41  | 0.075       | 0.095 |
| b2       | 1.90        | 2.16  | 0.075       | 0.085 |
| b3       | 2.87        | 3.38  | 0.113       | 0.133 |
| b4       | 2.87        | 3.13  | 0.113       | 0.123 |
| c        | 0.55        | 0.68  | 0.022       | 0.027 |
| D        | 20.80       | 21.10 | 0.819       | 0.831 |
| D1       | 16.25       | 17.65 | 0.640       | 0.695 |
| D2       | 0.95        | 1.35  | 0.037       | 0.053 |
| E        | 15.70       | 16.13 | 0.618       | 0.635 |
| E1       | 13.10       | 14.15 | 0.516       | 0.557 |
| E2       | 3.68        | 5.10  | 0.145       | 0.201 |
| E3       | 1.00        | 2.60  | 0.039       | 0.102 |
| e        | 5.44 (BSC)  |       | 0.214 (BSC) |       |
| N        | 3           |       | 3           |       |
| L        | 19.80       | 20.32 | 0.780       | 0.800 |
| L1       | 4.10        | 4.47  | 0.161       | 0.176 |
| $\phi P$ | 3.50        | 3.70  | 0.138       | 0.146 |
| Q        | 5.49        | 6.00  | 0.216       | 0.236 |
| S        | 6.04        | 6.30  | 0.238       | 0.248 |

DOCUMENT NO.  
Z8B00003327

SCALE

EUROPEAN PROJECTION

ISSUE DATE  
09-07-2010

REVISION  
05

Testing Conditions

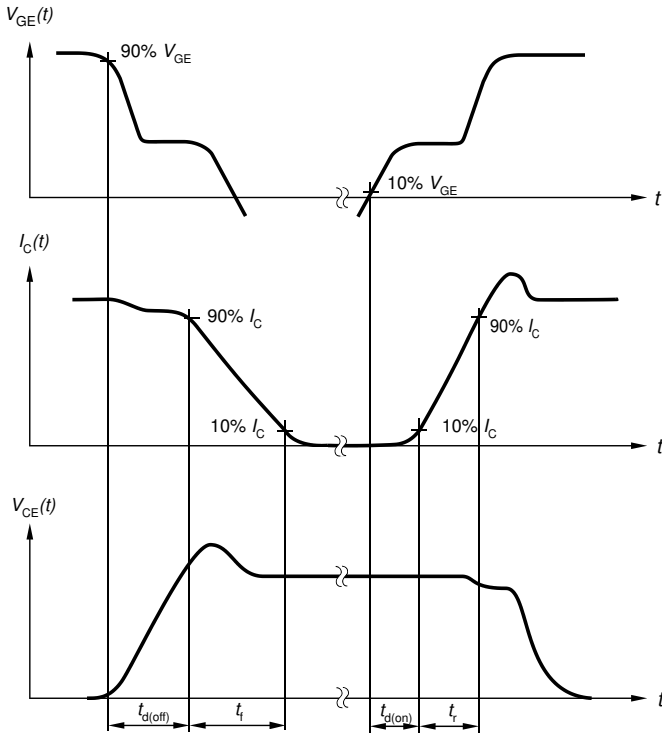


Figure A. Definition of switching times

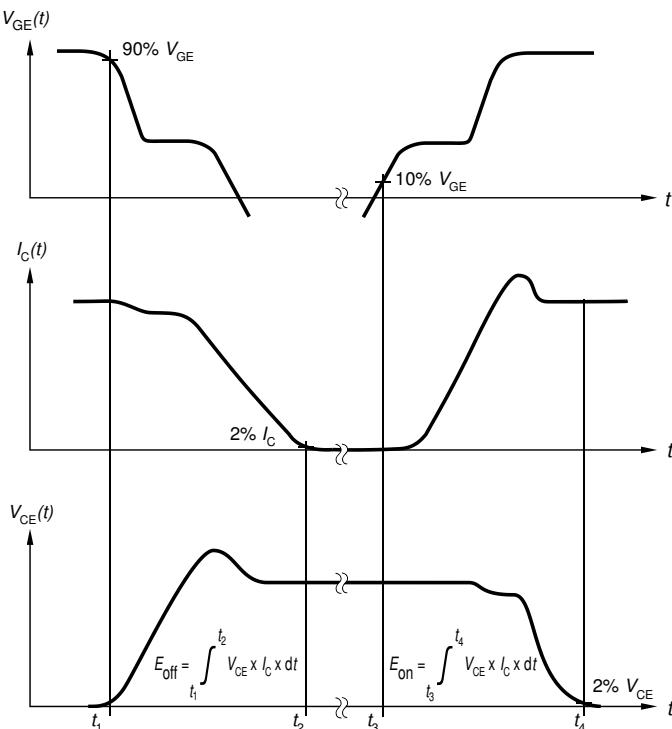


Figure B. Definition of switching losses

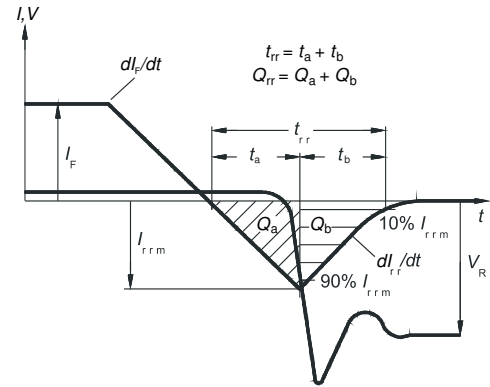


Figure C. Definition of diode switching characteristics

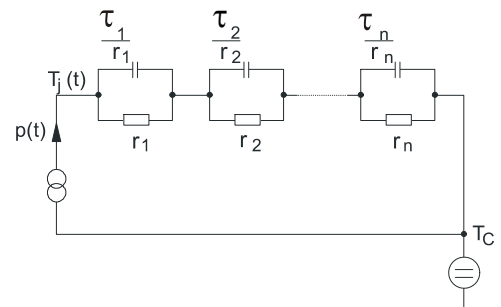


Figure D. Thermal equivalent circuit

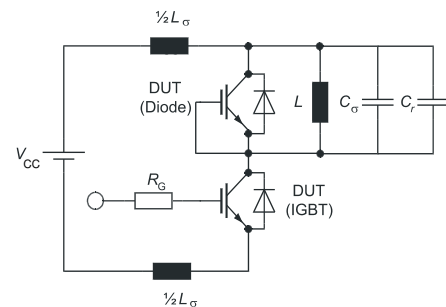


Figure E. Dynamic test circuit  
Parasitic inductance  $L_\sigma$ ,  
parasitic capacitor  $C_\sigma$ ,  
relief capacitor  $C_r$ ,  
(only for ZVT switching)

**Revision History**

IGW50N60TP

**Revision: 2016-02-05, Rev. 2.1**

Previous Revision

| Revision | Date | Subjects (major changes since last revision) |
|----------|------|--|
| 2.1      | -    | Release final datasheet                      |

**Published by**  
**Infineon Technologies AG**  
**81726 München, Germany**  
**© Infineon Technologies AG 2016.**  
**All Rights Reserved.**

**Important Notice**

The information given in this document shall in no event be regarded as a guarantee of conditions or characteristics ("Beschaffenheitsgarantie"). With respect to any examples, hints or any typical values stated herein and/or any information regarding the application of the product, Infineon Technologies hereby disclaims any and all warranties and liabilities of any kind, including without limitation warranties of non-infringement of intellectual property rights of any third party.

In addition, any information given in this document is subject to customer's compliance with its obligations stated in this document and any applicable legal requirements, norms and standards concerning customer's products and any use of the product of Infineon Technologies in customer's applications.

The data contained in this document is exclusively intended for technically trained staff. It is the responsibility of customer's technical departments to evaluate the suitability of the product for the intended application and the completeness of the product information given in this document with respect to such application.

For further information on the product, technology, delivery terms and conditions and prices please contact your nearest Infineon Technologies office ([www.infineon.com](http://www.infineon.com)).

Please note that this product is not qualified according to the AEC Q100 or AEC Q101 documents of the Automotive Electronics Council.

**Warnings**

Due to technical requirements products may contain dangerous substances. For information on the types in question please contact your nearest Infineon Technologies office.

Except as otherwise explicitly approved by Infineon Technologies in a written document signed by authorized representatives of Infineon Technologies, Infineon Technologies' products may not be used in any applications where a failure of the product or any consequences of the use thereof can reasonably be expected to result in personal injury.

单击下面可查看定价，库存，交付和生命周期等信息

[>>Infineon\(英飞凌\)](#)