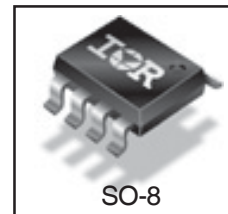
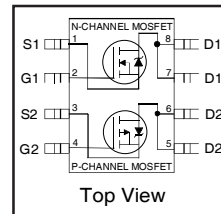


	N-CH	P-CH	
$V_{DS}$	30	-30	V
$R_{DS(on) \max}$	27	64	m $\Omega$
$Q_g$ (typical)	6.8	8.1	nC
$I_D$ (@ $T_A = 25^\circ\text{C}$ )	6.8	-4.6	A

HEXFET<sup>®</sup> Power MOSFET



**Applications**

- High and Low Side Switches for Inverter
- High and Low Side Switches for Generic Half-Bridge

**Features**

High and low-side MOSFETs in a single package
High-side P-Channel MOSFET
Industry-standard pinout
Compatible with existing surface mount techniques
RoHS compliant containing no Lead, no Bromide and no Halogen
MSL1, Consumer qualification

results in  
 $\Rightarrow$

**Benefits**

Increased power density
Easier drive circuitry
Multi-vendor compatibility
Easier manufacturing
Environmentally friendlier
Increased reliability

Base Part Number	Package Type	Standard Pack		Orderable part number
		Form	Quantity	
IRF9389PbF	SO-8	Tube/Bulk	95	IRF9389PbF
		Tape and Reel	4000	IRF9389TRPbF

**Absolute Maximum Ratings**

	Parameter	Max.		Units
		N-Channel	P-Channel	
$V_{GS}$	Gate-to-Source Voltage	$\pm 20$	$\pm 20$	V
$I_D @ T_A = 25^\circ\text{C}$	Continuous Drain Current, $V_{GS} @ 10\text{V}$	6.8	-4.6	A
$I_D @ T_A = 70^\circ\text{C}$	Continuous Drain Current, $V_{GS} @ 10\text{V}$	5.4	-3.7	
$I_{DM}$	Pulsed Drain Current <sup>①</sup>	34	-23	
$P_D @ T_A = 25^\circ\text{C}$	Power Dissipation	2.0		W
$P_D @ T_A = 70^\circ\text{C}$	Power Dissipation	1.3		
	Linear Derating Factor	0.016		W/ $^\circ\text{C}$
$T_J$ $T_{STG}$	Operating Junction and Storage Temperature Range	-55 to + 150		$^\circ\text{C}$

**Thermal Resistance**

	Parameter	Typ.	Max	Units
$R_{\theta JL}$	Junction-to-Drain Lead <sup>④</sup>	—	20	$^\circ\text{C}/\text{W}$
$R_{\theta JA}$	Junction-to-Ambient <sup>③</sup>	—	62.5	

**Static @ T<sub>J</sub> = 25°C (unless otherwise specified)**

	Parameter		Min.	Typ.	Max.	Units	Conditions
BV <sub>DSS</sub>	Drain-to-Source Breakdown Voltage	N-Ch	30	—	—	V	V <sub>GS</sub> = 0V, I <sub>D</sub> = 250μA
		P-Ch	-30	—	—		V <sub>GS</sub> = 0V, I <sub>D</sub> = -250μA
ΔBV <sub>DSS</sub> /ΔT <sub>J</sub>	Breakdown Voltage Temp. Coefficient	N-Ch	—	0.03	—	V/°C	Reference to 25°C, I <sub>D</sub> = 1mA
		P-Ch	—	0.02	—		Reference to 25°C, I <sub>D</sub> = -1mA
R <sub>DS(on)</sub>	Static Drain-to-Source On-Resistance	N-Ch	—	22	27	mΩ	V <sub>GS</sub> = 10V, I <sub>D</sub> = 6.8A ②
			—	33	40		V <sub>GS</sub> = 4.5V, I <sub>D</sub> = 5.4A ②
		P-Ch	—	51	64	mΩ	V <sub>GS</sub> = -10V, I <sub>D</sub> = -4.6A ②
			—	82	103		V <sub>GS</sub> = -4.5V, I <sub>D</sub> = -3.7A ②
V <sub>GS(th)</sub>	Gate Threshold Voltage	N-Ch	1.3	1.8	2.3	V	V <sub>DS</sub> = V <sub>GS</sub> , I <sub>D</sub> = 10μA
		P-Ch	-1.3	-1.8	-2.3		V <sub>DS</sub> = V <sub>GS</sub> , I <sub>D</sub> = -10μA
I <sub>DSS</sub>	Drain-to-Source Leakage Current	N-Ch	—	—	1.0	μA	V <sub>DS</sub> = 24V, V <sub>GS</sub> = 0V
		P-Ch	—	—	-1.0		V <sub>DS</sub> = -24V, V <sub>GS</sub> = 0V
		N-Ch	—	—	150		V <sub>DS</sub> = 24V, V <sub>GS</sub> = 0V, T <sub>J</sub> = 125°C
		P-Ch	—	—	-150		V <sub>DS</sub> = -24V, V <sub>GS</sub> = 0V, T <sub>J</sub> = 125°C
I <sub>GSS</sub>	Gate-to-Source Forward Leakage	N-Ch	—	—	100	nA	V <sub>GS</sub> = 20V
		P-Ch	—	—	-100		V <sub>GS</sub> = -20V
	Gate-to-Source Reverse Leakage	N-Ch	—	—	-100		V <sub>GS</sub> = -20V
		P-Ch	—	—	100		V <sub>GS</sub> = 20V
g <sub>fs</sub>	Forward Transconductance	N-Ch	8.2	—	—	S	V <sub>DS</sub> = 15V, I <sub>D</sub> = 5.4A
		P-Ch	4.1	—	—		V <sub>DS</sub> = -15V, I <sub>D</sub> = -3.7A
Q <sub>g</sub>	Total Gate Charge	N-Ch	—	6.8	14	nC	N-Channel V <sub>GS</sub> = 10V, V <sub>DS</sub> = 15V, I <sub>D</sub> = 6.8A
		P-Ch	—	8.1	16		P-Channel V <sub>GS</sub> = -10V, V <sub>DS</sub> = -15V, I <sub>D</sub> = -4.6A
Q <sub>gs</sub>	Gate-to-Source Charge	N-Ch	—	1.4	—		
		P-Ch	—	1.3	—		
Q <sub>gd</sub>	Gate-to-Drain ("Miller") Charge	N-Ch	—	0.98	—		
		P-Ch	—	2.1	—		
R <sub>G</sub>	Gate Resistance	N-Ch	—	2.2	4.4	Ω	
		P-Ch	—	9.4	19		
t <sub>d(on)</sub>	Turn-On Delay Time	N-Ch	—	5.1	—	ns	N-Channel V <sub>DD</sub> = 15V, V <sub>GS</sub> = 4.5V ③ I <sub>D</sub> = 1.0A, R <sub>G</sub> = 6.2Ω
		P-Ch	—	8.0	—		
t <sub>r</sub>	Rise Time	N-Ch	—	4.8	—		
		P-Ch	—	14	—		
t <sub>d(off)</sub>	Turn-Off Delay Time	N-Ch	—	4.9	—		
		P-Ch	—	17	—		
t <sub>f</sub>	Fall Time	N-Ch	—	3.9	—		
		P-Ch	—	15	—		
C <sub>iss</sub>	Input Capacitance	N-Ch	—	398	—	pF	N-Channel V <sub>GS</sub> = 0V, V <sub>DS</sub> = 15V, f = 1.0MHz
		P-Ch	—	383	—		
C <sub>oss</sub>	Output Capacitance	N-Ch	—	82	—		
		P-Ch	—	104	—		
C <sub>rss</sub>	Reverse Transfer Capacitance	N-Ch	—	36	—		
		P-Ch	—	64	—		

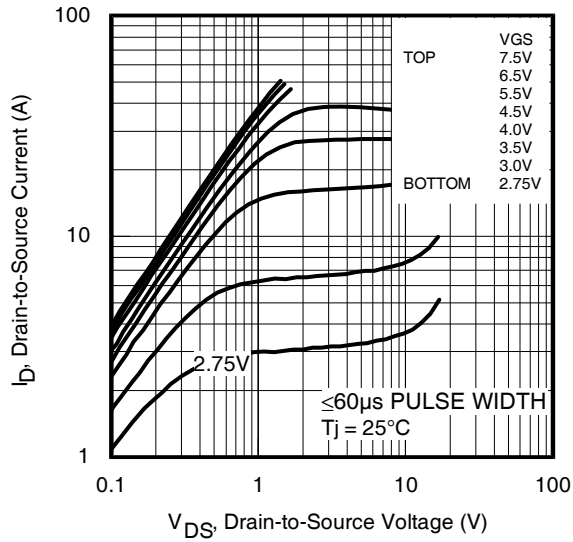
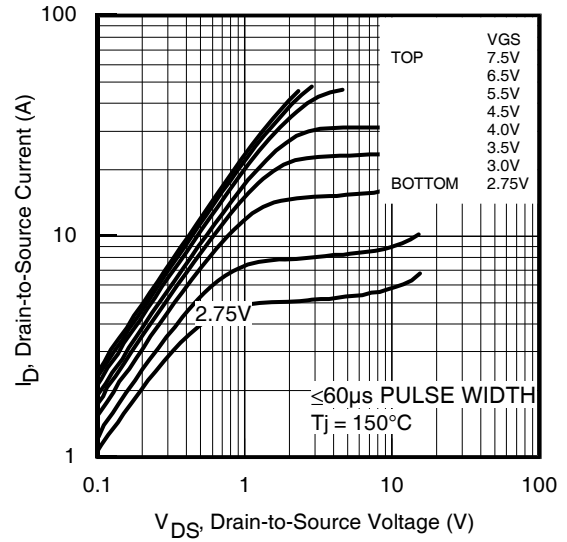
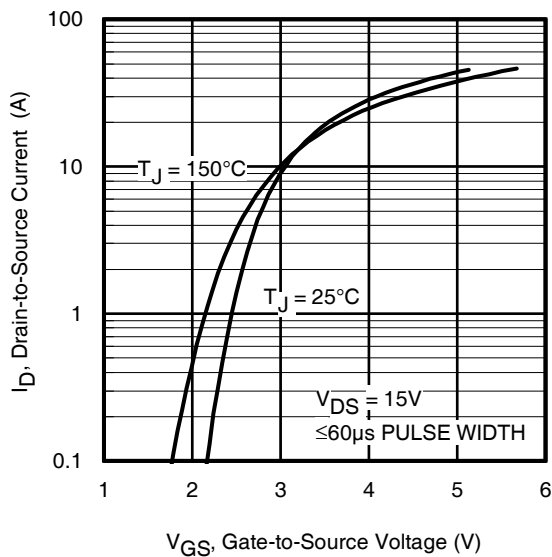
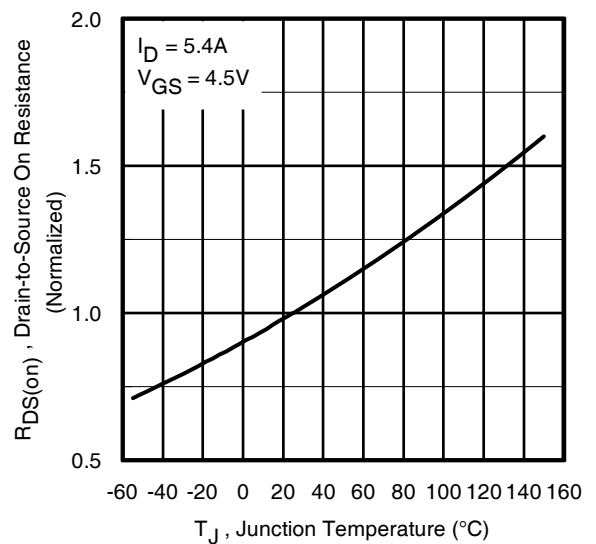
**Diode Characteristics**

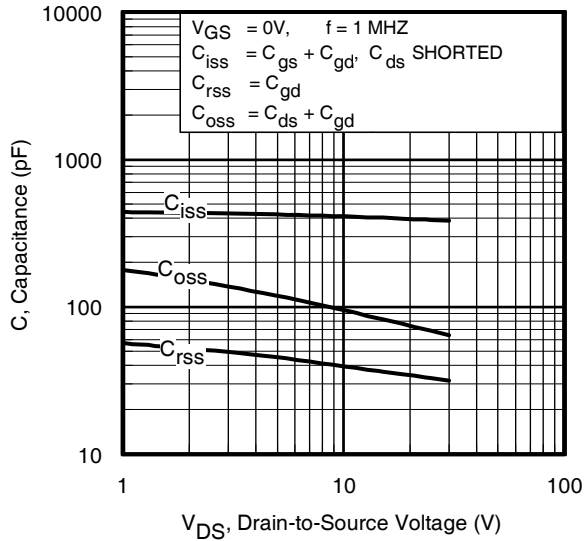
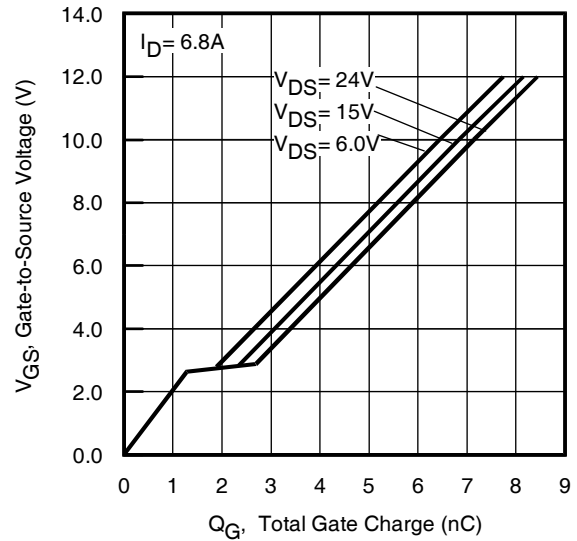
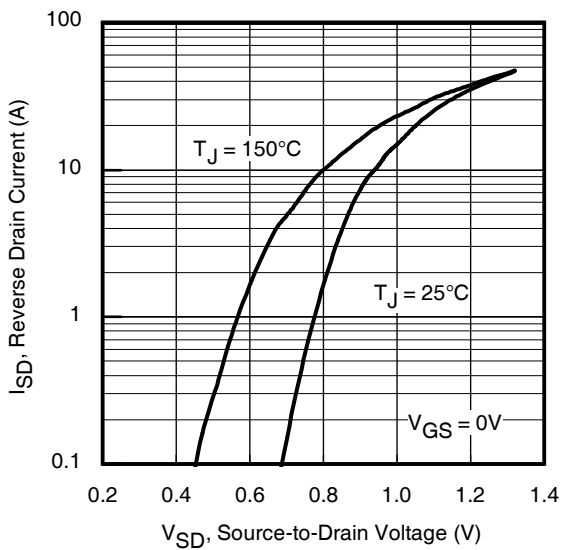
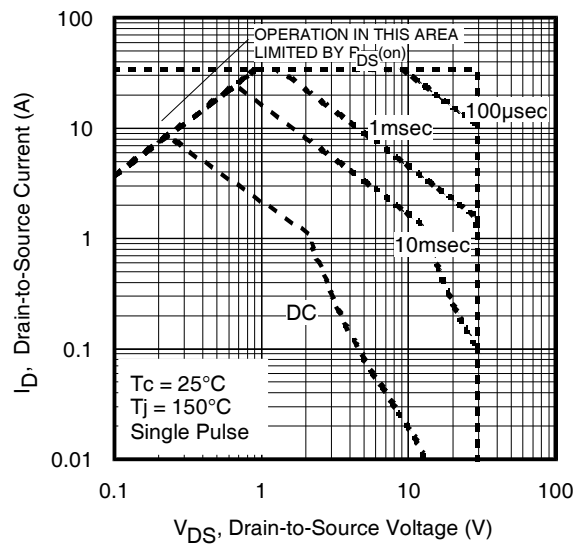
	Parameter		Min.	Typ.	Max.	Units	Conditions
I <sub>S</sub>	Continuous Source Current (Body Diode)	N-Ch	—	—	2.0	A	
		P-Ch	—	—	-2.0		
I <sub>SM</sub>	Pulsed Source Current (Body Diode)	N-Ch	—	—	34		
		P-Ch	—	—	-23		
V <sub>SD</sub>	Diode Forward Voltage	N-Ch	—	—	1.2	V	T <sub>J</sub> = 25°C, I <sub>S</sub> = 2.0A, V <sub>GS</sub> = 0V ③
		P-Ch	—	—	-1.2		T <sub>J</sub> = 25°C, I <sub>S</sub> = -2.0A, V <sub>GS</sub> = 0V ③
t <sub>rr</sub>	Reverse Recovery Time	N-Ch	—	8.4	13	ns	N-Channel: T <sub>J</sub> = 25°C, I <sub>F</sub> = 2.0A, V <sub>DD</sub> = 15V, di/dt = 102/μs ④
		P-Ch	—	11	17		
Q <sub>rr</sub>	Reverse Recovery Charge	N-Ch	—	2.3	3.5	nC	P-Channel: T <sub>J</sub> = 25°C, I <sub>F</sub> = -2.0A, V <sub>DD</sub> = -15V, di/dt = 102/μs ④
		P-Ch	—	4.8	7.2		

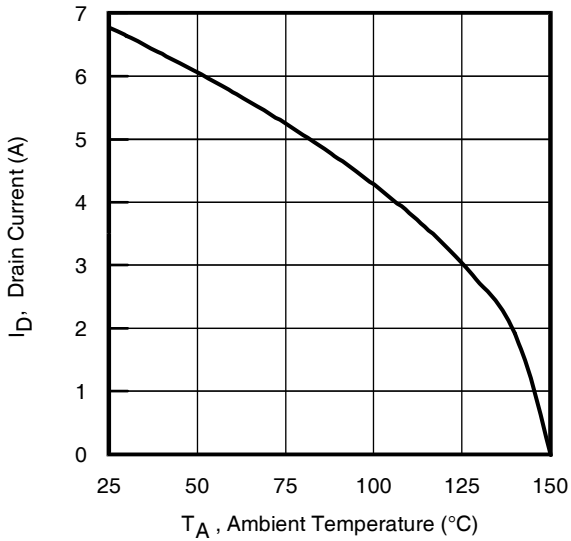
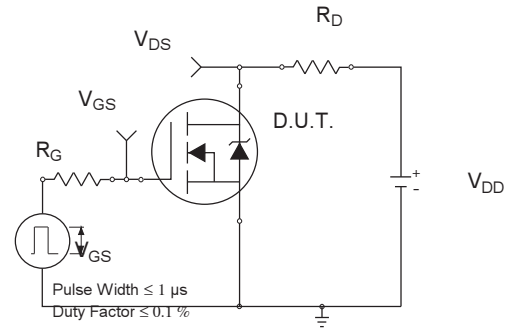
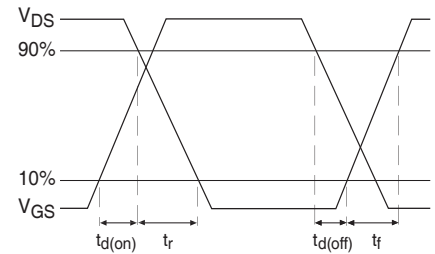
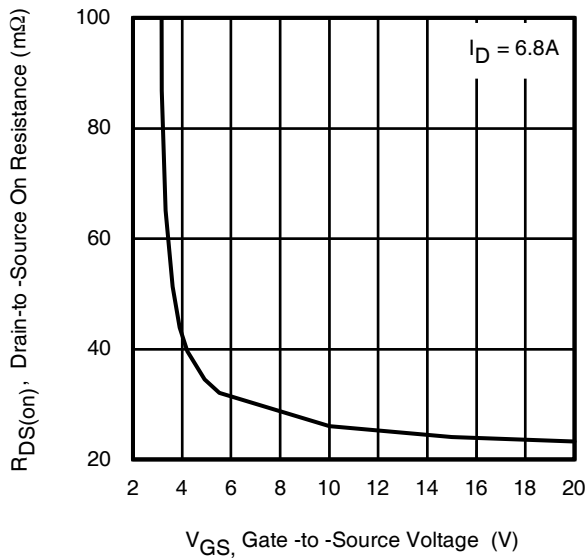
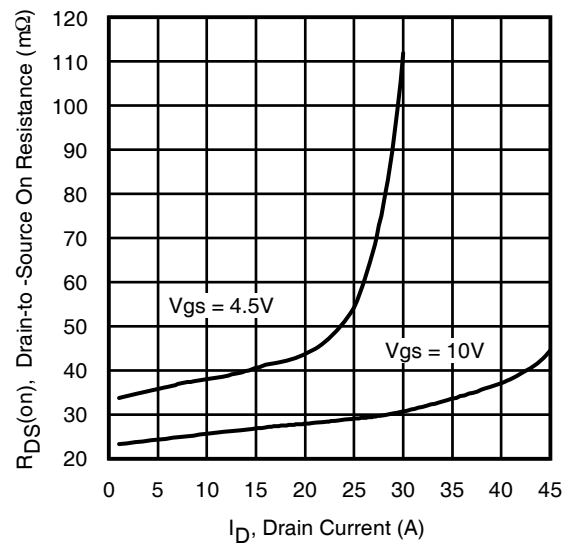
**Notes:**

- ① Repetitive rating; pulse width limited by max. junction temperature. (See fig. 16)  
 ② Pulse width ≤ 400μs; duty cycle ≤ 2%.

- ③ Surface mounted on 1 in square Cu board  
 ④ R<sub>θ</sub> is measured at T<sub>J</sub> approximately 90°C

**N-Channel**

**Fig 1.** Typical Output Characteristics

**Fig 2.** Typical Output Characteristics

**Fig 3.** Typical Transfer Characteristics

**Fig 4.** Normalized On-Resistance vs. Temperature

**N-Channel**

**Fig 5.** Typical Capacitance vs. Drain-to-Source Voltage

**Fig 6.** Typical Gate Charge vs. Gate-to-Source Voltage

**Fig 7.** Typical Source-Drain Diode Forward Voltage

**Fig 8.** Maximum Safe Operating Area

**N-Channel**

**Fig 9.** Maximum Drain Current vs. Ambient Temperature

**Fig 10a.** Switching Time Test Circuit

**Fig 10b.** Switching Time Waveforms

**Fig 11.** Typical On-Resistance vs. Gate Voltage

**Fig 12.** Typical On-Resistance vs. Drain Current

N-Channel

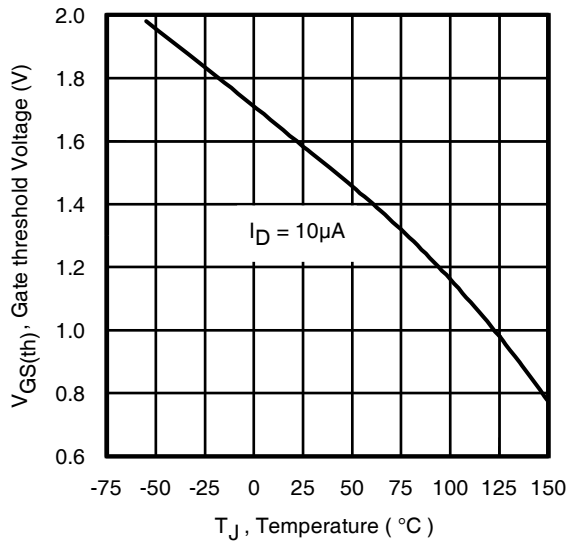


Fig 13. Threshold Voltage vs. Temperature

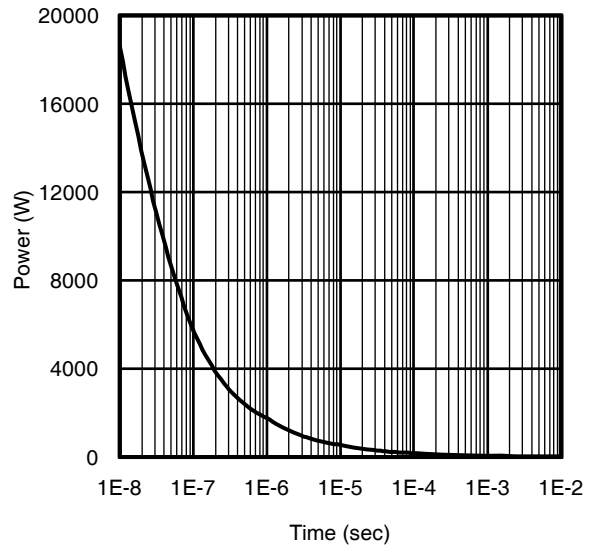


Fig 14. Typical Power vs. Time

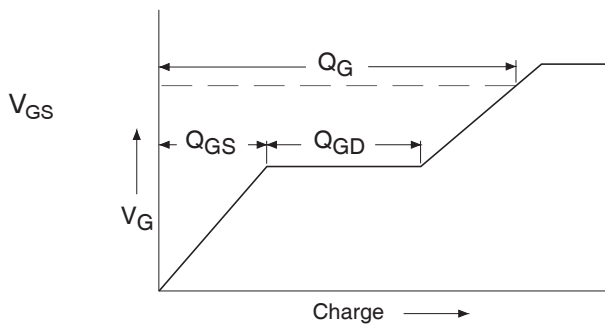


Fig 15a. Basic Gate Charge Waveform

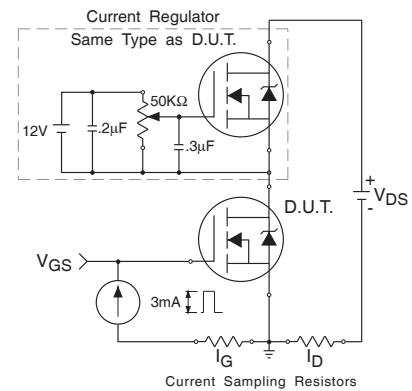


Fig 15b. Gate Charge Test Circuit

N and P-Channel

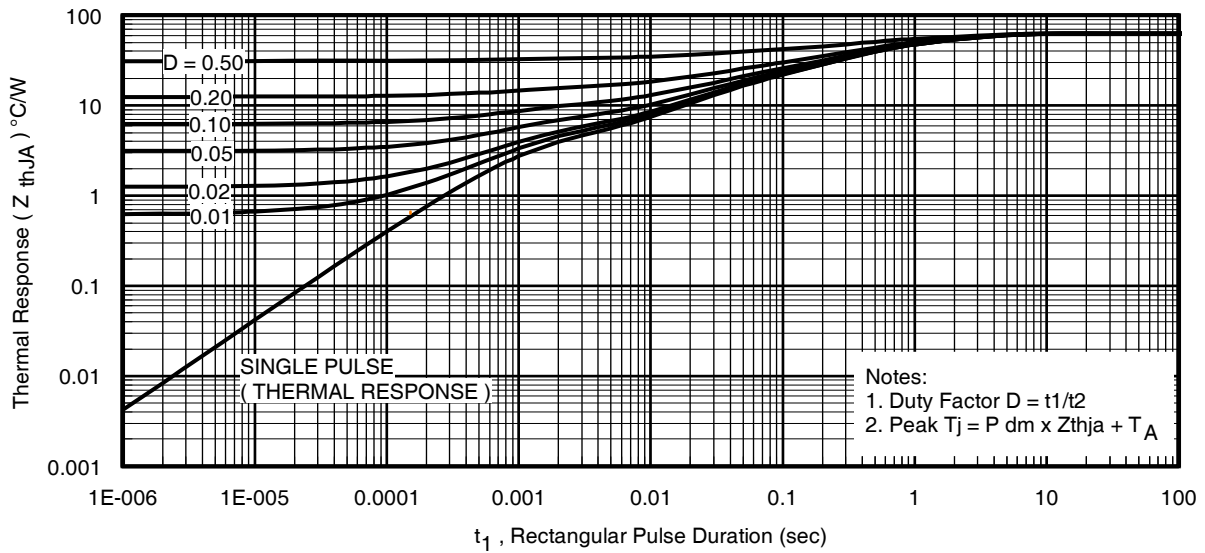


Fig 16. Typical Effective Transient Thermal Impedance, Junction-to-Ambient

P-Channel

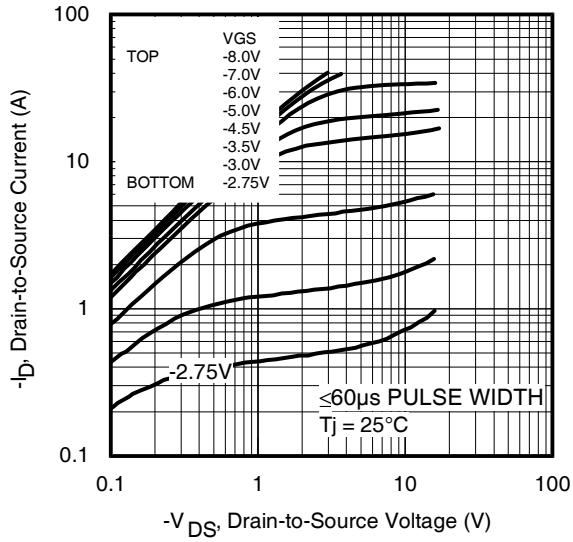


Fig 17. Typical Output Characteristics

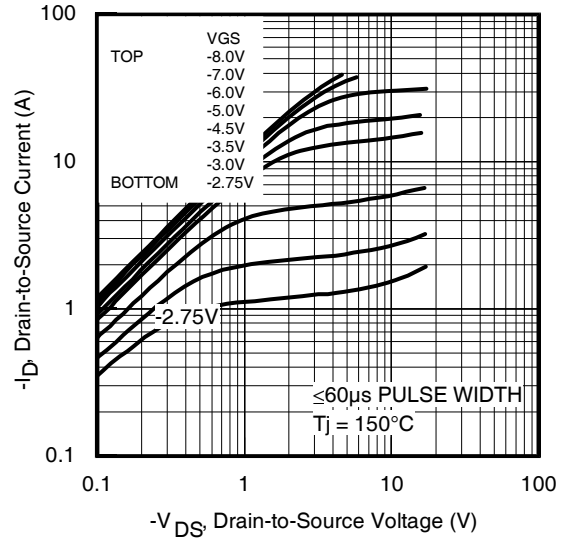


Fig 18. Typical Output Characteristics

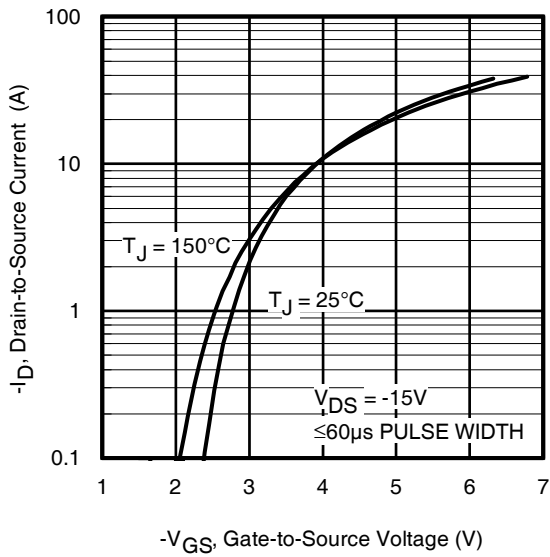


Fig 19. Typical Transfer Characteristics

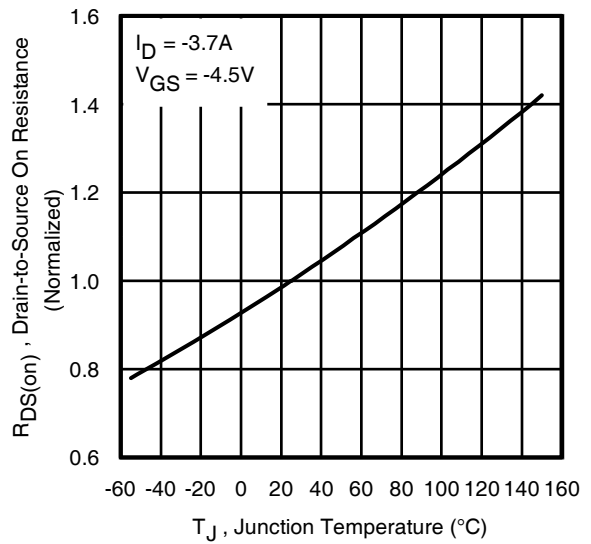
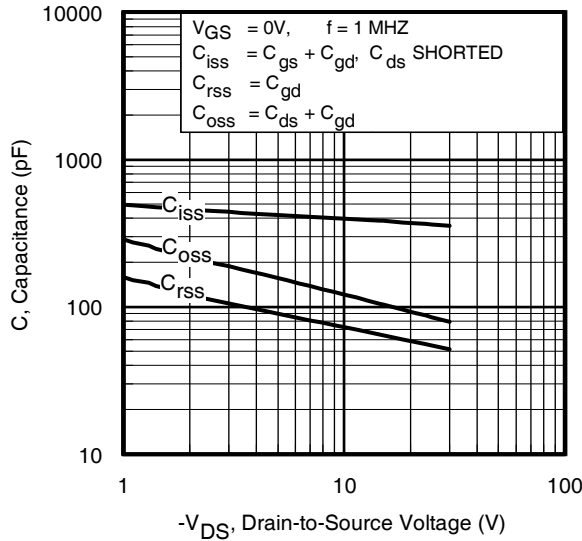
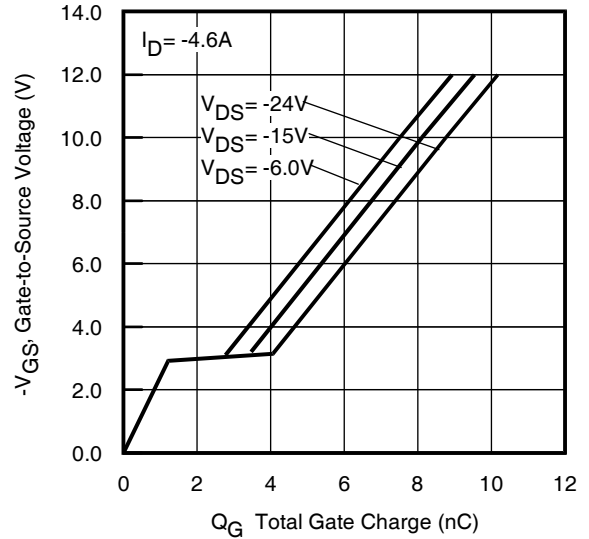
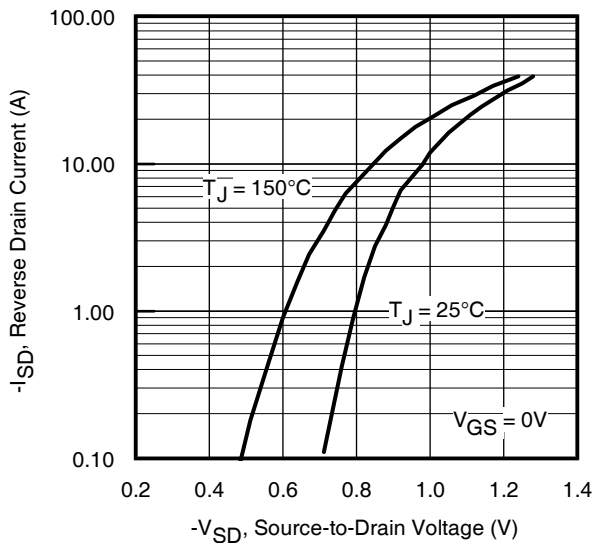
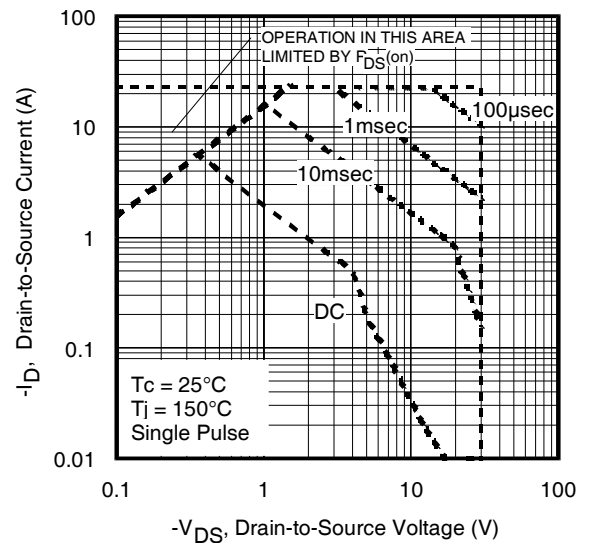
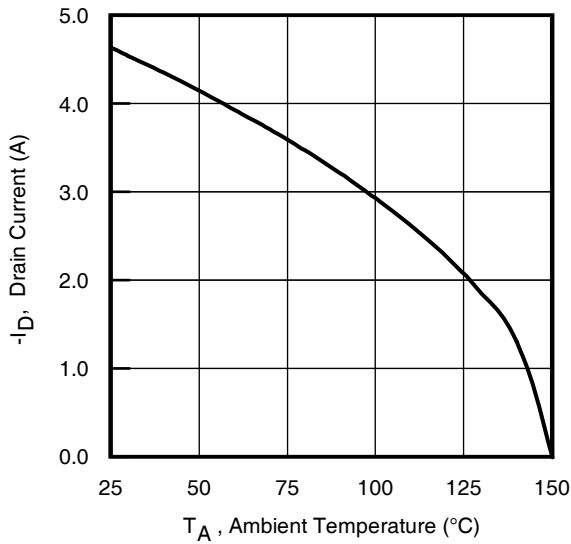
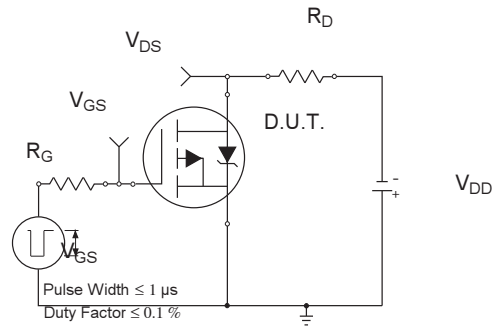
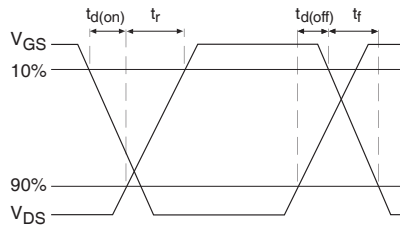
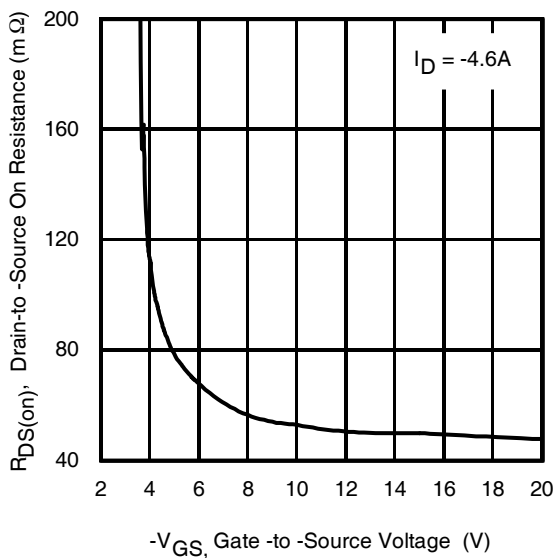
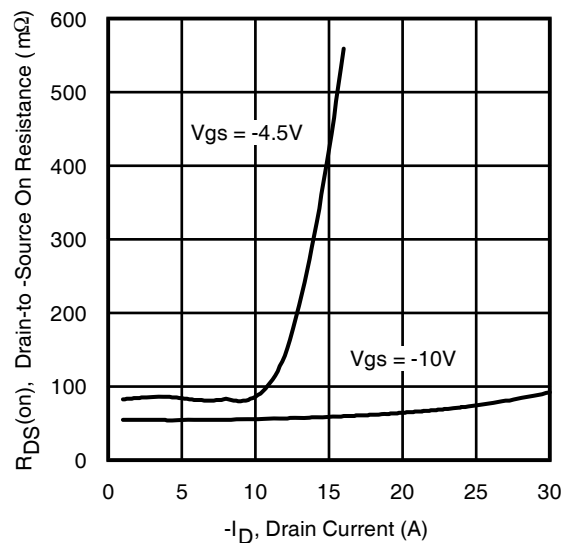


Fig 20. Normalized On-Resistance vs. Temperature



**P-Channel**

**Fig 21.** Typical Capacitance vs. Drain-to-Source Voltage

**Fig 22.** Typical Gate Charge vs. Gate-to-Source Voltage

**Fig 23.** Typical Source-Drain Diode Forward Voltage

**Fig 24.** Maximum Safe Operating Area

**P-Channel**

**Fig 25.** Maximum Drain Current vs. Ambient Temperature

**Fig 26a.** Switching Time Test Circuit

**Fig 26b.** Switching Time Waveforms

**Fig 27.** Typical On-Resistance vs. Gate Voltage

**Fig 28.** Typical On-Resistance vs. Drain Current

P-Channel

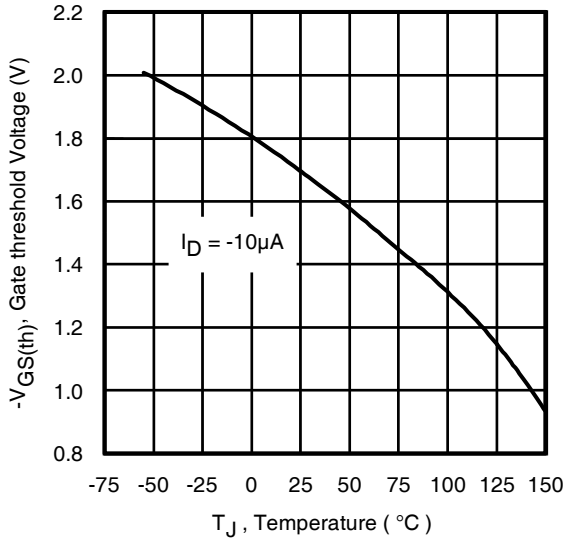


Fig 29. Threshold Voltage vs. Temperature

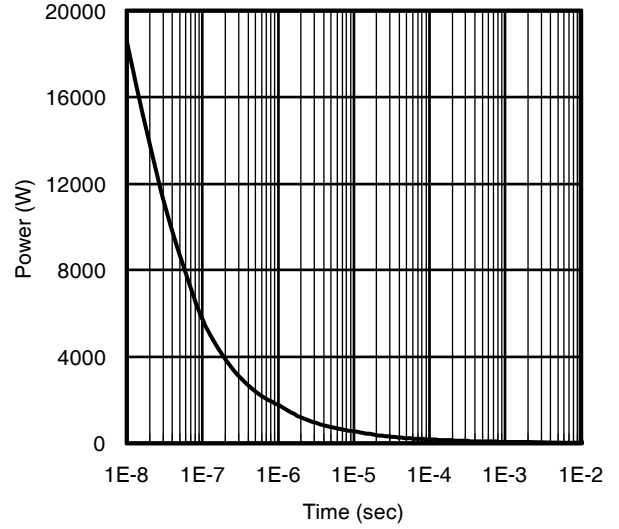


Fig 30. Typical Power vs. Time

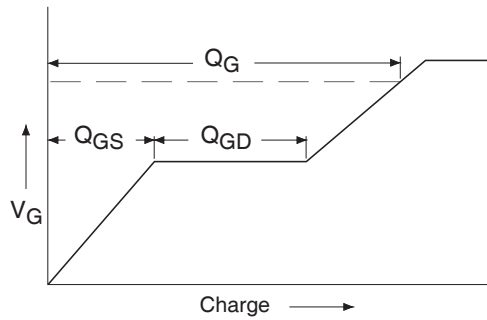


Fig 31a. Basic Gate Charge Waveform

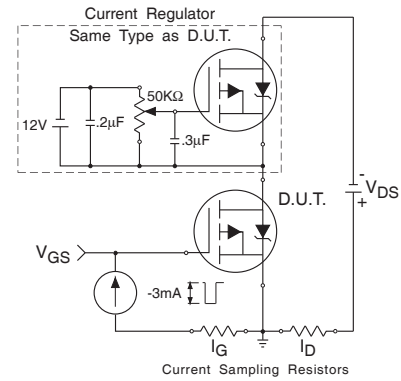
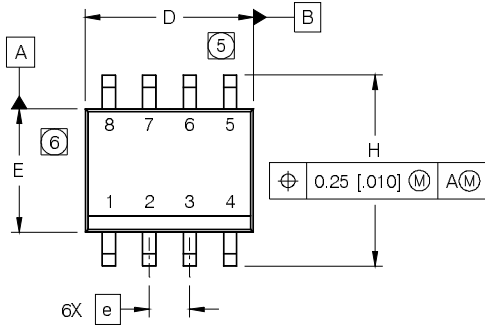
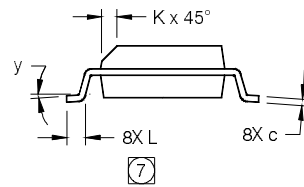
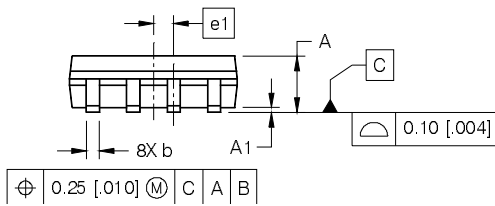


Fig 31b. Gate Charge Test Circuit

### SO-8 Package Details

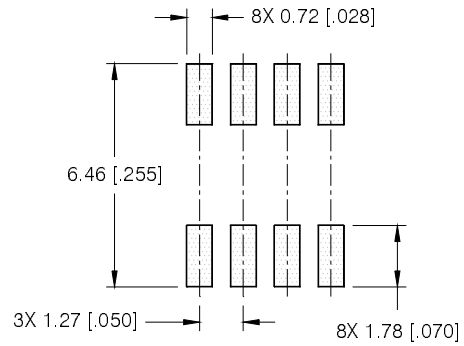


DIM	INCHES		MILLIMETERS	
	MIN	MAX	MIN	MAX
A	.0532	.0688	1.35	1.75
A1	.0040	.0098	0.10	0.25
b	.013	.020	0.33	0.51
c	.0075	.0098	0.19	0.25
D	.189	.1968	4.80	5.00
E	.1497	.1574	3.80	4.00
e	.050 BASIC		1.27 BASIC	
e1	.025 BASIC		0.635 BASIC	
H	.2284	.2440	5.80	6.20
K	.0099	.0196	0.25	0.50
L	.016	.050	0.40	1.27
y	0°	8°	0°	8°

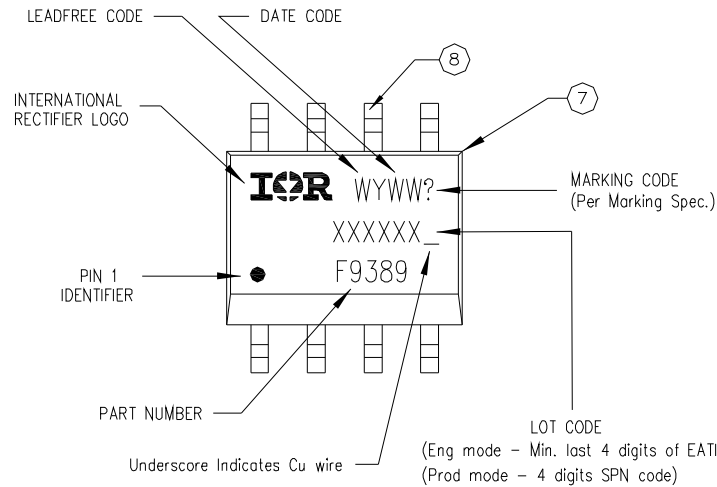


- NOTES:
- DIMENSIONING & TOLERANCING PER ASME Y14.5M-1994.
  - CONTROLLING DIMENSION: MILLIMETER
  - DIMENSIONS ARE SHOWN IN MILLIMETERS [INCHES].
  - OUTLINE CONFORMS TO JEDEC OUTLINE MS-012AA.
  - DIMENSION DOES NOT INCLUDE MOLD PROTRUSIONS. MOLD PROTRUSIONS NOT TO EXCEED 0.15 [0.006].
  - DIMENSION DOES NOT INCLUDE MOLD PROTRUSIONS. MOLD PROTRUSIONS NOT TO EXCEED 0.25 [0.010].
  - DIMENSION IS THE LENGTH OF LEAD FOR SOLDERING TO A SUBSTRATE.

#### FOOTPRINT

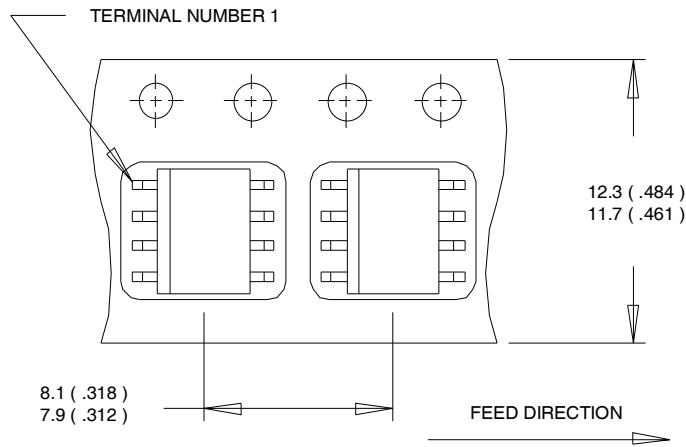


### SO-8 Part Marking

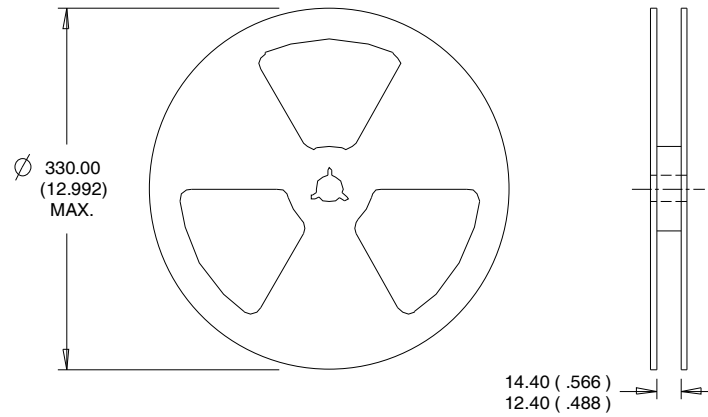


Note: For the most current drawing please refer to IR website at <http://www.irf.com/package/>

Tape and Reel



- NOTES:
1. CONTROLLING DIMENSION : MILLIMETER.
  2. ALL DIMENSIONS ARE SHOWN IN MILLIMETERS(INCHES).
  3. OUTLINE CONFORMS TO EIA-481 & EIA-541.



- NOTES :
1. CONTROLLING DIMENSION : MILLIMETER.
  2. OUTLINE CONFORMS TO EIA-481 & EIA-541.

**Qualification information<sup>†</sup>**

Qualification level	Consumer (per JEDEC JES D47F <sup>††</sup> guidelines)	
Moisture Sensitivity Level	SO-8	MSL1 (per JEDEC J-S TD-020D <sup>††</sup> )
RoHS compliant	Yes	

† Qualification standards can be found at International Rectifier’s web site:

<http://www.irf.com/product-info/reliability/>

†† Applicable version of JEDEC standard at the time of product release.

## **IMPORTANT NOTICE**

The information given in this document shall in no event be regarded as a guarantee of conditions or characteristics ("Beschaffheitsgarantie").

With respect to any examples, hints or any typical values stated herein and/or any information regarding the application of the product, Infineon Technologies hereby disclaims any and all warranties and liabilities of any kind, including without limitation warranties of non-infringement of intellectual property rights of any third party.

In addition, any information given in this document is subject to customer's compliance with its obligations stated in this document and any applicable legal requirements, norms and standards concerning customer's products and any use of the product of Infineon Technologies in customer's applications.

The data contained in this document is exclusively intended for technically trained staff. It is the responsibility of customer's technical departments to evaluate the suitability of the product for the intended application and the completeness of the product information given in this document with respect to such application.

For further information on the product, technology, delivery terms and conditions and prices please contact your nearest Infineon Technologies office ([www.infineon.com](http://www.infineon.com)).

## **WARNINGS**

Due to technical requirements products may contain dangerous substances. For information on the types in question please contact your nearest Infineon Technologies office.

Except as otherwise explicitly approved by Infineon Technologies in a written document signed by authorized representatives of Infineon Technologies, Infineon Technologies' products may not be used in any applications where a failure of the product or any consequences of the use thereof can reasonably be expected to result in personal injury.

单击下面可查看定价，库存，交付和生命周期等信息

[>>Infineon\(英飞凌\)](#)