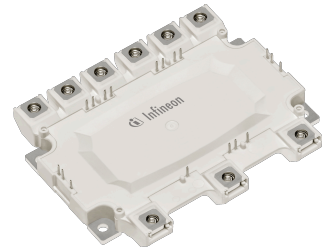


## HybridPACK™ DC6 module with Trench/Fieldstop IGBT3 and emitter controlled 3 diode and NTC

### Features

- Electrical features
  - $V_{CES} = 700\text{ V}$
  - $I_{C\text{nom}} = 400\text{ A} / I_{CRM} = 800\text{ A}$
  - Increased blocking voltage capability to 705 V
  - $V_{CE,sat}$  with positive temperature coefficient
  - Low  $V_{CE,sat}$
  - Low switching losses
  - Low inductive design
  - $T_{vj,op} = 150^{\circ}\text{C}$
  - Short-time extended operation temperature  $T_{vj,op} = 175^{\circ}\text{C}$
- Mechanical features
  - 2.5 kV AC 1 minute insulation
  - $\text{Al}_2\text{O}_3$  substrate with low thermal resistance
  - Integrated NTC temperature sensor
  - High mechanical robustness
  - RoHS compliant



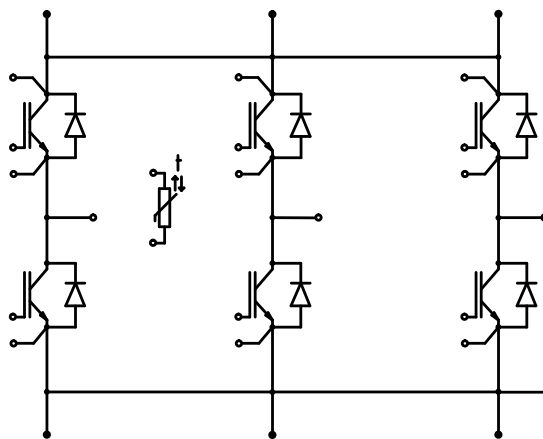
### Potential applications

- (Hybrid) electrical vehicles (H)EV
- Motor drives
- Optimized for automotive applications with DC link voltages up to 450 V

### Description

Infineon's HybridPACK™ 1 DC6 is a variant of the HybridPACK™ 1 power module family with increased continuous current capability and a reduced stray inductance.

Like all HybridPACK™ 1 products the HybridPACK™ 1 DC6 is an automotive qualified powermodule designed for electric vehicle applications. Designed for a 150°C junction operation temperature, with a 30 hour limited 175°C capacity the module accommodates a 3-phase Six-Pack configuration of Trench-Field-Stop IGBT3 and matching emitter controlled diodes. The HybridPACK™ 1 power module family is built on Infineon's long time experience in the development of IGBT power modules, intense research efforts of new material combinations and assembly technologies. HybridPACK™ 1 DC6 is suitable for air or liquid cooling. The copper base plate combined with high-performance ceramic substrate and Infineon's enhanced wire-bonding process provides unparalleled thermal and power cycling capability and highest reliability for mild hybrid inverter or generator applications. For a compact design the driver stage PCB can easily be soldered on top of the module. All power connections are realized with screw terminals.



## Table of contents

	<b>Description</b> .....	1
	<b>Features</b> .....	1
	<b>Potential applications</b> .....	1
	<b>Table of contents</b> .....	2
<b>1</b>	<b>Package</b> .....	3
<b>2</b>	<b>IGBT, Inverter</b> .....	3
<b>3</b>	<b>Diode, Inverter</b> .....	5
<b>4</b>	<b>NTC-Thermistor</b> .....	6
<b>5</b>	<b>Characteristics diagrams</b> .....	8
<b>6</b>	<b>Circuit diagram</b> .....	11
<b>7</b>	<b>Package outlines</b> .....	12
<b>8</b>	<b>Module label code</b> .....	13
	<b>Revision history</b> .....	14
	<b>Disclaimer</b> .....	15

## 1 Package

**Table 1 Insulation coordination**

Parameter	Symbol	Note or test condition	Values	Unit
Isolation test voltage	$V_{ISOL}$	RMS, $f = 50 \text{ Hz}$ , $t = 1 \text{ min}$	2.5	kV
Material of module baseplate			Cu	
Internal isolation		basic insulation (class 1, IEC 61140)	$\text{Al}_2\text{O}_3$	
Creepage distance	$d_{creep}$	terminal to heatsink	12.0	mm
Creepage distance	$d_{creep}$	terminal to terminal	6.1	mm
Clearance	$d_{clear}$	terminal to heatsink	12.0	mm
Clearance	$d_{clear}$	terminal to terminal	6.1	mm
Comparative tracking index	$CTI$		>200	

**Table 2 Maximum rated values**

Parameter	Symbol	Note or test condition	Values	Unit
Maximum RMS module terminal current <sup>1)</sup>	$I_{t,rms}$	$T_{terminal} = 150 \text{ °C}$ , $T_c = 25 \text{ °C}$	320	A

1) DC-collector current limited by internal busbar.

**Table 3 Characteristic values**

Parameter	Symbol	Note or test condition	Values			Unit
			Min.	Typ.	Max.	
Stray inductance module	$L_{s,CE}$			16.0		nH
Module lead resistance, terminals - chip	$R_{CC'+EE'}$	$T = 25 \text{ °C}$ , per switch		1.00		mΩ
Storage temperature	$T_{stg}$		-40		125	°C
Mounting torque for module mounting	$M$	Screw M5 baseplate to heatsink	3.0		6.0	Nm
Terminal connection torque	$M$	Screw M6	3.0		6.0	Nm
Weight	$G$			510		g

Note: Mounting according to valid application note AN 2010-08 Mounting Instruction HybridPACK™ 1.

## 2 IGBT, Inverter

**Table 4 Maximum rated values**

Parameter	Symbol	Note or test condition	Values	Unit
Collector-emitter voltage	$V_{CES}$	$T_{vj} = 25 \text{ °C}$	705	V

(table continues...)

**Table 4 (continued) Maximum rated values**

Parameter	Symbol	Note or test condition	Values	Unit
Continuous DC collector current	$I_{C,nom}$	$T_c = 65\text{ °C}, T_{vj,max} = 175\text{ °C}$	400	A
Continuous DC collector current	$I_C$	$T_c = 25\text{ °C}, T_{vj,max} = 175\text{ °C}$	500	A
Repetitive peak collector current	$I_{CRM}$	$t_p = 1\text{ ms}$	800	A
Total power dissipation	$P_{tot}$	$T_c = 25\text{ °C}, T_{vj,max} = 175\text{ °C}$	1250	W
Gate-emitter peak voltage	$V_{GES}$		±20	V

**Table 5 Characteristic values**

Parameter	Symbol	Note or test condition	Values			Unit	
			Min.	Typ.	Max.		
Collector-emitter saturation voltage	$V_{CE,sat}$	$I_C = 400\text{ A}, V_{GE} = 15\text{ V}$	$T_{vj} = 25\text{ °C}$	1.45	1.70	V	
			$T_{vj} = 125\text{ °C}$	1.60			
			$T_{vj} = 150\text{ °C}$	1.70			
Gate threshold voltage	$V_{GE,th}$	$I_C = 6.4\text{ mA}, V_{CE} = V_{GE}$	$T_{vj} = 25\text{ °C}$	4.9	5.8	6.5	V
Gate charge	$Q_G$	$V_{GE} = \pm 15\text{ V}$		4.3			μC
Internal gate resistor	$R_{G,int}$		$T_{vj} = 25\text{ °C}$	1.0			Ω
Input capacitance	$C_{ies}$	$f = 1\text{ MHz}, V_{CE} = 25\text{ V}, V_{GE} = 0\text{ V}$	$T_{vj} = 25\text{ °C}$	26.0			nF
Reverse transfer capacitance	$C_{res}$	$f = 1\text{ MHz}, V_{CE} = 25\text{ V}, V_{GE} = 0\text{ V}$	$T_{vj} = 25\text{ °C}$	0.76			nF
Collector-emitter cut-off current	$I_{CES}$	$V_{CE} = 450\text{ V}, V_{GE} = 0\text{ V}$	$T_{vj} = 25\text{ °C}$			0.1	mA
Gate-emitter leakage current	$I_{GES}$	$V_{CE} = 0\text{ V}, V_{GE} = 20\text{ V}$	$T_{vj} = 25\text{ °C}$			400	nA
Turn-on delay time, inductive load	$t_{d,on}$	$I_C = 400\text{ A}, V_{CE} = 300\text{ V}, V_{GE} = \pm 15\text{ V}, R_{G,on} = 1.8\text{ } \Omega$	$T_{vj} = 25\text{ °C}$	0.12			μs
			$T_{vj} = 125\text{ °C}$	0.12			
			$T_{vj} = 150\text{ °C}$	0.12			
Rise time, inductive load	$t_r$	$I_C = 400\text{ A}, V_{CE} = 300\text{ V}, V_{GE} = \pm 15\text{ V}, R_{G,on} = 1.8\text{ } \Omega$	$T_{vj} = 25\text{ °C}$	0.08			μs
			$T_{vj} = 125\text{ °C}$	0.08			
			$T_{vj} = 150\text{ °C}$	0.08			
Turn-off delay time, inductive load	$t_{d,off}$	$I_C = 400\text{ A}, V_{CE} = 300\text{ V}, V_{GE} = \pm 15\text{ V}, R_{G,off} = 1.8\text{ } \Omega$	$T_{vj} = 25\text{ °C}$	0.36			μs
			$T_{vj} = 125\text{ °C}$	0.40			
			$T_{vj} = 150\text{ °C}$	0.40			

(table continues...)

**Table 5 (continued) Characteristic values**

Parameter	Symbol	Note or test condition	Values			Unit
			Min.	Typ.	Max.	
Fall time, inductive load	$t_f$	$I_C = 400\text{ A}$ , $V_{CE} = 300\text{ V}$ , $V_{GE} = \pm 15\text{ V}$ , $R_{G,off} = 1.8\ \Omega$	$T_{vj} = 25\text{ °C}$	0.02		$\mu\text{s}$
			$T_{vj} = 125\text{ °C}$	0.03		
			$T_{vj} = 150\text{ °C}$	0.03		
Turn-on energy loss per pulse	$E_{on}$	$I_C = 400\text{ A}$ , $V_{CE} = 300\text{ V}$ , $L_\sigma = 16\text{ nH}$ , $V_{GE} = \pm 15\text{ V}$ , $R_{G,on} = 1.8\ \Omega$	$T_{vj} = 25\text{ °C}$	5.1		mJ
			$T_{vj} = 125\text{ °C}$	6.8		
			$T_{vj} = 150\text{ °C}$ , $di/dt = 4500\text{ A}/\mu\text{s}$	7.3		
Turn-off energy loss per pulse	$E_{off}$	$I_C = 400\text{ A}$ , $V_{CE} = 300\text{ V}$ , $L_\sigma = 16\text{ nH}$ , $V_{GE} = \pm 15\text{ V}$ , $R_{G,off} = 1.8\ \Omega$	$T_{vj} = 25\text{ °C}$	9.1		mJ
			$T_{vj} = 125\text{ °C}$	12.0		
			$T_{vj} = 150\text{ °C}$ , $du/dt = 3400\text{ V}/\mu\text{s}$	12.5		
SC data	$I_{SC}$	$V_{CC} = 360\text{ V}$ , $V_{CEmax} =$ $V_{CES} - L_{SCE} \cdot di/dt$	$T_{vj} = 25\text{ °C}$ , $t_p \leq$ $8\ \mu\text{s}$	2800		A
			$T_{vj} = 150\text{ °C}$ , $t_p \leq$ $6\ \mu\text{s}$	2000		
Thermal resistance, junction to case	$R_{th,j-c}$	per IGBT			0.120	K/W
Thermal resistance, case to heat sink	$R_{th,c-h}$	per IGBT $\lambda_{paste} = 1\text{ W}/(\text{m}\cdot\text{K})$ / $\lambda_{grease} = 1\text{ W}/(\text{m}\cdot\text{K})$		0.080		K/W
Temperature under switching conditions	$T_{vj,op}$	$t_{op}$ continuous	-40		150	$^{\circ}\text{C}$
		$t_{op,max}$ 30h over life time, for 10s within period of 10min	150		175	

Note: DC-collector current limited by power terminals.

### 3 Diode, Inverter

**Table 6 Maximum rated values**

Parameter	Symbol	Note or test condition	Values	Unit
Repetitive peak reverse voltage	$V_{RRM}$	$T_{vj} = 25\text{ °C}$	705	V
Continuous DC forward current	$I_{F,nom}$		400	A
Repetitive peak forward current	$I_{FRM}$	$t_p = 1\text{ ms}$	800	A

(table continues...)

**Table 6 (continued) Maximum rated values**

Parameter	Symbol	Note or test condition	Values	Unit	
I <sup>2</sup> t - value	I <sup>2</sup> t	V <sub>R</sub> = 0 V, t <sub>p</sub> = 10 ms	T <sub>vj</sub> = 125 °C	8800	A <sup>2</sup> s
			T <sub>vj</sub> = 150 °C	8500	

**Table 7 Characteristic values**

Parameter	Symbol	Note or test condition	Values			Unit	
			Min.	Typ.	Max.		
Forward voltage	V <sub>F</sub>	I <sub>F</sub> = 400 A, V <sub>GE</sub> = 0 V	T <sub>vj</sub> = 25 °C		1.55	1.95	V
			T <sub>vj</sub> = 125 °C		1.50		
			T <sub>vj</sub> = 150 °C		1.45		
Peak reverse recovery current	I <sub>rm</sub>	I <sub>F</sub> = 400 A, V <sub>GE</sub> = -15 V, V <sub>R</sub> = 300 V	T <sub>vj</sub> = 25 °C		205		A
			T <sub>vj</sub> = 125 °C		295		
			T <sub>vj</sub> = 150 °C, -di <sub>F</sub> /dt = 4500 A/μs		305		
Recovered charge	Q <sub>r</sub>	I <sub>F</sub> = 400 A, V <sub>GE</sub> = -15 V, V <sub>R</sub> = 300 V	T <sub>vj</sub> = 25 °C		15.0		μC
			T <sub>vj</sub> = 125 °C		32.0		
			T <sub>vj</sub> = 150 °C, -di <sub>F</sub> /dt = 4500 A/μs		34.0		
Reverse recovery energy	E <sub>rec</sub>	I <sub>F</sub> = 400 A, V <sub>GE</sub> = -15 V, V <sub>R</sub> = 300 V	T <sub>vj</sub> = 25 °C		3.35		mJ
			T <sub>vj</sub> = 125 °C		6.90		
			T <sub>vj</sub> = 150 °C, -di <sub>F</sub> /dt = 4500 A/μs		8.10		
Thermal resistance, junction to case	R <sub>th,j-c</sub>	per diode			0.200	K/W	
Thermal resistance, case to heat sink	R <sub>th,c-h</sub>	per diode λ <sub>Paste</sub> = 1 W/(m·K) / λ <sub>grease</sub> = 1 W/(m·K)		0.085		K/W	
Temperature under switching conditions	T <sub>vj,op</sub>	t <sub>op</sub> continuous	-40		150	°C	
		t <sub>op,max</sub> 30h over life time, for 10s within period of 10min	150		175		

Note: Diode forward current limited by power terminals.

## 4 NTC-Thermistor

**Table 8 Characteristic values**

Parameter	Symbol	Note or test condition	Values			Unit
			Min.	Typ.	Max.	
Rated resistance	R <sub>25</sub>	T <sub>NTC</sub> = 25 °C		5		kΩ

(table continues...)

**Table 8** (continued) **Characteristic values**

Parameter	Symbol	Note or test condition	Values			Unit
			Min.	Typ.	Max.	
Deviation of $R_{100}$	$\Delta R/R$	$T_{NTC} = 100\text{ °C}$ , $R_{100} = 493\ \Omega$	-5		5	%
Power dissipation	$P_{25}$	$T_{NTC} = 25\text{ °C}$			20	mW
B-value	$B_{25/50}$	$R_2 = R_{25} \exp[B_{25/50}(1/T_2 - 1/(298,15\text{ K}))]$		3375		K
B-value	$B_{25/80}$	$R_2 = R_{25} \exp[B_{25/80}(1/T_2 - 1/(298,15\text{ K}))]$		3411		K
B-value	$B_{25/100}$	$R_2 = R_{25} \exp[B_{25/100}(1/T_2 - 1/(298,15\text{ K}))]$		3433		K

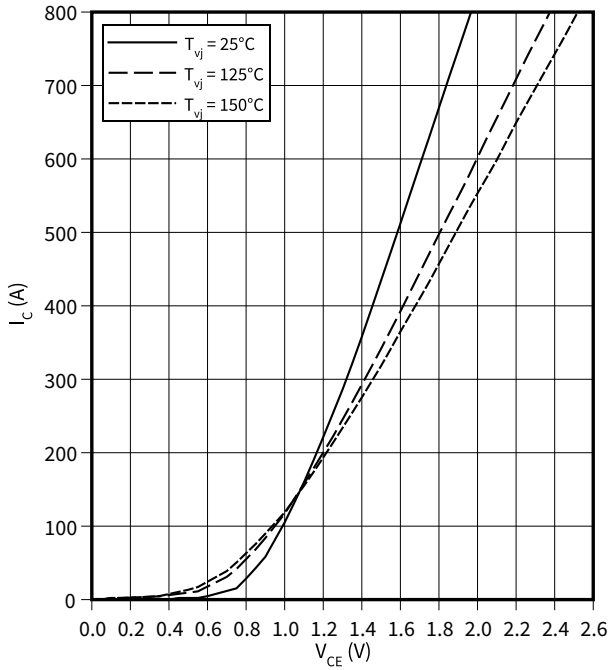
Note: Specification according to the valid application note.

## 5 Characteristics diagrams

### Output characteristic (typical), IGBT, Inverter

$$I_C = f(V_{CE})$$

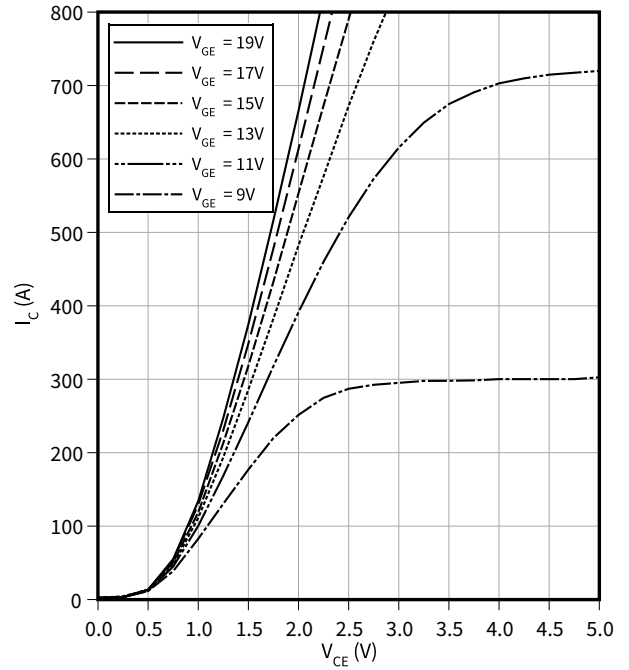
$$V_{GE} = 15 \text{ V}$$



### Output characteristic (typical), IGBT, Inverter

$$I_C = f(V_{CE})$$

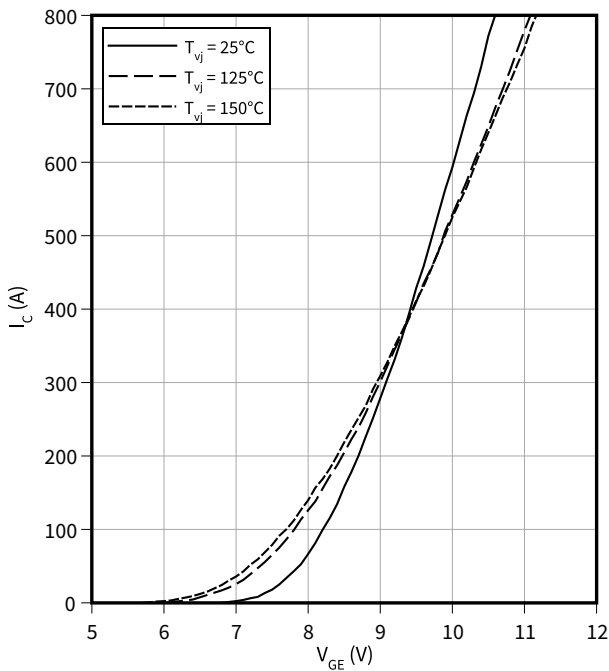
$$T_{vj} = 150 \text{ °C}$$



### Transfer characteristic (typical), IGBT, Inverter

$$I_C = f(V_{GE})$$

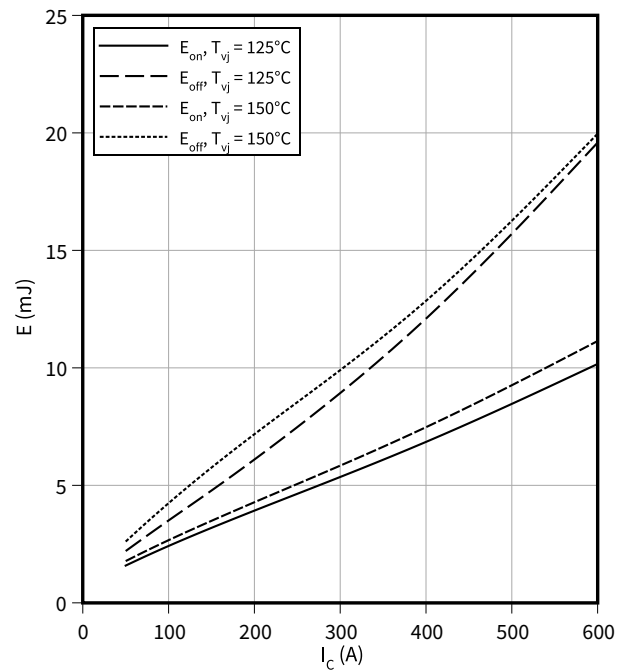
$$V_{CE} = 20 \text{ V}$$



### Switching losses (typical), IGBT, Inverter

$$E = f(I_C)$$

$$R_{G,off} = 1.8 \text{ } \Omega, R_{G,on} = 1.8 \text{ } \Omega, V_{CE} = 300 \text{ V}, V_{GE} = \pm 15 \text{ V}$$



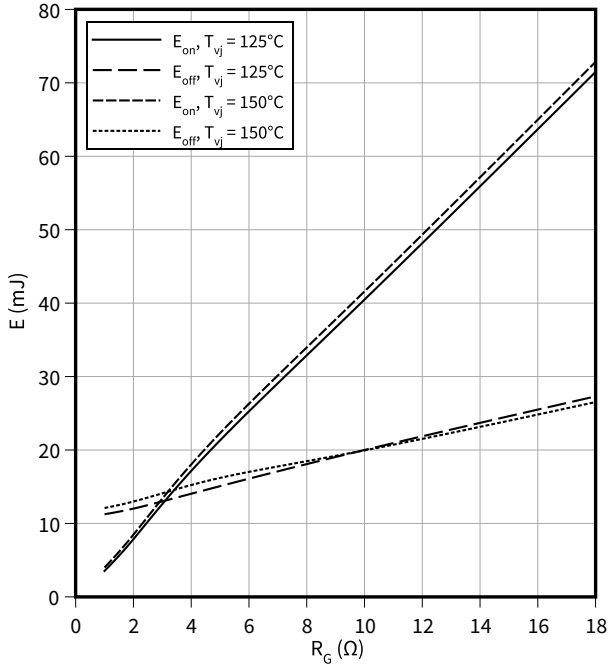


5 Characteristics diagrams

**Switching losses (typical), IGBT, Inverter**

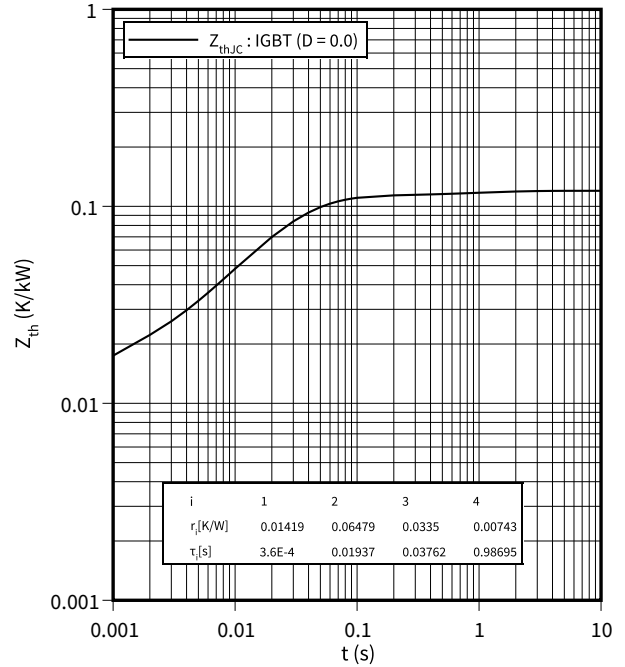
$E = f(R_G)$

$V_{CE} = 300 \text{ V}, V_{GE} = \pm 15 \text{ V}, I_C = 400 \text{ A}$



**Transient thermal impedance, IGBT, Inverter**

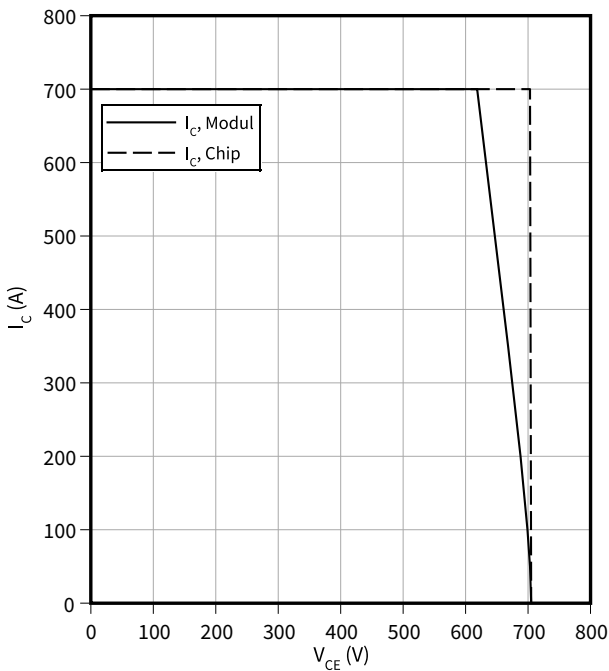
$Z_{th} = f(t)$



**Reverse bias safe operating area (RBSOA), IGBT, Inverter**

$I_C = f(V_{CE})$

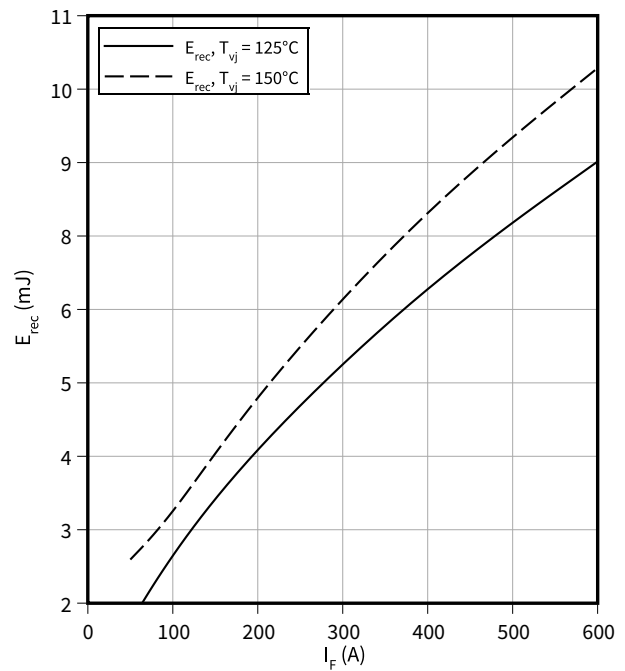
$T_{vj} = 150 \text{ °C}, R_{G,off} = 1.8 \text{ Ω}, V_{GE} = \pm 15 \text{ V}$



**Switching losses (typical), Diode, Inverter**

$E_{rec} = f(I_F)$

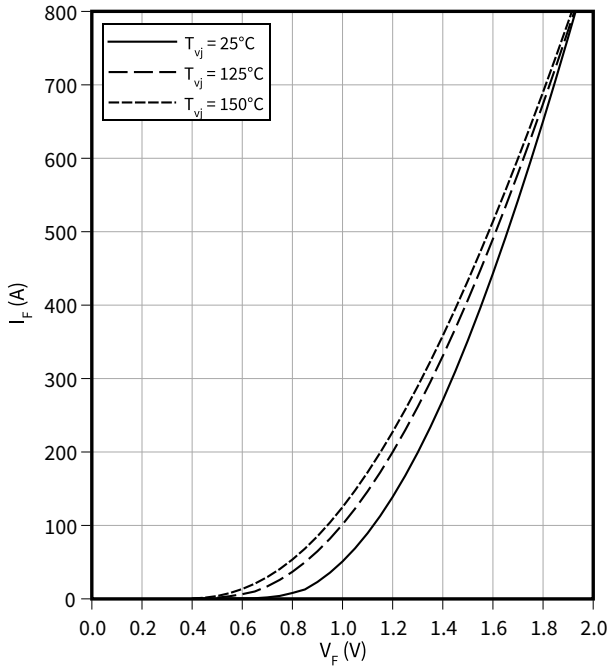
$R_{Gon} = 1.8 \text{ Ω}, V_{CE} = 300 \text{ V}$



5 Characteristics diagrams

**Forward characteristic (typical), Diode, Inverter**

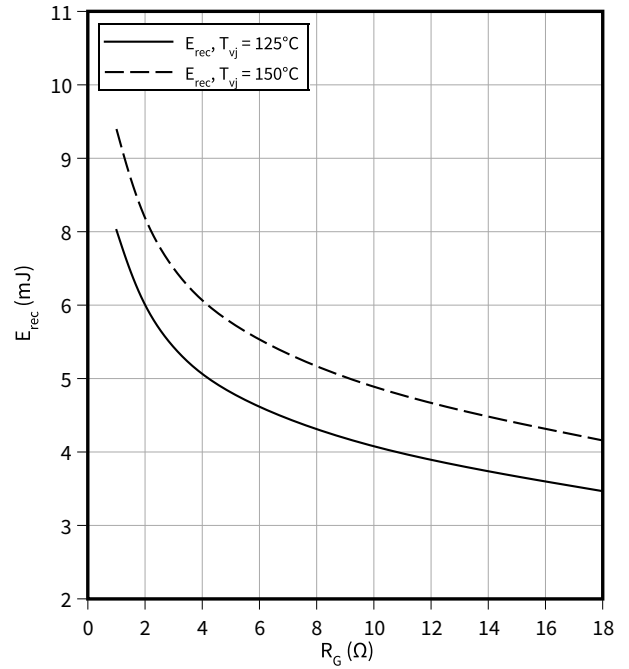
$I_F = f(V_F)$



**Switching losses (typical), Diode, Inverter**

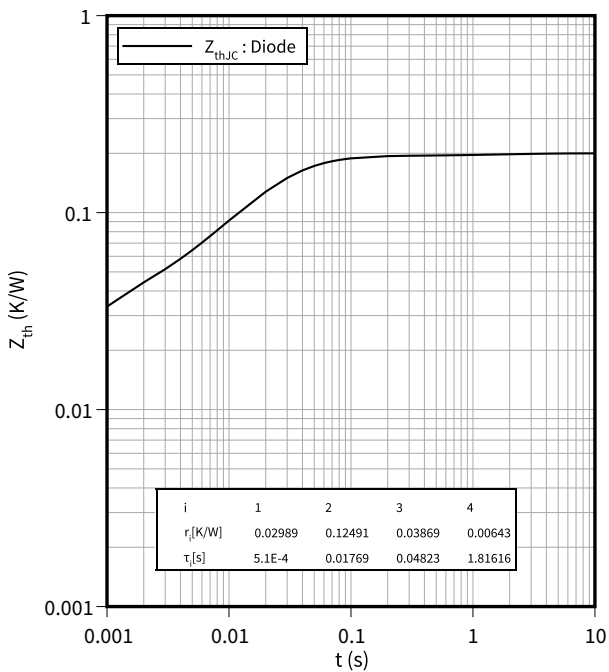
$E_{rec} = f(R_G)$

$V_{CE} = 300\text{ V}, I_F = 400\text{ A}$



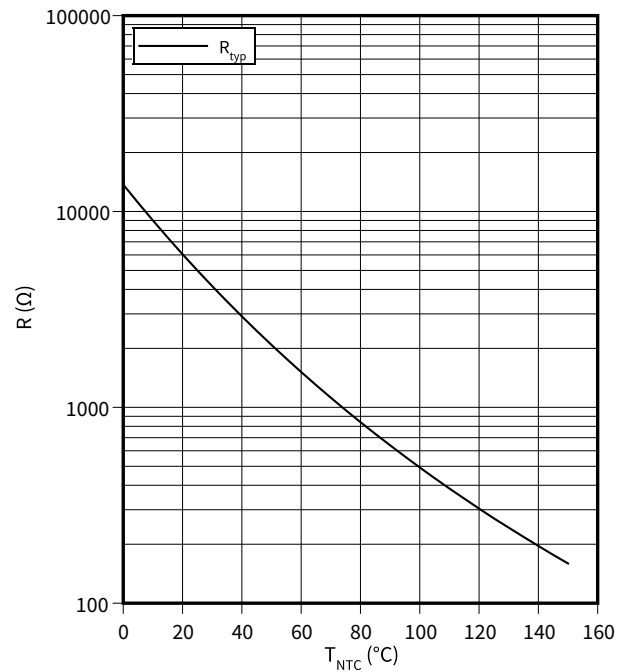
**Transient thermal impedance, Diode, Inverter**

$Z_{th} = f(t)$



**Temperature characteristic (typical), NTC-Thermistor**

$R = f(T_{NTC})$



## 6 Circuit diagram

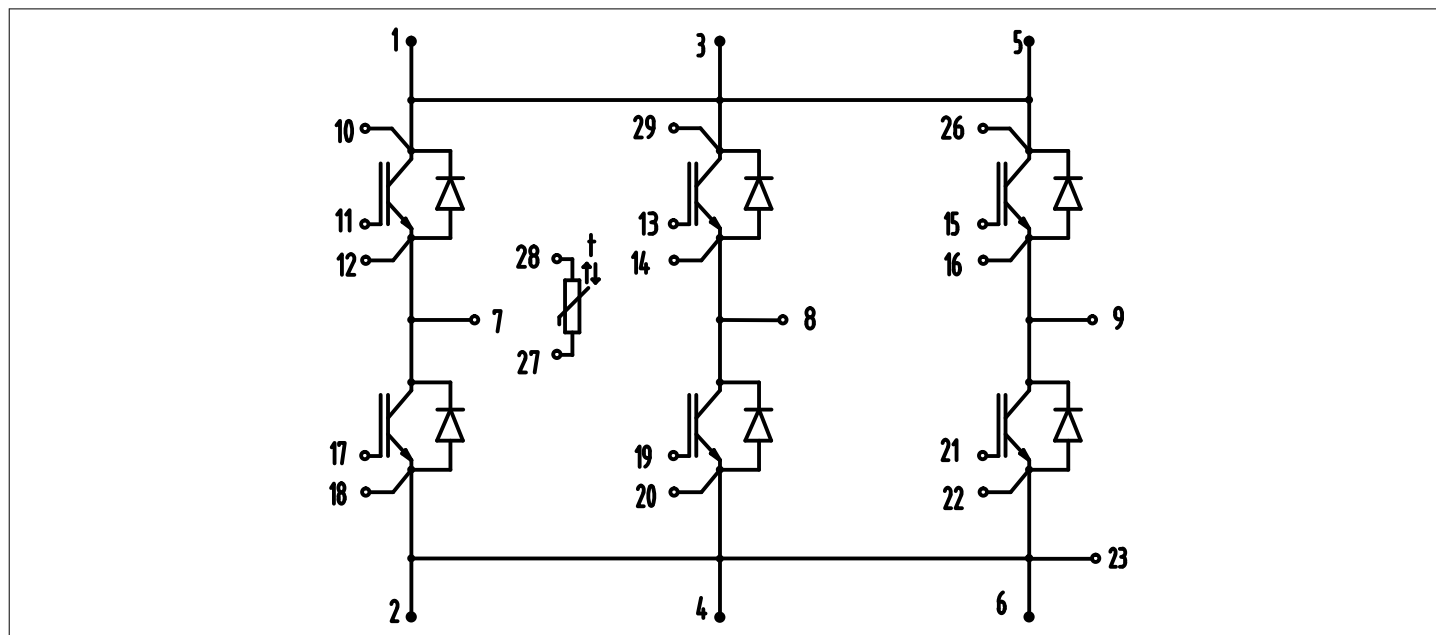
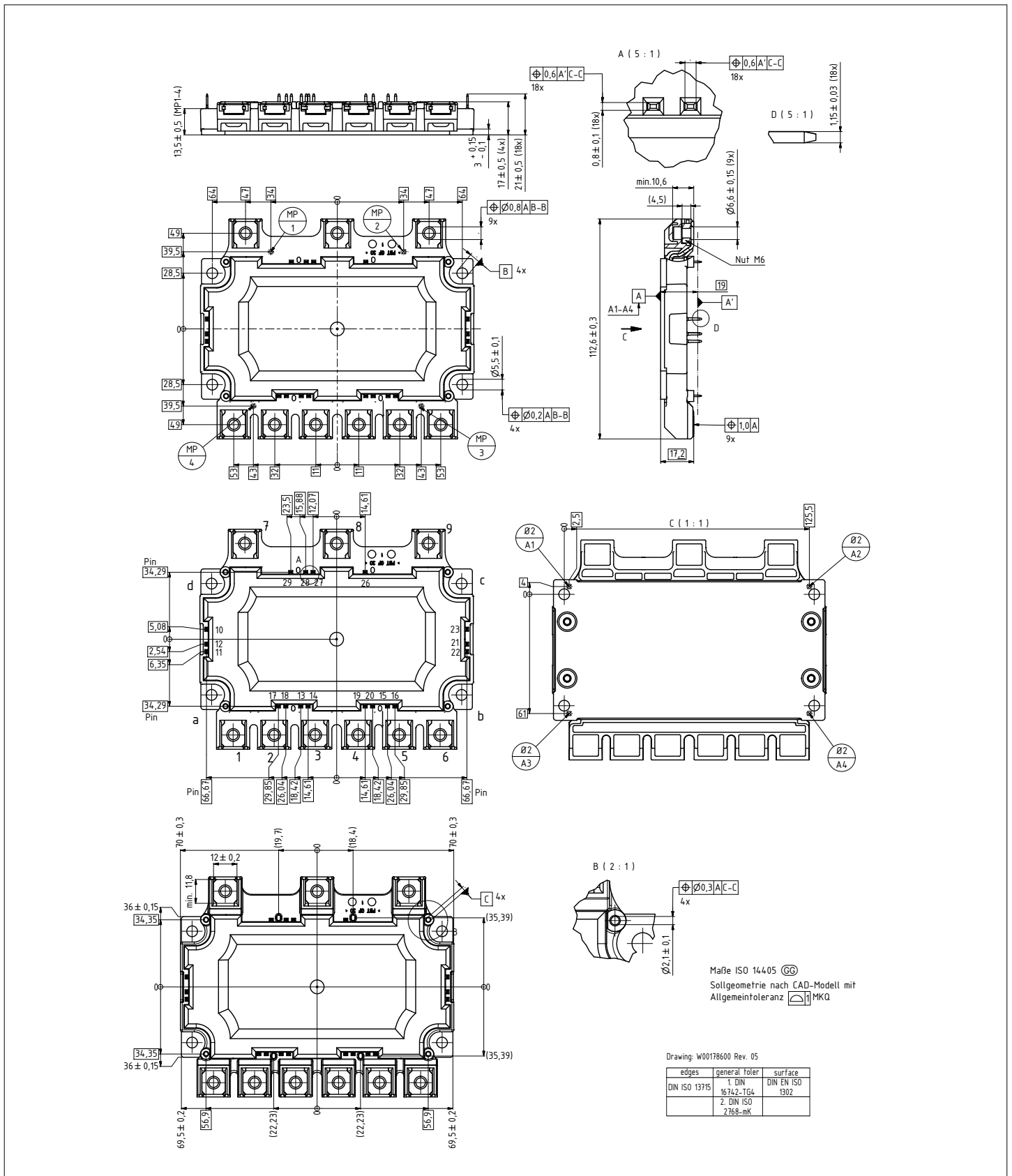





Figure 1

## 7 Package outlines



**Figure 2**

## 8 Module label code

<b>Module label code</b>				
Code format	Data Matrix	Barcode Code128		
Encoding	ASCII text	Code Set A		
Symbol size	16x16	23 digits		
Standard	IEC24720 and IEC16022	IEC8859-1		
Code content	<i>Content</i>	<i>Digit</i>	<i>Example</i>	
	Module serial number	1 - 5	71549	
	Module material number	6 - 11	142846	
	Production order number	12 - 19	55054991	
	Date code (production year)	20 - 21	15	
	Date code (production week)	22 - 23	30	
Example				
	71549142846550549911530		71549142846550549911530	
<b>Packing label code</b>				
Code format	Barcode Code128			
Encoding	Code Set A			
Symbol size	34 digits			
Standard	IEC8859-1			
Code content	<i>Content</i>	<i>Identifier</i>	<i>Digit</i>	<i>Example</i>
	Module serial number	X	2 - 9	95056609
	Module material number	1T	12 - 19	2X0003E0
	Production order number	S	21 - 25	754389
	Date code (production year)	9D	28 - 31	1139
	Date code (production week)	Q	33 - 34	15
Example				
	X950566091T2X0003E0S754389D1139Q15			

**Figure 3**

## Revision history

Document revision	Date of release	Description of changes
V1.0	2015-04-24	
V2.0	2015-11-09	
V3.0	2017-03-07	
n/a	2020-10-05	Datasheet migrated to a new system with a new layout and new revision number schema: target or preliminary datasheet = 0.xy; final datasheet = 1.xy
1.10	2021-12-21	Adjustment of package outline

## Trademarks

All referenced product or service names and trademarks are the property of their respective owners.

**Edition 2021-12-21**

**Published by**

**Infineon Technologies AG**

**81726 Munich, Germany**

**© 2021 Infineon Technologies AG**

**All Rights Reserved.**

**Do you have a question about any aspect of this document?**

**Email: [erratum@infineon.com](mailto:erratum@infineon.com)**

**Document reference**

**IFX-AAD144-004**

## IMPORTANT NOTICE

The information given in this document shall in no event be regarded as a guarantee of conditions or characteristics ("Beschaffenhheitsgarantie").

With respect to any examples, hints or any typical values stated herein and/or any information regarding the application of the product, Infineon Technologies hereby disclaims any and all warranties and liabilities of any kind, including without limitation warranties of non-infringement of intellectual property rights of any third party.

In addition, any information given in this document is subject to customer's compliance with its obligations stated in this document and any applicable legal requirements, norms and standards concerning customer's products and any use of the product of Infineon Technologies in customer's applications.

The data contained in this document is exclusively intended for technically trained staff. It is the responsibility of customer's technical departments to evaluate the suitability of the product for the intended application and the completeness of the product information given in this document with respect to such application.

## WARNINGS

Due to technical requirements products may contain dangerous substances. For information on the types in question please contact your nearest Infineon Technologies office.

Except as otherwise explicitly approved by Infineon Technologies in a written document signed by authorized representatives of Infineon Technologies, Infineon Technologies' products may not be used in any applications where a failure of the product or any consequences of the use thereof can reasonably be expected to result in personal injury.

单击下面可查看定价，库存，交付和生命周期等信息

[>>Infineon\(英飞凌\)](#)