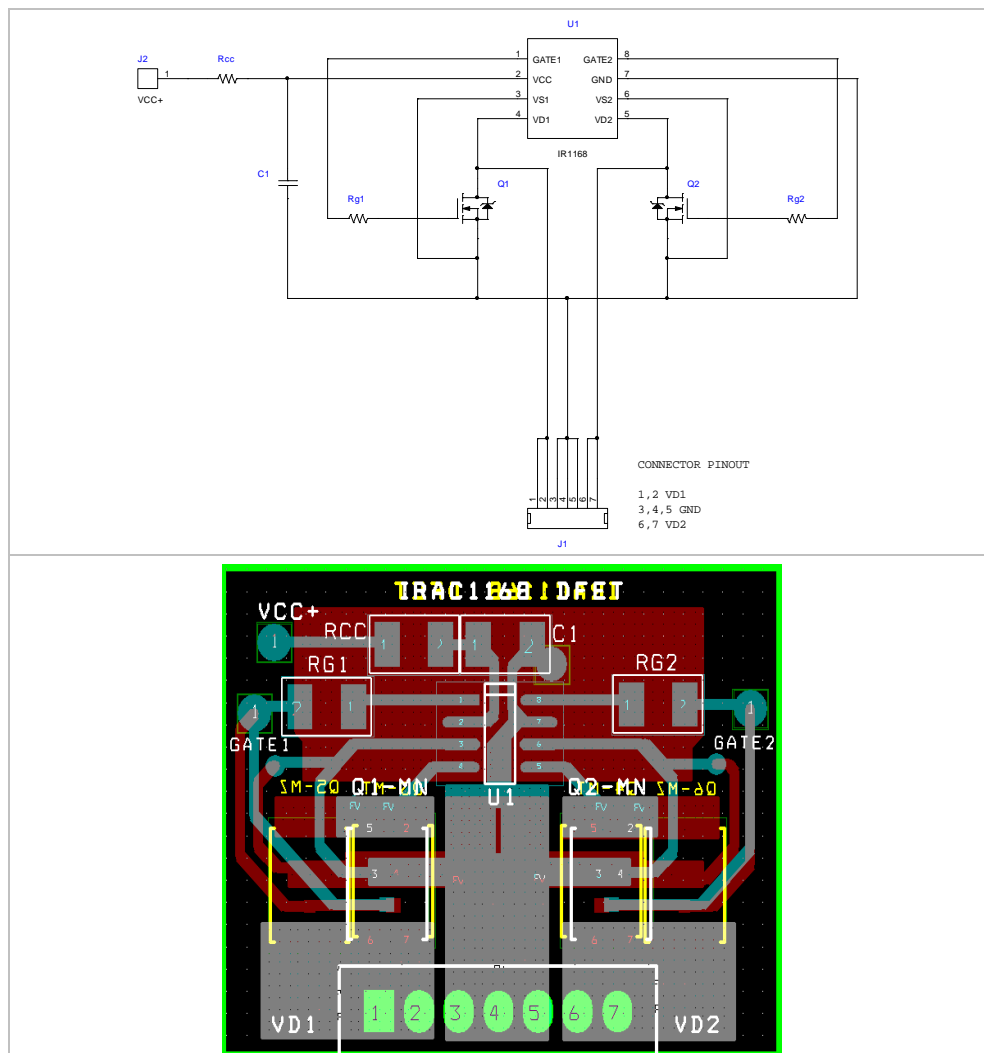


IRS1168 DFET Daughter Card

The schematic and PCB layout for the 7 pin daughter board is shown below.



The daughter card shown above is designed to allow easy retrofit in existing systems with minimal system changes. For the DFET daughter card shown above, there are multiple footprints for the synchronous rectifier MOSFETs to accommodate three different medium can DFET packages (MN, MT and MZ).

单击下面可查看定价，库存，交付和生命周期等信息

[>>Infineon Technologies\(英飞凌\)](#)