

承 认 书

SPECIFICATION FOR APPROVAL

客户名称: Customer _____

货 名: Description SMD 7040 石英晶体谐振器

客户料号: Part No _____

物料编号: Code No P7426000091040

频 率: Frequency 26.000MHz

日 期: Date 2020-06-11

备 注: RoHS compliance with Directive (EU) 2015/863

| 制作(Prepare by) | 检查(Check by) | 批准 (Approve by) |
|----------------|--------------|-----------------|
| 江丹娜 | 甘瑛 | 张刚 |

| | |
|-----------------------------|--|
| 客户批准 Approve by customer | |
| 批准日期 Approval date | |

Add:广东省深圳市华发北路桑达工业区桑达雅苑 7P

7 P Sangda Yayuan Huafa North Road, Futian District, Shenzhen, Guangdong

Tel: 86-755-83048260

86-755-83048290

Fax: 86-755-83048280

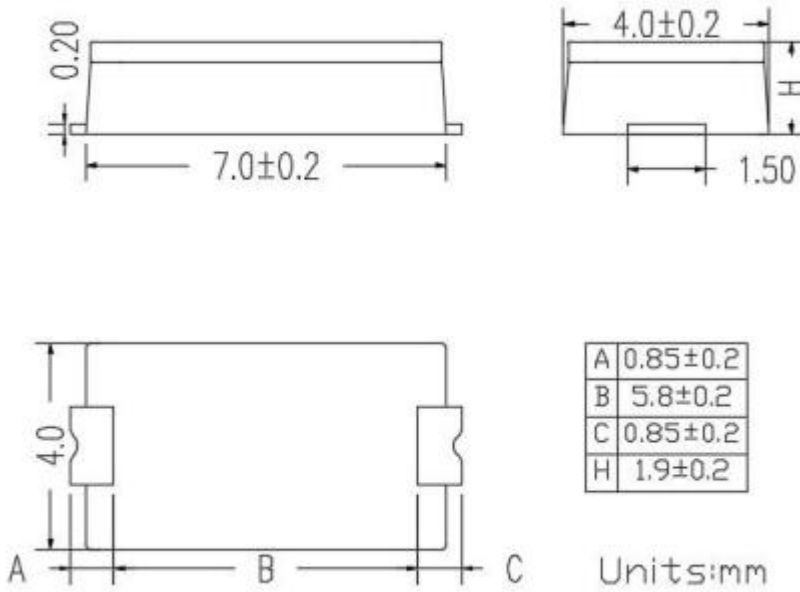
1、 Specifications

| | | |
|----|---|------------------------------|
| 1 | 规格型号 Holder Type | SMD7040 |
| 2 | 标称频率 Nominal Frequency | 26.000MHz |
| 3 | 振动模式 Mode of Oscillation | Fundamental |
| 4 | 调整频差 Frequency Tolerance at 25°C | ±10ppm |
| 5 | 温度频差 Temperature Frequency Stability | ±20ppm |
| 6 | 工作温度 Operating Temperature Range | -20~70°C |
| 7 | 贮存温度 Storage Temperature Range | -40~85°C |
| 8 | 负载电容 Load Capacitance | 9pf |
| 9 | 静态电容 Shunt capacitance | ≤7 pf |
| 10 | 动态电容 Dynamic capacitance | 15fF ±10% |
| 11 | 等效电阻 Equivalent Series Resistance | 40 Ω Max |
| 12 | 激励功率 Drive Level | 100uW |
| 13 | 绝缘阻抗 Insulation Resistance | 500MΩ/100V±15V _{DC} |
| 14 | 年老化率 Aging | ±5ppm/First year |
| 15 | 测试仪器 Test machine | 250B |

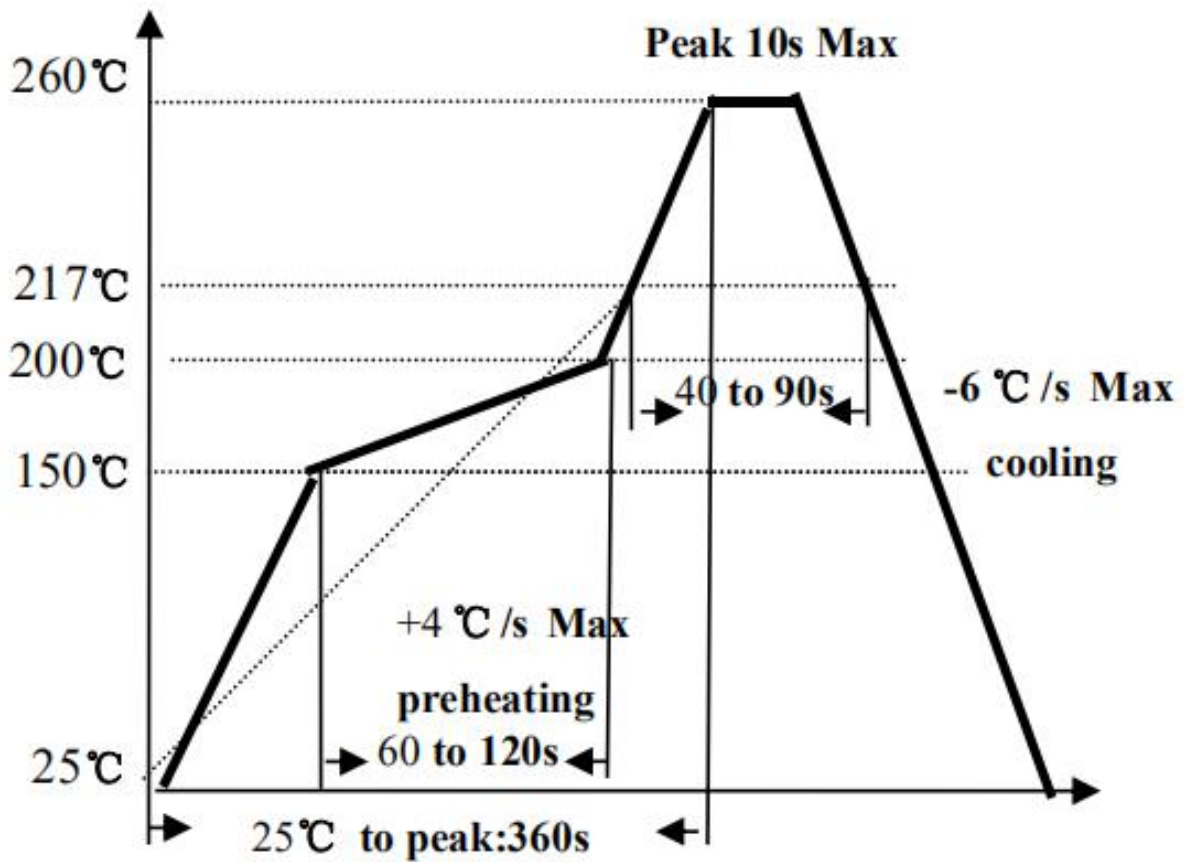
2. Frequency stability over temperature range (AT cut)

| Temperature Range | Frequency Stability | | | | | | | |
|-------------------|---------------------|-------|---------|--------|--------|--------|--------|--------|
| | ±3PPM | ±5PPM | ±7.5PPM | ±10PPM | ±20PPM | ±30PPM | ±50PPM | ±70PPM |
| 0°C ~ +50°C | ☆ | ☆ | ☆ | ☆ | ☆ | ☆ | ☆ | ☆ |
| -10°C ~ +60°C | | | ☆ | ☆ | ☆ | ☆ | ☆ | ☆ |
| -20°C ~ +70°C | | | | ☆ | ★ | ☆ | ☆ | ☆ |
| -30°C ~ +70°C | | | | | ☆ | ☆ | ☆ | ☆ |
| -40°C ~ +85°C | | | | | | ☆ | ☆ | ☆ |
| -40°C ~ +125°C | | | | | | ☆ | ☆ | ☆ |

3. Dimensions (unit:mm)



4.Recommended Reflow profile



5. Reliability specifications

| Test Item 项目 | Condition of test 实验条件及要求 | Performance Requirements 性能要求 |
|----------------------------------|--|--|
| End Strength of Electrode 端强度 | Applying 1000g force in the direction of extreme perpendicularity of the electric current for 10 +2s 在电极端垂直的方向施加 1000g 力, 时间为 10±2s | There should be no abnormalities detected on the unit 产品外观无异常 |
| Vibration 振动 | Endurance condition by a frequency sweep shall be made. The entire frequency range from 10HZ to 50HZ and return to 10HZ, shall be transverse in 1min. Amplitude(total excursion):1.5mm this motion shall be applied for a period of 2h each of 3 mutually perpendicular axes(a total of 6h) 振动频率: 从 10HZ 到 55HZ,再回到 10HZ 1 倍频程/min 幅度为 1.5mm 3 个相互垂直的方向各 2 小时 | (1). Frequency Change: +/-5ppm (2). Resistance: +/-15 % |
| Drop 跌落 | Form 70cm height 3 times on 3cm hard wooden floor 从 70cm 高处跌落到 3cm 厚的硬质木板上, 重复 3 次 | |
| Shock 冲击 | Peak acceleration:981m/s ² duration of the pulse :6ms three successive shocks shall be applied in both direction of 3 mutually perpendicular axes(a total of 18 shocks) 加速度: 981m/s ² 时间: 6ms 作用在 3 个相互垂直的方向 | |
| Damp heat, constant 恒定湿热 | The unit shall be stored at a temperature of 40°C±2°C with relative humidity of 90%to95% for 48h, then it shall be subjected to standard atmospheric conditions for 1~2h after which measurement shall be made. 在温度: 40°C±2°C、湿度: 90%to95%条件下存放 48 小时, 然后在标准大气压下放置 1~2 小时后测试 | |
| Cold 低温存储 | The unit shall be stored at a temperature of -40°C±5°C for 48h, then it shall be subjected to standard atmospheric conditions for 1~2h after which measurement shall be made. 在-40°C±5°C下存放 48 小时, 然后在标准大气压下放置 1~2 小时后测试 | |
| Dry heat 高温存储 | The unit shall be stored at a temperature of 100°C±5°C for 24h, then it shall be subjected to standard atmospheric conditions for 1~2h after which measurement shall be made. 100°C±5°C下存放 24 小时, 然后在标准大气压下放置 1~2 小时后测试 | |
| Aging 老化 | The unit shall be stored at a temperature of 85°C±5°C for 7d then it shall be subjected to standard atmospheric conditions for 1~2h after which measurement shall be made. 85°C±5°C下放置 7 天, 然后在标准大气压下放置 1~2 小时后测试 | |

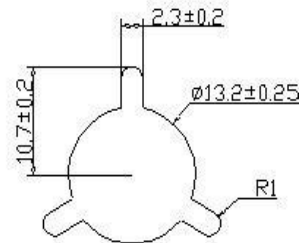
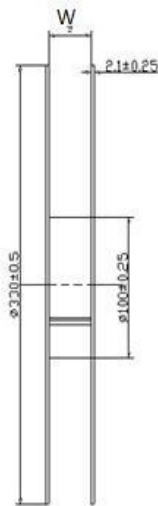
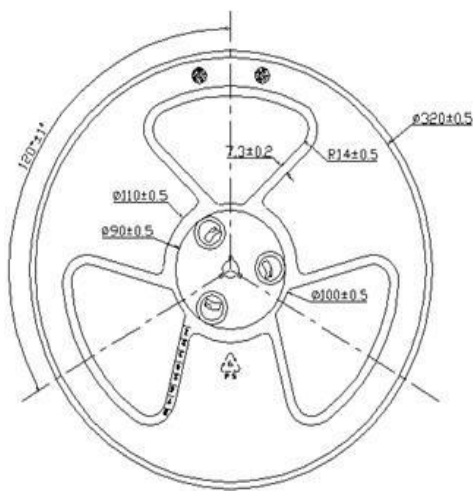
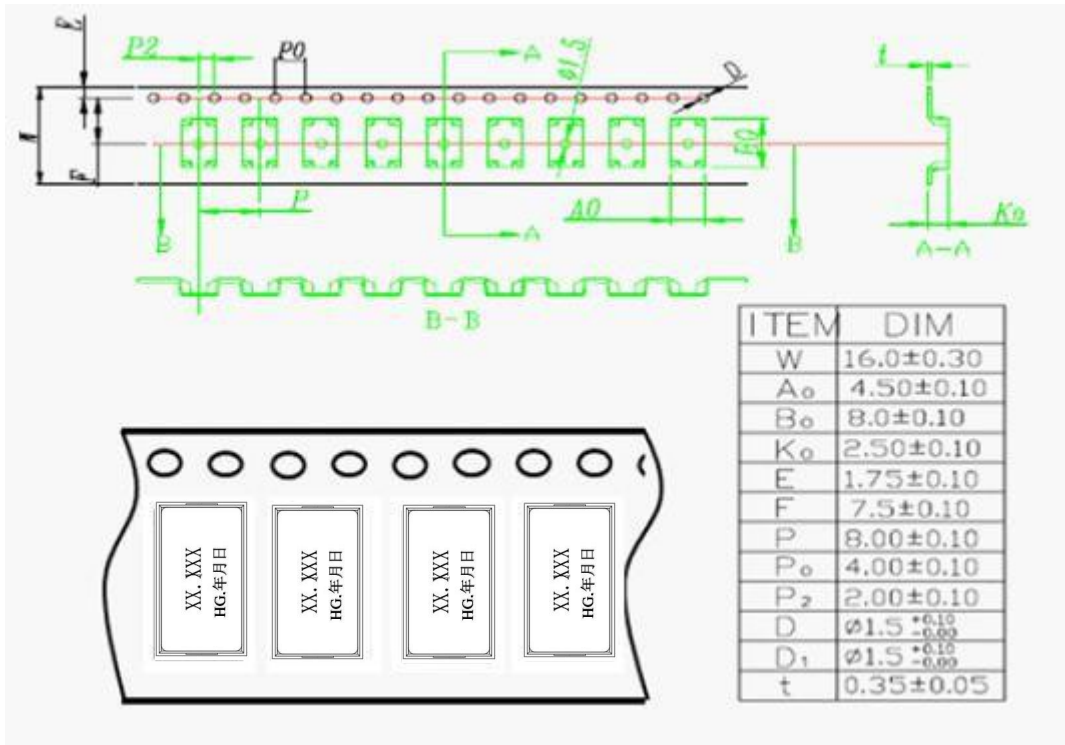
Environmental 可靠性试验

| Test Item 项目 | Condition of test 实验条件及要求 | Performance Requirements 性能要求 | | | | | | | | | | | | | | | |
|-----------------------------|---|--|--|---------------------|---------------|---|---------|---------------|---|--|---------------------|---|---------|---------------|---|--|---------------------|
| Temperature cycling 温度循环 | The unit shall be subjected to 5 successive change of temperature cycles, each as show in table below, then it shall be subjected to standard atmospheric conditions for 1~2h after which measurement shall be made 在下表给定温度和时间参数的条件下循环 5 次, 标准大气压下放置 1~2 小时后测试 | (1).Frequency Change: +/-5ppm (2). Resistance:+/-15% | | | | | | | | | | | | | | | |
| | <table border="1"> <thead> <tr> <th>序号 The serial number</th> <th>Temperature 温度</th> <th>Duration 放置时间</th> </tr> </thead> <tbody> <tr> <td>1</td> <td>-40℃±3℃</td> <td>30min (30 分钟)</td> </tr> <tr> <td>2</td> <td>Standard atmospheric conditions 标准大气压</td> <td>Within 30s 30 秒内</td> </tr> <tr> <td>3</td> <td>100℃±3℃</td> <td>30min (30 分钟)</td> </tr> <tr> <td>4</td> <td>Standard atmospheric conditions 标准大气压</td> <td>Within 30s 30 秒内</td> </tr> </tbody> </table> | | 序号 The serial number | Temperature 温度 | Duration 放置时间 | 1 | -40℃±3℃ | 30min (30 分钟) | 2 | Standard atmospheric conditions 标准大气压 | Within 30s 30 秒内 | 3 | 100℃±3℃ | 30min (30 分钟) | 4 | Standard atmospheric conditions 标准大气压 | Within 30s 30 秒内 |
| | 序号 The serial number | | Temperature 温度 | Duration 放置时间 | | | | | | | | | | | | | |
| | 1 | | -40℃±3℃ | 30min (30 分钟) | | | | | | | | | | | | | |
| | 2 | | Standard atmospheric conditions 标准大气压 | Within 30s 30 秒内 | | | | | | | | | | | | | |
| 3 | 100℃±3℃ | 30min (30 分钟) | | | | | | | | | | | | | | | |
| 4 | Standard atmospheric conditions 标准大气压 | Within 30s 30 秒内 | | | | | | | | | | | | | | | |
| | | | | | | | | | | | | | | | | | |
| | | | | | | | | | | | | | | | | | |
| | | | | | | | | | | | | | | | | | |

6、上板焊接使用要求

1. 使用贴片机自动上板贴片。
2. 手动焊接时不能使用风枪直对准上盖通过整个产品导热进行焊接, 可设置温度 240 度以下通过 45 度倾斜对准产品电极进行融锡焊接。

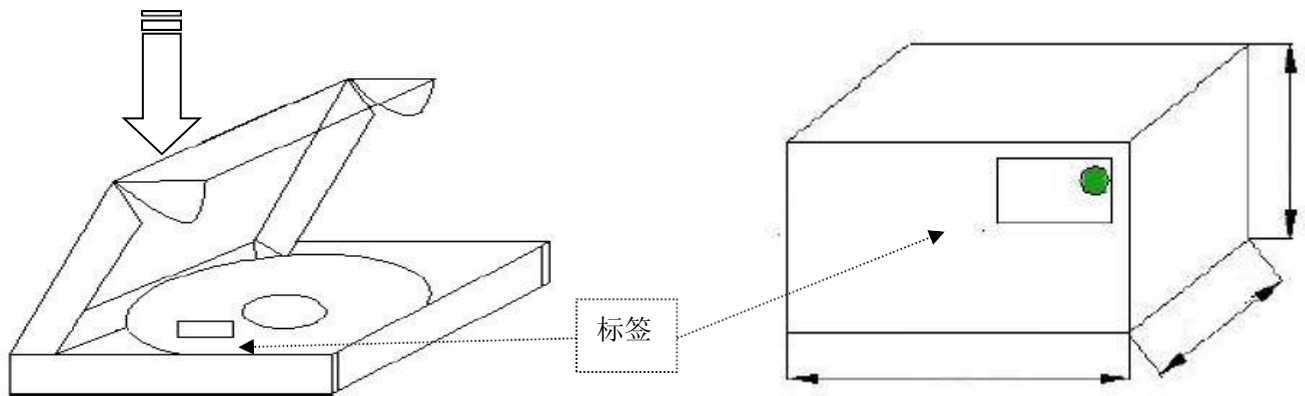
7. Type & Reel 编带类型及卷盘



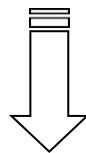
| Available Reel Size (mm) \varnothing | |
|--|------------------------------|
| Tape width \varnothing | $W \pm 0.3$ mm \varnothing |
| 24 mm \varnothing | 24.4 \varnothing |

8. Packing Specification 包装说明

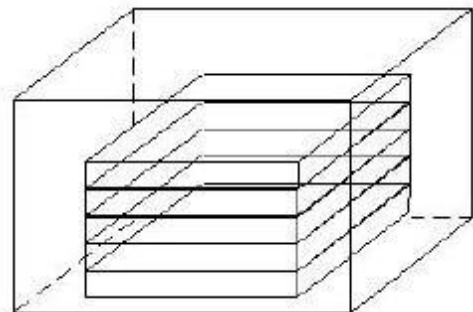
1. 每小盒数量: 3000PCS
2. 每大箱数量: 30000PCS (10×inner box)



1 盒放 1 盘 (3000PCS)



外箱放 10 盒 (30000PCS)

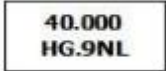


9. MARKING



| | | | | | | | | | | | | |
|----|------|------|------|------|------|------|------|------|------|------|------|------|
| 年份 | 2019 | 2020 | 2021 | 2022 | 2023 | 2024 | 2025 | 2026 | 2027 | 2028 | 2029 | 2030 |
| 代码 | 9 | 0 | 1 | 2 | 3 | 4 | 5 | 6 | 7 | 8 | 9 | 0 |
| 月份 | 1月 | 2月 | 3月 | 4月 | 5月 | 6月 | 7月 | 8月 | 9月 | 10月 | 11月 | 12月 |
| 代码 | 1 | 2 | 3 | 4 | 5 | 6 | 7 | 8 | 9 | O | N | D |
| 日期 | 1 | 2 | 3 | 4 | 5 | 6 | 7 | 8 | 9 | 10 | 11 | 12 |
| 代码 | A | B | C | D | E | F | G | H | I | J | K | L |
| 日期 | 13 | 14 | 15 | 16 | 17 | 18 | 19 | 20 | 21 | 22 | 23 | 24 |
| 代码 | M | N | O | P | Q | R | S | T | U | V | W | X |
| 日期 | 25 | 26 | 27 | 28 | 29 | 30 | 31 | | | | | |
| 代码 | Y | Z | 1 | 2 | 3 | 4 | 5 | | | | | |

如 2019 年 11 月 12 日生产 40M 产品，则打标为：



单击下面可查看定价，库存，交付和生命周期等信息

[>>JGHC\(晶光华\)](#)