

*Parameters Subject to Change Without Notice*

### DESCRIPTION

JW<sup>®</sup>7112 is a small, low  $R_{ON}$ , signal-channel power-distribution switch with controlled turn-on slew rate. The device contains a N-channel MOSFET that can operate over an input voltage range of 2.8V to 16V and can support a maximum continuous current of 3A. Externally programmable rising time control helps to minimize input inrush current during start-up.

The wide input voltage range of the switch makes JW7112 versatile solution for many different voltage rails. The EN pin controls ON/OFF for each JW7112 distribution switch, so one DC/DC converter can deliver power to several requirements and total power efficiency is maximized. JW7112 provide a complete protection solution, including current-limit protection, short-circuit protection (SCP), over-temperature protection (OTP) and under voltage lockout protection (UVLO). The device offers a programmable current-limit threshold via an external resistor.

The JW7112 integrates a 50 $\Omega$  pull-down resistor for quick output discharge when the switch is turned off.

*Company's Logo is Protected, "JW" and "JOULWATT" are Registered Trademarks of JoulWatt technology Inc.*

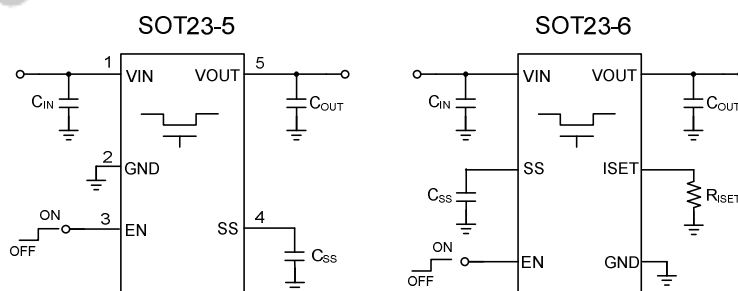
### FEATURES

- 2.8V to 16V Operating Input Range
- 50m $\Omega$  On Resistance
- Low 150 $\mu$ A Quiescent Current
- Low Shutdown Current: < 10 $\mu$ A
- ON/OFF Control
- Programmable Output Current Limit
- Configurable Output Voltage Rise Time
- Constant-Current During Short-circuit
- Over-temperature Protection
- Under Voltage Lockout Protection
- Quick Output Discharge

### APPLICATIONS

- LCD Monitor TV
- USB Ports
- Laptop, Notebook Computers
- Portable Equipment

### TYPICAL APPLICATION



单击下面可查看定价，库存，交付和生命周期等信息

[>>JOULWATT\(杰华特\)](#)