

Surface mounting type connector of bottom entry type developed for instruments for automobile.

Features

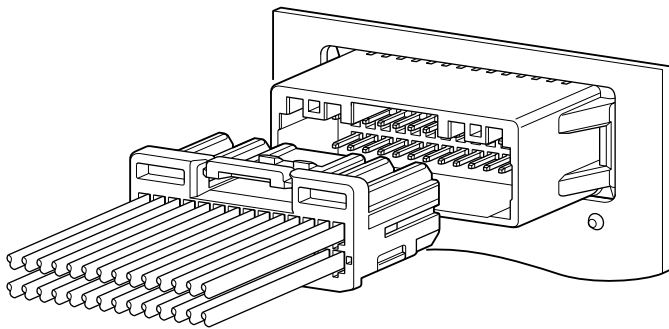
●High reliability

Using the tried and true terminal ensures high performance and high reliability.

The retainer (secondary lock) is provided for automobile, and reliability is improved.

●Surface mounting

Corresponding to the surface mounting, workability is improved.



Specifications

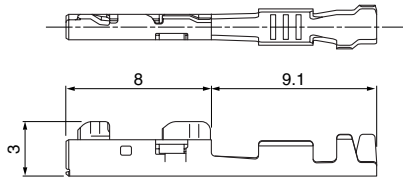
- Current rating: 5A AC, DC (0.5mm², Single circuit)
- Voltage rating: 50V AC, DC
- Temperature range: -30°C to +105°C
(including temperature rise in applying electrical current)
- Contact resistance: Initial value/8mΩ max.
After environmental testing/16mΩ max.
- Insulation resistance: 100MΩ min.
- Withstanding voltage: 1,000V AC/minute
- Applicable wire: AVSS/CAVS
0.64 Terminal S; 0.3mm² to 0.5mm²
CHFUS
0.64 Terminal SSS/SS; 0.13mm² to 0.35mm²

* Compliant with ELV/RoHS.

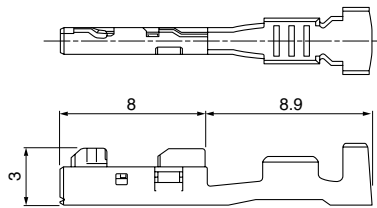
* Contact JST for details.

Female terminal

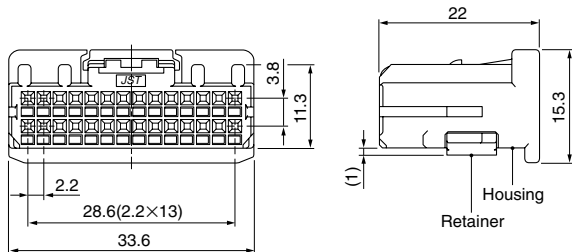
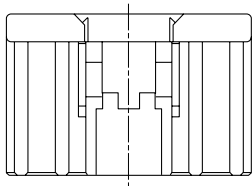
• 0.64 Female terminal SSS/SS



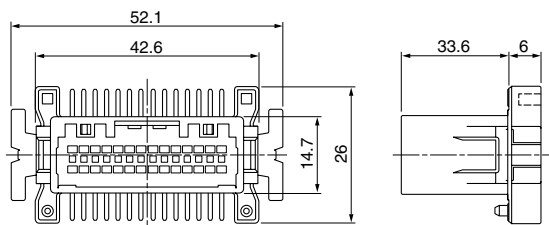
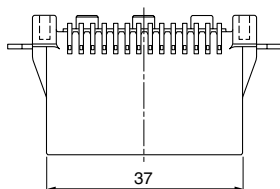
• 0.64 Female terminal S



Female connector



Male connector



Terminal	Model No.	Applicable wire range		Q'ty/reel
		Conductor (mm ²)	Insulation O.D. (mm)	
0.64 SSS	SNAC3-A001T-M0.64	0.13	0.85	6,000
0.64 SS	SNAC3-A011T-M0.64	0.22 to 0.35	0.95 to 1.10	5,000
0.64 S	SNAC3-A021T-M0.64	0.3 to 0.5	1.4 to 1.8	5,000

Material and Finish

Copper alloy, tin-plated (reflow treatment)

Note: Contact JST for 2.3II female terminal for power supply.

Circuits	Model No.	Q'ty/box
28	28BMD-B-01A	130

Material

Housing: PBT, black
Retainer: PBT, blue

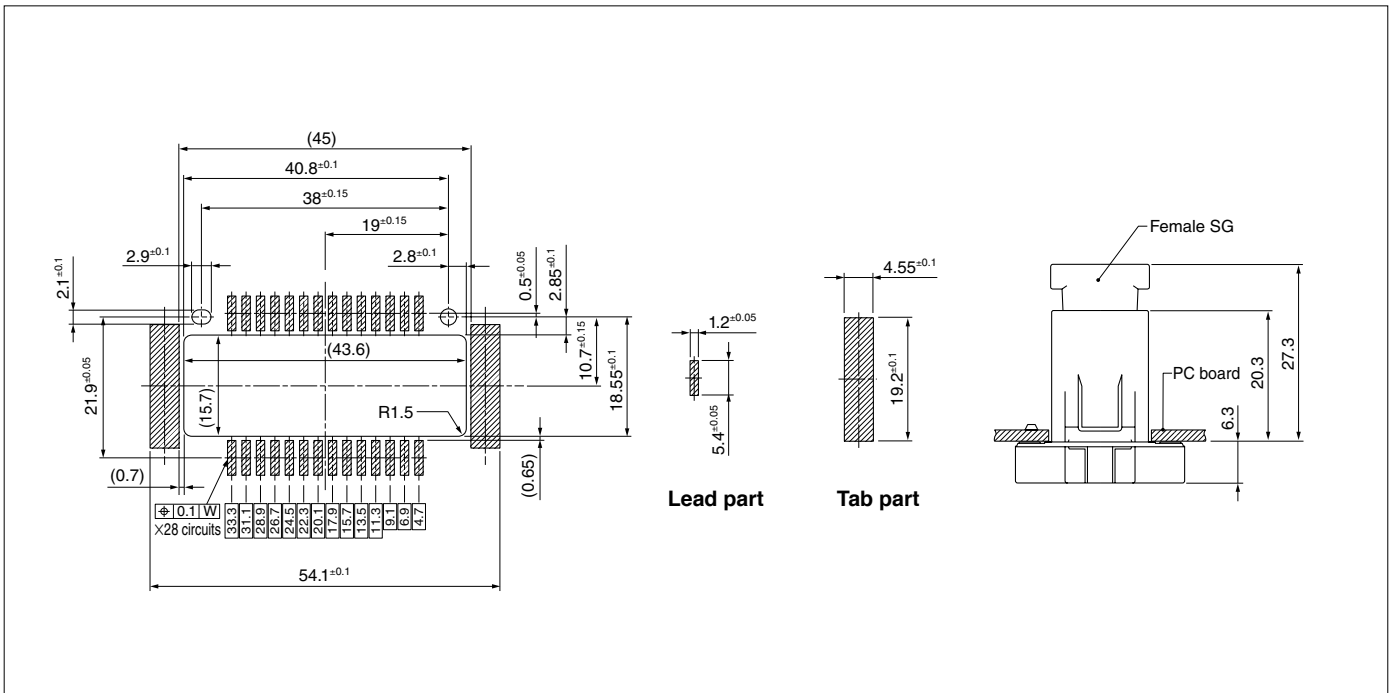
Circuits	Model No.	Q'ty/box
28	EM28B-BMDK-01A (M)	252

Material and Finish

Pin: Brass, nickel-undercoated, tin-plated (reflow treatment)
Housing: Glass-filled PPS, black
Peg: Brass, nickel-undercoated, tin-plated (reflow treatment)

BMD CONNECTOR

PC board layout, Assembly layout



Note: 1. Tolerances are non-cumulative: $\pm 0.05\text{mm}$ for all centers.
 2. The dimensions above should serve as guideline. Contact JST for details.

Crimping machine, Applicator, Hand crimp tool

Strip terminal	Crimping machine	Crimp applicator MKS-L		Hand crimp tool	Applicable wire
		Dies	Crimp applicator with dies		
SNAC3-A001T-M0.64	AP-K2N	MK/SNAC3-A001-064	APLMK SNAC3-A001-064	—	—
SNAC3-A011T-M0.64		MK/SNAC3-A011-064	APLMK SNAC3-A011-064	—	—
SNAC3-A021T-M0.64		MK/SNAC3-A021-064	APLMK SNAC3-A021-064	YRK-1003	AVSS0.5, CAVS0.5

Note: When crimping operation is conducted using an applicator and die set other than the above, JST cannot guarantee the performance of the terminal.

单击下面可查看定价，库存，交付和生命周期等信息

[>>JST\(杰世腾\)](#)