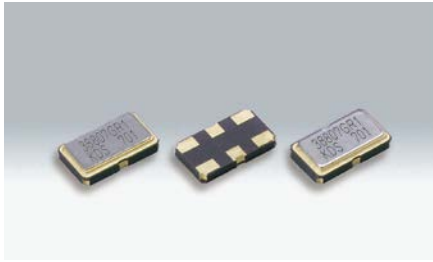


表面贴装型晶体滤波器

DSF633S 4POLE (SDF TYPE)



实际尺寸

■ 优点

- 外形尺寸:6035尺寸、厚度1.1mm、小型·轻量(0.072g)SMD类型
- 通过单体实现4POLE特性
- 保证衰减量特性卓越
- 耐撞击性、耐振动性卓越

■ 用途

- 商务无线等无线通信机



■ 一般规格

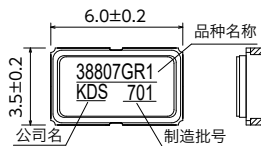
| 型号 | DSF633SDF | | | | |
|---------|---------------------|--------------------|----------------------|-------------------|----------------------|
| 品种名称 | D38807GR | D49903GR | D58010GR | D73312GR | DA3050GR |
| 极数 | 4 | 4 | 4 | 4 | 4 |
| 谐波次数 | Fundamental | Fundamental | Fundamental | Fundamental | Fundamental |
| 公称频率 | 38.850 MHz | 49.950 MHz | 58.050 MHz | 73.350MHz | 130.000MHz |
| 通带带宽 | ±3.75kHz min./3dB | ±1.75kHz min./3dB | ±5.0kHz min./3dB | ±6.0 kHz min./3dB | ±25.0 kHz min./3dB |
| 阻带带宽 | ±15.0kHz min./35dB | ±6.25kHz max./20dB | ±12.5kHz max./25dB | ±25 kHz max./40dB | ±100 kHz max./35dB |
| 脉动 | 1dB max. | 1dB max. | 1dB max. | 1 dB max. | 1 dB max. |
| 插入损耗 | 6dB max. | 6dB max. | 5dB max. | 5 dB max. | 5 dB max. |
| 保证衰减量 | 76dB min. | 76dB min. | 80dB min. | 80 dB min. | 70 dB min. |
| 终端阻抗 | 710Ω//4pF Cc=12.5pF | 150Ω//11pF Cc=33pF | 450Ω//4.5pF Cc=9.5pF | 380Ω//5pF Cc=11pF | 560Ω//0.2pF Cc=3.5pF |
| 运行温度范围 | -20~+70°C | | | | |
| 包装单位(1) | 1000pcs./reel(φ180) | | | | |

(1) 无需防湿包装管理 Moisture Sensitivity Level: LEVEL1 (IPC/JEDEC J-STD-033)

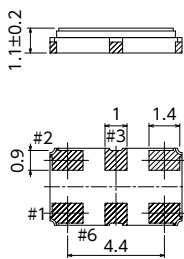
有关其他规格或者特殊规格请咨询营业部门。

[mm]

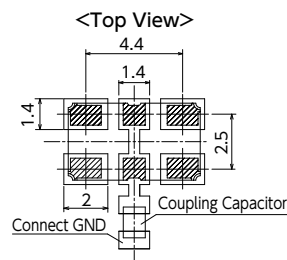
■ 外形尺寸



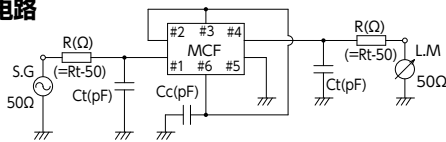
| Pin No. | Connection |
|---------|-----------------|
| #1 | INPUT |
| #2 | GND. |
| #3 | Connect with #6 |
| #4 | OUTPUT |
| #5 | GND. |
| #6 | Connect with #3 |



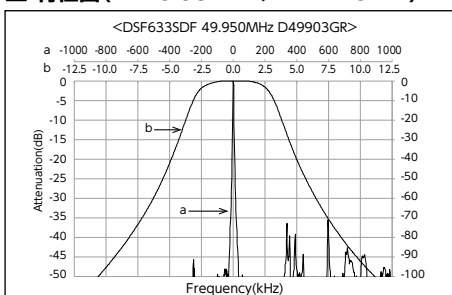
■ 焊盘图形 (参考)



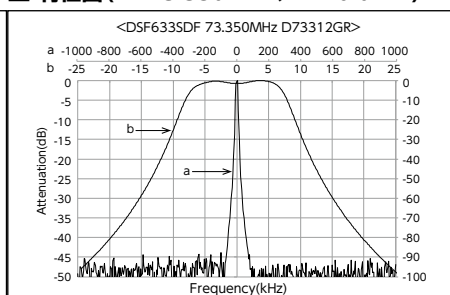
■ 测量电路



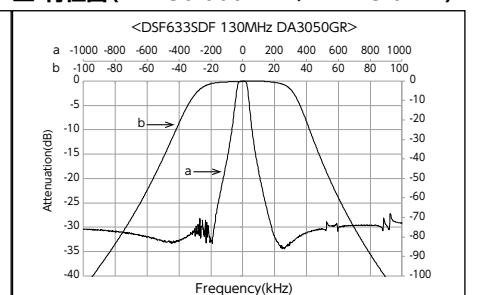
■ 特性图 (fo=49.95MHz, P=±1.75kHz)



■ 特性图 (fo=73.350MHz, P=±6.0kHz)



■ 特性图 (fo=130.000MHz, P=±25.0kHz)



单击下面可查看定价，库存，交付和生命周期等信息

[>>KDS\(大真空\)](#)