

ULTRA HIGH SPEED SWITCHING APPLICATION.

FEATURES

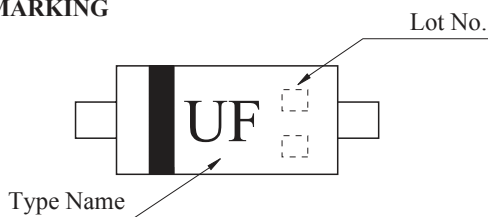
- Small Package : USC.
- Low Forward Voltage.
- Fast Reverse Recovery Time.
- Small Total capacitance.
- Suffix **U** : Qualified to AEC-Q101.
ex) KDS160-RTK/**HU**
- Suffix **A** : USC(1) Package
ex) KDS160-RTK/**PA**

MAXIMUM RATING (Ta=25°C)

CHARACTERISTIC	SYMBOL	RATING	UNIT
Maximum (Peak) Reverse Voltage	V_{RM}	85	V
Reverse Voltage	V_R	80	V
Maximum (Peak) Forward Current	I_{FM}	300	mA
Average Forward Current	I_O	100	mA
Surge Current (10mS)	I_{FSM}	2	A
Power Dissipation	P_D^*	200	mW
Junction Temperature	T_j	150	°C
Storage Temperature Range	T_{stg}	-55 ~ 150	°C

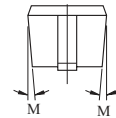
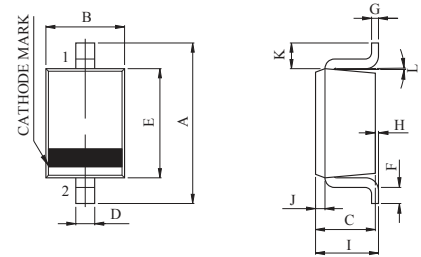
* : Mounted on a glass epoxy circuit board of 20×20mm, pad dimension of 4×4mm.

MARKING



ELECTRICAL CHARACTERISTICS (Ta=25°C)

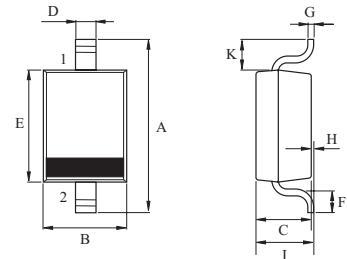
CHARACTERISTIC	SYMBOL	TEST CONDITION	MIN.	TYP.	MAX.	UNIT
Forward Voltage	$V_{F(1)}$	$I_F=1mA$	-	0.60	-	V
	$V_{F(2)}$	$I_F=10mA$	-	0.72	-	
	$V_{F(3)}$	$I_F=100mA$	-	0.90	1.20	
Reverse Current	I_R	$V_R=80V$	-	-	0.5	μA
Total Capacitance	C_T	$V_R=0V, f=1MHz$	-	0.9	3.0	pF
Reverse Recovery Time	t_{rr}	$I_F=10mA$	-	1.6	4.0	nS



1. ANODE
2. CATHODE

DIM	MILLIMETERS
A	2.50±0.2
B	1.25±0.05
C	0.90±0.05
D	0.30±0.06
E	1.70±0.05
F	0.27±0.10
G	0.126±0.03
H	0-0.1
I	1.0 MAX
J	0.15±0.05
K	0.4
L	2° +4/-2
M	4-6°

USC



DIM	MILLIMETERS
A	2.6±0.1
B	1.3±0.1
C	0.85±0.05
D	0.3±0.05
E	1.7±0.1
F	0.325±0.075
G	0.115±0.035
H	0.05±0.05
I	Max 1.0
K	Typ 0.475

USC(1)

KDS160

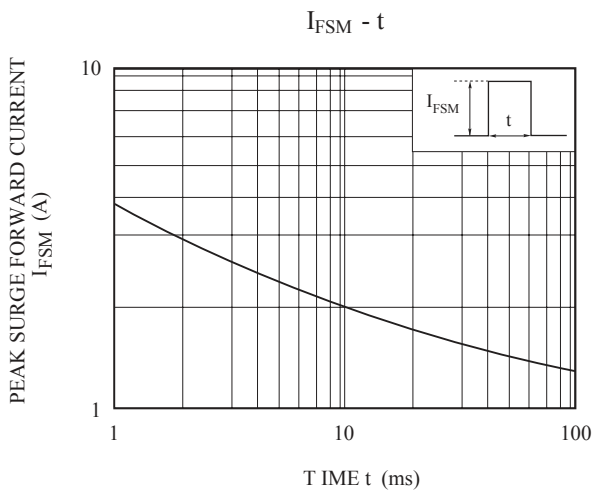
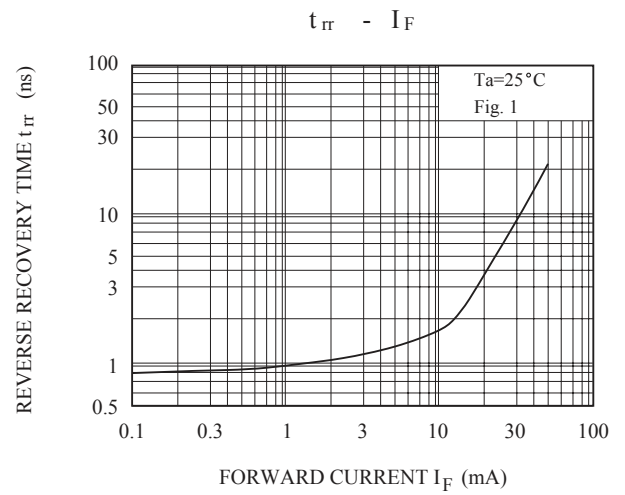
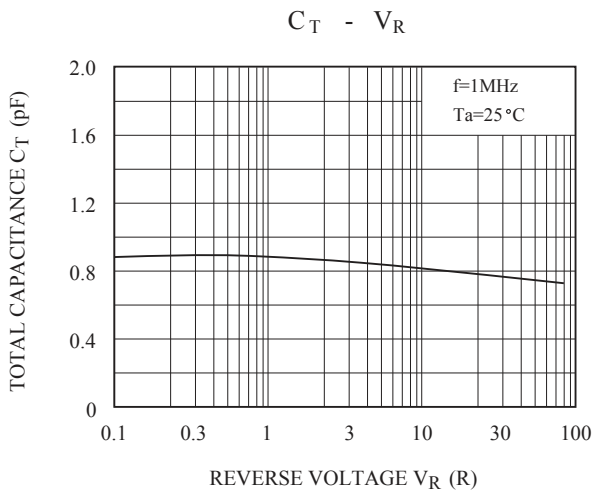
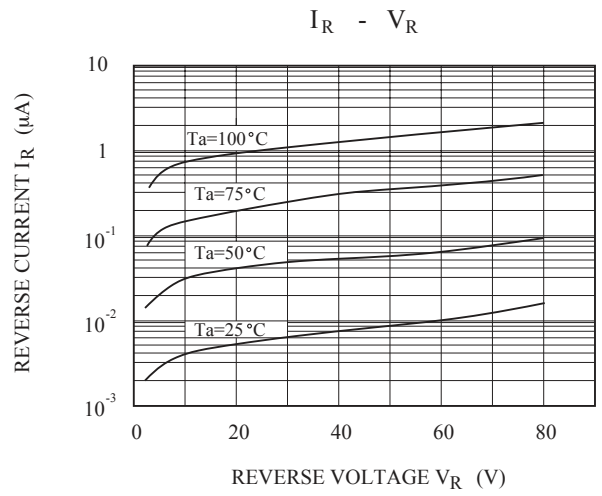
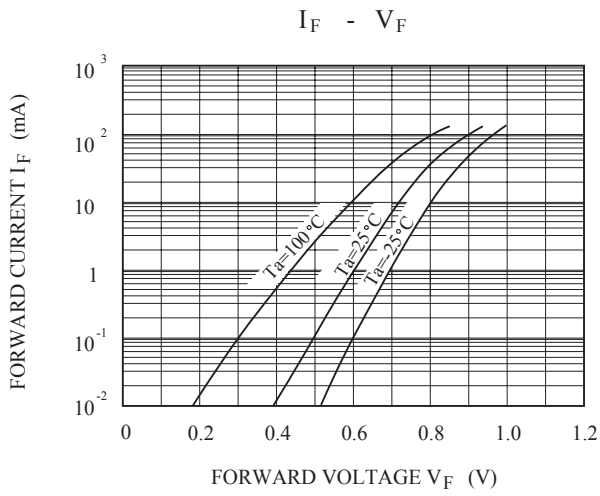
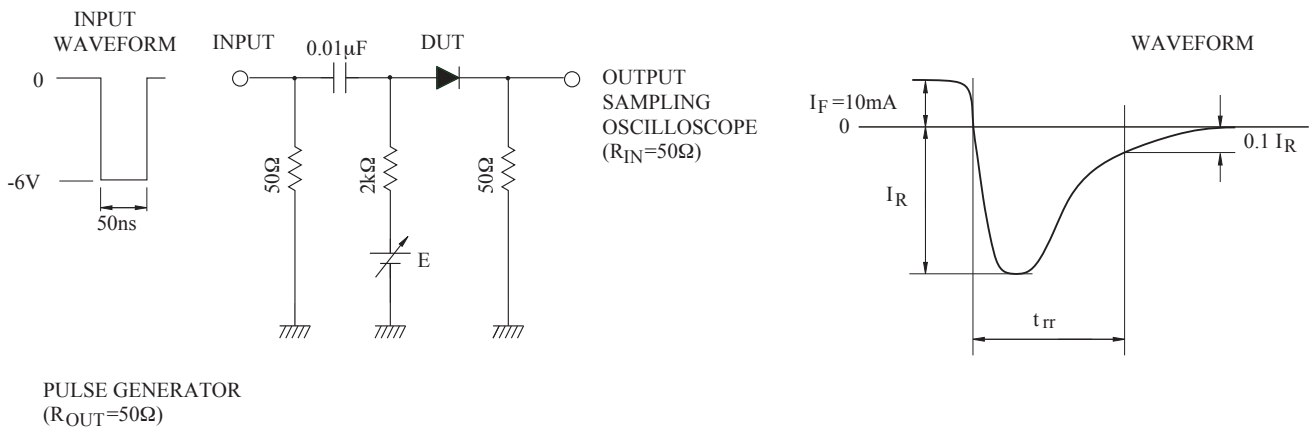


Fig. 1. REVERSE RECOVERY TIME(t_{rr}) TEST CIRCUIT



单击下面可查看定价，库存，交付和生命周期等信息

[>>KEC\(开益禧\)](#)