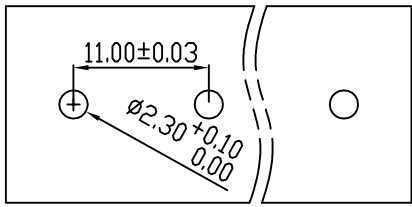
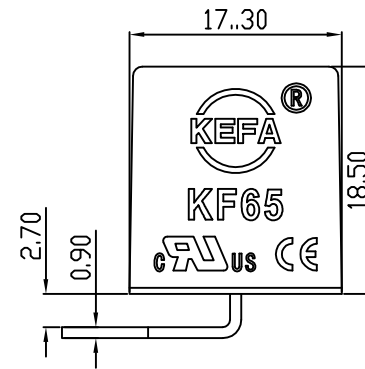
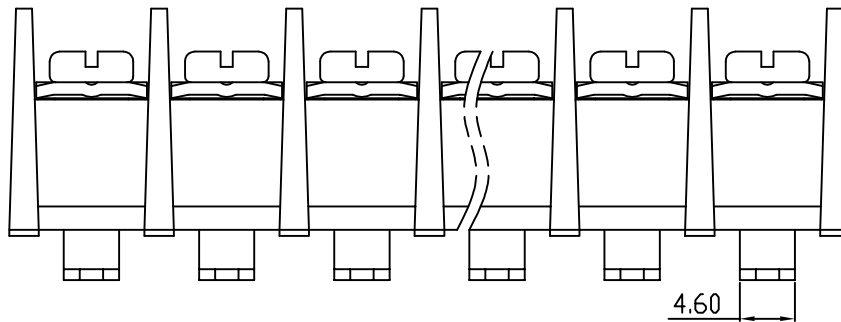
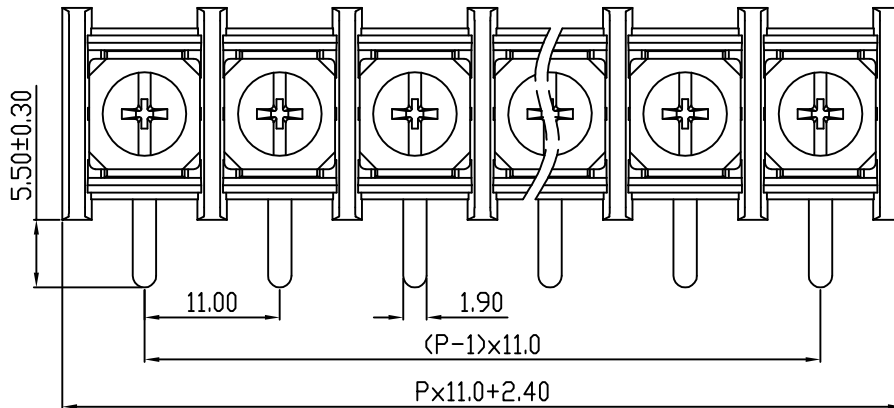


linear dimension(Tolerances Standard GB/T 14486-2008)								—	$\nabla$	$\perp$
variable range	to 6	over 6 to 10	over 10 to 30	over 30 to 60	over 60 to 100	over 100 to 160	over 160 to	to 10	over 10 to 100	over 100 to
tolerance	$\pm 0.20$	$\pm 0.30$	$\pm 0.50$	$\pm 0.70$	$\pm 1.00$	$\pm 1.30$	$\pm 1.60$	0.10	0.30	0.60



PCB LAYOUT



REVISION RECORD				
REV.	DESCRIPTION	ECN No.	APPROVED	DATE
A	新发行		CLF	21.12.02

UL/CUL 技术参数 UL/CUL Technical Data					
等级	Use Group		B	C	D
额定电压	Rated Voltage	[V]	600	-	-
额定电流	Rated Current	[A]	30	-	-
接线范围	Wire Range		18-10		
单/多芯线	Solid/Stranded	[AWG]			
IEC 技术参数 IEC Technical Data					
额定电压	Rated Voltage	[V]	750		
额定电流	Rated Current	[A]	32		
耐电压	Withstanding Voltage		3000V/1Min		
导线截面积	Conductor cross section		4.0		
硬质/柔性导线	Solid/flexible	[mm <sup>2</sup> ]			
材料 Material					
绝缘材料	Insulation Material		PA66		
阻燃等级	Imflammability		UL94V-0		
导体材料	Contacting Material		铜合金 Copper alloy		
导体表面镀层	Contactive Coating		镀锡 Tin plated		
一般参数 Other Data					
间距	Pitch	[mm]	11.0		
极数	Poles	[P]	02-24		
剥线长度	Stripping Length	[mm]	-		
螺丝	Screw/扭矩	Torque(Max) [N.m]	M4/1.2		
工作温度	Operating temperatur	[°C]	-40~+105		
引针尺寸	Pin Dimensions	[mm]	5.5		
PCB板孔径	PCB Hole Diameter	[mm]	2.3		

DES.	LQQ	DATE	21.12.02
CHK.	BY	DATE	21.12.02
APP.	CLF	DATE	21.12.02

单位/UNITS	mm	尺寸/SIZE	A4	比例/SCALE	1:1
慈溪市科发电子有限公司 CIXI KEFA ELECTRONIC CO., LTD					

第三视角/THIRD ANGLE PROJECTION		版本/REV	A
		名称/TITLE	KF65R-11.0

单击下面可查看定价，库存，交付和生命周期等信息

[>>KEFA\(科发\)](#)