

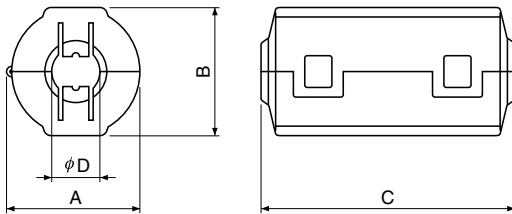
## Sample Kit Contents

Part Number	Dimensions (mm)				Weight (g)	Case Color <sup>1</sup>	Quantity
	A Maximum	B Maximum	C Maximum	$\phi D$			
ESD-SR-100	16.5	16.5	21.0	$\leq 6.0$	7.2	Black, Gray, Violet	3
ESD-SR-110	14.4	14.2	28.0	$\leq 5.0$	6.9	Black, Gray, Violet	3
ESD-SR-S10	15.5	14.0	18.5	$\leq 6.0$	4.1	Black	3
ESD-SR-120	16.0	16.4	33.0	$\leq 6.0$	13.3	Black, Gray, Violet	3
ESD-SR-150	19.6	20.3	37.4	$\leq 7.0$	23.4	Black, Gray, Violet	3
ESD-SR-160	20.2	20.0	39.0	$\leq 9.0$	22.7	Black, Gray, Violet	3
ESD-SR-250	31.5	31.6	38.0	$\leq 13.0$	59.5	Black, Gray, Violet	3
ESD-SR-S16	23.0	20.0	20.5	$\leq 8.0$	12.9	Black	3
ESD-SR-S25	33.0	29.0	15.5	$\leq 14.5$	21.3	Black	3

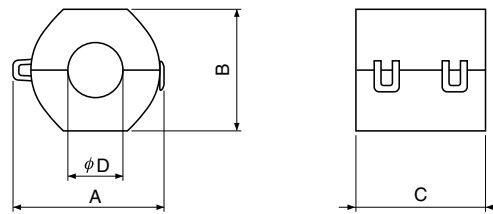
<sup>1</sup> Case color code added to end of ESD-SR part number: Blank = black, G = gray, V = violet. ESD-SR-S series only available in black.

## Dimensions – Millimeters

## ESD-SR



## ESD-SR-S



See table above for dimensions

单击下面可查看定价，库存，交付和生命周期等信息

[>>KEMET\(基美\)](#)