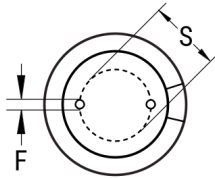


SIDE VIEW



TERMINAL END VIEW



Click [here](#) for the 3D model.

Dimensions	
D	18mm +/-0.5mm
L	36mm +2.0mm
S	7.5mm +/-0.5mm
LL Negative	15mm MIN
LL Positive	20mm MIN
F	0.8mm NOM

Packaging Specifications	
Packaging	Bulk, Bag
Packaging Quantity	500

General Information	
Series	ESE
Dielectric	Aluminum Electrolytic
Description	Single Ended, Aluminum Electrolytic
RoHS	Yes
Lead	Wire Leads
AEC-Q200	No

Specifications	
Capacitance	10,000 uF
Capacitance Tolerance	20%
Voltage DC	16 VDC, 20 VDC (Surge)
Temperature Range	-40/+105°C
Rated Temperature	105°C
Life	1000 Hrs
Dissipation Factor	18% 120Hz 20C
Ripple Current	2150 mAmps (120Hz 105C)
Leakage Current	1600 uA (2min 20°C)
Impedance Ratio at -25C	5
Impedance Ratio at -40C	6

单击下面可查看定价，库存，交付和生命周期等信息

[>>KEMET\(基美\)](#)