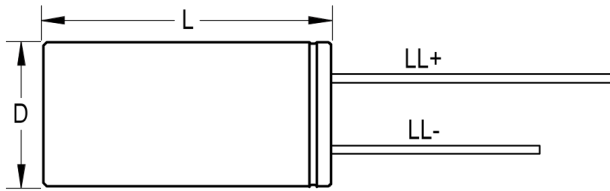
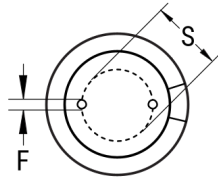


SIDE VIEW



TERMINAL END VIEW



Click [here](#) for the 3D model.

Dimensions

D	13mm +/-0.5mm
L	40mm +2.0/-0mm
S	5mm +/-0.5mm
LL Negative	15mm MIN
LL Positive	20mm MIN
F	0.6mm NOM

Packaging Specifications

Packaging	Bulk, Bag
Packaging Quantity	1000

General Information

Series	ESW
Dielectric	Aluminum Electrolytic
Description	Single Ended Aluminum Electrolytic
RoHS	Yes
Lead	Wire Leads
AEC-Q200	No

Specifications

Capacitance	1,000 uF
Capacitance Tolerance	20%
Voltage DC	50 VDC, 63 VDC (Surge)
Temperature Range	-40/+105°C
Rated Temperature	105°C
Life	6000 Hrs
Dissipation Factor	10% 120Hz 20C
Resistance	0.021 Ohms (100kHz 20C)
Ripple Current	2920 mAmps (100kHz 105C)
Leakage Current	500 uA (2min 20°C)
Impedance Ratio at -25C	2
Impedance Ratio at -40C	3

单击下面可查看定价，库存，交付和生命周期等信息

[>>KEMET\(基美\)](#)