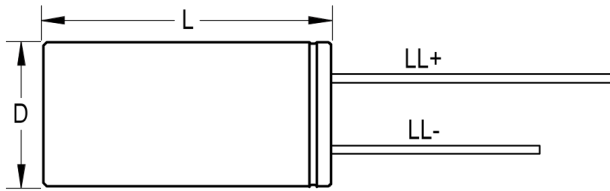
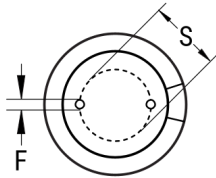


SIDE VIEW



TERMINAL END VIEW



Click [here](#) for the 3D model.

### Dimensions

D	12.5mm +/-0.5mm
L	20mm +2.0mm
S	5mm +/-0.5mm
LL Negative	15mm MIN
LL Positive	20mm MIN
F	0.6mm NOM

### Packaging Specifications

Packaging	Bulk, Bag
Packaging Quantity	2000

### General Information

Series	ESL
Dielectric	Aluminum Electrolytic
Description	Single Ended Aluminum Electrolytic
RoHS	Yes
Lead	Wire Leads
AEC-Q200	No

### Specifications

Capacitance	1,000 uF
Capacitance Tolerance	20%
Voltage DC	25 VDC, 32 VDC (Surge)
Temperature Range	-40/+105°C
Rated Temperature	105°C
Life	10000 Hrs
Dissipation Factor	14%
Resistance	0.019 Ohms (100kHz 20C)
Ripple Current	2260 mAmps (100kHz 105C)
Leakage Current	250 uA (2min 20°C)
Impedance Ratio at -40C	6

单击下面可查看定价，库存，交付和生命周期等信息

[>>KEMET\(基美\)](#)