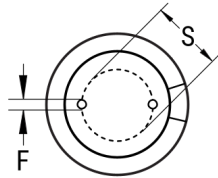


SIDE VIEW



TERMINAL END VIEW



Click [here](#) for the 3D model.

Dimensions

| | |
|-------------|----------------|
| D | 13mm +/-0.5mm |
| L | 25mm +2.0/-0mm |
| S | 5mm +/-0.5mm |
| LL Negative | 15mm MIN |
| LL Positive | 20mm MIN |
| F | 0.6mm NOM |

Packaging Specifications

| | |
|--------------------|------|
| Packaging | Ammo |
| Packaging Quantity | 500 |

General Information

| | |
|-------------|--|
| Series | ESH |
| Dielectric | Aluminum Electrolytic |
| Description | High CV Single Ended Aluminum Electrolytic |
| RoHS | Yes |
| Lead | Wire Leads |
| AEC-Q200 | No |

Specifications

| | |
|-------------------------|--------------------------|
| Capacitance | 15 uF |
| Capacitance Tolerance | 20% |
| Voltage DC | 500 VDC, 550 VDC (Surge) |
| Temperature Range | -25/+105°C |
| Rated Temperature | 105°C |
| Life | 2000 Hrs |
| Dissipation Factor | 25% 120Hz 25C |
| Ripple Current | 100 mAmps (120Hz 105C) |
| Leakage Current | 400 uA (2min 20°C) |
| Impedance Ratio at -25C | 6 |

单击下面可查看定价，库存，交付和生命周期等信息

[>>KEMET\(基美\)](#)