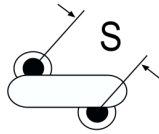
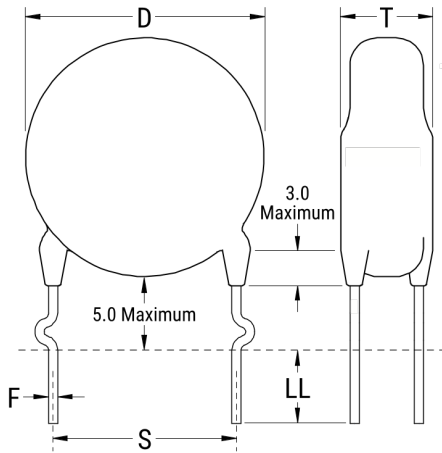


ERO610T682MTDR

Aliases (C828TD682M4400, ERO610RK4680MTDR)

ERO610 SFTY X1-440 Y2-250, Ceramic, 6800 pF, 20%, 440 VAC (X1), 250 VAC (Y2), Y5U, Lead Spacing = 10mm



The measurement position of Lead Spacing (S) and Width (V) is critical in straight lead capacitors.

General Information

Series	ERO610 SFTY X1-440 Y2-250
Style	Radial Disc
Description	Ceramic Single Layer Safety Disc Capacitors
RoHS	Yes
Termination	Tin
Qualifications	UL, CSA, CAN, ENEC, VDE
AEC-Q200	No
Notes	Please See Bulletin For Taping Information. H0 Dimension Refers to Seating Plane To Center Hole of Tape.

Specifications

Capacitance	6800 pF
Capacitance Tolerance	20%
Voltage AC	440 VAC (X1), 250 VAC (Y2)
Temperature Range	-40/+125°C
Temperature Coefficient	Y5U
Dissipation Factor	2.5%
Insulation Resistance	6 GOhms
Safety Class	X1/Y2

Click [here](#) for the 3D model.

Dimensions

D	17mm MAX
T	4.5mm MAX
S	10mm +/-0.8mm
H0	16mm +/-0.5mm
F	0.6mm +/-0.05mm
A	6mm NOM
V	1.6mm +/-0.5mm

Packaging Specifications

Packaging T&R, H0 = 16mm, Component Pitch = 25.4mm

单击下面可查看定价，库存，交付和生命周期等信息

[>>KEMET\(基美\)](#)