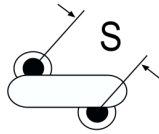
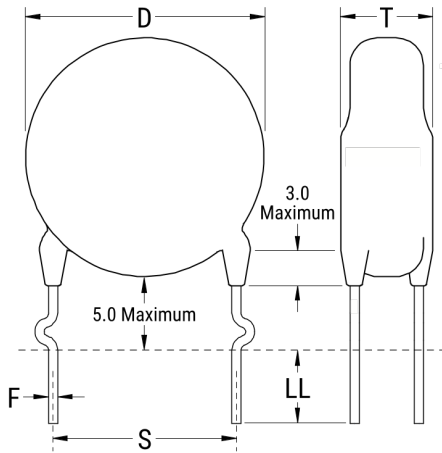


ERO610T102MTE0

Aliases (C820TE102M440X, ERO610RJ4100MTE0)

ERO610 SFTY X1-440 Y2-250, Ceramic, 1000 pF, 20%, 440 VAC (X1), 250 VAC (Y2), Y5U, Lead Spacing = 10mm



The measurement position of Lead Spacing (S) and Width (V) is critical in straight lead capacitors.

Click [here](#) for the 3D model.

General Information	
Series	ERO610 SFTY X1-440 Y2-250
Style	Radial Disc
Description	Ceramic Single Layer Safety Disc Capacitors
RoHS	Yes
Termination	Tin
Qualifications	UL, CSA, CAN, ENEC, VDE
AEC-Q200	No

Specifications	
Capacitance	1000 pF
Capacitance Tolerance	20%
Voltage AC	440 VAC (X1), 250 VAC (Y2)
Temperature Range	-40/+125°C
Temperature Coefficient	Y5U
Dissipation Factor	2.5%
Insulation Resistance	6 GOhms
Safety Class	X1/Y2

Dimensions	
D	6.5mm MAX
T	4.5mm MAX
S	10mm NOM
LL	5mm +/-1mm
F	0.6mm +/-0.05mm
A	6mm NOM
V	1.4mm +/-0.5mm

Packaging Specifications	
Packaging	Bulk, Bag

Statements of suitability for certain applications are based on our knowledge of typical operating conditions for such applications, but are not intended to constitute - and we specifically disclaim - any warranty concerning suitability for a specific customer application or use. This information is intended for use only by customers who have the requisite experience and capability to determine the correct products for their application. Any technical advice inferred from this information or otherwise provided by us with reference to the use of our products is given gratis, and we assume no obligation or liability for the advice given or results obtained.

单击下面可查看定价，库存，交付和生命周期等信息

[>>KEMET\(基美\)](#)