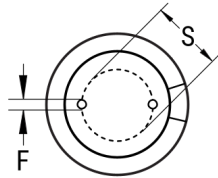


SIDE VIEW



TERMINAL END VIEW



Click [here](#) for the 3D model.

| Dimensions | |
|-------------|----------------|
| D | 18mm +/-0.5mm |
| L | 40mm +2mm |
| S | 7.5mm +/-0.5mm |
| LL Negative | 15mm MIN |
| LL Positive | 20mm MIN |
| F | 0.8mm NOM |

| Packaging Specifications | |
|--------------------------|-----------|
| Packaging | Bulk, Bag |
| Packaging Quantity | 500 |

General Information

| | |
|-------------|---|
| Series | ESW |
| Dielectric | Aluminum Electrolytic |
| Description | LowZ Single Ended Aluminum Electrolytic |
| Features | Low Z |
| RoHS | Yes |
| Lead | Wire Leads |
| AEC-Q200 | No |

Specifications

| | |
|-------------------------|--------------------------|
| Capacitance | 820 uF |
| Capacitance Tolerance | 20% |
| Voltage DC | 100 VDC, 125 VDC (Surge) |
| Temperature Range | -40/+105°C |
| Rated Temperature | 105°C |
| Life | 6000 Hrs |
| Dissipation Factor | 8% 120Hz 20C |
| Resistance | 0.036 Ohms (100kHz 20C) |
| Ripple Current | 2330 mAmps (100kHz 105C) |
| Leakage Current | 820 uA (2min 20°C) |
| Impedance Ratio at -25C | 2 |
| Impedance Ratio at -40C | 3 |

Statements of suitability for certain applications are based on our knowledge of typical operating conditions for such applications, but are not intended to constitute - and we specifically disclaim - any warranty concerning suitability for a specific customer application or use. This information is intended for use only by customers who have the requisite experience and capability to determine the correct products for their application. Any technical advice inferred from this information or otherwise provided by us with reference to the use of our products is given gratis, and we assume no obligation or liability for the advice given or results obtained.

单击下面可查看定价，库存，交付和生命周期等信息

[>>KEMET\(基美\)](#)