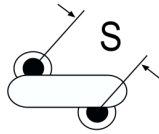
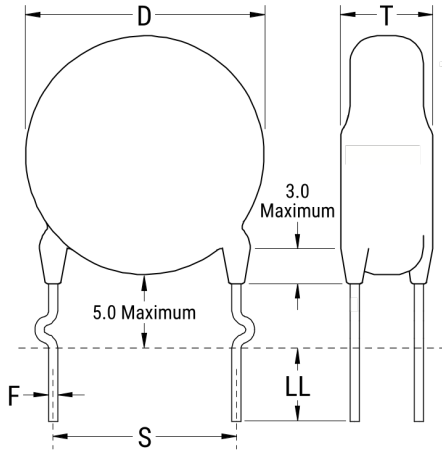


ERP610W102MTER

Aliases (C832TE102M7600, ERP610VH4100MTER)

ERP610 SFTY X1-760 Y1-500, Ceramic, 1000 pF, 20%, 760 VAC (X1), 500 VAC (Y1), Y5U, Lead Spacing = 12.5mm



The measurement position of Lead Spacing (S) and Width (V) is critical in straight lead capacitors.

Click [here](#) for the 3D model.

Dimensions	
D	9mm MAX
T	5mm MAX
S	12.5mm +/-0.8mm
H0	16mm +/-0.5mm
F	0.6mm +/-0.05mm
A	6mm NOM
V	2.1mm +/-0.5mm

Packaging Specifications	
Packaging	T&R, H0 = 16mm, Component Pitch = 25.4mm

General Information	
Series	ERP610 SFTY X1-760 Y1-500
Style	Radial Disc
Description	Ceramic Single Layer Safety Disc Capacitors
RoHS	Yes
Termination	Tin
Qualifications	UL, CSA, CAN, ENEC, VDE
AEC-Q200	No
Notes	Please See Bulletin For Taping Information. H0 Dimension Refers to Seating Plane To Center Hole of Tape.

Specifications	
Capacitance	1000 pF
Capacitance Tolerance	20%
Voltage AC	760 VAC (X1), 500 VAC (Y1)
Temperature Range	-40/+125°C
Temperature Coefficient	Y5U
Dissipation Factor	2.5%
Insulation Resistance	10 GOhms
Safety Class	X1/Y1

Statements of suitability for certain applications are based on our knowledge of typical operating conditions for such applications, but are not intended to constitute - and we specifically disclaim - any warranty concerning suitability for a specific customer application or use. This information is intended for use only by customers who have the requisite experience and capability to determine the correct products for their application. Any technical advice inferred from this information or otherwise provided by us with reference to the use of our products is given gratis, and we assume no obligation or liability for the advice given or results obtained.

单击下面可查看定价，库存，交付和生命周期等信息

[>>KEMET\(基美\)](#)