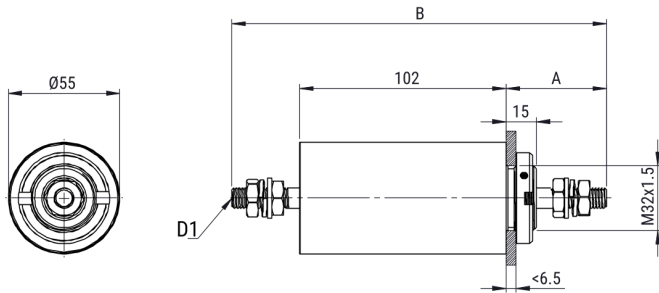


FLLDU200A026IO

KEMET, FLLDU, EMI/RFI Filters, Power, 440 VAC, 750 V, 200 A



Click [here](#) for the 3D model.

Dimensions

A	49.5mm MIN
B	185mm MIN
D1	Threaded Studs M10

Packaging Specifications

Packaging	Bulk
Packaging Quantity	1

General Information

Series	FLLDU
Style	Feed-Through Filter
Description	Power Feed-Through Filters
Features	Industrial, Medical
RoHS	Yes
Qualifications	UL

Specifications

Voltage AC	440 VAC
Voltage DC	750 VDC
Rated Frequency	50-60 Hz
Rated Current	200 A
Rated Temperature	40°C
Temperature Range	-40/+85°C
Climate Category	40/085/56

Statements of suitability for certain applications are based on our knowledge of typical operating conditions for such applications, but are not intended to constitute - and we specifically disclaim - any warranty concerning suitability for a specific customer application or use. This information is intended for use only by customers who have the requisite experience and capability to determine the correct products for their application. Any technical advice inferred from this information or otherwise provided by us with reference to the use of our products is given gratis, and we assume no obligation or liability for the advice given or results obtained.

单击下面可查看定价，库存，交付和生命周期等信息

[>>KEMET\(基美\)](#)