

NOTES: 1.INSULATOR:HIGH-TEMP THERMOPLASTIC, U94V-0  
 COLOR:BLACK  
 2.CONTACT:COPPER ALLOY GOLD FLASH AND SOLDER AREA TIN  
 PLATING:CONTACT AREA OVERALL NICKEL UNDER PLATED  
 OR GOLD FLASH

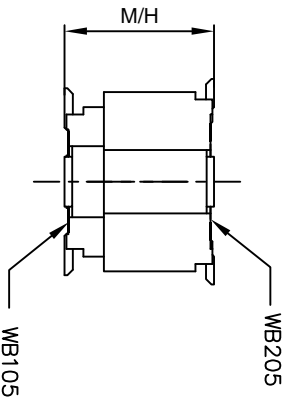
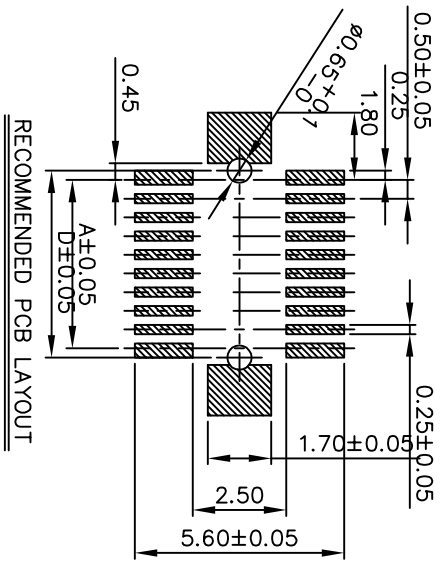
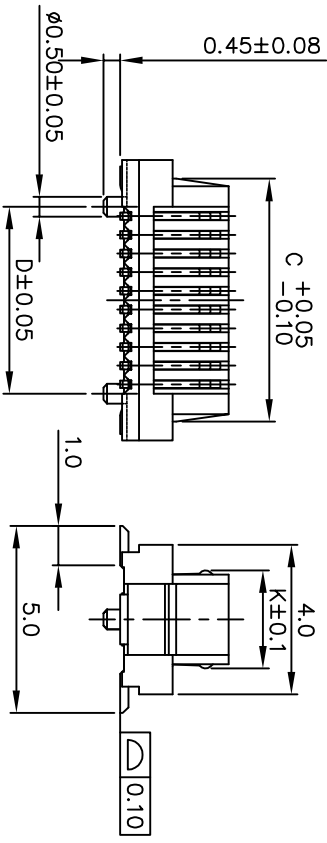
ORDER INFORMATION: WB105-X XX X-04~07A4 X

PACKING: E:TUBE  
 R:PLASTIC REEL  
 L:PAPER REEL  
 TYPE  
 E:POST AND FITTING NAIL  
 L:POST  
 F:FITTING NAIL  
 N:NO POST AND FITTING NAIL  
 PIN  
 PLATING  
 E:TIN  
 F: GOLD FLASH

WB105:0.5 BOARD TO BOARD SMT V/T TYPE MALE  
 (HALOGEN FREE)

M/H	TYPE	H	J	K	L
3.5					
4.0					
5.0					
6.0					
7.0	04~A4	1.00	3.00	2.6	1.5
8.0					
9.0					
10.0					
11.0					
12.0					
13.0					
14.0					
15.0					
16.0					
17.0					
18.0					
19.0					
20.0					
21.0					
22.0					
23.0					
24.0					
25.0					
26.0					
27.0					
28.0					
29.0					
30.0					
31.0					
32.0					
33.0					
34.0					
35.0					
36.0					
37.0					
38.0					
39.0					
40.0					
41.0					
42.0					
43.0					
44.0					
45.0					
46.0					
47.0					
48.0					
49.0					
50.0					
51.0					
52.0					
53.0					
54.0					
55.0					
56.0					
57.0					
58.0					
59.0					
60.0					
61.0					
62.0					
63.0					
64.0					
65.0					
66.0					
67.0					
68.0					
69.0					
70.0					
71.0					
72.0					
73.0					
74.0					
75.0					
76.0					
77.0					
78.0					
79.0					
80.0					

PIN NO.	A	B	C	D
10	2.0	5.0	4.0	2.5
12	2.5	5.5	4.5	3.0
14	3.0	6.0	5.0	3.5
16	3.5	6.5	5.5	4.0
18	4.0	7.0	6.0	4.5
20	4.5	7.5	6.5	5.0
22	5.0	8.0	7.0	5.5
24	5.5	8.5	7.5	6.0
26	6.0	9.0	8.0	6.5
28	6.5	9.5	8.5	7.0
30	7.0	10.0	9.0	7.5
32	7.5	10.5	9.5	8.0
34	8.0	11.0	10.0	8.5
36	8.5	11.5	10.5	9.0
38	9.0	12.0	11.0	9.5
40	9.5	12.5	11.5	10.0
42	10.0	13.0	12.0	10.5
44	10.5	13.5	12.5	11.0
46	11.0	14.0	13.0	11.5
48	11.5	14.5	13.5	12.0
50	12.0	15.0	14.0	12.5
52	12.5	15.5	14.5	13.0
54	13.0	16.0	15.0	13.5
56	13.5	16.5	15.5	14.0
58	14.0	17.0	16.0	14.5
60	14.5	17.5	16.5	15.0
62	15.0	18.0	17.0	15.5
64	15.5	18.5	17.5	16.0
66	16.0	19.0	18.0	16.5
68	16.5	19.5	18.5	17.0
70	17.0	20.0	19.0	17.5
72	17.5	20.5	19.5	18.0
74	18.0	21.0	20.0	18.5
76	18.5	21.5	20.5	19.0
78	19.0	22.0	21.0	19.5
80	19.5	22.5	21.5	20.0



深圳市金航标电子有限公司  
 www.BDS666.COM

**KH-WB105-F30E-04L**      **0755-83044319**

GENERAL TOLERANCE DRAWN  
 UNLESS OTHERWISE SPECIFIED  
 XX ±0.25  
 XXX ±0.13  
 XXXX ±0.30'  
 ANG.

DRAWN *Melny* OCT-21-2012  
 CHECKED  
 APPROVED

PART NO. WB105-XXXX-04~07.A4X  
 TITLE? 0.5 BOARD TO BOARD SMT V/T TYPE MALE  
 UNIT MM SCALE 5:1 SIZE A4 REV A

SHEET 1/1

单击下面可查看定价，库存，交付和生命周期等信息

[>>kinghelm\(金航标\)](#)