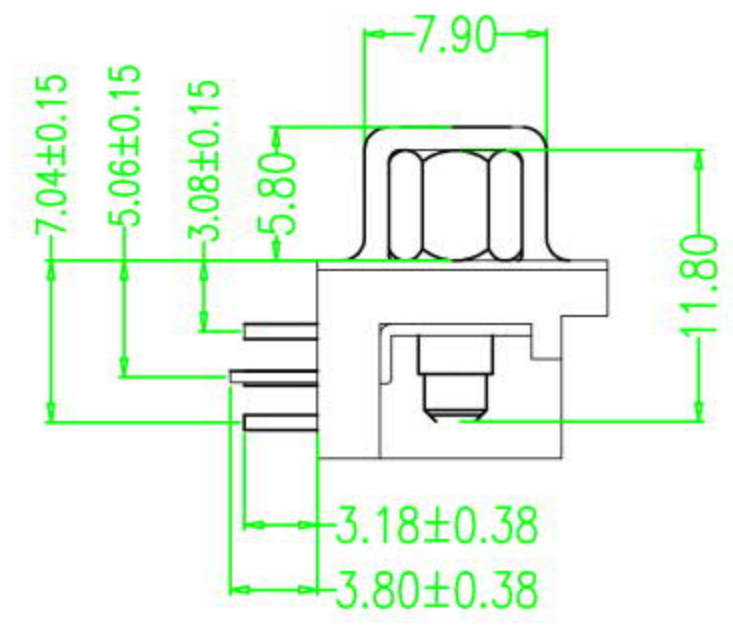
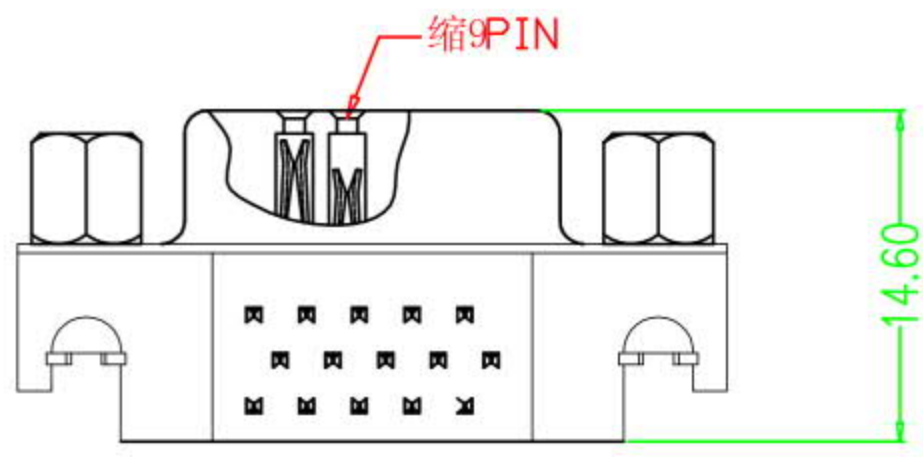
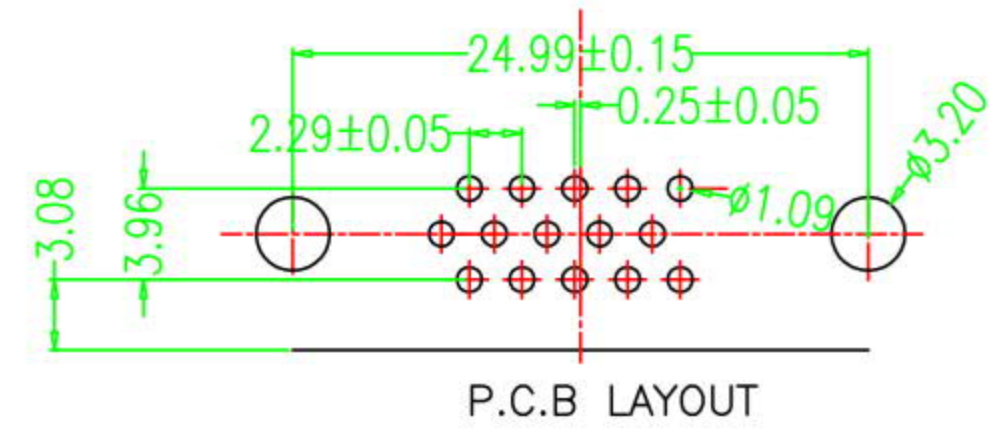
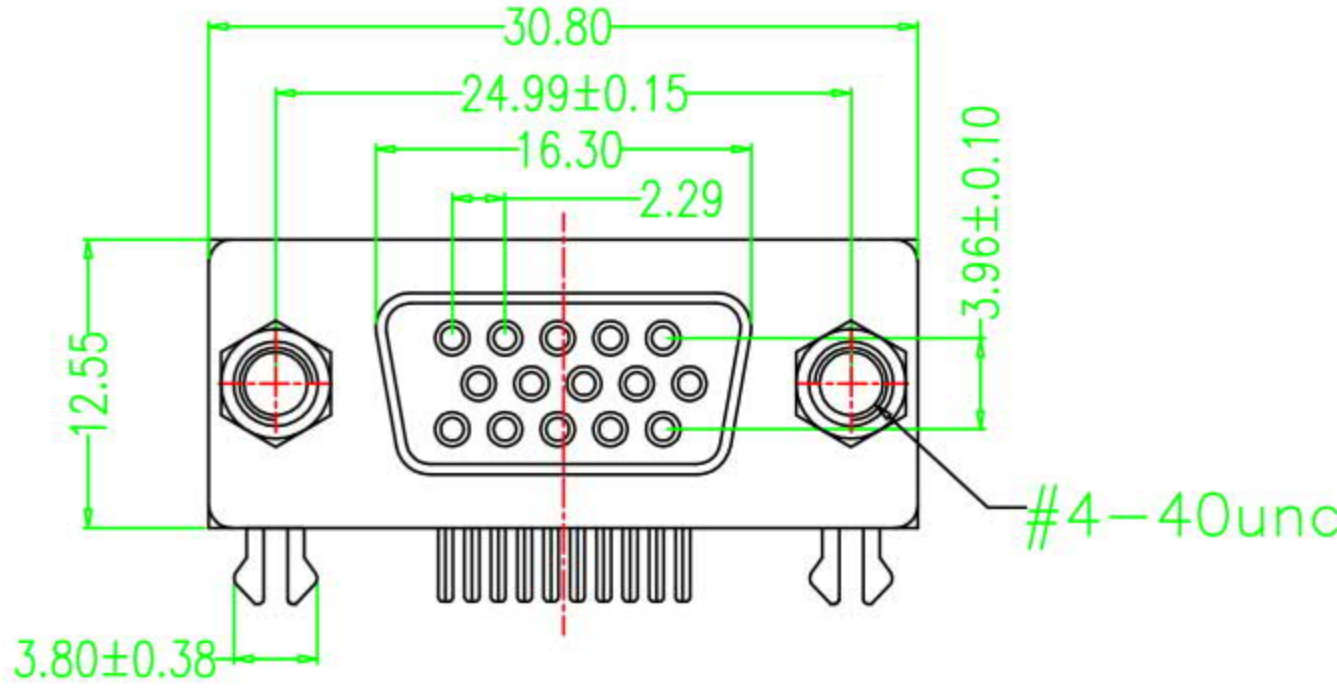


SIDE	DATE	DESCRIPTION	APPROVER
△			
△			



一. MATERIAL:

1. Insulator: PBT+30%Glass Fiber (UL94V-0)
2. Contact: Brass
3. Contact Plated: Gold Flash over Tin Or Gold Plated Or Tin Plated
4. Shell: Steel, Nickel Plated

二. SPECIFICATION:

1. Current Rating: 5 AMPS
2. Insulation Resistance: 5000M?? MIN. At 500VDC
3. Dielectric Strength: 500V for One minute
4. Operation Temperature: -55° C~+105° C.

		公差		深圳市金航标电子有限公司			
		.0±0.25	.0°±1.0°	SHENZHEN KINGHELM ELECTRONIC TECHNOLOGY CO.,LTD.			
		.00±0.20	.00°±0.5°				
		.000±0.05	.000°±0.1°				
比例 (scale)	1 : 1	日期 (date)		单位 (units)	mm	图名 (name)	HDR15P母叉锁 (3.08)
页次 (sheet)	A / 1	绘图 (draw)	伍	颜色 (shaded)		图号 (draw number)	
版次 (rev.)	A / 0	审核 (ch'k)	伍	材料 (mt'l)		料号 (Part number)	
视图 (view)		核准 (app'd)	伍	处理 (finish)	伍		

单击下面可查看定价，库存，交付和生命周期等信息

[>>kinghelm\(金航标\)](#)