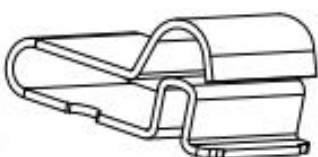
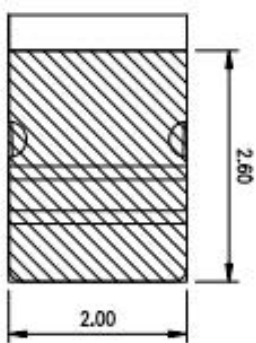
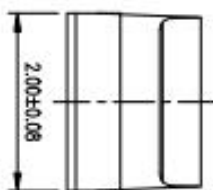
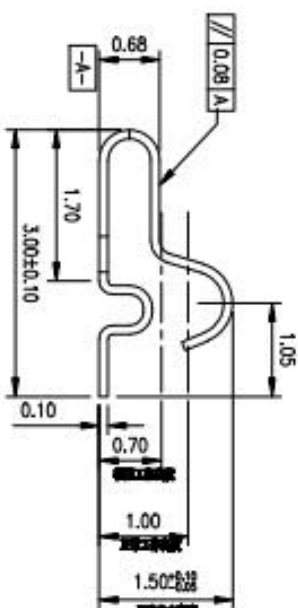
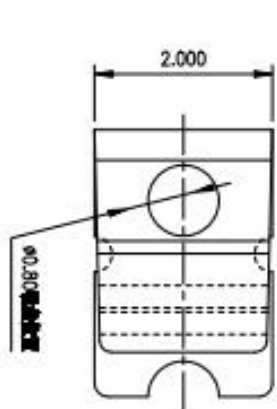


型号: KH-302015-TP

Rev.	ECN Number	Description	Date	Drawn	Checked	Approved

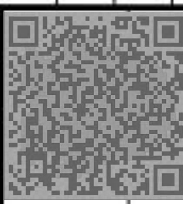
技术要求:

1. 材质: 不锈钢 SUS301, T=0.10±0.005;
2. 端子端脚焊接表面和接触面不可有毛边, 其他部位毛边最大 0.03mm;
3. 扭曲: 4.5°/1000mm, 拱形 5mm/1000mm;
4. 标示有“▼”符号的为重点控制和检测尺寸;
5. 未标注之 R MAX R0.13;
6. 电镀须满足 48 小时盐雾测试;
7. 寿命测试 > 2 万次, 产品弹力要求在 60qf ~ 80qf 之间
8. 镀层 50 80u"min, 产品外表面镀全 1U"MIN



3D图

技术详询



GENERAL TOLERANCE		SCALE: 1:1		DRAWN		DWG. NO.		REV.	
XX ±0.50	K ±12.0°	UNIT: mm	CHECK	DATE	DATE	681-00398-2	深圳市金航标电子有限公司	A	SHEET 1/1
X ±0.25	X' ±1.0°	SIZE: A4	APPROVE	DATE	DATE	FDX003982			
.XX ±0.15	.X' ±0.5°								

单击下面可查看定价，库存，交付和生命周期等信息

[>>kinghelm\(金航标\)](#)