

型号：KH-SD2829-U

REV.	DESCRIPTION	APPD	DATE
Δ1	滑块底部增加避位槽		0112/10
Δ2	主体金手指侧面增加避位		0324/10

NOTES:

1.MATERIAL:

HOUSING: HIGH TEMPERATURE THERMOPLASTIC  
UL94V\_0,COLOR:BLACK.

CONTACT: COPPER ALLOYS.

COVER: COPPER ALLOYS OR STEEL.

2.PLATING:

UNDERPLATE: NICKEL.

CONTACT AREA: GOLD OVER NICKEL.

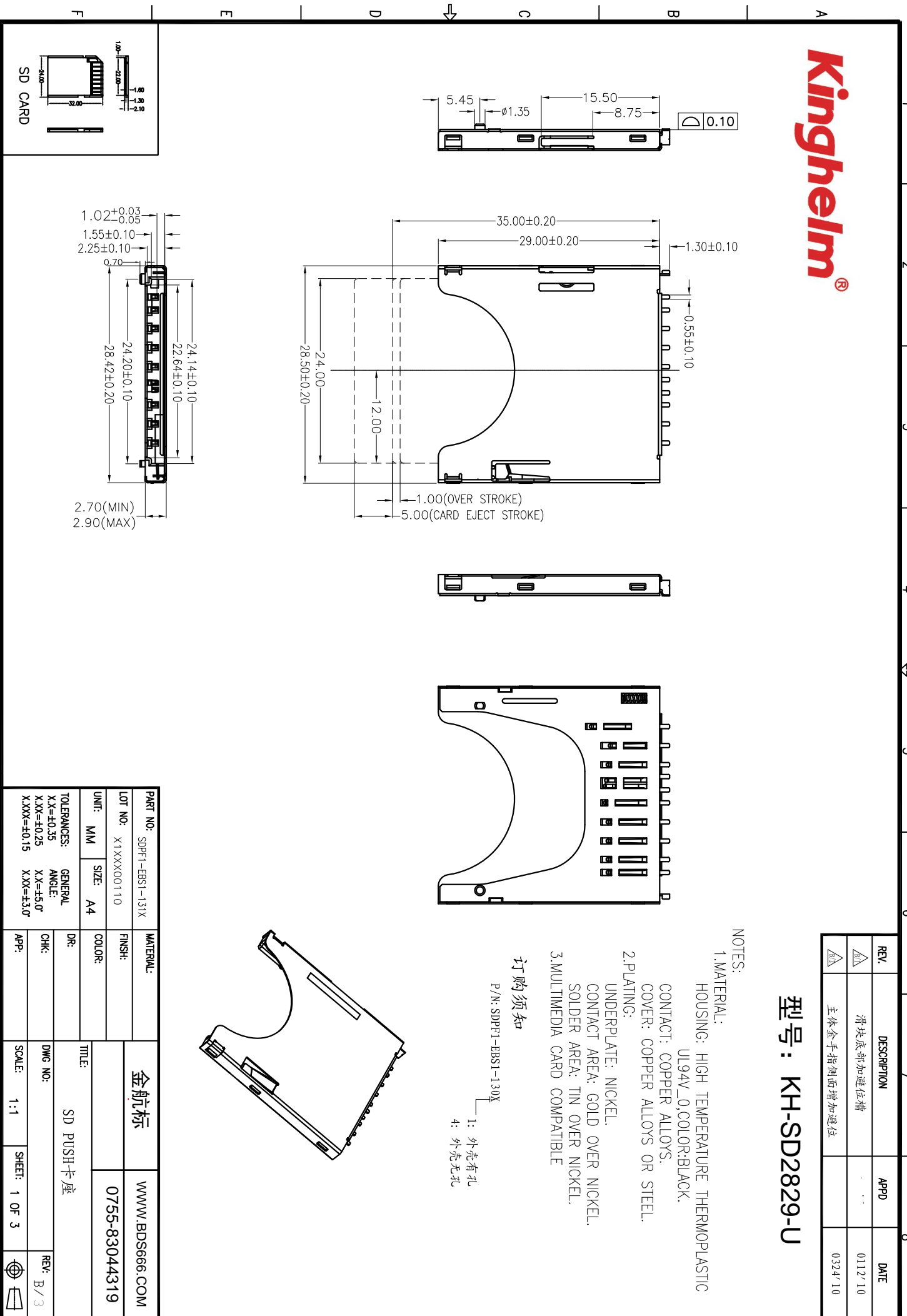
SOLDER AREA: TIN OVER NICKEL.

3.MULTIMEDIA CARD COMPATIBLE

订购须知

P/N: SDPF1-EBS1-130X

- 1: 外壳有孔
- 4: 外壳无孔



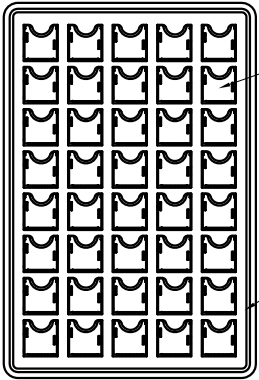
PART NO: SDPF1-EBS1-131X		MATERIAL:	
LOT NO: X1XXXX00110	FINSH:	金航标	
UNIT: MM	SIZE: A4	WWW.BDSS666.COM	
TOLERANCES:		TITLE: SD PUSH卡座	
X.X=±0.35	GENERAL ANGLE: X.X=±5.0°	DR:	DWG NO:
X.XX=±0.25	X.XX=±0.15	CHK:	SCALE: 1:1
X.XXX=±0.15		APP:	SHEET: 1 OF 3
			REV: B/3



# Kinghelm®

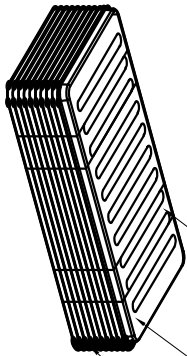
每盘40PCS

吸塑盘



吸塑盘规格: 320\*215\*10

NO. 1

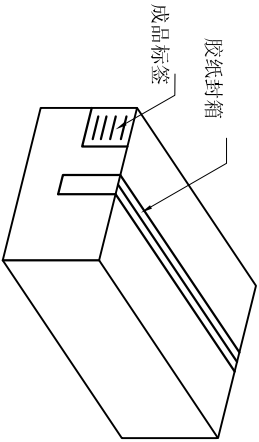
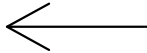


保护膜

顶盖

25层(1000PCS)

NO. 2

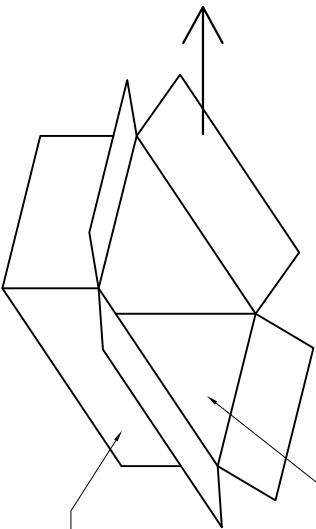


成品标签

胶纸封箱

纸箱规格: 340\*240\*150

NO. 4



每1000PCS一箱

纸箱

NO. 3

1. 材质要求:
  - 1.1 纸箱的材质为B=B; 外形尺寸为34\*24\*150M;
  - 1.2 PS盘的材质为PS, PS盘的外形尺寸为320\*215\*10MM;
2. 包装要求:
  - 2.1 每一盘装40PCS;
  - 2.2 每25盘累叠在一起, 共计1Kset; 上面需放一个空盘, 后用PE膜缠绕;
  - 2.3 把累叠好的PS盘放入纸箱中;
  - 2.4 把包装好的成品打包封箱, 并在纸箱中贴上标签;

REV.	DESCRIPTION	APPD	DATE

PART NO: SDPF1-EBS1-131X		MATERIAL:	
LOT NO: X1XX100110		FINSH:	
UNIT: MM	SIZE: A4	COLOR:	
TOLERANCES:		GENERAL	
X.X=±0.35	X.XX=±0.25	X.X=±5.0°	
X.XXX=±0.15		X.XX=±3.0°	
DR: 杨凯 09/28/09		TITLE: SD PUSH卡座	
CHK:		DWG NO: FP-090015	
APP:		SCALE: 1:1	
		SHEET: 3 OF 3	
金航标		WWW.BDS666.COM	
		0755-83044319	
		REV: B/3	

单击下面可查看定价，库存，交付和生命周期等信息

[>>kinghelm\(金航标\)](#)