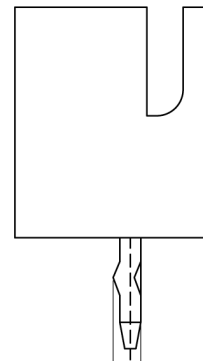
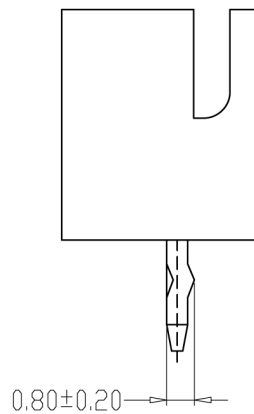
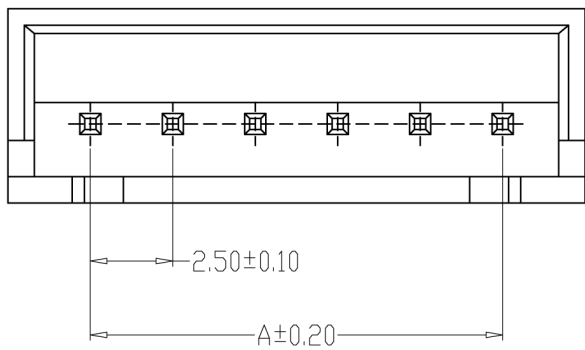


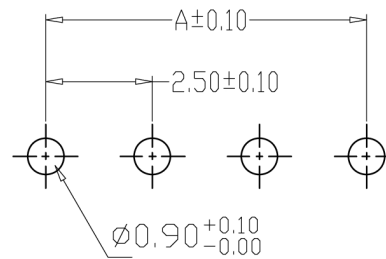
TYPE 1



TYPE 2



TYPE 3

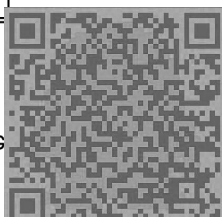


PCB LAYOUT

SPECIFICATIONS

- 1、Current Rating: 3A AC, DC
- 2、Voltage Rating: 250V AC, DC
- 3、Temperature Range: $-25^{\circ}\text{C} \sim +85^{\circ}\text{C}$
- 4、Contact Resistance: $20\text{m}\Omega$ Max
- 5、Insulation Resistance: $1000\text{M}\Omega$ Min
- 6、Withstanding Voltage: 1000V AC/minute
- 7、Material: Wafer Nylon66, UL94V-0
PIN Brass Tin-plated

编号	尺寸 (mm)	
	A	B
A2501-02A	2.50	7.50
A2501-03A	5.00	10.00
A2501-04A	7.50	12.50
A2501-05A	10.00	15.00
A2501-06A	12.50	17.50
A2501-07A	15.00	20.00
A2501-08A	17.50	22.50
A2501-09A	20.00	25.00
A2501-10A	22.50	27.50
A2501-11A	25.00	30.00
A2501-12A	27.50	32.50
A2501-20A	47.50	52.50



技术详询

制图 DRAWN	变更内容 DESCRIPTION	日期 DATE	GENERAL TOLERANCE		制图 DRAWING	钱岳生	料号 PART NO.	A2501-NA	版本 REV.	A
			$X \pm 0.25$	$X \cdot \pm 2'$	审核 CHECK	张名	品名 TITLE	TJC3直针	页次 SHEET	1/1
			$.X \pm 0.20$	$.X \cdot \pm 1'$	核准 APPROVAL	张名	客户料号 CUTM. NO.	WAFFER DIP TYPE		
			$.XX \pm 0.15$	$.XX \cdot \pm 0.5'$	单位 UNITS	2013、07、05	比例 SCALE	1:1		
			$.XXX \pm 0.10$	$.XXX \cdot \pm 0.5'$					深圳市金航标电子有限公司	

单击下面可查看定价，库存，交付和生命周期等信息

[>>kinghelm\(金航标\)](#)