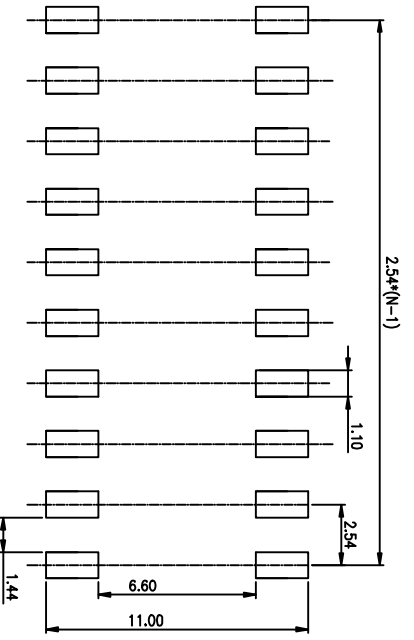
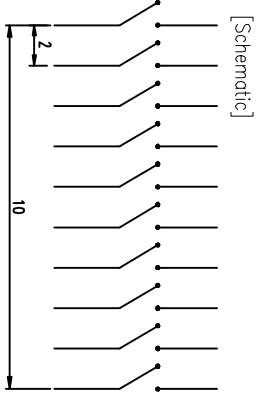
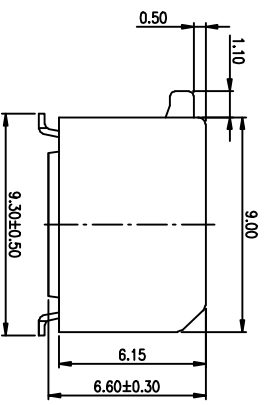
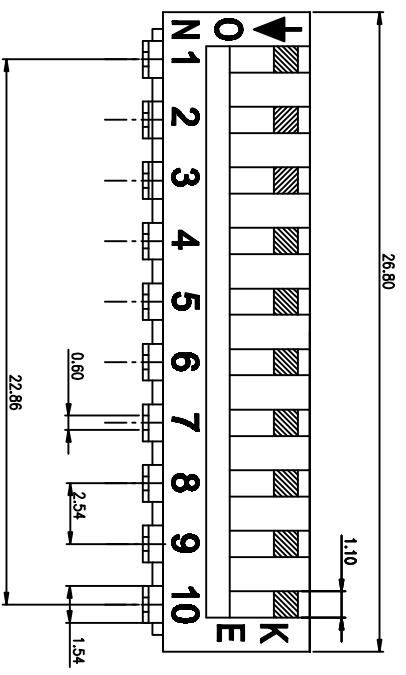


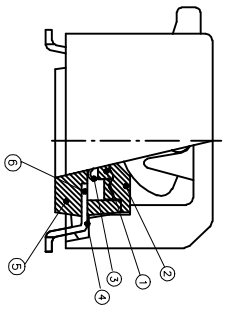
PRODUCT NO.	DSPV10LSGET
RoHS compliant	

NOTES : 1 Specification:
 1>.Operating force:10000gf Max
 2>.Operating Temperature: -40° to+85°
 3>.Storage Temperature: -40° to+85°
 4>.Mechanical Life:3000cycles minimum
 5>Electrical Life:2000cycles minimum

REV.	ECN NO.	DR	DATE



RECOMMENDED PCB LAYOUT (TOP VIEW)



- CONTACT RATING:
 1. SWITCHING: 25mA at 24VDC
 2. NON-SWITCHING: 100mA at 50VDC
 WITH 50u" NICKEL UNDERPLATINGOVERALL.
- PLATING:
 GOLD FLASH 1u"(min.) SOLDER TAIL,
 3u" GOLD PLATING ON THE CONTACT AREA,
 WITH 50u" NICKEL UNDERPLATINGOVERALL.

4. PART NUMBER DESCRIPTION :

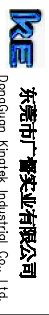
DS XX I S G E T
 [Packing: T=Tube R=Reel]
 [Finish: F=3u" Gold-plated F=10u" Gold-plated]
 [Finish: G=Full Gold S=Contact-Gold-plated]
 [Terminal: S=SMD type B=Strait:.....]
 [Actuator: T=Tape sealed S=Low profile W/O Tape L=Extension]
 [HP=Half Pitch IC=IC type PV=Plano type]

Number	Part Name	Material	Finished
①	Actuator	UL94 V0	White
②	Cover	UL94 V0	Black
③	Movable	Copper Alloy	3u" Gold
④	Terminal	Brass	1u" Gold
⑤	Base	UL94 V0	Black
⑥	Terminal Contact	Brass	3u" Gold

TOLERANCE UNLESS OTHERWISE SPECIFIED		INSPECTION	
LINER	ANGLES	COPY	PROJECTION
0 ± 0.25	0 ± 2'		
.00 ± 0.15	.0 ± 1'		
.000± 0.10	.00± 0.5'		

DESIGN	kathy	03/20/12'
DRAWING		
CHECK		
APPRO.		

FILE NO.	DSPV10LSGET-A
SIZE	UNIT SCALE SHEET REV.
A4	mm Z : 1 TOP:1 A



BY DSPV SERIES PITCH 2.54mm
 PRODUCT FAMILY DSPV SERIES
 PRAT NO. DSPV10LSGET

单击下面可查看定价，库存，交付和生命周期等信息

[>>KINGTEK\(广督\)](#)