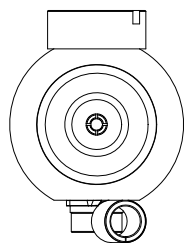
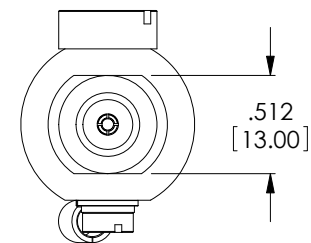
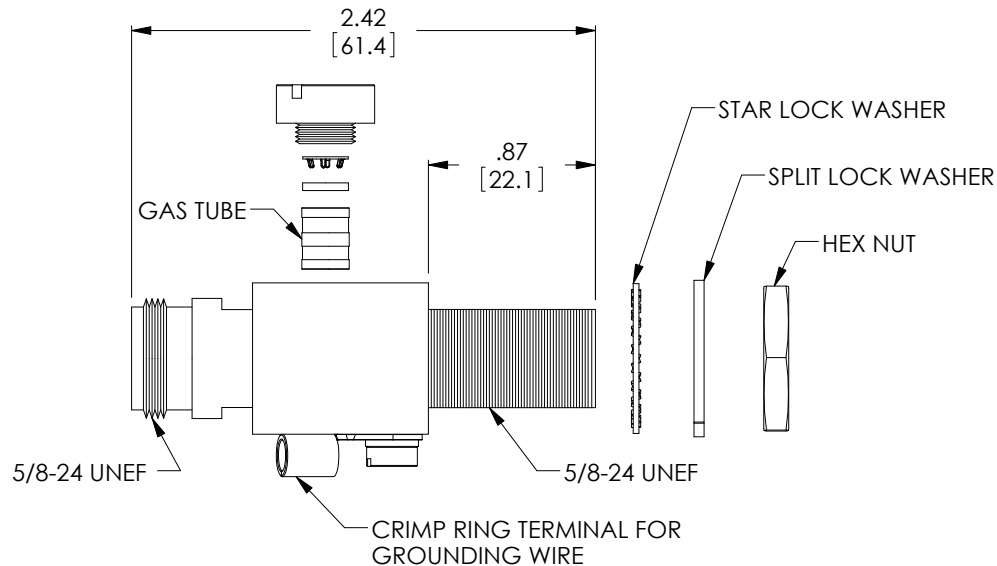


THE INFORMATION CONTAINED IN THIS DRAWING IS THE SOLE PROPERTY OF L-COM, INC. ANY REPRODUCTION IN PART OR WHOLE WITHOUT THE WRITTEN PERMISSION OF L-COM, INC. IS PROHIBITED.

REVISIONS			
REV	DESCRIPTION	DATE	APPROVED
A	INITIAL RELEASE	08/25/2010	BPUCHASKI
B	ECN 9475: REVISED GAS TUBE BREAKDOWN FROM 90V TO 180 V	10/25/2018	DFRISIELLO



N-FEMALE



N-FEMALE BULKHEAD

### ELECTRICAL SPECIFICATIONS

FREQUENCY RANGE	0 - 6 GHz
VSWR	1 : 1.2 MAX (0 - 6 GHz)
INSERTION LOSS	0.6 dB MAX (0 - 6 GHz)
IMPEDANCE	50 OHM
GAS TUBE BREAKDOWN VOLTAGE	180 V $\pm$ 20%

### MECHANICAL SPECIFICATIONS


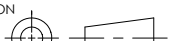
CONNECTORS	N-FEMALE TO N-FEMALE BULKHEAD
CONNECTOR BODY MATERIAL	NICKEL PLATED BRASS
BODY MATERIAL	NICKEL PLATED BRASS
PIN MATERIAL	GOLD PLATED BRASS
O"-RING	RUBBER
DIMENSIONS (MAX)	2.6 X 0.9 X 1.2 IN (68 X 23 X 31mm)
WEIGHT	0.25 LBS (0.11 kg)



### NOTES:

1. LIGHTNING PROTECTOR SHALL BE INDIVIDUALLY PACKAGED IN ACCORDANCE WITH L-COM PACKAGING SPEC. PS-0031.

**REGULATORY COMPLIANCE:**  
CE2011/65/EU(RoHS DIRECTIVE)

UNLESS OTHERWISE SPECIFIED, DIMENSIONS ARE IN INCHES [mm]  OVERALL CABLE LENGTH TOLERANCE: ≤12 [305] = +1 [25] / -0 >12 [305] ≤60 [1524] = +2 [51] / -0 >60 [1524] ≤120 [3048] = +4 [102] / -0 >120 [3048] ≤300 [7620] = +6 [152] / -0 >300 [7620] = +3% / -0%  ALL OTHER DIMENSIONAL TOLERANCES: .X = ± .2 [5.08] .XX = ± .02 [1.51] .XXX = ±.005 [1.3]	APPROVALS	DATE	 50 HIGH STREET NORTH ANDOVER, MA 01845			
	DRAWN BY D.PARHAM	08/23/2010				
	CHECKED BY K.BURGNER	08/24/2010	CATEGORY	LIGHTNING PROTECTOR		
	APPROVED BY K.BURGNER	08/25/2010	PRODUCT DESCRIPTION			
CONFIGURATION DETAILS OF UNDIMENSIONED FEATURES MAY VARY			LP,N-FEMALE TO N-FEMALE 0-6GHz			
PROJECTION 	COLOR VARIATIONS MAY OCCUR		SIZE <b>A</b>	FSCM NO. <b>43321</b>	DWG. NO. <b>AL6-NFNFBW-9</b>	REV. <b>B</b>
			SCALE: NONE			
			CAD FILE: AL6-NFNFBW-9.SLDDRW			
		SHEET 1 OF 1				

单击下面可查看定价，库存，交付和生命周期等信息

[>>L-COM\(诺通\)](#)