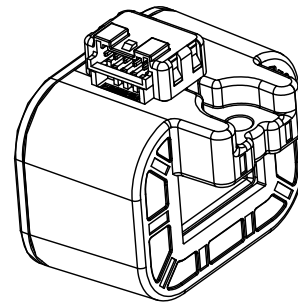


## Current Transducer HOYS-S/SP33 series

$I_{PN} = 100 \dots 560 \text{ A}$

Ref: HOYS 100-S/SP33; HOYS 200-S/SP33; HOYS 400-S/SP33;  
HOYS 500-S/SP33; HOYS 560-S/SP33

For the electronic measurement of current: DC, AC, pulsed..., with galvanic separation between the primary and the secondary circuit.



### Features

- Open loop multi-range current transducer
- Voltage output
- Overcurrent detection  $2.92 \times I_{PN}$  (peak value)
- Galvanic separation between primary and secondary circuit
- Low power consumption
- For busbar mounting
- Aperture:  $21.5 \times 13 \text{ mm}$
- Factory calibrated
- Mating JST connector:
  - housing PAP-05V-S
  - contact SPHD-00xT-P0.5.

### Special Feature

- Single power supply +3.3 V.

### Advantages

- Low offset drift
- Overdrivable  $U_{ref}$
- Creepage / clearance  $> 10.5 \text{ mm}$
- Fast response
- Low profile 2 mm pitch connector for 22 to 28 AWG wire.

### Applications

- AC variable speed and servo motor drives
- Static converters for DC motor drives
- Battery supplied applications
- Uninterruptible Power Supplies (UPS)
- Switched Mode Power Supplies (SMPS)
- Power supplies for welding applications
- Combiner box
- Solar inverter on DC side of the inverter (MPPT).

### Standards

- IEC 61800-2: 2015
- IEC 61800-3: 2004
- IEC 61800-5-1: 2007
- IEC 62109-1: 2010
- UL 508: 2013.

### Application Domain

- Industrial.

## Safety



Caution

If the device is used in a way that is not specified by the manufacturer, the protection provided by the device may be compromised. Always inspect the electronics unit and connecting cable before using this product and do not use it if damaged. Mounting assembly shall guarantee the maximum primary conductor temperature, fulfill clearance and creepage distance, minimize electric and magnetic coupling, and unless otherwise specified can be mounted in any orientation.



Caution, risk of electrical shock

This transducer must be used in limited-energy secondary circuits SELV according to IEC 61010-1, in electric/electronic equipment with respect to applicable standards and safety requirements in accordance with the manufacturer's operating specifications.

Use caution during installation and use of this product; certain parts of the module can carry hazardous voltages and high currents (e.g. power supply, primary conductor).

Ignoring this warning can lead to injury and or/or cause serious damage.

De-energize all circuits and hazardous live parts before installing the product.

All installations, maintenance, servicing operations and use must be carried out by trained and qualified personnel practicing applicable safety precautions.

This transducer is a build-in device, whose hazardous live parts must be inaccessible after installation.

This transducer must be mounted in a suitable end-enclosure.

Besides make sure to have a distance of minimum 30 mm between the primary terminals of the transducer and other neighboring components.

Main supply must be able to be disconnected.

Always inspect the flexible probe for damage before using this product.

Never connect or disconnect the external power supply while the primary circuit is connected to live parts.

Never connect the output to any equipment with a common mode voltage to earth greater than 30 V.

Always wear protective clothing and gloves if hazardous live parts are present in the installation where the measurement is carried out.

This transducer is a built-in device, not intended to be cleaned with any product. Nevertheless if the user must implement cleaning or washing process, validation of the cleaning program has to be done by himself.

When defining soldering process, please use no cleaning process only.



ESD susceptibility

The product is susceptible to be damaged from an ESD event and the personnel should be grounded when handling it.

Do not dispose of this product as unsorted municipal waste. Contact a qualified recycler for disposal.



Underwriters Laboratory Inc. recognized component

**Absolute maximum ratings**

Parameter	Symbol	Unit	Value
Maximum supply voltage (not destructive)	$U_{C\ max}$	V	8
Maximum supply voltage (not entering non standard modes)	$U_{C\ max}$	V	6.5
Maximum primary conductor temperature	$T_{B\ max}$	°C	120
Electrostatic discharge voltage (HBM - Human Body Model)	$U_{ESD\ HBM}$	kV	2

Stresses above these ratings may cause permanent damage. Exposure to absolute maximum ratings for extended periods may degrade reliability.

**UL 508: Ratings and assumptions of certification**

File # E189713 Volume: 2 Section: 5

**Standards**

- CSA C22.2 NO. 14-10 INDUSTRIAL CONTROL EQUIPMENT - Edition 12
- UL 508 STANDARD FOR INDUSTRIAL CONTROL EQUIPMENT - Edition 17

**Ratings**

Parameter	Symbol	Unit	Value
Primary involved potential		V AC/DC	600
Ambient operating temperature	$T_A$	°C	105
Primary current	$I_P$	A	According to series primary current
Secondary supply voltage	$U_C$	V DC	5
Output voltage	$U_{out}$	V	0 to 5

**Conditions of acceptability**

- 1 - These devices have been evaluated for overvoltage category III and for use in pollution degree 2 environment.
- 2 - A suitable enclosure shall be provided in the end-use application.
- 3 - The terminals have not been evaluated for field wiring.
- 5 - Primary terminals shall not be straightened since assembly of housing case depends upon bending of the terminals.
- 6 - Any surface of polymeric housing have not been evaluated as insulating barrier.
- 7 - Low voltage control circuit shall be supplied by an isolating source (such as a transformer, optical isolator, limiting impedance or electro-mechanical relay).

**Marking**

Only those products bearing the UR Mark should be considered to be Listed or Recognized and covered under UL's Follow-Up Service. Always look for the Mark on the product.

**Insulation coordination**

Parameter	Symbol	Unit	Value	Comment
RMS voltage for AC insulation test, 50/60 Hz, 1 min	$U_d$	kV	5.4	
Impulse withstand voltage 1.2/50 $\mu$ s	$U_{Ni}$	kV	9.6	
Partial discharge RMS test voltage ( $q_m < 10$ pC)	$U_t$	V	1650	Busbar/secondary. According to: IEC 61800-5-1 IEC 62109-1
Clearance (pri. - sec.)	$d_{Cl}$	mm	> 10.5	Shortest distance through air
Creepage distance (pri. - sec.)	$d_{Cp}$	mm	> 10.5	Shortest path along device body
Case material	-	-	V0	According to UL 94
Comparative tracking index	$CTI$		600	
Application example	-	V	600	Reinforced insulation according to IEC 61800-5-1, CAT III PD2
Application example	-	V	1000	Basic insulation, non uniform field according to IEC 61800-5-1, CAT III PD2
Application example	-	V	600	According to UL 508, CAT III PD2

**Environmental and mechanical characteristics**

Parameter	Symbol	Unit	Min	Typ	Max	Comment
Ambient operating temperature	$T_A$	°C	-40		105	
Ambient storage temperature	$T_{A\text{st}}$	°C	-40		105	
Mass	$m$	g		101		

At  $T_A = 25^\circ\text{C}$ ,  $U_C = +3.3\text{ V}$ ,  $R_L = 10\text{ k}\Omega$  unless otherwise noted (see Min, Max, typ. definition paragraph in page 14).

Parameter	Symbol	Unit	Min	Typ	Max	Comment
Primary nominal RMS current	$I_{PN}$	A		100		
Primary current, measuring range	$I_{PM}$	A	-250		250	
Number of primary turns	$N_P$	-		1		Bus bar
Supply voltage	$U_C$	V	3.14	3.3	3.46	
Current consumption	$I_C$	mA		19	25	
Reference voltage (output)	$U_{ref}$	V	1.63	1.65	1.67	Internal reference
External reference voltage (input)	$U_{Eref}$	V	0.5		1.7	
Output voltage range @ $I_{PM}$	$U_{out} - U_{ref}$	V	-1.15		1.15	Over operating temperature range
Internal series resistance of reference voltage source	$R_{ref}$	$\Omega$	130	200	300	Series
Output internal resistance	$R_{out}$	$\Omega$		2	5	Series
Load capacitance	$C_L$	nF	0		6	
OCD output on resistance	$R_{onOCD}$	$\Omega$	70	95	150	Open drain, active low Over operating temperature range
OCD output hold time	$t_{holdOCD}$	ms	0.7	1	1.4	Additional time after threshold has released
EEPROM control	$U_{out}$	mV	0		50	$U_{out}$ forced to GND when EEPROM in an error state <sup>1)</sup>
Electrical offset voltage @ $I_p = 0\text{ A}$	$U_{OE}$	mV	-5		5	$U_{out} - U_{ref}$ @ $U_{ref} = 1.65\text{ V}$
Electrical offset current referred to primary	$I_{OE}$	A	-1.09		1.09	
Temperature coefficient of $U_{ref}$	$TCU_{ref}$	ppm/K	-170		170	-40 °C ... 105 °C
Temperature coefficient of $U_{OE}$ referred to primary	$TCU_{OE}$	mV/K	-0.075		0.075	-40 °C ... 105 °C
Temperature coefficient of $I_{OE}$ referred to primary @ $I_p = 0\text{ A}$	$TCI_{OE}$	mA/K	-16.3		16.3	-40 °C ... 105 °C
Nominal sensitivity	$S_N$	mV/A		4.6		460 mV @ $I_{PN}$
Sensitivity error @ $I_{PN}$	$\epsilon_S$	%	-0.5		0.5	Factory adjustment
Temperature coefficient of $S$	$TCS$	ppm/K	-250		250	-40 °C ... 105 °C
Linearity error 0 ... $I_{PN}$	$\epsilon_L$	% of $I_{PN}$	-0.75		0.75	
Linearity error 0 ... $I_{PM}$	$\epsilon_L$	% of $I_{PM}$	-0.5		0.5	
Magnetic offset current (@ $10 \times I_{PN}$ ) referred to primary	$I_{OM}$	A	-1.27		1.27	One turn
Delay time to 10 % of the final output value for $I_{PN}$ step	$t_{D10}$	$\mu\text{s}$		3	3.5	@ 100 A/ $\mu\text{s}$
Delay time to 90 % of the final output value for $I_{PN}$ step	$t_{D90}$	$\mu\text{s}$		3	3.5	@ 100 A/ $\mu\text{s}$
Frequency bandwidth (-3 dB)	$BW$	kHz		180		Small signal
Noise voltage spectral density 100 Hz ... 100 kHz	$u_{no}$	$\mu\text{V}/\sqrt{\text{Hz}}$		7		
RMS noise voltage (DC ... 10 kHz) (DC ... 100 kHz) (DC ... 1 MHz)	$U_{no}$	mVpp		4.4 7.2 11.5		
Primary current, detection threshold	$I_{PTh}$	A	$2.63 \times I_{PN}$	$2.92 \times I_{PN}$	$3.21 \times I_{PN}$	Peak value $\pm 10\%$ , overcurrent detection OCD
Sum of sensitivity and linearity error @ $I_{PN}$	$\epsilon_{SL}$	% of $I_{PN}$	-1.25		1.25	
Sum of sensitivity and linearity error at 85 °C @ $I_{PN}$	$\epsilon_{SL85}$	% of $I_{PN}$	-3.73		3.73	
Sum of sensitivity and linearity error at 105 °C @ $I_{PN}$	$\epsilon_{SL105}$	% of $I_{PN}$	-4.55		4.55	See formula note <sup>2)</sup>

**Notes:** <sup>1)</sup> EEPROM in an error state makes the transducer behave like a reverse current saturation. Use of the OCD may help to differentiate the two cases

$$\supset \text{Sum of sensitivity and linearity error @ } T_A \text{ (} \% \text{ of } I_{PN}\text{)} = \epsilon_{SL} + \left( \frac{TCS}{10000} \times (T_A - 25) \right) + \frac{TCI_{OE}}{1000 \times I_{PN}} \times 100 \times (T_A - 25).$$

**Electrical data HOYS 200-S/SP33**
**HOYS 100 ... 560-S/SP33 series**

 At  $T_A = 25^\circ\text{C}$ ,  $U_C = +3.3\text{V}$ ,  $R_L = 10\text{k}\Omega$  unless otherwise noted (see Min, Max, typ. definition paragraph in page 14).

Parameter	Symbol	Unit	Min	Typ	Max	Comment
Primary nominal RMS current	$I_{PN}$	A		200		
Primary current, measuring range	$I_{PM}$	A	-500		500	
Number of primary turns	$N_P$	-		1		Bus bar
Supply voltage	$U_C$	V	3.14	3.3	3.46	
Current consumption	$I_C$	mA		19	25	
Reference voltage (output)	$U_{ref}$	V	1.63	1.65	1.67	Internal reference
External reference voltage (input)	$U_{Eref}$	V	0.5		1.7	
Output voltage range @ $I_{PM}$	$U_{out} - U_{ref}$	V	-1.15		1.15	Over operating temperature range
Internal series resistance of reference voltage source	$R_{ref}$	$\Omega$	130	200	300	Series
Output internal resistance	$R_{out}$	$\Omega$		2	5	Series
Load capacitance	$C_L$	nF	0		6	
OCD output on resistance	$R_{onOCD}$	$\Omega$	70	95	150	Open drain, active low Over operating temperature range
OCD output hold time	$t_{holdOCD}$	ms	0.7	1	1.4	Additional time after threshold has released
EEPROM control	$U_{out}$	mV	0		50	$U_{out}$ forced to GND when EEPROM in an error state <sup>1)</sup>
Electrical offset voltage @ $I_p = 0\text{A}$	$U_{OE}$	mV	-5		5	$U_{out} - U_{ref} @ U_{ref} = 1.65\text{V}$
Electrical offset current referred to primary	$I_{OE}$	A	-2.17		2.17	
Temperature coefficient of $U_{ref}$	$TCU_{ref}$	ppm/K	-170		170	-40 °C ... 105 °C
Temperature coefficient of $U_{OE}$ referred to primary	$TCU_{OE}$	mV/K	-0.075		0.075	-40 °C ... 105 °C
Temperature coefficient of $I_{OE}$ referred to primary @ $I_p = 0\text{A}$	$TCI_{OE}$	mA/K	-32.61		32.61	-40 °C ... 105 °C
Nominal sensitivity	$S_N$	mV/A		2.3		460 mV @ $I_{PN}$
Sensitivity error @ $I_{PN}$	$\epsilon_S$	%	-0.5		0.5	Factory adjustment
Temperature coefficient of $S$	$TCS$	ppm/K	-250		250	-40 °C ... 105 °C
Linearity error 0 ... $I_{PN}$	$\epsilon_L$	% of $I_{PN}$	-0.75		0.75	
Linearity error 0 ... $I_{PM}$	$\epsilon_L$	% of $I_{PM}$	-0.5		0.5	
Magnetic offset current (@ $10 \times I_{PN}$ ) referred to primary	$I_{OM}$	A	-1.27		1.27	One turn
Delay time to 10 % of the final output value for $I_{PN}$ step	$t_{D10}$	$\mu\text{s}$		3	3.5	@ 100 A/ $\mu\text{s}$
Delay time to 90 % of the final output value for $I_{PN}$ step	$t_{D90}$	$\mu\text{s}$		3	3.5	@ 100 A/ $\mu\text{s}$
Frequency bandwidth (-3 dB)	$BW$	kHz		180		Small signal
Noise voltage spectral density 100 Hz ... 100 kHz	$u_{no}$	$\mu\text{V}/\sqrt{\text{Hz}}$		5.9		
RMS noise voltage (DC ... 10 kHz) (DC ... 100 kHz) (DC ... 1 MHz)	$U_{no}$	mVpp		4.3 6.2 9.2		
Primary current, detection threshold	$I_{PTh}$	A	$2.63 \times I_{PN}$	$2.92 \times I_{PN}$	$3.21 \times I_{PN}$	Peak value $\pm 10\%$ , overcurrent detection OCD
Sum of sensitivity and linearity error @ $I_{PN}$	$\epsilon_{SL}$	% of $I_{PN}$	-1.25		1.25	
Sum of sensitivity and linearity error at $85^\circ\text{C}$ @ $I_{PN}$	$\epsilon_{SL85}$	% of $I_{PN}$	-3.73		3.73	
Sum of sensitivity and linearity error at $105^\circ\text{C}$ @ $I_{PN}$	$\epsilon_{SL105}$	% of $I_{PN}$	-4.55		4.55	See formula note <sup>2)</sup>

**Notes:** <sup>1)</sup> EEPROM in an error state makes the transducer behave like a reverse current saturation. Use of the OCD may help to differentiate the two cases

$$\text{Sum of sensitivity and linearity error @ } T_A \text{ (} \% \text{ of } I_{PN}\text{)} = \epsilon_{SL} + \left( \frac{TCS}{10000} \times (T_A - 25) + \frac{TCI_{OE}}{1000 \times I_{PN}} \times 100 \times (T_A - 25) \right).$$

**Electrical data HOYS 400-S/SP33**
**HOYS 100 ... 560-S/SP33 series**

 At  $T_A = 25^\circ\text{C}$ ,  $U_C = +3.3\text{V}$ ,  $R_L = 10\text{k}\Omega$  unless otherwise noted (see Min, Max, typ. definition paragraph in page 14).

Parameter	Symbol	Unit	Min	Typ	Max	Comment
Primary nominal RMS current	$I_{PN}$	A		400		
Primary current, measuring range	$I_{PM}$	A	-1000		1000	
Number of primary turns	$N_P$	-		1		Bus bar
Supply voltage	$U_C$	V	3.14	3.3	3.46	
Current consumption	$I_C$	mA		19	25	
Reference voltage (output)	$U_{ref}$	V	1.63	1.65	1.67	Internal reference
External reference voltage (input)	$U_{Eref}$	V	0.5		1.7	
Output voltage range @ $I_{PM}$	$U_{out} - U_{ref}$	V	-1.15		1.15	Over operating temperature range
Internal series resistance of reference voltage source	$R_{ref}$	$\Omega$	130	200	300	Series
Output internal resistance	$R_{out}$	$\Omega$		2	5	Series
Load capacitance	$C_L$	nF	0		6	
OCD output on resistance	$R_{onOCD}$	$\Omega$	70	95	150	Open drain, active low Over operating temperature range
OCD output hold time	$t_{holdOCD}$	ms	0.7	1	1.4	Additional time after threshold has released
EEPROM control	$U_{out}$	mV	0		50	$U_{out}$ forced to GND when EEPROM in an error state <sup>1)</sup>
Electrical offset voltage @ $I_p = 0\text{A}$	$U_{OE}$	mV	-5		5	$U_{out} - U_{ref} @ U_{ref} = 1.65\text{V}$
Electrical offset current referred to primary	$I_{OE}$	A	-4.35		4.35	
Temperature coefficient of $U_{ref}$	$TCU_{ref}$	ppm/K	-170		170	-40 °C ... 105 °C
Temperature coefficient of $U_{OE}$ referred to primary	$TCU_{OE}$	mV/K	-0.075		0.075	-40 °C ... 105 °C
Temperature coefficient of $I_{OE}$ referred to primary @ $I_p = 0\text{A}$	$TCI_{OE}$	mA/K	-65.22		65.22	-40 °C ... 105 °C
Nominal sensitivity	$S_N$	mV/A		1.15		460 mV @ $I_{PN}$
Sensitivity error @ $I_{PN}$	$\epsilon_S$	%	-0.5		0.5	Factory adjustment
Temperature coefficient of $S$	$TCS$	ppm/K	-250		250	-40 °C ... 105 °C
Linearity error 0 ... $I_{PN}$	$\epsilon_L$	% of $I_{PN}$	-0.5		0.5	
Linearity error 0 ... $I_{PM}$	$\epsilon_L$	% of $I_{PM}$	-0.5		0.5	
Magnetic offset current (@ $10 \times I_{PN}$ ) referred to primary	$I_{OM}$	A	-1.27		1.27	One turn
Delay time to 10 % of the final output value for $I_{PN}$ step	$t_{D10}$	$\mu\text{s}$		3	3.5	@ 100 A/ $\mu\text{s}$
Delay time to 90 % of the final output value for $I_{PN}$ step	$t_{D90}$	$\mu\text{s}$		3	3.5	@ 100 A/ $\mu\text{s}$
Frequency bandwidth (-3 dB)	$BW$	kHz		180		Small signal
Noise voltage spectral density 100 Hz ... 100 kHz	$u_{no}$	$\mu\text{V}/\sqrt{\text{Hz}}$		5.4		
RMS noise voltage (DC ... 10 kHz) (DC ... 100 kHz) (DC ... 1 MHz)	$U_{no}$	mVpp		4.2 5.7 8.1		
Primary current, detection threshold	$I_{PTh}$	A	$2.63 \times I_{PN}$	$2.92 \times I_{PN}$	$3.21 \times I_{PN}$	Peak value $\pm 10\%$ , overcurrent detection OCD
Sum of sensitivity and linearity error @ $I_{PN}$	$\epsilon_{SL}$	% of $I_{PN}$	-1		1	
Sum of sensitivity and linearity error at 85 °C @ $I_{PN}$	$\epsilon_{SL85}$	% of $I_{PN}$	-3.48		3.48	See formula note <sup>2)</sup>
Sum of sensitivity and linearity error at 105 °C @ $I_{PN}$	$\epsilon_{SL105}$	% of $I_{PN}$	-4.3		4.3	

**Notes:** <sup>1)</sup> EEPROM in an error state makes the transducer behave like a reverse current saturation. Use of the OCD may help to differentiate the two cases

$$\text{Sum of sensitivity and linearity error @ } T_A \text{ (% of } I_{PN}) = \epsilon_{SL} + \left( \frac{TCS}{10000} \times (T_A - 25) \right) + \frac{TCI_{OE}}{1000 \times I_{PN}} \times 100 \times (T_A - 25).$$

**Electrical data HOYS 500-S/SP33**
**HOYS 100 ... 560-S/SP33 series**

 At  $T_A = 25\text{ °C}$ ,  $U_C = +3.3\text{ V}$ ,  $R_L = 10\text{ k}\Omega$  unless otherwise noted (see Min, Max, typ. definition paragraph in page 14).

Parameter	Symbol	Unit	Min	Typ	Max	Comment
Primary nominal RMS current	$I_{PN}$	A		500		
Primary current, measuring range	$I_{PM}$	A	-1250		1250	
Number of primary turns	$N_P$	-		1		Bus bar
Supply voltage	$U_C$	V	3.14	3.3	3.46	
Current consumption	$I_C$	mA		19	25	
Reference voltage (output)	$U_{ref}$	V	1.63	1.65	1.67	Internal reference
External reference voltage (input)	$U_{Eref}$	V	0.5		1.7	
Output voltage range @ $I_{PM}$	$U_{out} - U_{ref}$	V	-1.15		1.15	Over operating temperature range
Internal series resistance of reference voltage source	$R_{ref}$	$\Omega$	130	200	300	Series
Output internal resistance	$R_{out}$	$\Omega$		2	5	Series
Load capacitance	$C_L$	nF	0		6	
OCD output on resistance	$R_{onOCD}$	$\Omega$	70	95	150	Open drain, active low Over operating temperature range
OCD output hold time	$t_{holdOCD}$	ms	0.7	1	1.4	Additional time after threshold has released
EEPROM control	$U_{out}$	mV	0		50	$U_{out}$ forced to GND when EEPROM in an error state <sup>1)</sup>
Electrical offset voltage @ $I_P = 0\text{ A}$	$U_{OE}$	mV	-5		5	$U_{out} - U_{ref} @ U_{ref} = 1.65\text{ V}$
Electrical offset current referred to primary	$I_{OE}$	A	-5.43		5.43	
Temperature coefficient of $U_{ref}$	$TCU_{ref}$	ppm/K	-170		170	-40 °C ... 105 °C
Temperature coefficient of $U_{OE}$ referred to primary	$TCU_{OE}$	mV/K	-0.075		0.075	-40 °C ... 105 °C
Temperature coefficient of $I_{OE}$ referred to primary @ $I_P = 0\text{ A}$	$TCI_{OE}$	mA/K	-81.52		81.52	-40 °C ... 105 °C
Nominal sensitivity	$S_N$	mV/A		0.92		460 mV @ $I_{PN}$
Sensitivity error @ $I_{PN}$	$\epsilon_S$	%	-0.5		0.5	Factory adjustment
Temperature coefficient of $S$	$TCS$	ppm/K	-250		250	-40 °C ... 105 °C
Linearity error 0 ... $I_{PN}$	$\epsilon_L$	% of $I_{PN}$	-0.5		0.5	
Linearity error 0 ... $I_{PM}$	$\epsilon_L$	% of $I_{PM}$	-0.5		0.5	
Magnetic offset current (@ $10 \times I_{PN}$ ) referred to primary	$I_{OM}$	A	-1.27		1.27	One turn
Delay time to 90 % of the final output value for $I_{PN}$ step	$t_{D10}$	$\mu\text{s}$		3	3.5	@ 100 A/ $\mu\text{s}$
Delay time to 90 % of the final output value for $I_{PM}$ step	$t_{D90}$	$\mu\text{s}$		3	3.5	@ 100 A/ $\mu\text{s}$
Frequency bandwidth (-3 dB)	$BW$	kHz		180		Small signal
Noise voltage spectral density 100 Hz ... 100 kHz	$u_{no}$	$\mu\text{V}/\sqrt{\text{Hz}}$		5.3		
RMS noise voltage (DC ... 10 kHz) (DC ... 100 kHz) (DC ... 1 MHz)	$U_{no}$	mVpp		4.2 5.6 7.8		
Primary current, detection threshold	$I_{PTh}$	A	$2.63 \times I_{PN}$	$2.92 \times I_{PN}$	$3.21 \times I_{PN}$	Peak value $\pm 10\%$ , overcurrent detection OCD
Sum of sensitivity and linearity error @ $I_{PN}$	$\epsilon_{SL}$	% of $I_{PN}$	-1		1	
Sum of sensitivity and linearity error at 85 °C @ $I_{PN}$	$\epsilon_{SL85}$	% of $I_{PN}$	-3.48		3.48	See formula note <sup>2)</sup>
Sum of sensitivity and linearity error at 105 °C @ $I_{PN}$	$\epsilon_{SL105}$	% of $I_{PN}$	-4.3		4.3	

**Notes:** <sup>1)</sup> EEPROM in an error state makes the transducer behave like a reverse current saturation. Use of the OCD may help to differentiate the two cases

$$\text{Sum of sensitivity and linearity error @ } T_A \text{ (\% of } I_{PN}) = \epsilon_{SL} + \left( \frac{TCS}{10000} \times (T_A - 25) \right) + \frac{TCI_{OE}}{1000 \times I_{PN}} \times 100 \times (T_A - 25).$$



**Electrical data HOYS 560-S/SP33**
**HOYS 100 ... 560-S/SP33 series**

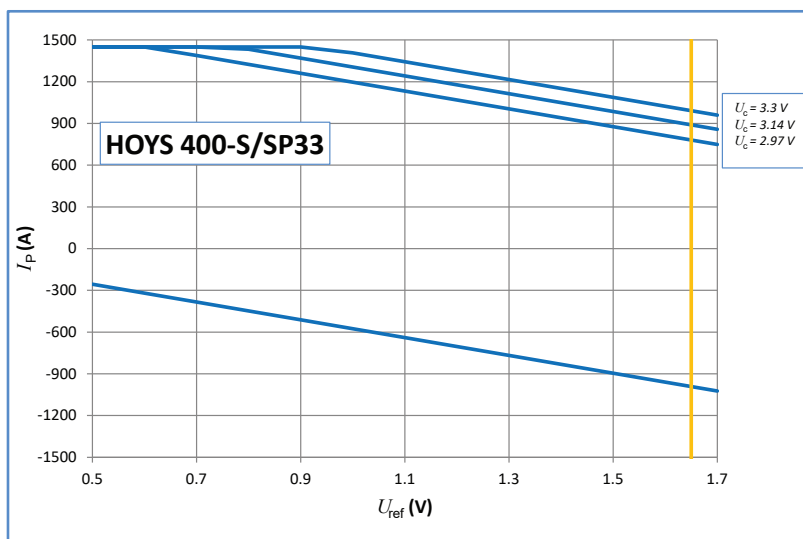
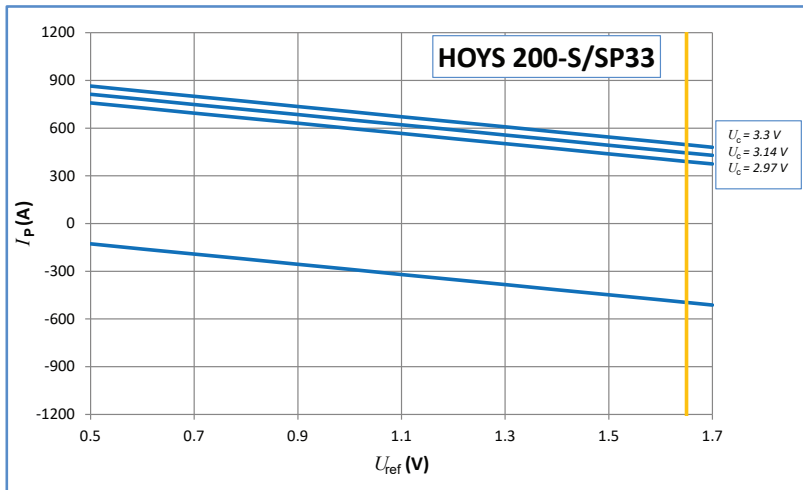
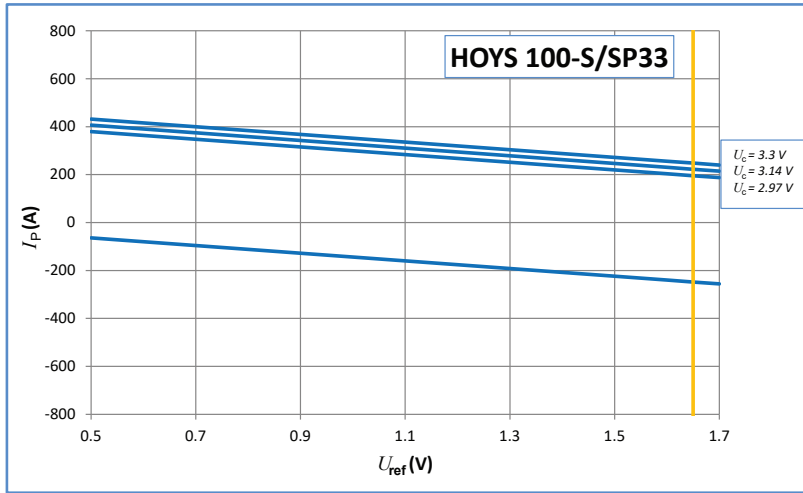
 At  $T_A = 25\text{ °C}$ ,  $U_C = +3.3\text{ V}$ ,  $R_L = 10\text{ k}\Omega$  unless otherwise noted (see Min, Max, typ. definition paragraph in page 14).

Parameter	Symbol	Unit	Min	Typ	Max	Comment
Primary nominal RMS current	$I_{PN}$	A		560		
Primary current, measuring range	$I_{PM}$	A	-1400		1400	
Number of primary turns	$N_P$	-		1		Bus bar
Supply voltage	$U_C$	V	3.14	3.3	3.46	
Current consumption	$I_C$	mA		19	25	
Reference voltage (output)	$U_{ref}$	V	1.63	1.65	1.67	Internal reference
External reference voltage (input)	$U_{Eref}$	V	0.5		1.7	
Output voltage range @ $I_{PM}$	$U_{out} - U_{ref}$	V	-1.15		1.15	Over operating temperature range
Internal series resistance of reference voltage source	$R_{ref}$	$\Omega$	130	200	300	Series
Output internal resistance	$R_{out}$	$\Omega$		2	5	Series
Load capacitance	$C_L$	nF	0		6	
OCD output on resistance	$R_{onOCD}$	$\Omega$	70	95	150	Open drain, active low Over operating temperature range
OCD output hold time	$t_{holdOCD}$	ms	0.7	1	1.4	Additional time after threshold has released
EEPROM control	$U_{out}$	mV	0		50	$U_{out}$ forced to GND when EEPROM in an error state <sup>1)</sup>
Electrical offset voltage @ $I_P = 0\text{ A}$	$U_{OE}$	mV	-5		5	$U_{out} - U_{ref} @ U_{ref} = 1.65\text{ V}$
Electrical offset current referred to primary	$I_{OE}$	A	-6.09		6.09	
Temperature coefficient of $U_{ref}$	$TCU_{ref}$	ppm/K	-170		170	-40 °C ... 105 °C
Temperature coefficient of $U_{OE}$ referred to primary	$TCU_{OE}$	mV/K	-0.075		0.075	-40 °C ... 105 °C
Temperature coefficient of $I_{OE}$ referred to primary @ $I_P = 0\text{ A}$	$TCI_{OE}$	mA/K	-91.35		91.35	-40 °C ... 105 °C
Nominal sensitivity	$S_N$	mV/A		0.821		460 mV @ $I_{PN}$
Sensitivity error @ $I_{PN}$	$\epsilon_S$	%	-0.5		0.5	Factory adjustment
Temperature coefficient of $S$	$TCS$	ppm/K	-250		250	-40 °C ... 105 °C
Linearity error 0 ... $I_{PN}$	$\epsilon_L$	% of $I_{PN}$	-0.5		0.5	
Linearity error 0 ... $I_{PM}$	$\epsilon_L$	% of $I_{PM}$	-0.5		0.5	
Magnetic offset current (@ $10 \times I_{PN}$ ) referred to primary	$I_{OM}$	A	-1.27		1.27	One turn
Delay time to 90 % of the final output value for $I_{PN}$ step	$t_{D10}$	$\mu\text{s}$		3	3.5	@ 100 A/ $\mu\text{s}$
Delay time to 90 % of the final output value for $I_{PM}$ step	$t_{D90}$	$\mu\text{s}$		3	3.5	@ 100 A/ $\mu\text{s}$
Frequency bandwidth (-3 dB)	$BW$	kHz		180		Small signal
Noise voltage spectral density 100 Hz ... 100 kHz	$u_{no}$	$\mu\text{V}/\sqrt{\text{Hz}}$		5.2		
RMS noise voltage (DC ... 10 kHz) (DC ... 100 kHz) (DC ... 1 MHz)	$U_{no}$	mVpp		4.2 5.5 7.7		
Primary current, detection threshold	$I_{PTh}$	A	$2.64 \times I_{PN}$	$2.93 \times I_{PN}$	$3.22 \times I_{PN}$	Peak value $\pm 10\%$ , overcurrent detection OCD
Sum of sensitivity and linearity error @ $I_{PN}$	$\epsilon_{SL}$	% of $I_{PN}$	-1		1	
Sum of sensitivity and linearity error at 85 °C @ $I_{PN}$	$\epsilon_{SL85}$	% of $I_{PN}$	-3.48		3.48	
Sum of sensitivity and linearity error at 105 °C @ $I_{PN}$	$\epsilon_{SL105}$	% of $I_{PN}$	-4.3		4.3	See formula note <sup>2)</sup>

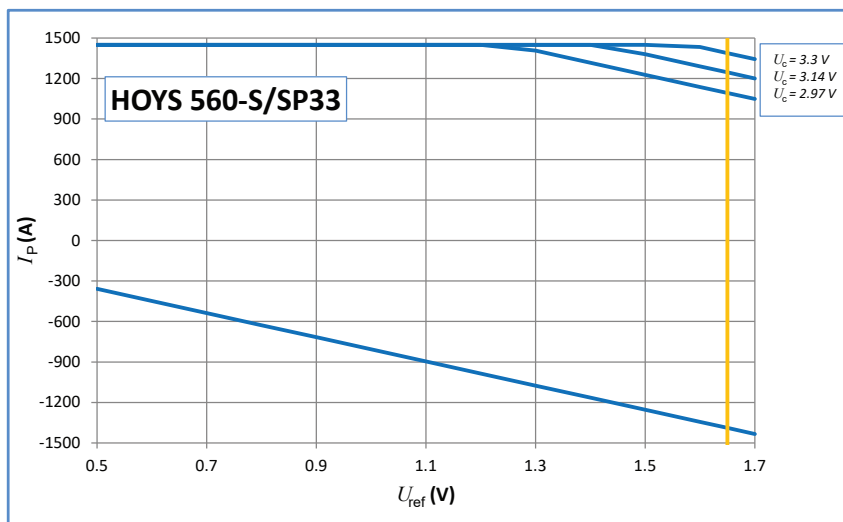
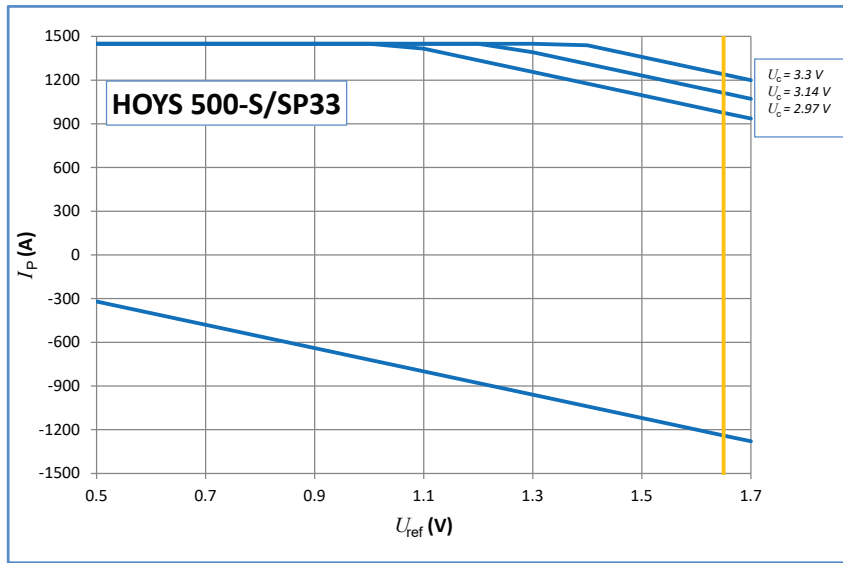
Notes: <sup>1)</sup> EEPROM in an error state makes the transducer behave like a reverse current saturation. Use of the OCD may help to differentiate the two cases

$$\text{Sum of sensitivity and linearity error @ } T_A \text{ (\% of } I_{PN}) = \epsilon_{SL} + \left( \frac{TCS}{10000} \times (T_A - 25) + \frac{TCI_{OE}}{1000 \times I_{PN}} \times 100 \times (T_A - 25) \right)$$

Measuring range versus external reference voltage

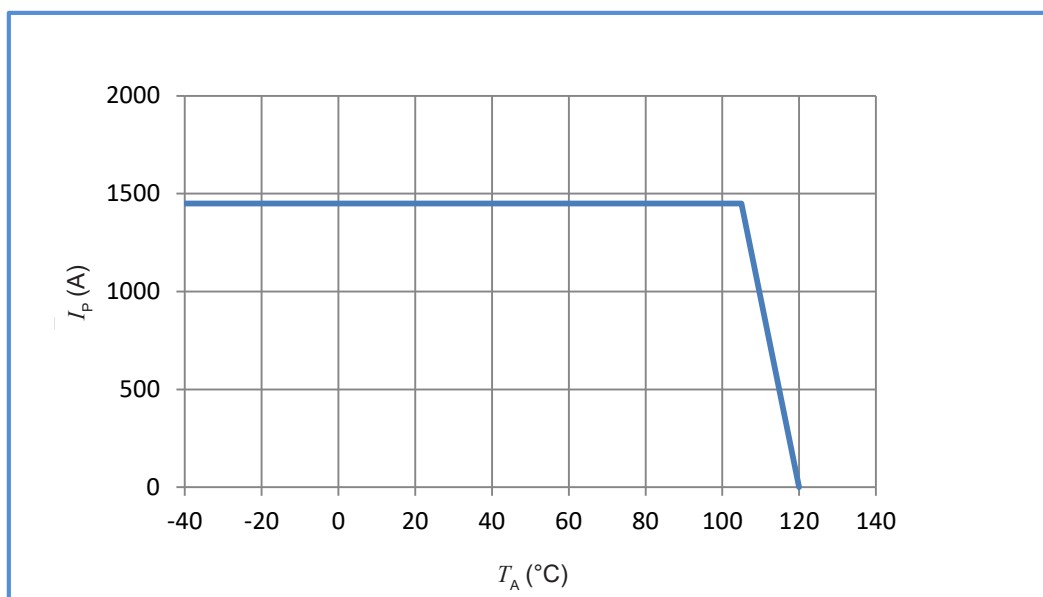


Measuring range versus external reference voltage



**Maximum continuous DC current**

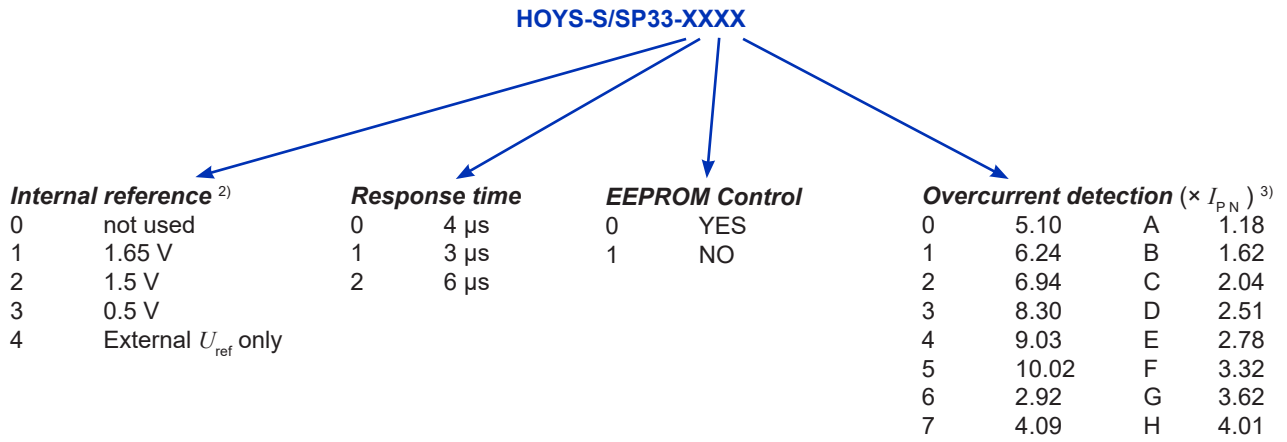
For all ranges:



**Important notice:** whatever the usage and/or application, the transducer primary bar / jumper temperature shall not go above the maximum rating of 120 °C as stated in page 3 of this datasheet.

## HOYS-S series: name and codification

HOYS-S family products may be ordered **on request**<sup>1)</sup> with a dedicated setting of the parameters as described below (standard products are delivered with the setting 1106 according to the table).



**Notes:** <sup>1)</sup> For dedicated settings, minimum quantities apply, please contact your local LEM support

<sup>2)</sup>  $U_{ref}$  electrical data

$U_{ref}$ parameter	$U_{ref}$ (V)			$TCU_{ref}$ (ppm/K)	
	min	typ	max	min	max
0	-	-	-	-	-
1	1.63	1.65	1.67	-170	170
2	1.48	1.5	1.52	-170	170
3	0.49	0.5	0.51	-250	250

<sup>3)</sup> OCD ( $\times I_{PN}$ ) correction table versus range and temperature.  
All other values or empty cells: no change

HOYS-S/SP33-110x					
OCD Parameter					
	100	200	400	500	560
A					
B					
C					
D					
E					
6					
F					
G					
H					4.09
7					4.33
0				6.59	-
1			7.79	-	-
2			10.4	-	-
3			-	-	-
4			-	-	-
5			-	-	-

Tolerance on OCD value	
$\pm 20$ %	
$\pm 15$ %	
$\pm 10$ %	No change
-	Do not use

## Application information

HOYS-S/SP33 series is designed to be used with a bus-bar or cable <sup>1)</sup> to carry the current through the aperture with a maximum cross-section of 21.5 × 13 mm.

**Note:** <sup>1)</sup> The maximum magnetic offset referred to primary is inversely proportional to the number of turns, thus is divided by 2 with 2 turns.

## Definition of typical, minimum and maximum values

Minimum and maximum values for specified limiting and safety conditions have to be understood as such as well as values shown in “typical” graphs.

On the other hand, measured values are part of a statistical distribution that can be specified by an interval with upper and lower limits and a probability for measured values to lie within this interval.

Unless otherwise stated (e.g. “100 % tested”), the LEM definition for such intervals designated with “min” and “max” is that the probability for values of samples to lie in this interval is 99.73 %.

For a normal (Gaussian) distribution, this corresponds to an interval between -3 sigma and +3 sigma. If “typical” values are not obviously mean or average values, those values are defined to delimit intervals with a probability of 68.27 %, corresponding to an interval between -sigma and +sigma for a normal distribution.

Typical, minimum and maximum values are determined during the initial characterization of the product.

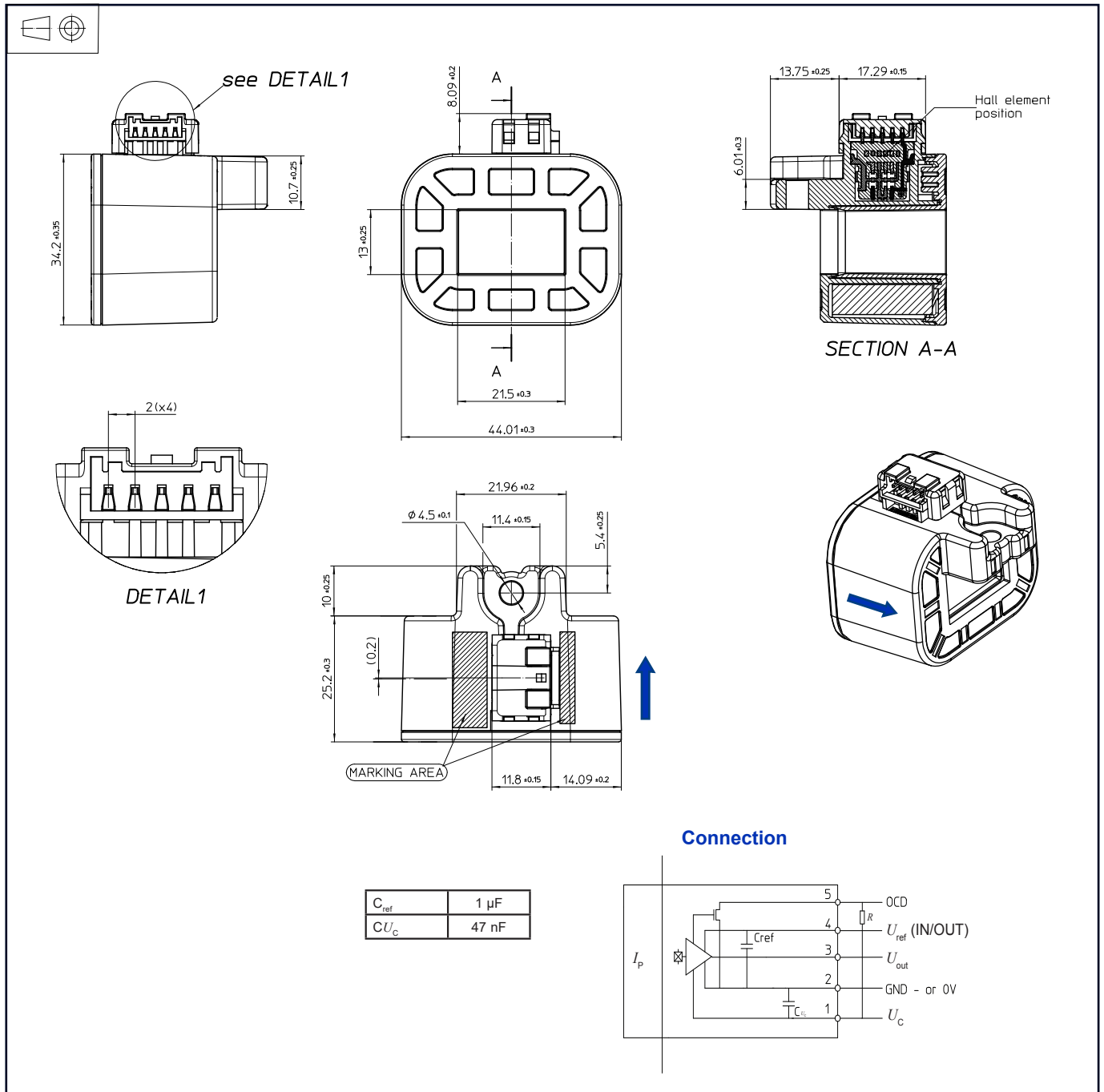
## Remark

Installation of the transducer must be done unless otherwise specified on the datasheet, according to LEM Transducer Generic Mounting Rules. Please refer to LEM document N°ANE120504 available on our Web site: <https://www.lem.com/en/file/3137/download/>.

## Insulation distance (nominal values):

	$d_{cp}$	$d_{cl}$
Between primary busbar and secondary pins	20.7 mm	20.7 mm
Between primary busbar and core	16.9 mm	-
Between core and secondary terminal	11.9 mm	11.9 mm

Dimensions (mm, general linear tolerance  $\pm 0.3$  mm)



Remarks:

- $U_{out}$  is positive with respect to  $U_{ref}$  when positive  $I_p$  flows in direction of the arrow shown on the drawing above.
  - Connection system equivalent to JST B05B-PASK
  - Transducer fastening
    - 1 hole  $\varnothing$  4.5 mm
    - 1 steel screw M4
- Recommended fastening torque      4 N·m

单击下面可查看定价，库存，交付和生命周期等信息

[>>LEM\(莱姆\)](#)