



**Photocoupler**  
**Product Data Sheet**  
LTV-5314-TP1

Spec No. :DS70-2022-0017  
Effective Date: 02/23/2022  
Revision: -

**LITE-ON DCC**

**RELEASE**

**BNS-OD-FC001/A4**

## Photocoupler LTV-5314 series

### 1.5 Amp Output Current IGBT Gate Drive Photocoupler with Rail-to-Rail Output Voltage in Stretched LSO5

#### Description

The LTV-5314 series Photocoupler is ideally suited for driving power IGBTs and MOSFETs used in motor control inverter applications and inverters in power supply system. It contains an AlGaAs LED optically coupled to an integrated circuit with a power output stage. The Photocoupler operational parameters are guaranteed over the temperature range from -40°C ~ +110°C.

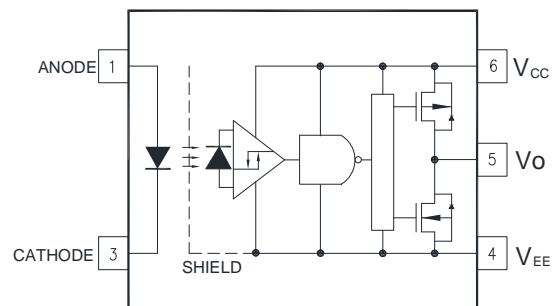
#### 1.1 Features

- 1.5 A maximum peak output current
- 1.0 A minimum peak output current
- Rail-to-rail output voltage
- 150 ns maximum propagation delay
- 100 ns maximum propagation delay difference
- Under Voltage Lock-Out protection (UVLO) with hysteresis
- 35 kV/us minimum Common Mode Rejection (CMR) at  $V_{CM} = 1000\text{ V}$
- Wide operating range: 10 to 30 Volts ( $V_{CC}$ )
- Guaranteed performance over temperature -40°C ~ +110°C.
- Safety approval:
  - UL1577
  - IEC/EN/DIN EN 60747-5-5
  - HALOGEN FREE

#### 1.2 Applications

- IGBT/MOSFET gate drive
- Uninterruptible power supply (UPS)
- Industrial Inverter
- AC/Brushless DC motor drives
- Switching power suppliers

#### Functional Diagram



#### Truth Table

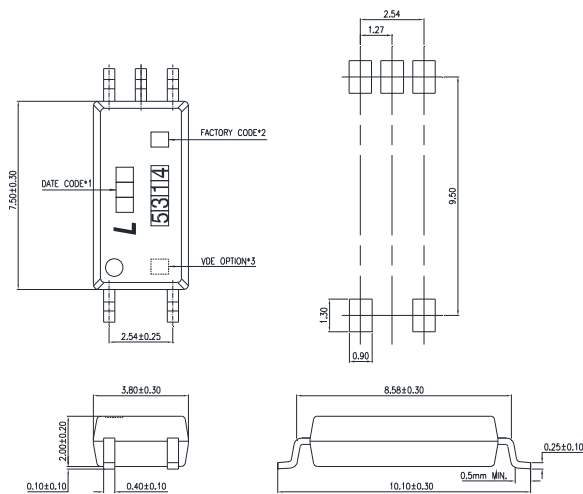
LED	High side	Low side	$V_o$
OFF	OFF	ON	Low
ON	ON	OFF	High

Note: A 0.1 $\mu$ F bypass capacitor must be connected between Pin 4 and 6.

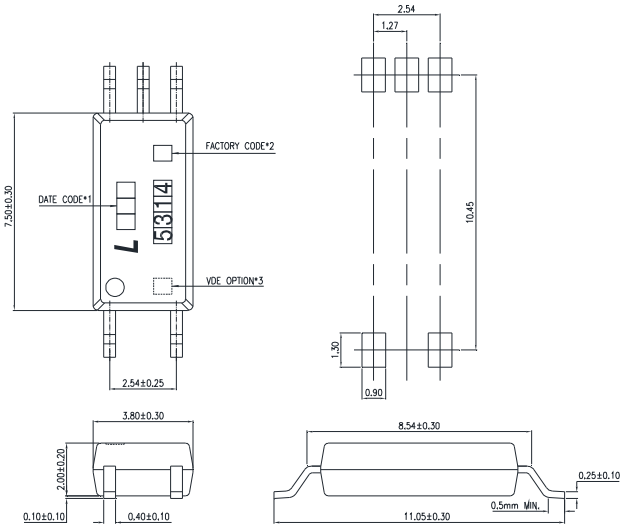
## Photocoupler LTV-5314 series

### 2. PACKAGE DIMENSIONS

#### 2.1 LTV-5314



#### 2.2 LTV-5314W



#### Notes :

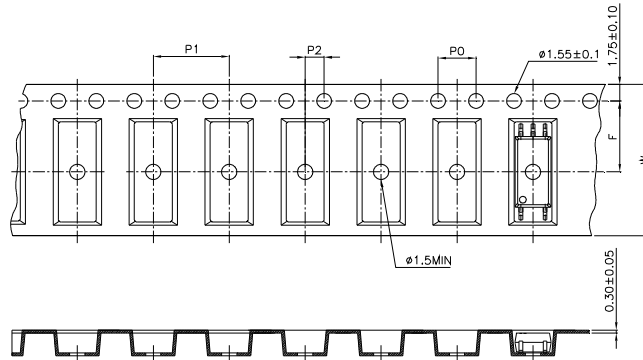
1. Year date code.
2. 2-digit work week.
3. Factory identification mark (X : Tianjin).
4. "4" or "V" for VDE option.

\* Dimensions are in Millimeters and (Inches).

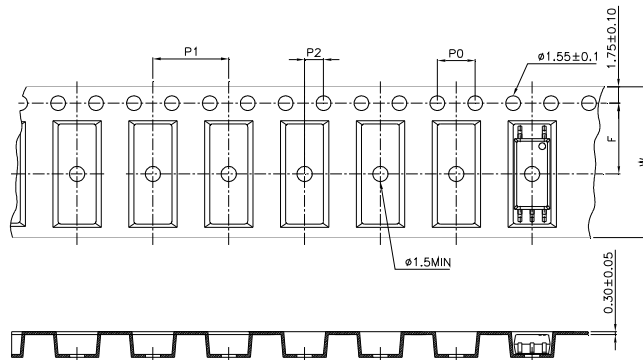
## Photocoupler LTV-5314 series

### 3. TAPING DIMENSIONS

#### 3.1 LTV-5314-TP



#### 3.3 LTV-5314-TP1



Description	Symbol	Dimension in mm (inch)
Tape wide	W	$16 \pm 0.3$ (0.47)
Pitch of sprocket holes	P <sub>0</sub>	$4 \pm 0.1$ (0.15)
Distance of compartment	F	$7.5 \pm 0.1$ (0.217)
	P <sub>2</sub>	$2 \pm 0.1$ (0.079)
Distance of compartment to compartment	P <sub>1</sub>	$8 \pm 0.1$ (0.315)

#### 3.5 Quantities Per Reel

Package Type	LTV-5314 series
Quantities (pcs)	3000

## Photocoupler LTV-5314 series

### 4. IEC/EN/DIN EN 60747-5-5 Insulation Characteristics

Description	Symbol	LTV-5314	Unit
Climatic Classification	—	40/110/21	—
Pollution Degree (DIN VDE 0110/1.89)	—	2	—
Maximum Working Insulation Voltage	$V_{IORM}$	1230	$V_{peak}$
Input to Output Test Voltage, Method b* $V_{IORM} \times 1.875 = V_{PR}$ , 100% Production Test with $t_m = 1$ sec, Partial discharge < 5 pC	$V_{PR}$	2310	$V_{peak}$
Input to Output Test Voltage, Method a* $V_{IORM} \times 1.6 = V_{PR}$ , Type and Sample Test, $t_m = 10$ sec, Partial discharge < 5 pC	$V_{PR}$	1970	$V_{peak}$
Highest Allowable Overvoltage (Transient Overvoltage $t_{ini} = 60$ sec)	$V_{IOTM}$	8000	$V_{peak}$
Case Temperature	$T_S$	175	°C
Input Current	$I_{S, INPUT}$	45	mA
Output Power	$P_{S, OUTPUT}$	450	mW
Insulation Resistance at $T_S$ , $V_{IO} = 500$ V	$R_S$	$>10^9$	$\Omega$

\* Refer to the optocoupler section of the Isolation and Control Components Designer's Catalog, under Product Safety Regulations section, (IEC/EN/DIN EN 60747-5-5) for a detailed description of Method a and Method b partial discharge test profiles.

Note: These optocouplers are suitable for "safe electrical isolation" only within the safety limit data. Maintenance of the safety data shall be ensured by means of protective circuits. Surface mount classification is Class A in accordance with CECC 00802.

#### 4.1 Insulation and Safety Related Specification

Parameter	Symbol	LTV-5314	Unit	Test Condition
Minimum External Air Gap (External Clearance)	L(101)	8.0	mm	Measured from input terminals to output terminals, shortest distance through air.
Minimum External Tracking (External Clearance)	L(102)	8.0	mm	Measured from input terminals to output terminals, shortest distance
Tracking Resistance (Comparative Tracking Index)	CTI	$>175$	V	DIN EN 60112 (VDE 0303 Teil 11)

## Photocoupler LTV-5314 series

### 5. RATING AND CHARACTERISTICS

#### 5.1 Absolute Maximum Ratings

Parameter	Symbol	Min	Max	Unit	Note
Storage Temperature	$T_{stg}$	-55	+125	°C	—
Operating Temperature	$T_{opr}$	-40	+110	°C	—
Total Output Supply Voltage	$(V_{CC} - V_{EE})$	0	35	V	—
Average Forward Input Current	$I_F$	—	20	mA	—
Peak Transient Input Current	$I_{F(TRAN)}$	—	1.0	A	1
Reverse Input Voltage	$V_R$	5	—	V	—
“High” Peak Output Current	$I_{OH(PEAK)}$	—	1.5	A	2
“Low” Peak Output Current	$I_{OL(PEAK)}$	—	1.5	A	
Output Voltage	$V_{O(PEAK)}$	—	$V_{CC}$	V	—
Input Power Dissipation	$P_I$	—	40	mW	—
Output IC Power Dissipation	$P_O$	—	450	mW	—
Lead Solder Temperature	$T_{sol}$	—	260	°C	—

Note: Ambient temperature = 25°C, unless otherwise specified. Stresses exceeding the absolute maximum ratings can cause permanent damage to the device. Exposure to absolute maximum ratings for long periods of time can adversely affect reliability.

Note: A ceramic capacitor (1  $\mu$ F) should be connected between pin 6 and pin 4 to stabilize the operation of a high gain linear amplifier. Otherwise, this Photocoupler may not switch properly. The bypass capacitor should be placed within 1 cm of each pin.

Note 1: Pulse width (PW)  $\leq$  1  $\mu$ s, 300 pps

Note 2: Exponential waveform. Pulse width  $\leq$  0.3  $\mu$ s,  $f \leq$  15 kHz

#### 5.2 Recommended Operating Conditions

Parameter	Symbol	Min	Max	Unit	Note
Supply Voltage	$V_{CC}$	10	30	V	
Input Current (ON)	$I_{FL(ON)}$	3	10	mA	1
Input Voltage (OFF)	$V_{F(OFF)}$	0	0.8	V	
Peak Low-Level Output Current	$I_{OPH}$	—	-1.5	A	
Peak Low-Level Output Current	$I_{OPL}$	—	1.5	A	
Operating Frequency	$f$	—	50	kHz	

Note 1: The rise and fall times of the input on-current should be less than 0.5  $\mu$ s

## Photocoupler LTV-5314 series

### 5.3 ELECTRICAL OPTICAL CHARACTERISTICS

	Parameter	Symbol	Min.	Typ.	Max.	Unit	Test Condition	Figure	Note
Input	Input Forward Voltage	$V_F$	1.45	1.6	1.8	V	$I_F = 10\text{mA}$	1	—
	Input Forward Voltage Temperature Coefficient	$\Delta V_F / \Delta T$	—	-2.0	—	mV/°C	$I_F = 10\text{mA}$	—	—
	Input Threshold Current (Low to High)	$I_{FLH}$	—	1	5	mA	$V_{CC} = 10\text{-}30\text{ V}, V_O > 1\text{ V}$	4,18	—
	Input Reverse Current	$I_R$	—	—	10	uA	$V_R = 5\text{ V}$	—	—
	Input Threshold Voltage (High to Low)	$V_{FHL}$	0.8	—	—	V	$V_{CC} = 10\text{-}30\text{ V}, V_O < 1\text{ V}$	—	—
	Input Capacitance	$C_{IN}$	—	33	—	pF	$f = 1\text{ MHz}, V_F = 0\text{ V}$	—	—
Output	High Level Supply Current	$I_{CCH}$	—	1.7	3	mA	$I_F = 10\text{ mA}, V_{CC} = 30\text{ V}, V_O = \text{Open}$	5,6	—
	Low Level Supply Current	$I_{CCL}$	—	2.0	3	mA	$I_F = 0\text{ mA}, V_{CC} = 30\text{ V}, V_O = \text{Open}$		—
	High level output current	$I_{OH}$	—	—	-0.4	A	$V_O = (V_{CC} - 1.5\text{ V})$	10,16	1
			—	—	-1.5		$V_O = (V_{CC} - 4\text{ V})$		2
	Low level output current	$I_{OL}$	0.4	—	—	A	$V_O = (V_{EE} + 1.5\text{ V})$	9,17	1
			1.5	—	—		$V_O = (V_{EE} + 4\text{ V})$		2
	High level output voltage	$V_{OH}$	$V_{CC} - 0.3$	$V_{CC} - 0.1$	—	V	$I_F = 10\text{mA}, I_O = -100\text{mA}$	8,14	—
	Low level output voltage	$V_{OL}$	—	$V_{EE} + 0.25$	$V_{EE} + 0.4$	V	$I_F = 0\text{mA}, I_O = 100\text{mA}$	7,15	—
UVLO Threshold	$V_{UVLO+}$	6.9	7.8	8.7	V	$V_O > 5\text{ V}, I_F = 10\text{ mA}$	19	—	
	$V_{UVLO-}$	5.9	6.7	7.5	V	$V_O < 5\text{ V}, I_F = 10\text{ mA}$		—	
UVLO Hysteresis	$UVLO_{HYS}$	—	1.1	—	V	—	—	—	

All Typical values at  $T_A = 25^\circ\text{C}$  and  $V_{CC} - V_{EE} = 30\text{ V}$ , unless otherwise specified; all minimum and maximum specifications are at recommended operating condition. (Refer to 5.2)

Note 1: Maximum pulse width = 50  $\mu\text{s}$ .

Note 2: Maximum pulse width = 10  $\mu\text{s}$ .

## Photocoupler LTV-5314 series

### 6. SWITCHING SPECIFICATION

Parameter	Symbol	Min.	Typ.	Max.	Unit	Test Condition	Figure	Note
Propagation Delay Time to High Output Level	$t_{PLH}$	50	90	150	ns	$R_g = 10\Omega$ , $C_g = 25nF$ , $f = 25\text{ kHz}$ , Duty Cycle = 50% $I_F = 3\text{ to }10\text{ mA}$ , $V_{CC} = 10\text{ to }30V$ $V_{EE} = \text{ground}$	11, 12, 13, 20	—
Propagation Delay Time to Low Output Level	$t_{PHL}$	50	110	150				—
Pulse Width Distortion	PWD	—	—	50				—
Propagation delay difference between any two parts or channels	PDD	-100	—	100				3
Output Rise Time (10 to 90%)	$T_r$	—	20	—			20	—
Output Fall Time (90 to 10%)	$T_f$	—	25	—				—
Common mode transient immunity at high level output	$ CM_H $	30	—	—	kV/ $\mu$ s	$T_A = 25^\circ\text{C}$ , $I_F = 5\text{ mA}$ , $V_{CM} = 1000\text{ V}$ , $V_{CC} = 30\text{ V}$	21	1
Common mode transient immunity at low level output	$ CM_L $	30	—	—	kV/ $\mu$ s	$T_A = 25^\circ\text{C}$ , $V_F = 0\text{ V}$ , $V_{CM} = 1000\text{ V}$ , $V_{CC} = 30\text{ V}$		2

All Typical values at  $T_A = 25^\circ\text{C}$  and  $V_{CC} - V_{EE} = 30\text{ V}$ , unless otherwise specified; all minimum and maximum specifications are at recommended operating condition. (Refer to 5.2)

Note 1:  $CM_H$  is the maximum rate of rise of the common mode voltage that can be sustained with the output voltage in the logic high state ( $V_O > 15\text{ V}$ ).

Note 2:  $CM_L$  is the maximum rate of fall of the common mode voltage that can be sustained with the output voltage in the logic low state ( $V_O < 1\text{ V}$ ).

Note 3: The difference between  $t_{PHL}$  and  $t_{PLH}$  between any two parts series parts under same test conditions.



Photocoupler  
LTV-5314 series

7. TYPICAL PERFORMANCE CURVES & TEST CIRCUITS

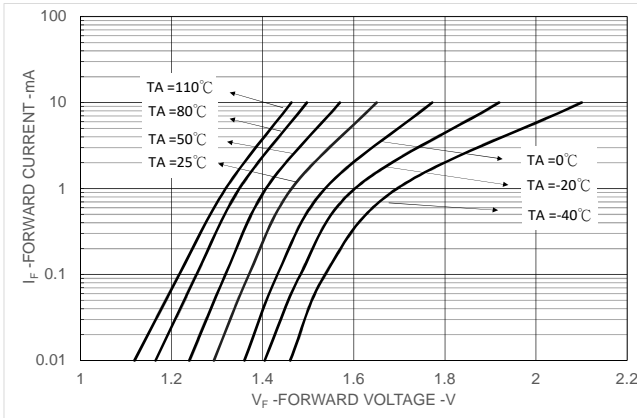


Figure 1.  $I_F$  vs.  $V_F$

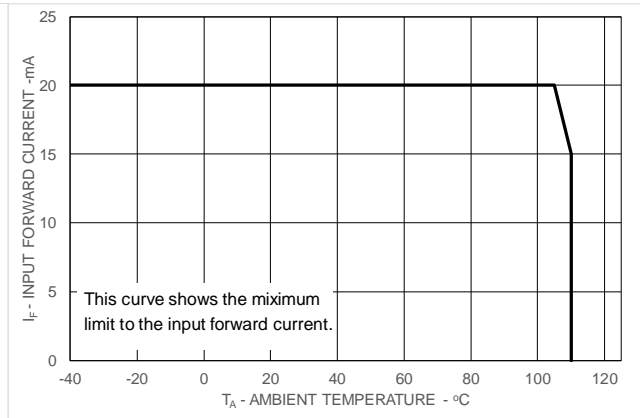


Figure 2.  $I_F$  vs. Temperature

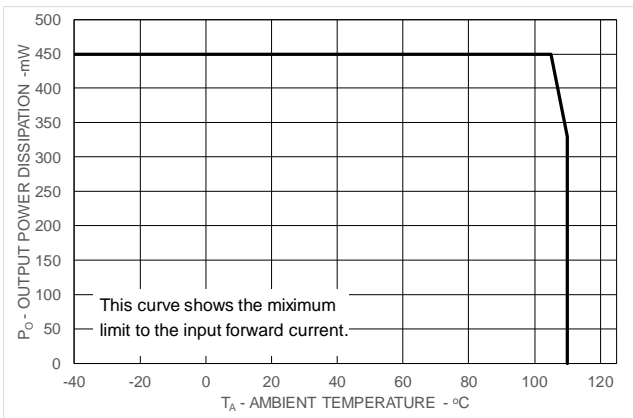


Figure 3.  $P_O$  vs. Temperature

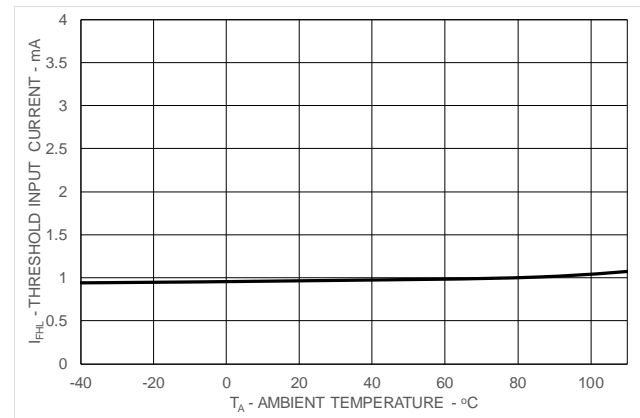


Figure 4.  $I_{FLH}$  vs. Temperature

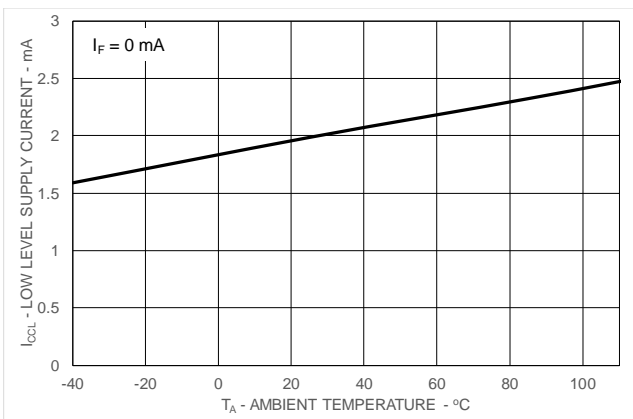


Figure 5.  $I_{CCL}$  vs. Temperature

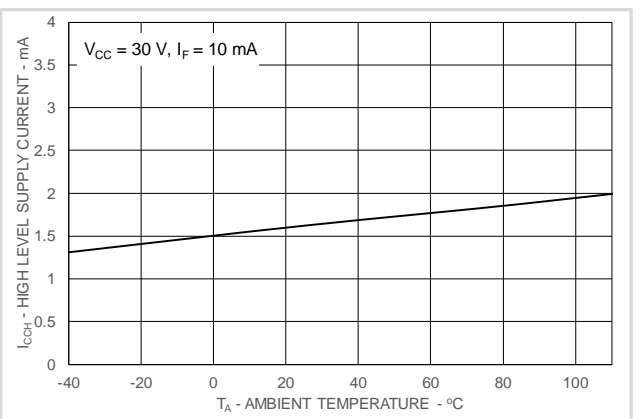


Figure 6.  $I_{CCH}$  vs. Temperature

# Photocoupler LTV-5314 series

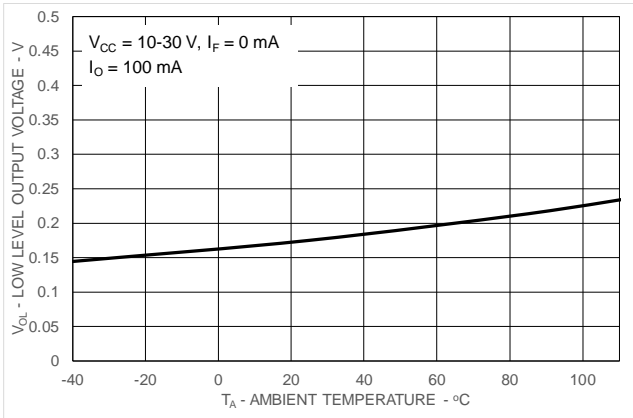


Figure 7. VOL vs. Temperature

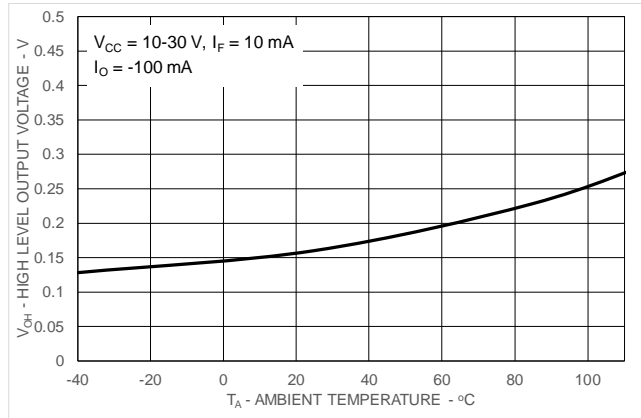


Figure 8. (VCC-VOH) vs. Temperature

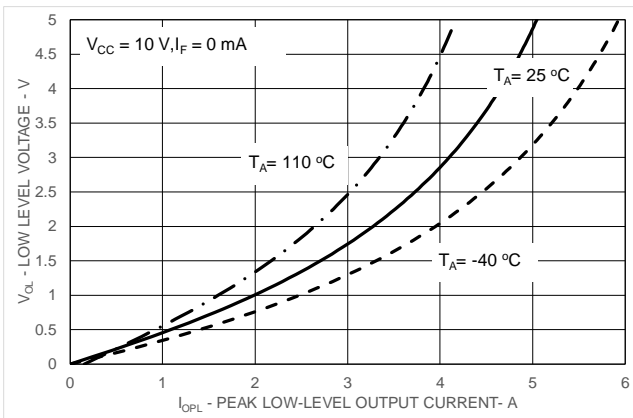


Figure 9. VOL vs. IOPL

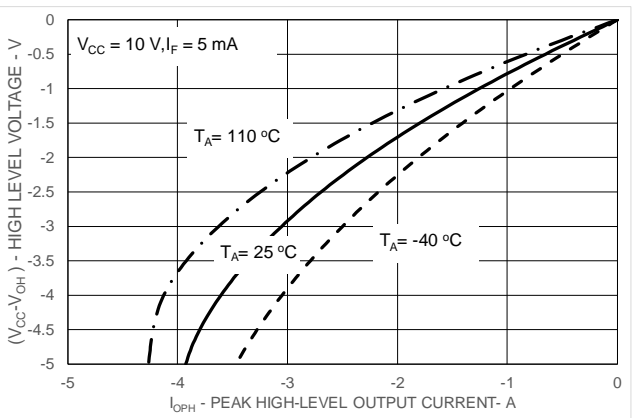


Figure 10. VOH vs. IOPH

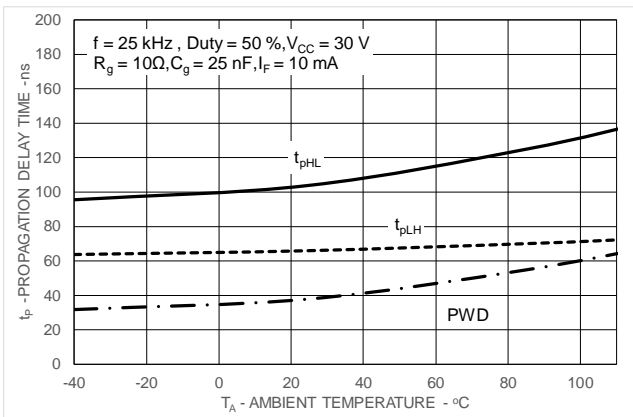


Figure 11. Propagation Delay Time vs. Temperature

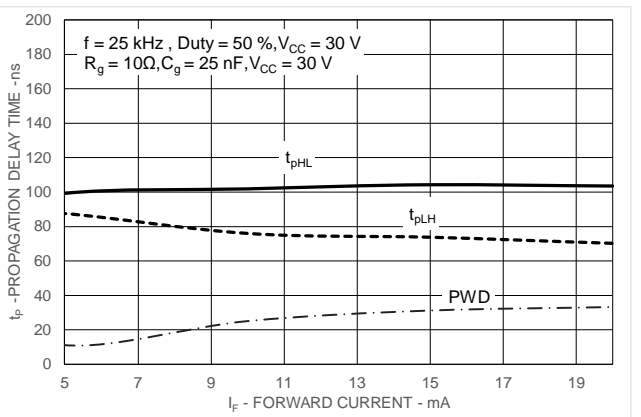


Figure 12. Propagation Delay Time vs. IF

## Photocoupler LTV-5314 series

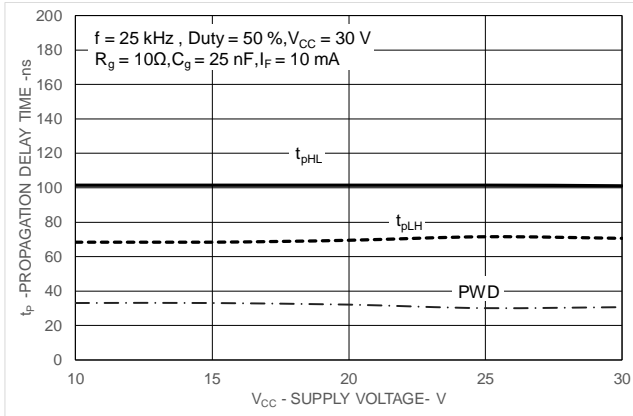


Figure 13. Propagation Delay Time vs. V<sub>cc</sub>

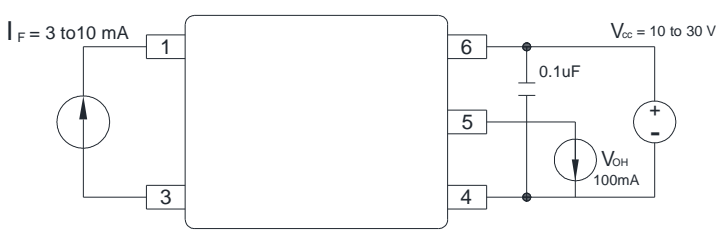


Figure 14 : V<sub>OH</sub> Test Circuit

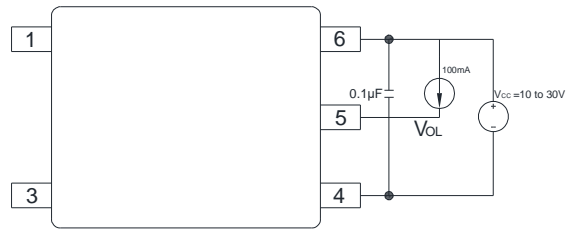


Figure 15 : V<sub>OL</sub> Test Circuit

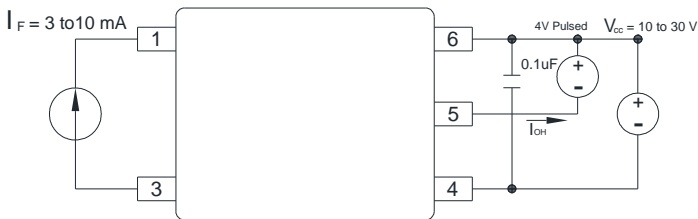


Figure 16 : I<sub>OH</sub> Test Circuit

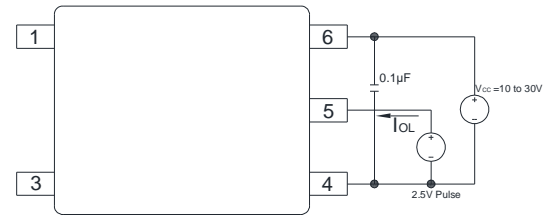


Figure 17 : I<sub>OL</sub> Test Circuit



Figure 18 : I<sub>FLH</sub> Test Circuit



Figure 19 : U<sub>VLO</sub> Test Circuit

## Photocoupler LTV-5314 series

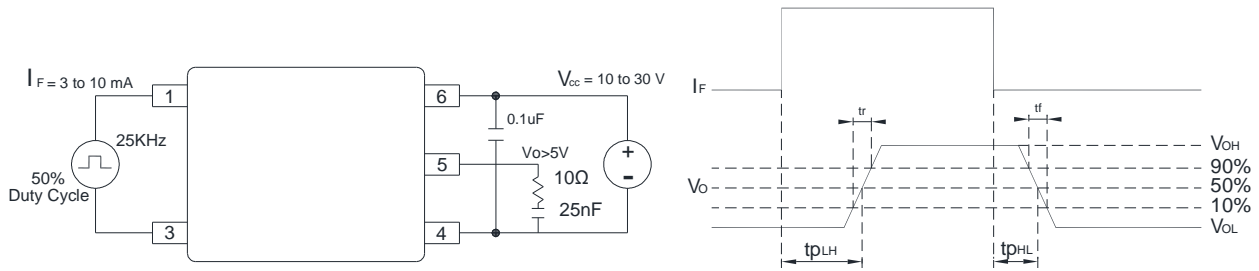


Figure 20 :  $t_r$ ,  $t_f$ ,  $t_{PLH}$  and  $t_{PHL}$  Test Circuit and Waveforms

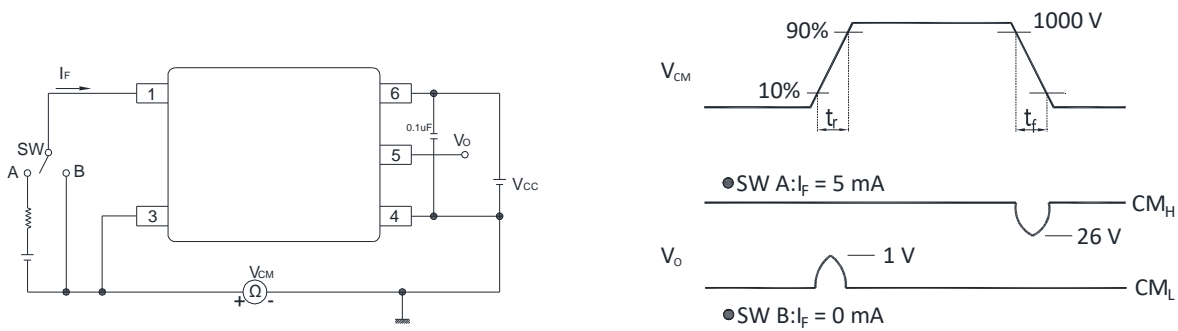


Figure 21 : CMR Test Circuit and Waveforms

## Photocoupler LTV-5314 series

### 8. ISOLATION CHARACTERISTIC

Parameter	Symbo	Device	Min.	Typ.	Max.	Unit	Test Condition	Note
Withstand Insulation	$V_{ISO}$	LTV-5314	5000	—	—	V	RH $\leq$ 40%-60%,	1, 2
Input-Output Resistance	$R_{I-O}$	—	—	$10^{12}$	—	$\Omega$	$V_{I-O} = 500V$ DC	1
Input-Output Capacitance	$C_{I-O}$	—	—	0.9	—	pF	f = 1MHz, $T_A = 25^\circ C$	1

All Typical values at  $T_A = 25^\circ C$  unless otherwise specified. All minimum and maximum specifications are at recommended operating condition. (Refer to 5.2)

Note 1: Device is considered a two terminal device: pins 1, 2, 3 are shorted together and pins 4, 5, 6 are shorted together.

Note 2: According to UL1577, each photocoupler is tested by applying an insulation test voltage  $6000V_{RMS}$  for one second (leakage current less than 10uA). This test is performed before the 100% production test for partial discharge

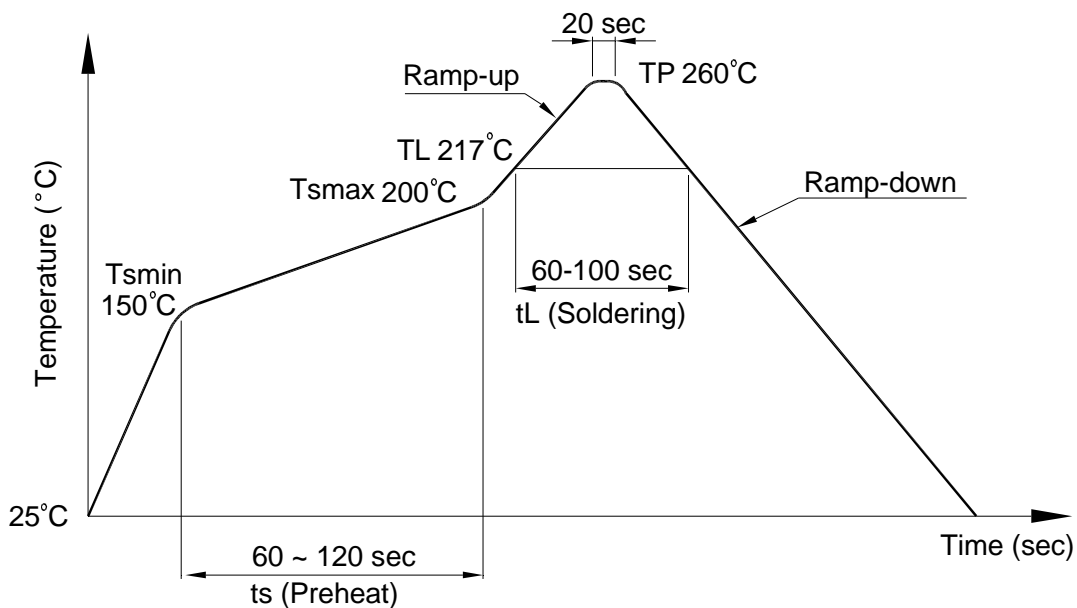
# Photocoupler LTV-5314 series

## 9. TEMPERATURE PROFILE OF SOLDERING

### 9.1 IR Reflow soldering (JEDEC-STD-020C compliant)

One time soldering reflow is recommended within the condition of temperature and time profile shown below. Do not solder more than three times.

Profile item	Conditions
Preheat	
- Temperature Min ( $T_{Smin}$ )	150°C
- Temperature Max ( $T_{Smax}$ )	200°C
- Time (min to max) (ts)	90±30 sec
Soldering zone	
- Temperature ( $T_L$ )	217°C
- Time ( $t_L$ )	60 ~ 100 sec
Peak Temperature ( $T_P$ )	260°C
Ramp-up rate	3°C / sec max.
Ramp-down rate	3~6°C / sec



**Photocoupler  
LTV-5314 series**

**9.2 Wave soldering (JEDEC22A111 compliant)**

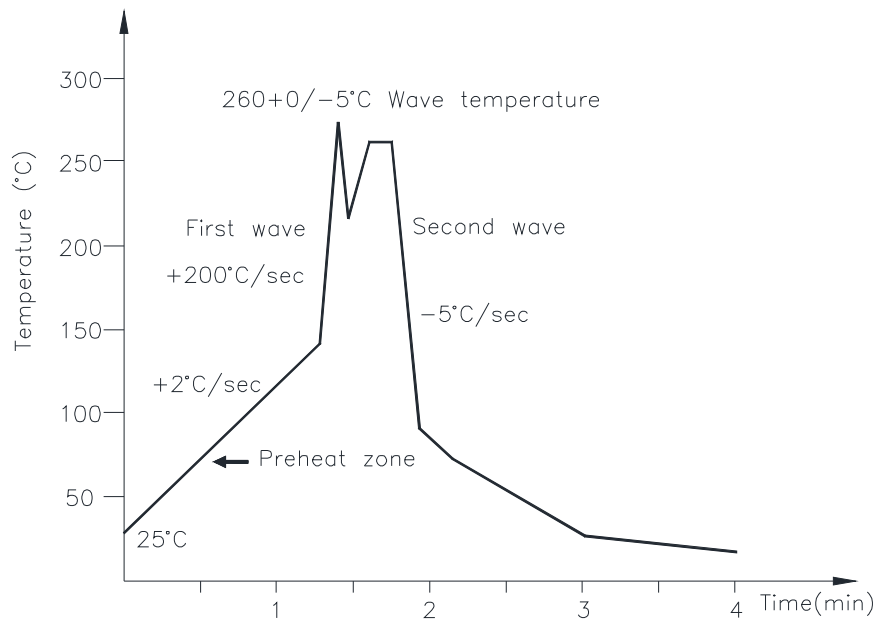
One time soldering is recommended within the condition of temperature.

Temperature:  $260+0/-5^{\circ}\text{C}$

Time: 10 sec.

Preheat temperature: 25 to  $140^{\circ}\text{C}$

Preheat time: 30 to 80 sec.



**9.3 Hand soldering by soldering iron**

Allow single lead soldering in every single process. One time soldering is recommended.

Temperature:  $380+0/-5^{\circ}\text{C}$

Time: 3 sec max.

## Photocoupler LTV-5314 series

### 10. NAMING RULE

Part Number	Lead Frame		Suffix option			Quantity
	Type	Clearance distance	Tape&Reel Option	IEC/EN/DIN EN60747-5-5	Customer Code	
LTV-5314	Surface mount S-loop type	Min. 8mm	TP	-V	-	3000 pcs per reel
LTV-5314W	Surface mount W-loop type		TP1			

Example 1 : LTV-5314-TP1

Example 2 : LTV5314WTP1-V

\*Naming rule of VDE option : All "-" before -V be removed

### 11. Notes

- LiteOn is continually improving the quality, reliability, function or design and LiteOn reserves the right to make changes without further notices.
- The products shown in this publication are designed for the general use in electronic applications such as office automation equipment, communications devices, audio/visual equipment, electrical application and instrumentation.
- For equipment/devices where high reliability or safety is required, such as space applications, nuclear power control equipment, medical equipment, etc, please contact our sales representatives.
- When requiring a device for any "specific" application, please contact our sales in advice.
- If there are any questions about the contents of this publication, please contact us at your convenience.
- The contents described herein are subject to change without prior notice.
- Immerge unit's body in solder paste is not recommended.



单击下面可查看定价，库存，交付和生命周期等信息

[>>Lite-On\(光宝\)](#)