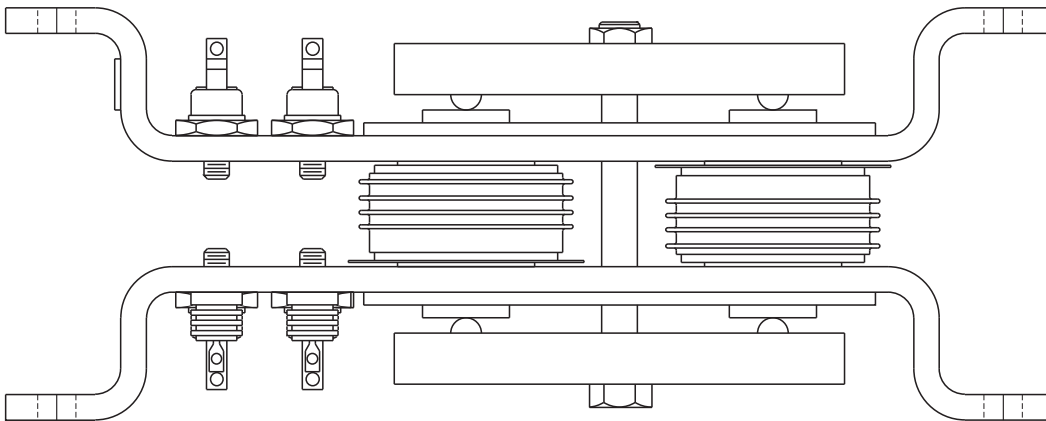
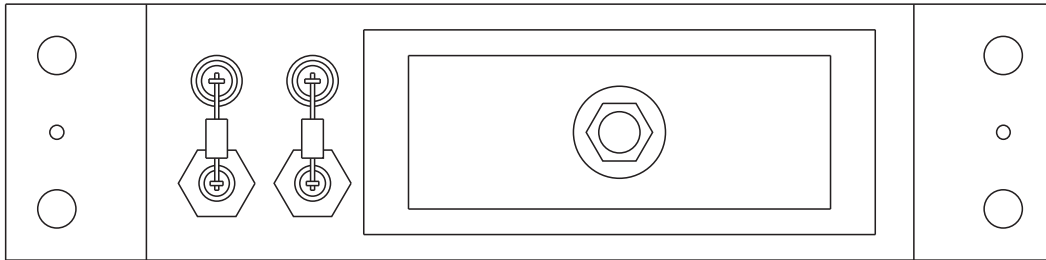


PPI-600V

PARALLEL PATH ISOLATOR

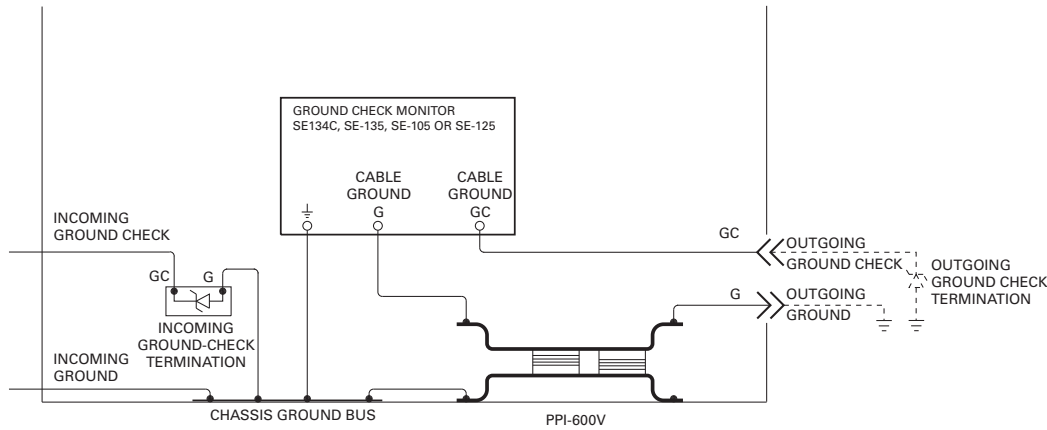
OCTOBER 13, 2011

REVISION 0



The PPI-600V is a ground-wire device that allows a trailing-cable ground to be monitored independently of the parallel ground path created when trailing-cable-fed equipment is in contact with the earth. It also allows a trailing-cable ground to be monitored in the presence of stray dc and it prevents inter-machine arcing caused by the voltages induced in the cables.

TYPICAL APPLICATION



NOTES:

1. PARALLEL PATH ISOLATOR IS NOT POLARIZED. EITHER FLANGE CAN BE CONNECTED TO CHASSIS.
2. THE OUTGOING GROUND MUST BE ISOLATED FROM THE CHASSIS GROUND BUS. IF A FLANGE-MOUNTED RECEPTACLE IS USED, VERIFY THAT THE FLANGE IS ISOLATED FROM THE GROUND PIN, AND
 - USE A MATING PLUG WITH A NON-METALLIC HOUSING, OR
 - ISOLATE THE FLANGE FROM THE CHASSIS IF THE MATING PLUG HAS A METALLIC HOUSING.
3. CABLE PLUGS AND RECEPTACLES WITH GROUNDED METAL HOUSINGS MUST BE ISOLATED FROM EARTH TO PREVENT PARALLEL GROUND PATHS.
4. FOR SYSTEMS ABOVE 600 VAC, CONNECT A V131DA40 MOV ACROSS THE PPI-600V.

TECHNICAL SPECIFICATIONS

Dimensions:

Height.....102 mm (4.0")
 Width.....235 mm (9.3")
 Depth.....64 mm (2.5")

Shipping Weight.....11.5 lb (5.5 kg)

Off-State Resistance>20 kΩ @ 125°C
 and V < 10.0 V

On-State Voltage< 2 V @ 25°C
 and I < 2000 A

Minimum Trigger Voltage20 V

Maximum Trigger Voltage25 V

Clamp Rating:

1 Cycle15 kA
 10 second2.5 kA

Failure Mode.....Short Circuit

DISCLAIMER

Specifications are subject to change without notice. Littelfuse Startco is not liable for contingent or consequential damages, or for expenses sustained as a result of incorrect application, incorrect adjustment, or a malfunction.

单击下面可查看定价，库存，交付和生命周期等信息

[>>Littelfuse\(美国力特\)](#)