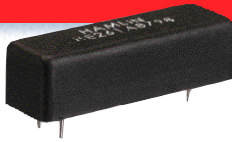


HE200 Features and Benefits



Features

- Multi-pole configuration (up to 5 normally open contacts)
- Combination normally open/normally closed option
- Available with 5V, 12V or 24V coil options as standard
- Magnetic shield option
- Lengthways coil option
- Staggered pins

Benefits

- One relay, many contacts reducing space and cost without compromising flexibility.
- Lower power coil consumption than competing electromechanical devices.
- Hermetically sealed switching contact is immune to the effects of its environment.

Applications

- Security
- Telecoms
- Instrumentation
- Process Control
- Industrial

DIMENSIONS

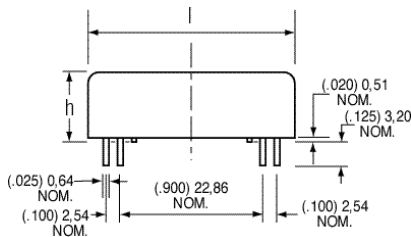


Figure 1 HE200

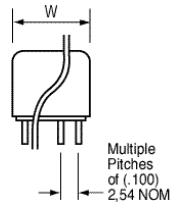
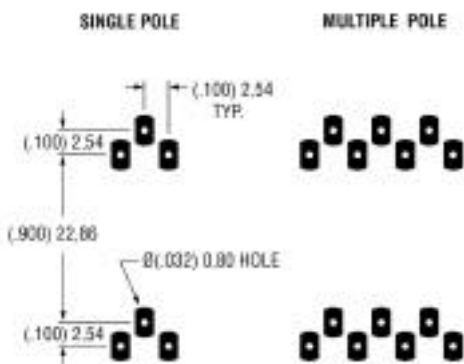


Figure 2 HE200

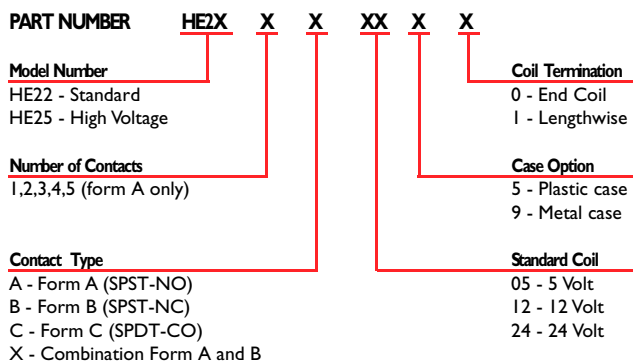
Table 1

Relay Type	Case Size, Max.	All h	All l	1 w	2 w	3 w
HE200	Metal Case, (in.),mm Plastic Case, (in.),mm	(.375) 9,5 (.394) 10	(1.260) 32 (1.280) 32,5	(.394) 10 (.414) 10,5	(.493) 12,5 (.512) 13	(.591) 15 (.611) 15,5

HE200 PCB LAYOUT (Bottom View)



ORDERING INFORMATION



See next page for : **Electrical and Operating Characteristics Description and Coil Characteristics**

Table 2 HE200 Series Electrical and Operating Characteristics @ 25° C.

Column Number from Table 3	Column 1	Column 2	Column 3
Contact Type	Form A Form B Standard	Form C Standard	Form A High Voltage
Relay Types	HE200	HE200	HE200
CONTACT RATINGS Contact Hamlin for specific load/life details.	Power, Switching Voltage, Switching Current, Switching Current, Carry	Watt - max. Vdc - max. A - max. A - max.	10 200 0.5 1.2
VOLTAGE HOLD-OFF	Across Open Contacts Contacts to Coil Between Isolated Terminals Plastic case Metal Case	Vdc - min. Vac - min. Vac - min. Vac - min.	250 1500 1500 1000
RESISTANCE	Contact, Initial Insulation: Across Open Contacts Between Isolated Terminals	- max. - min. - min.	0.150 10 ¹⁰ 10 ¹⁰
TIMING	Operate Time Release Time	ms - max. ms - max.	1.0 1.0
ENVIRONMENTAL	Temperature, Operating Temperature, Storage Vibration Resistance Shock Resistance	°C °C G - max. 10-2000 Hz. G - max. 11 ms, 1/2 sine	-40 to +85 -40 to +105 20 50 50

Table 3 HE200 Series Miniature Relay Coil Characteristics @ 25° C.

Contact Form & Type	Electrical & Operating Characteristics	Dimensions Case Size	Part Number Note 1	Nominal Coil Voltage Vdc	Coil Resistance ±10% Ohms	Must Operate Vdc	Must Release Vdc	Maximum Coil Voltage	Top View 2,54 mm 0.1in Grid Dot on Case Pin 1 Numbers not printed on case
1A SPST-NO	See Table 2 Column 1	Table 1 Column 1	HE221A0550	5	140	3.5	0.28	11	
			HE221A1250	12	855	8.4	0.7	27	
			HE221A2450	24	3285	16.8	1.4	54	
			HE221A0590	5	345	3.5	0.4	18	
			HE221A1290	12	2145	8.4	1.0	46	
			HE221A2490	24	7845	16.8	2.0	88	
1B SPST-NC	See Table 2 Column 1	Table 1 Column 2	HE221B0550	5	110	3.5	0.28	6.5	
			HE221B1250	12	680	8.4	0.7	14.0	
			HE221B2450	24	2770	16.8	1.4	28.0	
			HE221B0590	5	180	3.5	0.4	6.5	
			HE221B1290	12	1100	8.4	1.0	14.0	
			HE221B2490	24	4240	16.8	2.0	28.0	
2A DPST-NO	See Table 2 Column 1	Table 1 Column 2	HE222A0550	5	70	3.5	0.25	9	
			HE222A1250	12	445	8.4	0.65	22	
			HE222A2450	24	1700	16.8	1.3	43	
			HE222A0590	5	180	3.5	0.4	14	
			HE222A1290	12	1100	8.4	1.0	36	
			HE222A2490	24	4240	16.8	2.0	71	
1A SPST-NO High Voltage	See Table 2 Column 3	Table 1 Column 1	HE251A0550	5	140	3.5	0.28	11	
			HE251A1250	12	855	8.4	0.7	27	
			HE251A2450	24	3285	16.8	1.4	54	
			HE251A0590	5	345	3.5	0.4	18	
			HE251A1290	12	2145	8.4	1.0	46	
			HE251A2490	24	7845	16.8	2.0	88	
1C SPDT-CO	See Table 2 Column 2	Table 1 Column 1	HE221C0550	5	140	3.5	0.28	8	
			HE221C1250	12	855	8.4	0.7	22	
			HE221C2450	24	3285	16.8	1.4	42	
			HE221C0590	5	140	3.5	0.28	8	
			HE221C1290	12	855	8.4	0.7	22	
			HE221C2490	24	3285	16.8	1.4	42	
2C DPDT-CO	See Table 2 Column 2	Table 1 Column 3	HE222C0550	5	55	3.5	0.3	8	
			HE222C1250	12	370	8.4	0.75	22	
			HE222C2450	24	1350	16.8	1.5	42	
			HE222C0590	5	55	3.5	0.3	8	
			HE222C1290	12	370	8.4	0.75	22	
			HE222C2490	24	1350	16.8	1.3	42	

- Notes: 1) Part number's last two digits denote case materials: 50 is plastic, 90 is metal.
 2) The relays shown on the right are also available on a build to order basis. Contact Hamlin for details.
 3) HE221B - Exceeding recommended voltage may cause contact reclosure.
 4) Special requirements such as side coil termination, coil resistance and contact configuration are available. Contact Hamlin for details.

Type	1A	2A	3A	4A	5A	1B	1A+1B	2A+2B	4C
HE22	+	+	+	+	+	+	+	+	+
HE25	+	+	+	+	+	+	+	+	-

1A+1B and 2A+2B are also known as 2X and 4X

INFORMATION PROVIDED ON THIS DATA SHEET IS PROVIDED FOR INFORMATION PURPOSES ONLY AND SHOULD NOT BE RELIED UPON AS BEING ACCURATE FOR ANY PARTICULAR PURPOSE. Product performance may be affected by the application to which the product is put. Upon request, HAMLIN will assist purchasers by providing information specific to any particular application. HAMLIN disclaims any and all liability whatsoever for any purchaser's reliance upon the information contained on this data sheet without further consultation with authorized representatives of HAMLIN.

单击下面可查看定价，库存，交付和生命周期等信息

[>>Littelfuse\(美国力特\)](#)