

USW3866 RTD Probe



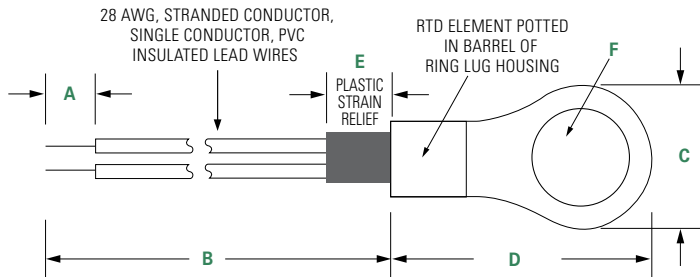
Description

Littelfuse offers Ring Lug probe assemblies suitable for a wide range of temperature sensing applications. If the dimensions and electrical characteristics on this product won't work for your requirements, please contact us for further assistance.

Features

- High Accuracy
- #10 Mounting Hole
- Plastic Strain Relief
- PVC Insulated Lead Wire
- 105°C Max Operating Temperature

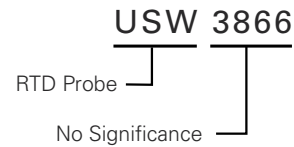
Dimensions



Dimensions shown in inches.

A	B	C	D	E	F
0.250" ± 0.070"	12.0" ± 1.0"	0.375" Max	0.750" Max	0.285" ± 0.150"	0.197" Nom #10 Stud

Part Numbering System



Note: Not all combinations of Part Number codes are available. Contact Littelfuse for details.

Specifications

Part Number	Resistance Ohms @0°C	Resistance Tol. ± % @ 0°C	IEC 60751 Class	TCR ppm/°C	Temperature Rating °C
USW3866	1000	0.12	F 0.3	3850	105 (max)

Disclaimer Notice - Information furnished is believed to be accurate and reliable. However, users should independently evaluate the suitability of and test each product selected for their own applications. Littelfuse products are not designed for, and may not be used in, all applications. Read complete Disclaimer Notice at: www.littelfuse.com/disclaimer-electronics

单击下面可查看定价，库存，交付和生命周期等信息

[>>Littelfuse\(美国力特\)](#)