

# POWR-GARD® Fuse Datasheet

## SPXC SERIES SOLAR FUSE

1500 V dc • 1 – 4 A

UL CE gPV RoHS REACH



### Description

The Littelfuse SPXC solar string fuse is designed specifically for 1-4 A 1500 V dc applications.

### Features/Benefits

- Full range, fast-acting fuse helps eliminate common low-overload faults
- 10 x 57 mm package size
- Up to 50,000A interrupting rating

### Applications

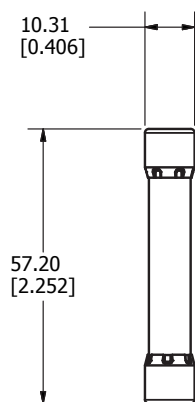
- Inverters
- Combiner boxes

### Web Resources

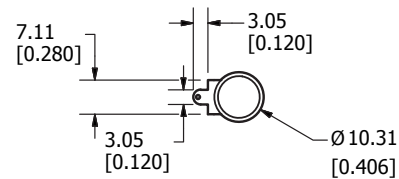
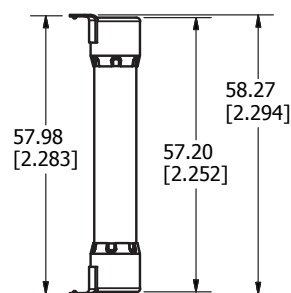
Download technical resources at: [Littelfuse.com/spxc](http://Littelfuse.com/spxc)  
 For silver plated version: [Littelfuse.com/spxcs](http://Littelfuse.com/spxcs)

### Dimensions mm (inches)

SPXC



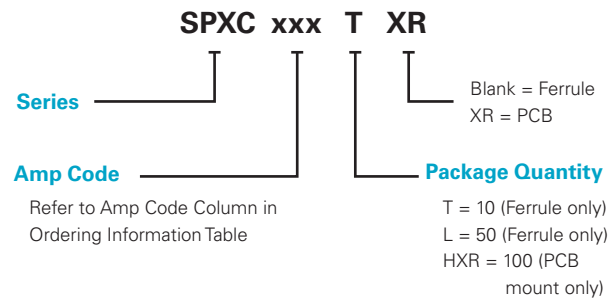
SPXC WITH PCB LEADS



### Specifications

<b>Voltage Rating</b>	1500 V dc
<b>Amperage Rating</b>	1, 2, 2.25, 2.5, 3, 3.5, 4 A
<b>Interrupting Rating</b>	15 kA (UL 248-19) 50kA (Self-Certified)
<b>Time Constant</b>	≤ 1ms
<b>Material</b>	Body: Melamine Caps: Copper Alloy (Nickel Plated)
<b>Approvals</b>	UL Listed (File: E339112)
<b>Applicable Standards</b>	UL 248-1, 248-19 IEC 60269-6 (electrically only)
<b>Environmental</b>	RoHS Compliant REACH
<b>Country of Origin</b>	Mexico

### Part Numbering System



# POWR-GARD® Fuse Datasheet

## SPXC SERIES SOLAR FUSE

### Ordering Information

#### Ferrule Version

SERIES	AMPERAGE	AMP CODE	CATALOG NUMBER	PRODUCT MARKING	PACK QUANTITY	ORDERING NUMBER	UPC
SPXC	1	001.	SPXC001	SPXC 1	10	SPXC001.T	07945822129
					50	SPXC001.L	07945822131
SPXC	2	002.	SPXC002	SPXC 2	10	SPXC002.T	07945822133
					50	SPXC002.L	07945822135
SPXC	2.25	2.25	SPXC2.25	SPXC 2 ¼	10	SPXC2.25T	07945819889
					50	SPXC2.25L	07945819891
SPXC	2.5	02.5	SPXC02.5	SPXC 2 ½	10	SPXC02.5T	07945819893
					50	SPXC02.5L	07945819895
SPXC	3	003.	SPXC003	SPXC 3	10	SPXC003.T	07945819897
					50	SPXC003.L	07945819899
SPXC	3.5	03.5	SPXC03.5	SPXC 3 ½	10	SPXC03.5T	07945819901
					50	SPXC03.5L	07945819903
SPXC	4	004.	SPXC004	SPXC 4	10	SPXC004.T	07945819905
					50	SPXC004.L	07945819907

### Ordering Information

#### PCB Version

SERIES	AMPERAGE	AMP CODE	CATALOG NUMBER	PRODUCT MARKING	PACK QUANTITY	ORDERING NUMBER	UPC
SPXC-R	1	001.	SPXC001-R	SPXC 1-R	100	SPXC001.HXR	07945822137
SPXC-R	2	002.	SPXC002-R	SPXC 2-R	100	SPXC002.HXR	07945822138
SPXC-R	2.25	2.25	SPXC2.25-R	SPXC 2 ¼-R	100	SPXC2.25HXR	07945822139
SPXC-R	2.5	02.5	SPXC02.5-R	SPXC 2 ½-R	100	SPXC02.5HXR	07945822140
SPXC-R	3	003.	SPXC003-R	SPXC 3-R	100	SPXC003.HXR	07945822141
SPXC-R	3.5	03.5	SPXC03.5-R	SPXC 3 ½-R	100	SPXC03.5HXR	07945822142
SPXC-R	4	004.	SPXC004-R	SPXC 4-R	100	SPXC004.HXR	07945822143

### Electrical Specifications

AMPERAGE	VOLTAGE	INTERRUPTING RATING	NOM COLD RESISTANCE (ohm)	WATTS LOSS AT 100 % RATED CURRENT (W)	WATTS LOSS AT 80 % RATED CURRENT (W)	MELTING I <sup>2</sup> t (A <sup>2</sup> s) (1500V dc)	TOTAL CLEARING I <sup>2</sup> t (A <sup>2</sup> s) 15 kA (1500 V dc)
	DC	DC					
1	1500	50 kA*	0.6253	1.07	.56	0.29	0.53
2	1500	50 kA*	0.1905	1.32	.70	1.55	5.13
2.25	1500	50 kA*	0.1245	0.90	0.50	5	13
2.5	1500	50 kA*	0.0793	0.91	0.50	11	26
3	1500	50 kA*	0.0721	0.92	0.51	14	40
3.5	1500	50 kA*	0.0487	0.94	0.53	34	87
4	1500	50 kA*	0.0439	0.95	0.54	56	127

\* 50 kA self-certified

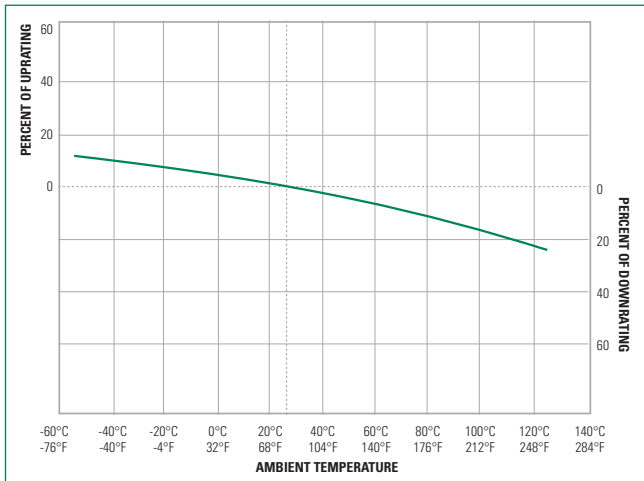
### Electrical Specification – Agency Requirements

AMPERAGE RATING	OPENING TIME (MINUTES)				
	100 % OF AMP RATING PER UL	113 % OF AMP RATING PER IEC	135 % OF AMP RATING PER UL	145 % OF AMP RATING PER IEC	200 % OF AMP RATING PER UL
1-4	Temperature Stabilization	60 Min	60 Max	60 Max	4 Max

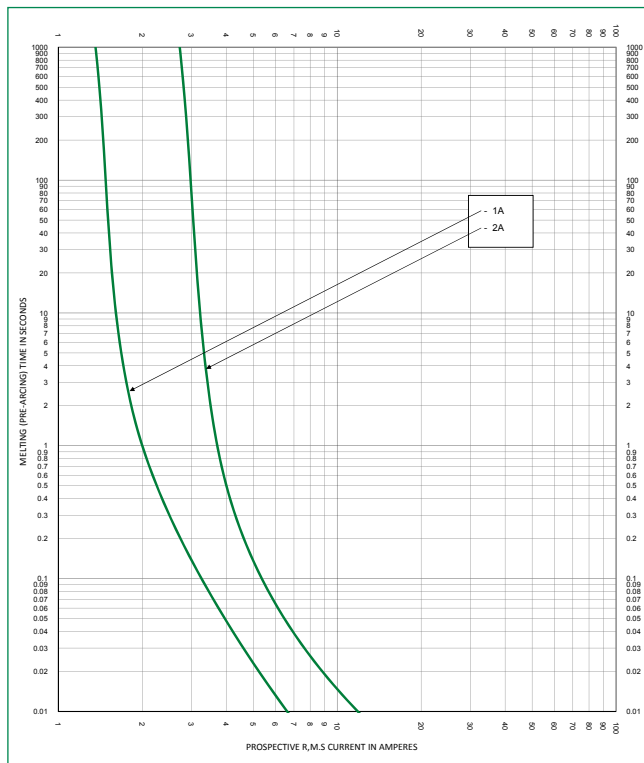
# POWR-GARD® Fuse Datasheet

## SPXC SERIES SOLAR FUSE

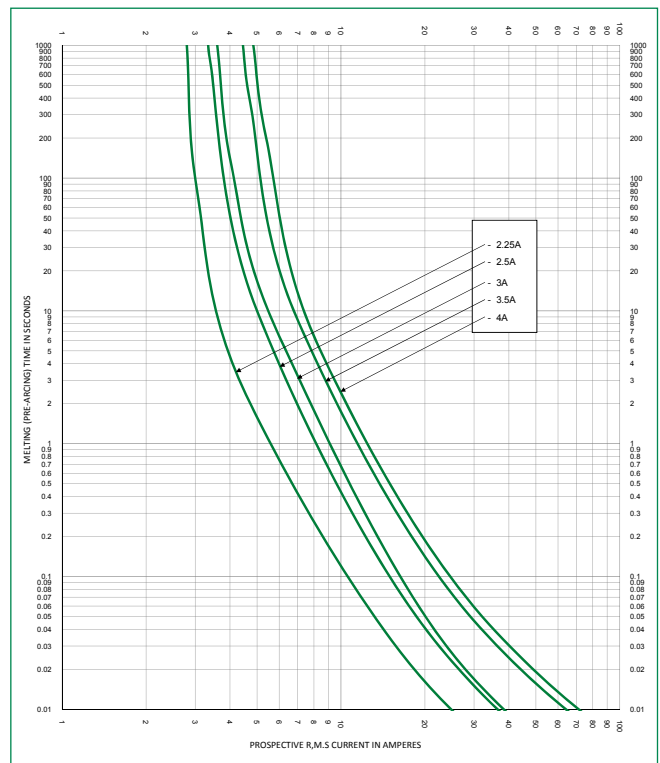
### Temperature Derating Curve (Temperature of Air Immediately Surrounding Fuse)



### Time Current Curve (1-2 A)



### Time Current Curve (2.25-4 A)



**Disclaimer Notice** – Information furnished is believed to be accurate and reliable. However, users should independently evaluate the suitability of and test each product selected for their own applications. Littelfuse products are not designed for, and may not be used in, all applications. Read complete Disclaimer Notice at [www.littelfuse.com/product-disclaimer](http://www.littelfuse.com/product-disclaimer).

单击下面可查看定价，库存，交付和生命周期等信息

[>>Littelfuse\(美国力特\)](#)