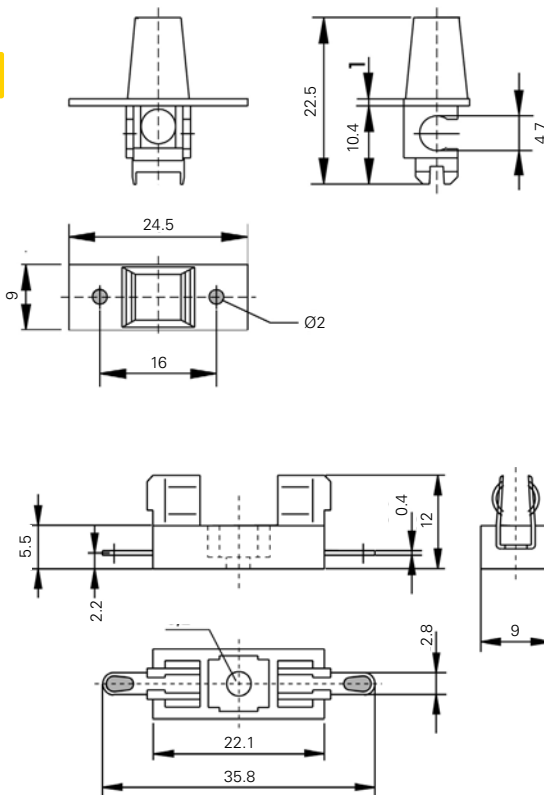


647 Series Molded Fuse Holder For 5x20mm Fuses



Dimensions



Product Characteristics

Compatible Fuse Sizes	5x20mm
Materials	Holder: Black Thermoplastic, UL94 V-0 Polyamide PA 6.6
	Adapter: Polyester PBT, UL94 V-0
	Metal Parts: Tin plated copper alloy
Electrical Data (23°C)	Rated Voltage: 250V
	Max. Current/Power: 6.3A/2.5W 6.3A/1.6W (with No. 640)
Mounting	Ø 3mm screw hole Hand adapter can be optionally used with Holder No. 646 and 647
Terminals	Solderable or 2.8mm quick connect - fits 0.5mm tabs
Minimum Cross Section	Conducting path - 2.5mm ²
Unit Weight	1.7g (Holder), 1.0g (Adapter)

Ordering Information

Ordering PN	Description
64700001003	5X20MM Fuse Block Cable Type
64000001003	Adapter Black
64000001403	Adapter Brown
64000001503	Adapter White
64000001603	Adapter Yellow
64000001703	Adapter Green
64000001903	Adapter Blue

Additional Information



Datasheet



Resources



Samples

Disclaimer Notice - Information furnished is believed to be accurate and reliable. However, users should independently evaluate the suitability of and test each product selected for their own applications. Littelfuse products are not designed for, and may not be used in, all applications. Read complete Disclaimer Notice at: www.littelfuse.com/disclaimer-electronics.

单击下面可查看定价，库存，交付和生命周期等信息

[>>Littelfuse\(美国力特\)](#)