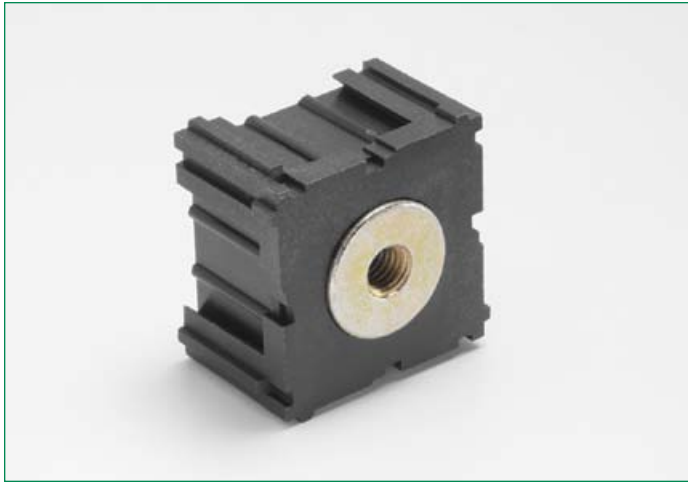
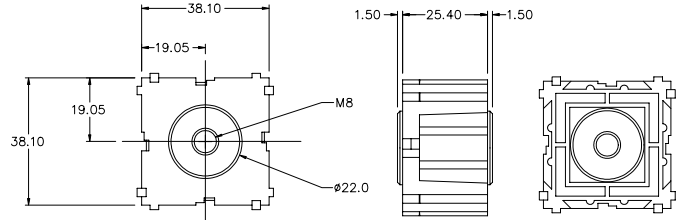


Power Tap Module

RoHS



Dimensions in mm / Maße in mm



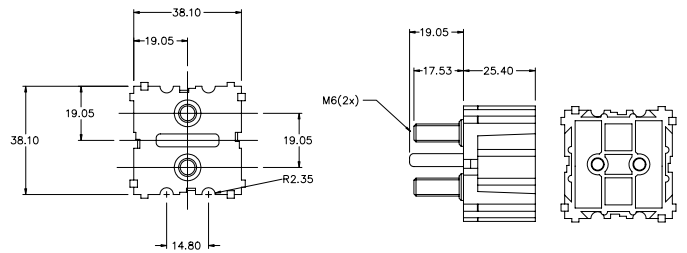
Part Number / Artikel-Nr.	Remarks / Bemerkungen
03540539Z (40 pcs.)	M8 Tread Metric / M8 Gewinde, metrisch
03540512Z (100 pcs.)	1/4 inch - 20 thread / 1/4 Inch - 20 Gewinde
03540513Z (100 pcs.)	5/16 inch - 18 thread / 5/16 Inch - 18 Gewinde

Stud Assembly Module (2-stud)

RoHS



Dimensions in mm / Maße in mm



Part Number / Artikel-Nr.	Remarks / Bemerkungen
03540537Z (20 pcs.)	M6 Thread, Metric / M6 Gewinde, metrisch
03540509Z (100 pcs.)	10-32 thread / 10-32 Gewinde

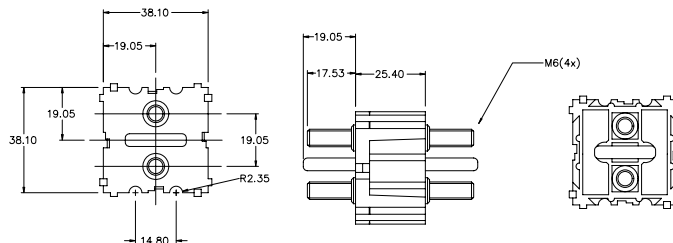
Specialty Modules

Stud Assembly Module (4-stud)

RoHS



Dimensions in mm / Maße in mm



Part Number / Artikel-Nr.	Remarks / Bemerkungen
03540538Z (20 pcs.)	M6 Thread Metric / M6 Gewinde, metrisch
03540510Z (100 pcs.)	10-32 thread / 10-32 Gewinde

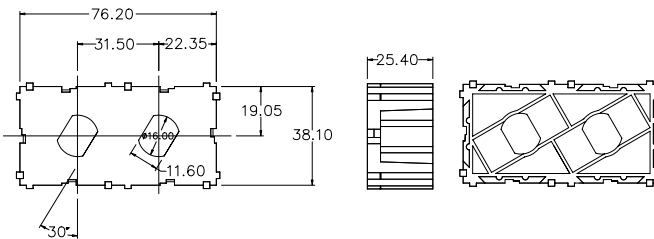
2-Position Push Button Circuit Breaker Module

RoHS

Specialty Modules



Dimensions in mm / Maße in mm



Part Number / Artikel-Nr.	Remarks / Bemerkungen
03540504Z (20 pcs.)	—

单击下面可查看定价，库存，交付和生命周期等信息

[>>Littelfuse\(美国力特\)](#)