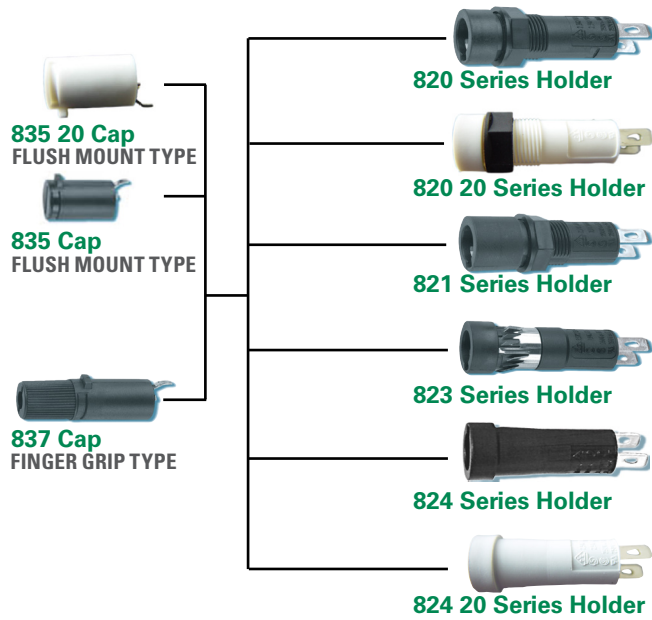


# 820/821/823/824 Series

## Panel Mount Enclosed Fuseholders



### Additional Information



Resources  
820 Series



Accessories  
820 Series



Samples  
820 Series



Resources  
821 Series



Accessories  
821 Series



Samples  
821 Series



Resources  
823 Series



Accessories  
823 Series



Samples  
823 Series



Resources  
824 Series



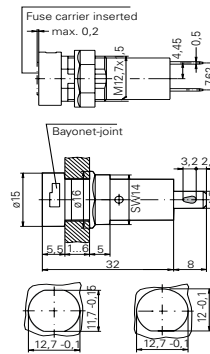
Accessories  
824 Series



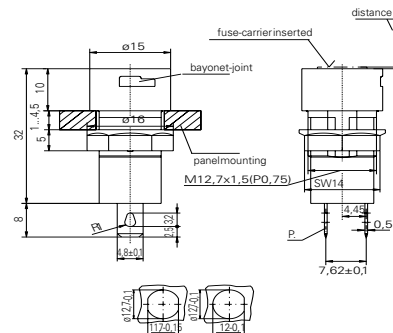
Samples  
824 Series

### Dimensions 820

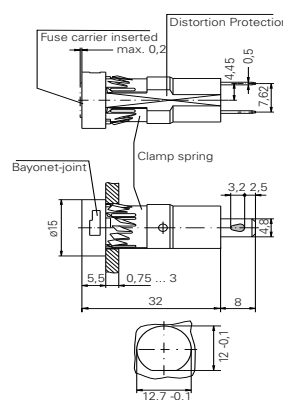
#### 820 Series



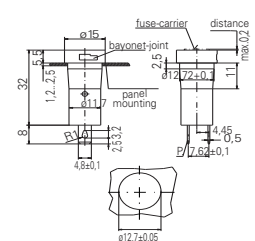
#### 821 Series



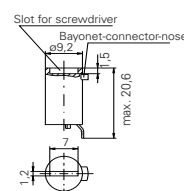
#### 823 Series



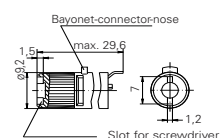
#### 824 Series



#### 835 Cap



#### 837 Cap



Specifications are subject to change without notice. Application testing is strongly recommended.




# 820/821/823/824 Series

## Panel Mount Enclosed Fuseholders

### Product Characteristics

|                               | 820 Series   | 820 20 Series  | 821 Series  | 823 Series  | 824 Series   | 824 20 Series  |
|-------------------------------|--|--|---|---|--|--|
| <b>Compatible Fuses</b>       | <b>5x20mm</b>  |  |   |   |  |  |
| <b>Materials</b>              | <b>Holder/Cap:</b><br>Black<br>Thermoplastic<br>UL 94 V-0  | <b>Holder/Cap:</b><br>White Thermoplastic<br>PBT, UL94 V-0<br><b>Nut:</b> Thermoplastics,<br>black, UL94 V-0 | <b>Holder/Cap:</b><br>Thermoplastic<br>black, UL94 V-0  | <b>Holder/Cap:</b><br>Black Thermoplastic<br>UL94 V-0   | <b>Holder/Cap:</b><br>Thermoplastic<br>UL 94V-0, black | <b>Holder/Cap:</b><br>Thermoplastic<br>UL94 V-0, white |
|                               | <b>Metal Parts:</b> Copper alloy, corrosion protected  |  |   |   |  |  |
|                               |  |  |   | <b>Clamp Spring:</b><br>Spring steel,<br>non-treated  |  |  |
|                               | <b>Terminals:</b><br>Solderable, tinned  |  |   |   |  |  |
| <b>Electrical Data (23°C)</b> | <b>Rated Voltage:</b> 250V   |  |   |   |  |  |
|                               | <b>Rated Current:</b> 6.3A (VDE) 16A (UL/CSA)  |  |   |   |  |  |
|                               | <b>Rated Power:</b><br>2.5 W (VDE)   | <b>Rated Power:</b><br>2.5 W (VDE)   | <b>Rated Power:</b><br>2.5 W (VDE)  | <b>Rated Power:</b><br>4 W (VDE)  | <b>Rated Power:</b><br>4 W                             |  |
| <b>Mounting</b>               | 12.7mm diameter D-hole or double D-hole<br>Admissible torque on plastic hex nut is<br>1.2Nm            |  | 12.7mm diameter<br>D-hole or double D-hole<br>(panel 1mm - 4.5mm)<br>Admissible torque on<br>plastic hex nut is 1.2Nm | Pluggable with<br>clamping spring into<br>12.7mm diameter<br>D-hole (panel thickness<br>0.75mm-3mm) | Pluggable (panel thickness 1.2 mm-2.5 mm)              |  |
| <b>Terminals</b>              | Solderable or 4.8mm quick connect-fits 0.5mm tab   |  |   |   |  |  |
| <b>Protection Category</b>    | IP 40 (IEC 60529) PC2 (IEC 60127-6)  |  |   |   |  |  |
| <b>Operating Temperature</b>  | -25°C to +70°C   |  |   |   |  |  |
| <b>Climatic Test</b>          | -25 °C/+70 °C/21 days (IEC 60068-2-1...3)  |  |   |   |  |  |
| <b>Stock Conditions</b>       | +10°C to +60°C relative humidity ≤ 75% yearly average, without dew, maximum value for 30 days - 95%    |  |   |   |  |  |
| <b>Vibration Resistance</b>   | 24 cycles at 15 min. each (IEC 60068-2-6)10 - 60Hz at 0.75mm amplitude 60 - 2000Hz at 10g acceleration |  |   |   |  |  |
| <b>Contact Resistance</b>     | ≤ 5mΩ  |  |   |   |  |  |
| <b>Dielectric Strength</b>    | > 1.5 kV   |  |   |   |  |  |
| <b>Impulse Voltage</b>        | 4kV, 50Hz, 1min, dry   | 4kV with 1,2μs/50μs  |   | 4kV, 50Hz, 1 min., dry  |  |  |
| <b>Insulation Resistance</b>  | > 10 <sup>3</sup> MΩ (500 VDC, 1 min.)   |  |   |   |  |  |
| <b>Solderability</b>          | 235°C, 3 sec (Wave)<br>350°C, 1 sec.<br>(Solder Iron)  | 235°C, 2 sec. (Solder Bath) (IEC 60068-2-20)<br>350°C, 3 sec. (Solder Iron) (IEC 60068-2-20)                 |   | 235°C, 3 sec. (Wave) 350°C, 1 sec. (Soldering Iron)   |  |  |
| <b>Soldering Heat Resist</b>  | 260°C, 5 sec. (IEC 60068-2-20)   |  |   |   |  |  |
| <b>Min. Cross Section</b>     | Conductor - 2.5mm <sup>2</sup>   |  |   |   |  |  |
| <b>Marking</b>                | 820, 250 V, Approvals  |  | 821, 250V, Approvals  | 823, 250V, Approvals  | 824, 250V, Approvals                                   |  |
| <b>Unit Weight</b>            | 4.0g (Holder) / 1.6g<br>(835) / 2.2g (837)   | 4.0 g (820) / 1.6 g<br>(835)   | 4.0g (821) / 1.6g<br>(835) / 2.2g (837)   | 3.8g (Holder) / 1.6g<br>(835) / 2.2g (837)  | 3.3g (824) / 1.6g<br>(835) / 2.2g (837)                | 3.3g (824) / 1.6g<br>(835) / 2.2g (837)                |

### Agency Approval

| Agency  | Agency File Number |        |        |         |        |   |
|---|--------------------|--------|--------|---------|--------|---|
|  | 132225             | 125183 | 135536 | 122096  | 122098 | - |
|  | E 70164            | E70164 | E70164 | E 70164 | E70164 | - |
|  | 47574              | 47574  | 47574  | 47574   | 47574  | - |

### Ordering Information

|                                 |  |                    |                    |                    |                    |                    |
|---------------------------------|--|--------------------|--------------------|--------------------|--------------------|--------------------|
| <b>Ordering Number: Holders</b> | <b>82000000005</b>   | <b>82000000205</b> | <b>82100000005</b> | <b>82300000005</b> | <b>82400000005</b> | <b>82400000205</b> |
| <b>Ordering Number: Caps</b>    | Flush Mount Type: <b>83500000005</b> / <b>83500000205</b><br>Finger Grip Type <b>83700000005</b> |                    |                    |                    |                    |                    |
| <b>Packaging</b>                | Bulk 100 Pcs all items listed above  |                    |                    |                    |                    |                    |

**Disclaimer Notice** - Information furnished is believed to be accurate and reliable. However, users should independently evaluate the suitability of and test each product selected for their own applications. Littelfuse products are not designed for, and may not be used in, all applications. Read complete Disclaimer Notice at: [www.littelfuse.com/disclaimer-electronics](http://www.littelfuse.com/disclaimer-electronics).

单击下面可查看定价，库存，交付和生命周期等信息

[>>Littelfuse\(美国力特\)](#)