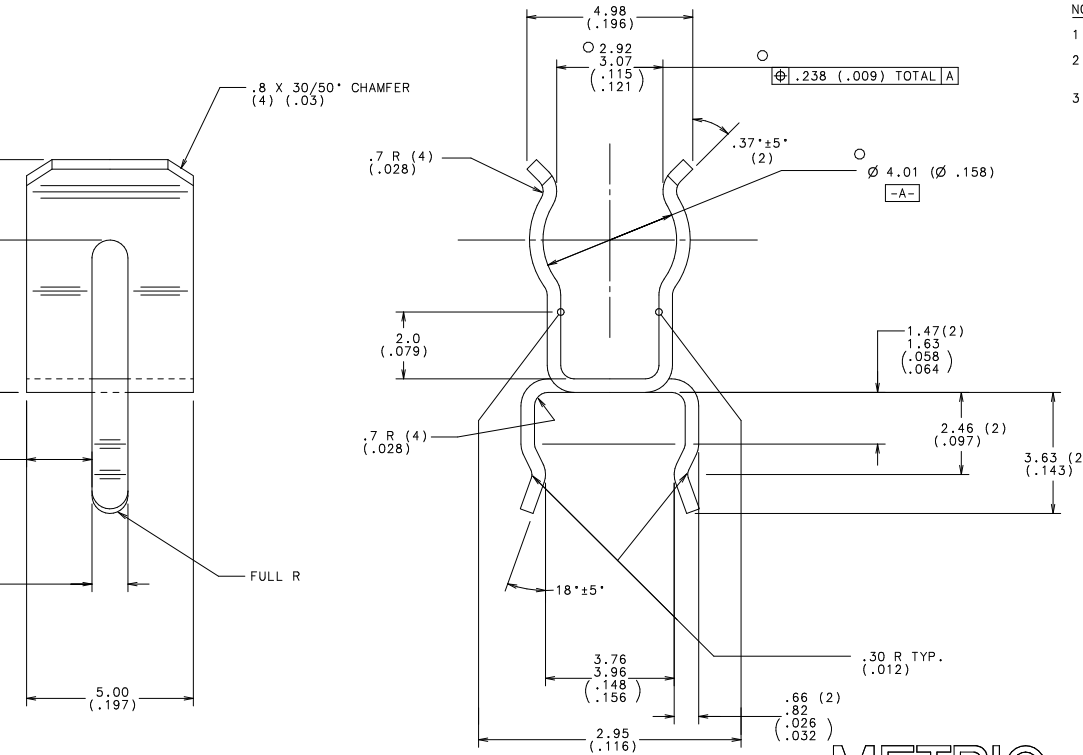


SUGGESTED MOUNTING HOLE PATTERN
FOR 4.5 X 15mm FUSE (2AG)
SCALE = 4:1



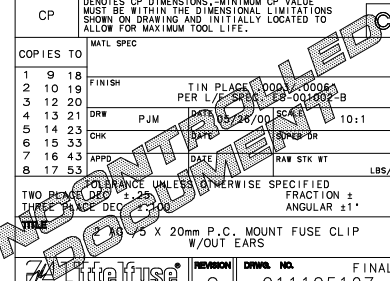
NOTES:

1. DECIMAL EQUIVALENT = (.XXX)
2. TOOLING MUST ALSO BE CAPABLE OF PRODUCING PART No. 01110501Z.
3. HEAT TREAT 600°F FOR 2 HOURS.

NO	COMPONENT NO	DESCRIPTION	QTY/M	U/M
2	010113	HIGH PURITY TIN	.015	LB
1	046184	BeCu .41(.016) THICK	.858	LB

BILL OF MATERIAL

UNLESS OTHERWISE SPECIFIED, DIMENSIONS DO NOT INCLUDE PLATING.				
○	DENOTES CRITICAL CHARACTERISTICS.			
CPK	DENOTES CPK DIMENSIONS, -MINIMUM CPK VALUE			
(ST)	DENOTES A CHARACTERISTIC THAT PROVIDES AN INDICATION OF PROCESS PERFORMANCE, PROCEDURE FOR MEASUREMENT AND TRACKING TO BE DEFINED IN LITTELFUSE INSPECTION INSTRUCTIONS.			
CP	DENOTES CP DIMENSIONS, -MINIMUM CP VALUE MUST BE WITHIN THE DIMENSIONAL LIMITATIONS SHOWN ON DRAWING AND INITIALLY LOCATED TO ALLOW FOR MAXIMUM TOOL LIFE.			
MATERIAL SPEC				
COPIES TO				
1	9	18		
2	10	19	FINISH	
3	12	20	TIN PLATE (0001) .0005 PER L / SRB ES-001002-B	
4	13	21	DRW	PJM
5	14	22	DATE: 05/26/00 SCALE: 10:1	
6	15	23	CHK	DATE: SUPER DR
7	16	24	TPPS	DATE: RAB STR WT
8	17	25		LBS/M
TOLERANCE UNLESS OTHERWISE SPECIFIED FRACTION ± ANGULAR ±				
TWO PLACE DEC ± .25				
THREE PLACE DEC ± .010				
TITLE: 2 X 0.5 X 20mm P.C. MOUNT FUSE CLIP W/OUT EARS				
REVISION: C				
DRAW. NO. 01110512Z				
FINAL				



单击下面可查看定价，库存，交付和生命周期等信息

[>>Littelfuse\(美国力特\)](#)