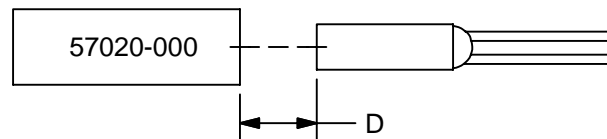


ELECTRICAL

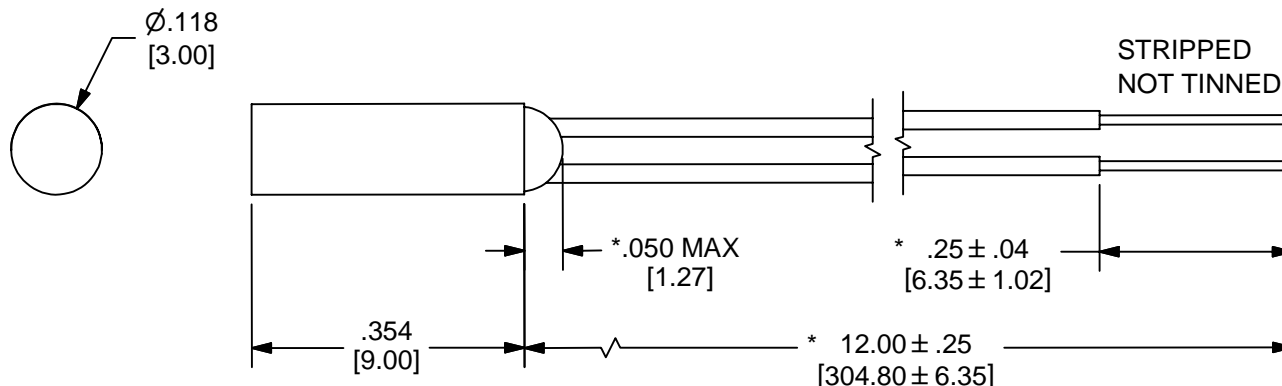
Contact Type: Form A
 Contact Rating: 5 W Max.
 Voltage, Switching: 150 V DC Max.
 Voltage, Breakdown: 230 V DC Min.
 Current, Switching: .35 A Max.
 Current, Carry: .50 A Max.
 Contact Resistance, Initial: .550 Ohm Max.

PHYSICAL

Capsule: Black Polypropylene
 Encapsulant: Black Epoxy
 Leads: 30 AWG PTFE MIL-W-16878/6, Black
 Actuator: 57020-000
 Actuate Distance: .175" [4.45] MIN.
 Deactuate Distance: .290" [7.37] MAX.



IDENTIFICATION



59010-010
XXXX

4 DIGIT DATE CODE

Dimensions are in Inches [mm]
 Tolerances unless otherwise noted:
 .X: $\pm .1$, .XX: $\pm .01$, .XXX: $\pm .005$, Angular: $\pm 1/2^\circ$
 * Denotes Critical Dimensions

ORIGINAL DCR NO. L1767	DRAWN BY: PS	DATE: 31-AUG-06
	APP'D BY: PS	DATE: 24-Oct-06

HAMLIN	PROPRIETARY NOTE: THE INFORMATION ON THIS DRAWING IS THE CONFIDENTIAL PROPERTY OF HAMLIN. THIS DRAWING MUST NOT BE MADE PUBLIC OR COPIED UNLESS AUTHORIZED IN WRITING BY HAMLIN. THIS DRAWING IS SUBJECT TO RETURN UPON DEMAND.
	DESCRIPTION OF REVISION: ACTIVATION AND CR LIMITS ADDED, MAX REMOVED FROM .118" DIMENSION

SHEET: 1 of 1	DCR NO. L3040	REV. AB
DRAWN BY: PS	DATE: 20-MAR-07	
APP'D BY: PS	DATE: 26-Mar-07	

单击下面可查看定价，库存，交付和生命周期等信息

[>>Littelfuse\(美国力特\)](#)