

Specification Status: Preliminary

Maximum Electrical Rating

Operating Voltage: 12Vdc
Interrupt Current: 100A

Leads: Nickel
0.125mm nominal thickness

Tape: None

Solder: Lead-free

Marking: None

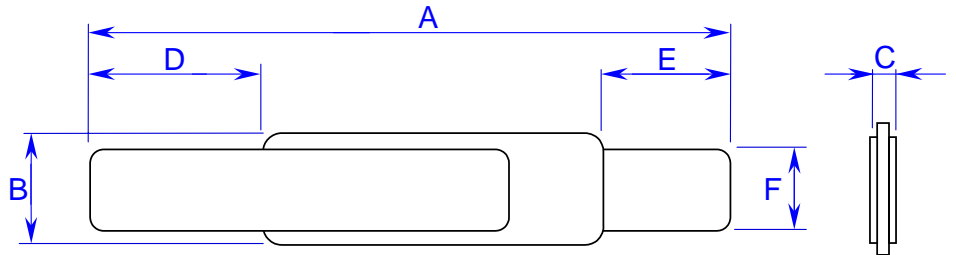


TABLE I. DIMENSIONS:

	A		B		C		D		E		F	
	MIN	MAX	MIN	MAX	MIN	MAX	MIN	MAX	MIN	MAX	MIN	MAX
mm:	23.0	24.5	2.9	3.1	---	0.7	5.2	7.5	4.3	5.7	2.4	2.6
in*:	(0.91)	(0.96)	(0.11)	(0.12)	--	(0.03)	(0.20)	(0.30)	(0.17)	(0.22)	(0.09)	(0.10)

*Rounded off approximation

TABLE II. PERFORMANCE RATINGS: As measured in Mueller Kelvin Clips model BU-75K.

I HOLD	CURRENT TRIP LIMITS								TIME TO TRIP		REFERENCE RESISTANCE		ONE-HOUR POST-TRIP RESISTANCE		TRIPPED-STATE POWER DISSIPATION
	AMPS AT 0°C		AMPS AT 25°C		AMPS AT 60°C		AMPS AT 80°C		SECONDS AT 25°C, 8.75A		OHMS AT 25°C		OHMS AT 25°C		WATTS AT 25°C, 12V MAX
HOLD	HOLD	TRIP	HOLD	TRIP	HOLD	TRIP	HOLD	TRIP	MIN	MAX	MIN	MAX	MIN	MAX	MAX
1.75	2.4	5.6	1.75	4.2	0.8	2.0	---	---	---	5	0.017	0.031	0.017	0.062	1.4

Agency Recognitions: UL, TUV, CSA
Reference Documents: PS300
Precedence: This specification takes precedence over documents referenced herein.
Effectivity: Reference documents shall be the issue in effect on the date of invitation for bid.
CAUTION: Operation beyond the rated voltage or current may result in rupture, electrical arcing or flame.

Materials Information:

ROHS Compliant

Directive 2002/95/EC
Compliant

ELV Compliant

Directive 2000/53/EC
Compliant

Pb-Free



单击下面可查看定价，库存，交付和生命周期等信息

[>>Littelfuse\(美国力特\)](#)