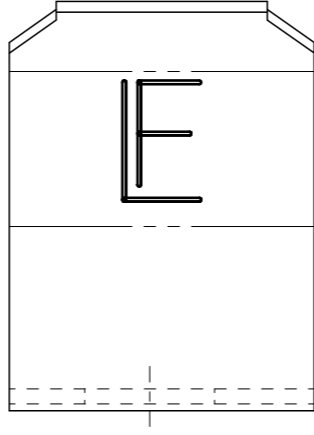
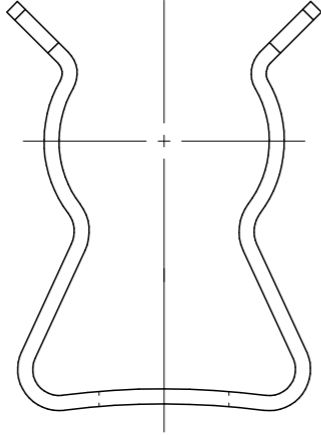
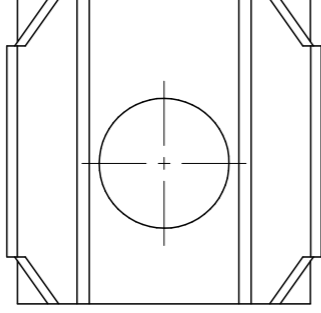


MATERIAL	PLATING	NOM. PLATING WT. (GRS)	VENDOR
BRASS	NICKEL /COPPER	Ni = .015: Cu = .003	FORMCO



NOTE :

FUSE CLIP 104012
 BRIGHT NICKEL PLATED
 .0001 MIN.

UNLESS OTHERWISE SPECIFIED, DIMENSIONS DO NOT INCLUDE PLATING.
 CPK DENOTES CRITICAL CHARACTERISTICS.
 CPK DENOTES CPK DIMENSIONS, -MINIMUM CPK VALUE
 CPK DENOTES A CHARACTERISTIC THAT PROVIDES AN INDICATION OF PROCESS PERFORMANCE. PROCEDURE FOR MEASUREMENT AND TRACKING TO BE DEFINED IN THE TELLFUSE INSPECTION INSTRUCTIONS.
 CPK DENOTES CP DIMENSIONS, -MINIMUM CP VALUE (MUST BE WITHIN THE DIMENSIONAL LIMITATIONS SHOWN ON DRAWING AND INITIALLY LOCATED TO ALLOW FOR MAXIMUM TOOL LIFE.

2	010104	NICKEL ANODE	.038	LB
1	104012	FUSE CLIP	1000	EA
NO	COMPONENT NO	DESCRIPTION	QTY/M	U/M

BILL OF MATERIAL

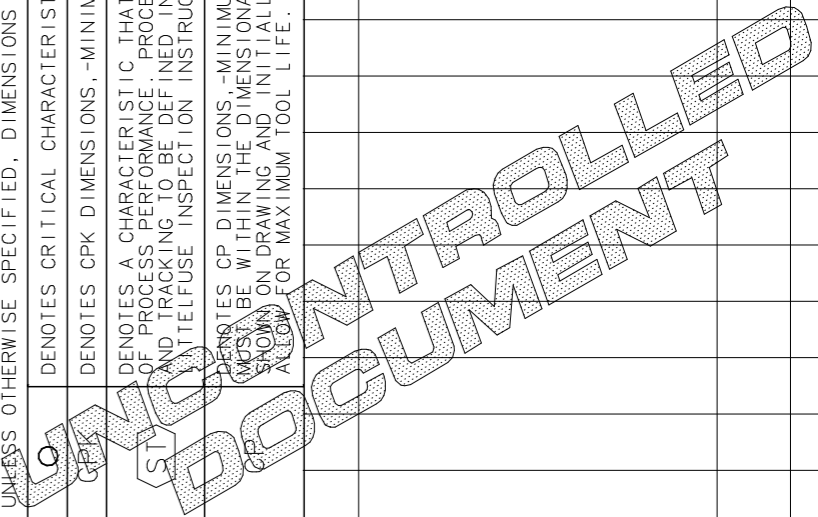
MATERIAL SPEC		FINISH		SEE NOTE
COPIES TO	DRW	PJM	DATE	08/02/02
1	9	18	SCALE	4 : 1
2	10	19	CHK	SUPER DRW
3	12	20	APPD	RAW STK WT
4	13	21	TOLERANCE UNLESS OTHERWISE SPECIFIED	
5	14	23	TWO PLACE DEC ± .01	
6	15	33	THREE PLACE DEC ± .005	
7	16	43	ANGULAR ± 1°	
8	17	53	TITLE	

LTR	REVISION	CHK	APD
-----	-----------------	-----	-----

D	60909 - REINSTATED 08/02/02 PJM		
F	85400D-ADDED CHART 3/02/07 RP		

FUSE CLIP

Littlefuse DES PLAINES, ILLINOIS 60016	REVISION E	DRAWG. NO. 01040002Z	FINAL
--	---------------	-------------------------	-------



单击下面可查看定价，库存，交付和生命周期等信息

[>>Littelfuse\(美国力特\)](#)