

INTERNAL PART NUMBER	CATALOG NUMBER	UPC CODE	DESCRIPTION
00970026XP	097026	0 79458 03491	MAXI FUSE PULLER

1	914-238	LABEL, UPC	200	EA
1	914-796	LABEL, BAR CODE	10	EAD
1	580690	CARTON	10	EA
1	896-451	BOX	200	EA
1	890-330-149	CARD (INSERT)	1000	EA
1	896-468	BLISTER	1000	EA
1	00970026N	MAXI FUSE PULLER	1000	EA
NO	COMPONENT NO	DESCRIPTION	QTY/M	U/M

BILL OF MATERIAL			
MATERIAL SPEC		FINISH	
COP/IES TO	DATE	SCALE	-----
1 9 18	9/24/98		
2 10 19		SUPER DRW	
3 12 20			
4 13 21		RAW STK WT	LBS/M
5 14 23			
6 15 33		TOLERANCE UNLESS OTHERWISE SPECIFIED	
7 16 43		TWO PLACE DEC ±.01 FRACTION ±	
8 17 53		THREE PLACE DEC ±.005 ANGULAR ±1°	
TITLE			
MAXI FUSE PULLER			
LTR		CHK	APD
REVISION			
A	07683 - RELEASED 9/24/98 BJJ		
B	80237C-CHG 896-436 TO 896-468 10/22/98 PJM		
C	80753C-CAD TO INT 08/27/00 PJM		

PLACE 1 MAXI FUSE PULLER 00970026N UNDER BLISTER 896-468 ON CARD 890-330-149 AND SEAL.

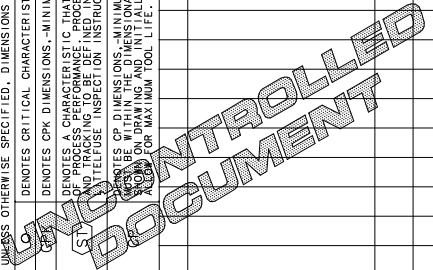
PLACE 5 CARDS IN BOX 896-451 AND LABEL, ON SMALLEST "END" PANEL, WITH 914-238 LABEL PRINTED TO GENERAL LABEL SPEC. LS-000001.

PLACE 20 PACKED BOXES IN OVERPACK CARTON 580690 AND SEAL WITH TAPE. LABEL END PANEL, IN LOWER RIGHT HAND CORNER, WITH 914-796 LABEL PRINTED TO GENERAL LABEL SPEC. LS-000003.

UNLESS OTHERWISE SPECIFIED, DIMENSIONS DO NOT INCLUDE PLATING.
 Q DENOTES CRITICAL CHARACTERISTICS.
 Q DENOTES CPK DIMENSIONS, -MINIMUM CPK VALUE
 Q DENOTES A CHARACTERISTIC THAT PROVIDES AN INDICATION OF THE PRESENCE OF DEFECTS. THE MEASUREMENT PROCEDURE FOR MEASUREMENT OF THIS CHARACTERISTIC IS TO BE DETERMINED BY THE SELF-INSPECTION INSTRUCTIONS.
 Q DENOTES CP DIMENSIONS, -MINIMUM CP VALUE
 Q DENOTES DIMENSIONS THAT ARE WITHIN THE DIMENSIONAL LIMITATIONS OF THE PROCESS FOR MAXIMUM TOOL LIFE.



 DES PLAINES, ILLINOIS 60016
 C
 DRAWING NO. 00970026XP
 FINAL



单击下面可查看定价，库存，交付和生命周期等信息

[>>Littelfuse\(美国力特\)](#)