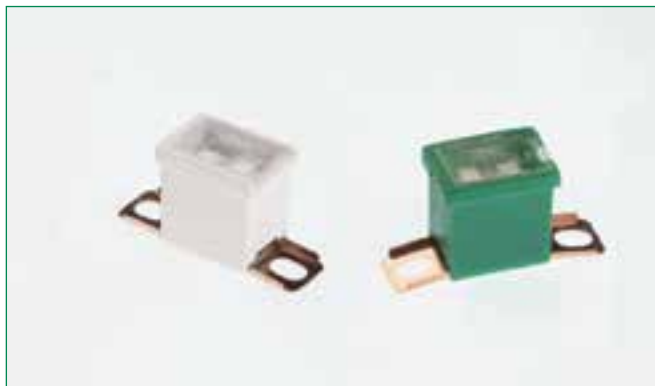


AUTO LINK PAL FUSES - 283B

RoHS



Specifications

Voltage Rating: 32 VDC
 Current Cycling: 24°C
 The fuses satisfy the performance requirements after 50% of the rated current is applied for 10,000 cycles. Each cycle consists of an interrupted current with the pattern of 5 minutes ON and 10 minutes OFF.
 Operating Temperature Range: -40°C to +125°C

Complies with JASO 0612

Ordering Information

Part Number	Package Size
0283xxx.MXJ-B	1000

Description

PAL fuses are commonly found on many Japanese and domestic built vehicles.

Time-Current Characteristics

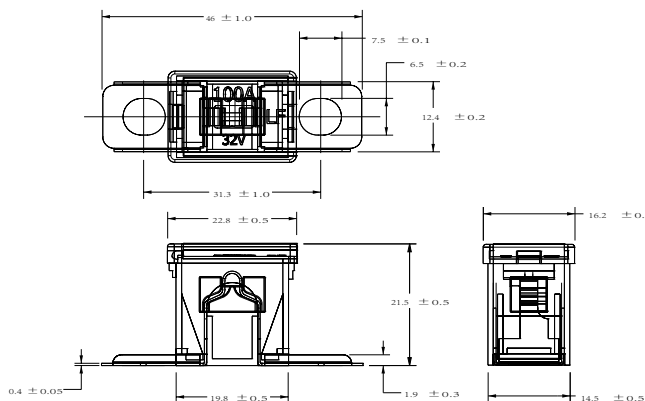
% of Rating	Opening Time Min / Max (s)
110	14,400 s
200	5 s / 100 s
350	0.2s / 7 s
600	0.040 s / 1 s

Ratings

Part Number	Current Rating (A)	Body Color
0283020.MXJ-B	20	LIGHT BLUE
0283030.MXJ-B	30	PINK
0283040.MXJ-B	40	GREEN
0283050.MXJ-B	50	RED
0283060.MXJ-B	60	YELLOW
0283070.MXJ-B	70	BROWN
0283080.MXJ-B	80	BLACK
0283100.MXJ-B	100	BLUE
0283120.MXJ-B	120	WHITE
0283140.MXJ-B	140	REDDISH BROWN

Dimensions

Dimensions in mm



单击下面可查看定价，库存，交付和生命周期等信息

[>>Littelfuse\(美国力特\)](#)