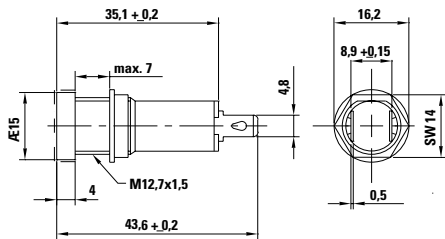


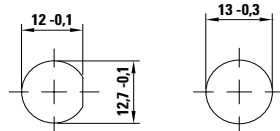
**870 Series Medical Grade Shock-Safe Holder for 5x20mm Fuses**



**Dimensions 870**



**Includes Captive Cap**



**Panel alternatives**

**Product Characteristics 870**

<b>Compatible Fuses</b>	<b>For Shocksafe, Medical Grade, 5x20mm fuses</b>
<b>Materials</b>	<b>Holder/Cap:</b> Black Thermoplastic, UL 94V0 <b>Metal Parts:</b> Copper alloy, corrosion protected <b>Terminals:</b> Solderable, tinned
<b>Electrical Data (23°C)</b>	<b>Rated Voltage:</b> 250V <b>Rated Current:</b> 10A <b>Rated Power:</b> 1.6W (VDE)
<b>Mounting</b>	12.7mm diameter D-hole or 13mm round hole Admissible torque on plastic hex nut is 1.2Nm
<b>Terminals</b>	Solderable or 4.8mm quick connect-fits 0.5mm tab
<b>Protection Class &amp; Category</b>	IP 40 (IEC 60529) PC3 (IEC 60127-6) Live parts are fully inaccessible to a 1mm diameter probe
<b>Operating Temperature</b>	-40°C to +85°C
<b>Climatic Test</b>	-40°C/+85°C/21 days (IEC 60068-2-1...3)
<b>Stock Conditions</b>	0°C to 60°C, max. 70% R.H.
<b>Contact Resistance</b>	≤ 5mΩ at 20 mV
<b>Impulse Voltage</b>	4 kV, 50Hz, 1 min., dry
<b>Insulation Resistance</b>	> 10 <sup>3</sup> MΩ (500VDC, 1 min.)
<b>Solderability</b>	350°C, 2 sec. acc. to IEC 60068-2-20, Test Ta method 2
<b>Soldering Heat Resistance</b>	350°C, 10 sec. (IEC 60068-2-20) acc. to IEC 60068-2-20, Test Tb, method 2
<b>Minimum Cross Section</b>	Conductor - 2.5mm <sup>2</sup>
<b>Marking</b>	870, 250V, Agency Approvals
<b>Unit Weight</b>	5.6g

Refer to [Fuseology](#) for information on proper fuseholder re-rating.

**Additional Information**



**Datasheet**



**Resources**



**Samples**

**Agency Approvals**

Agency	Agency File Number
	40003282
	E70164

**Ordering Information**

Ordering Number	Packaging
<b>87000001009</b>	Bulk 100 Pcs

单击下面可查看定价，库存，交付和生命周期等信息

[>>Littelfuse\(美国力特\)](#)