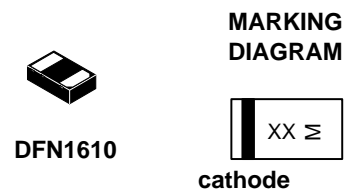


# LTVS16H5.0ET5G

**LTVS16H5.0ET5G**

## Features

- 5V uni-directional ESD diode
- Low clamping voltage
- Complies with IEC 61000-4-2 standards:
  - Air discharge:  $\pm 30\text{kV}$
  - Contact discharge:  $\pm 30\text{kV}$
- RoHS Compliant



XX = Specific Device Code  
 M = Month Code

## Ordering information

Device	Marking	Shipping
LTVS16H5.0ET5G	B1	8000/Tape&Reel

## Absolute Maximum Ratings ( $T_A=25^\circ\text{C}$ unless otherwise specified)

Parameter	Symbol	Value	Unit
Peak Pulse Power (8/20 $\mu\text{s}$ )	Ppk	1800	W
Peak Pulse Current (8/20 $\mu\text{s}$ )	I <sub>PP</sub>	150	A
Operating Temperature Range	T <sub>J</sub>	-55 to +125	$^\circ\text{C}$
Storage Temperature Range	T <sub>stg</sub>	-55 to +150	$^\circ\text{C}$

## Electrical Characteristics ( $T_A=25^\circ\text{C}$ unless otherwise specified)

Parameter	Symbol	Min	Typ	Max	Unit	Test Condition
Reverse Working Voltage	V <sub>RWM</sub>			5	V	
Breakdown Voltage	V <sub>BR</sub>	6		7.1	V	I <sub>T</sub> = 1mA
Reverse Leakage Current	I <sub>R</sub>			0.6	$\mu\text{A}$	V <sub>R</sub> = 5V
Clamping Voltage	V <sub>C</sub>			10.8	V	I <sub>PP</sub> = 80A (8 x 20 $\mu\text{s}$ pulse)
Junction Capacitance	C <sub>J</sub>		800		pF	V <sub>R</sub> = 0V, f = 1MHz

**Note:** Electrical parameters are only for die, performance may alter after assembly.

# LTVS16H5.0ET5G

## Typical Performance Characteristics (T<sub>A</sub>=25°C unless otherwise Specified)

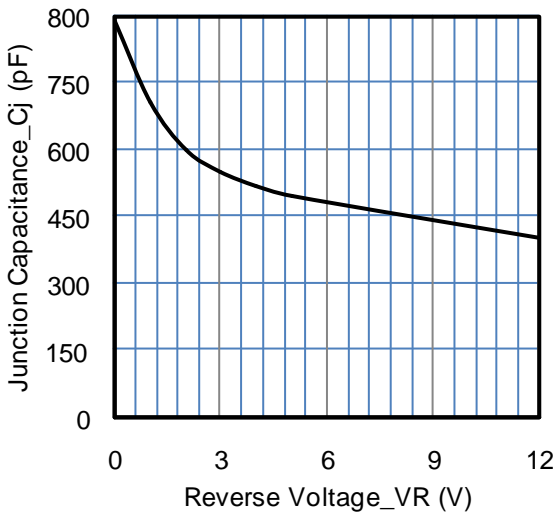


Fig1. Junction Capacitance vs. Reverse Voltage

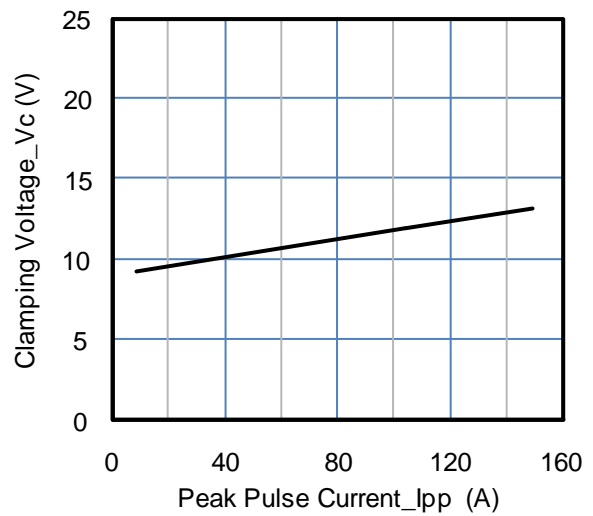


Fig2. Clamping Voltage vs. Peak Pulse Current

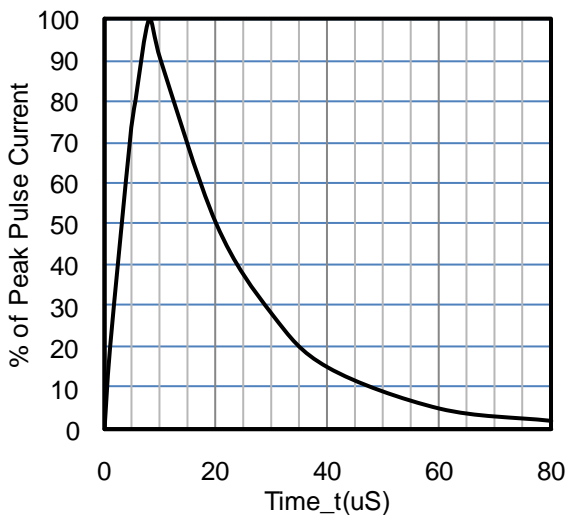


Fig3. 8 X 20uS Pulse Waveform

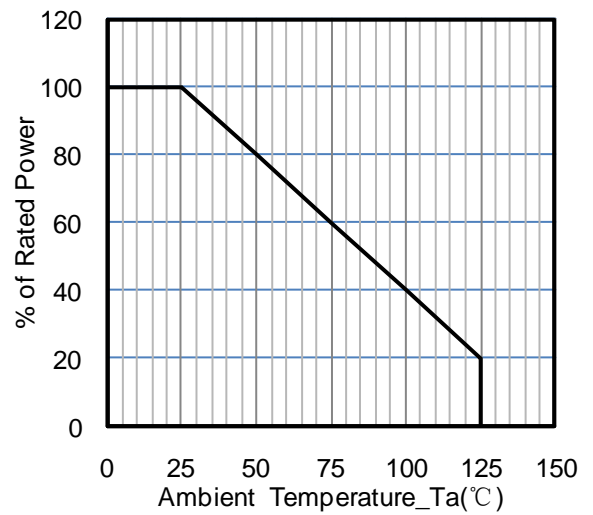


Fig4. Power Derating Curve

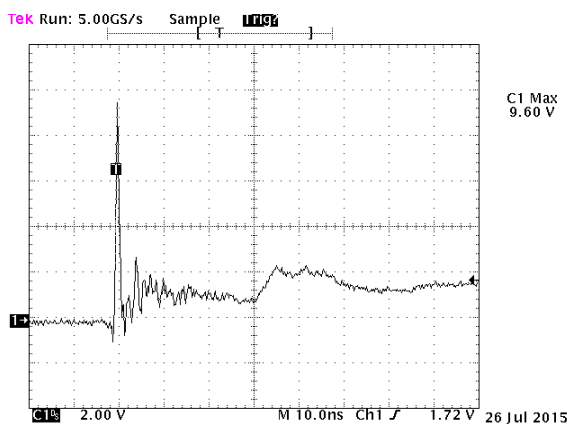


Fig 5. ESD Clamping Voltage  
Positive 8 kV Contact per IEC61000-4-2

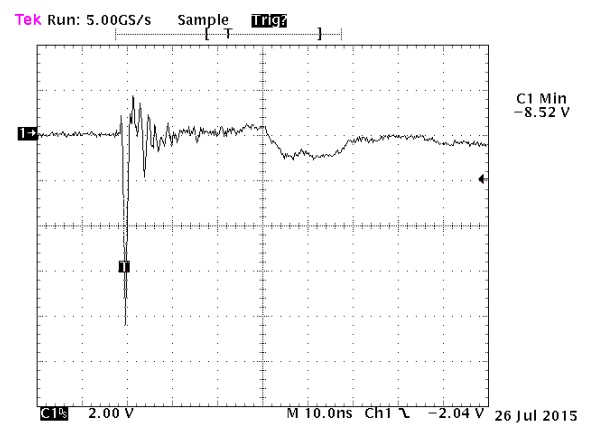
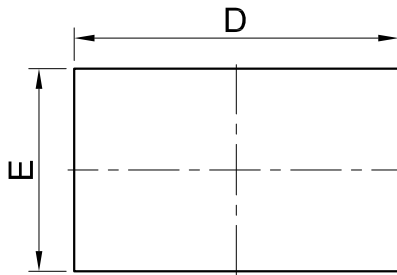


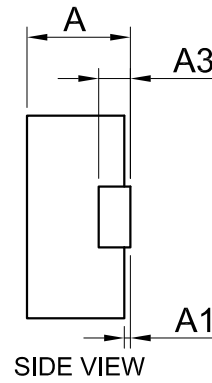
Fig 6. ESD Clamping Voltage  
Negative 8 kV Contact per IEC61000-4-2

# LTVS16H5.0ET5G

## OUTLINE AND DIMENSIONS

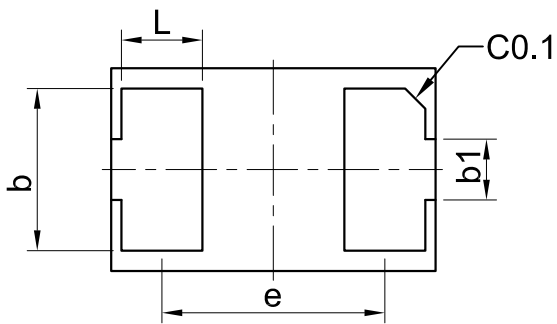


TOP VIEW



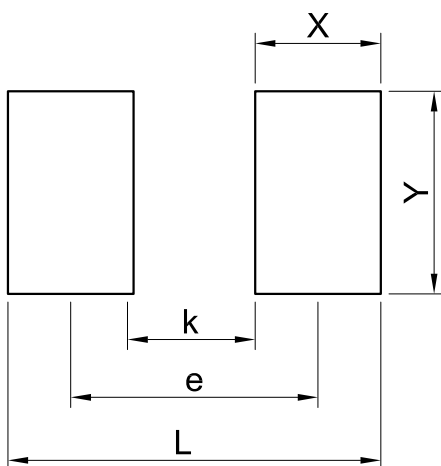
SIDE VIEW

DFN1610			
DIM	MIN	NOR	MAX
A	0.46	0.51	0.56
A1	0.01	0.03	0.05
b	0.75	0.80	0.85
b1	0.25	0.30	0.35
D	1.55	1.60	1.65
E	0.95	1.00	1.05
e	1.10BSC		
L	0.35	0.40	0.45
A3	0.127REF.		
All Dimensions in mm			



BOTTOM VIEW

## SOLDERING FOOTPRINT



DFN1610	
DIM	(mm)
X	0.62
Y	1.00
L	1.84
e	1.22
K	0.60

单击下面可查看定价，库存，交付和生命周期等信息

[>>LRC\(乐山无线电\)](#)