

# LBTN180Y3T1G

## S-LBTN180Y3T1G

NPN power transistors

### 1. FEATURES

- High current
- High power dissipation capability
- We declare that the material of product compliance with RoHS requirements and Halogen Free.
- S- prefix for automotive and other applications requiring unique site and control change requirements; AEC-Q101 qualified and PPAP capable.

### 2. APPLICATIONS

- Linear voltage regulators
- Low-side switches
- Battery-driven devices
- Power management
- MOSFET drivers
- Amplifiers

### 3. DEVICE MARKING AND ORDERING INFORMATION

Device	Marking	Shipping
LBTN180Y3T1G	B	1000/Tape&Reel

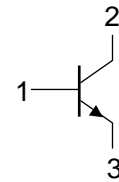
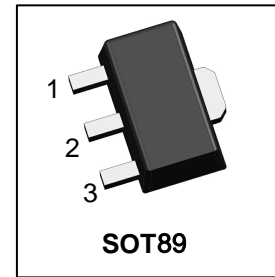
### 4. MAXIMUM RATINGS(Ta = 25°C)

Parameter	Symbol	Limits	Unit
Collector–Emitter Voltage	VCEO	80	V
Collector–Base Voltage	VCBO	100	V
Emitter–Base Voltage	VEBO	5	V
Collector Current	IC	1	A
Peak collector current(tp≤1 ms)	ICM	2	A
Base current	IB	0.3	A
Peak base current(tp≤1 ms)	IBM	0.3	A

### 5. THERMAL CHARACTERISTICS

Parameter	Symbol	Limits	Unit
Total Device Dissipation, FR-4 Board (Note 1) @ TA = 25°C Derate above 25°C	PD	550 4.4	mW mW/°C
Thermal Resistance, Junction–to–Ambient	RθJA	225	°C/W
Junction–to–Case	RθJC	50	°C/W
Junction and Storage temperature	TJ,Tstg	-65~+150	°C

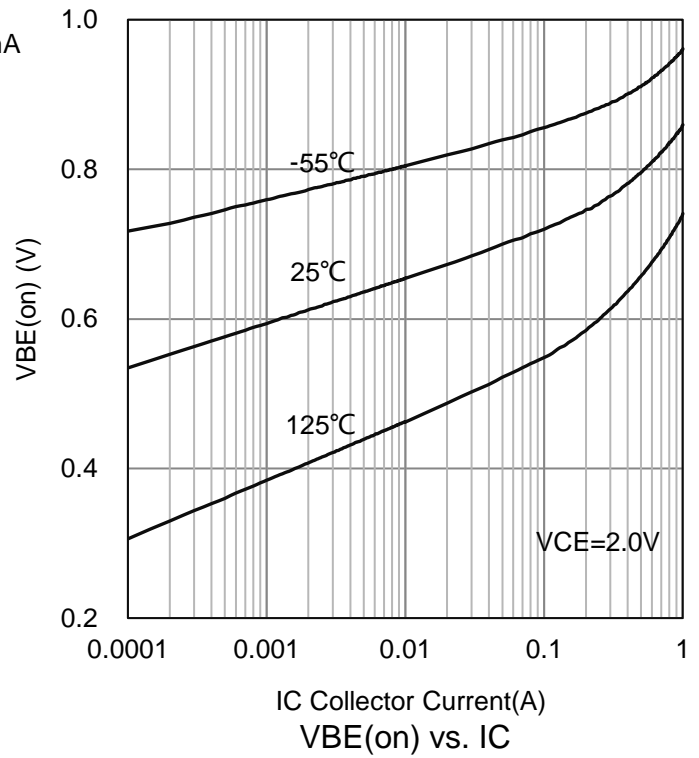
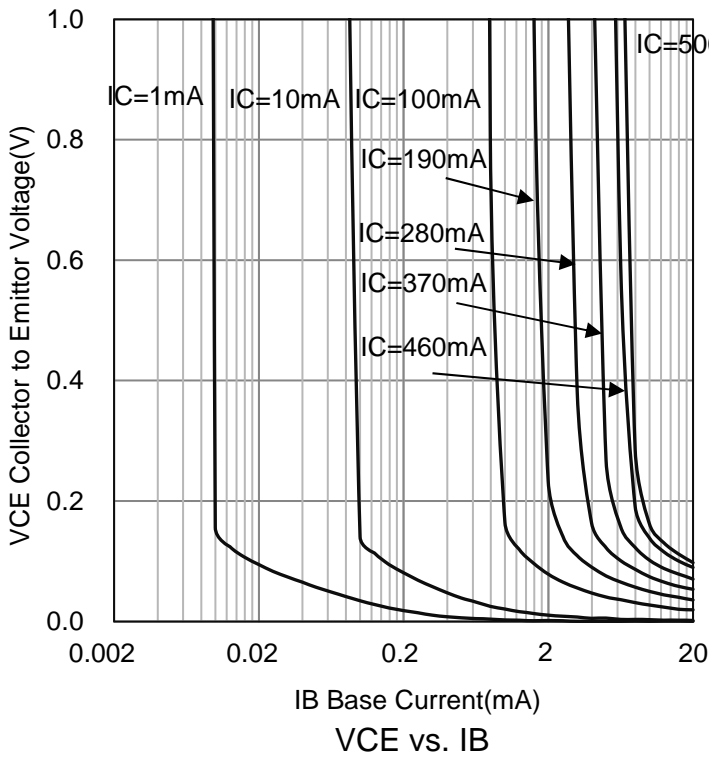
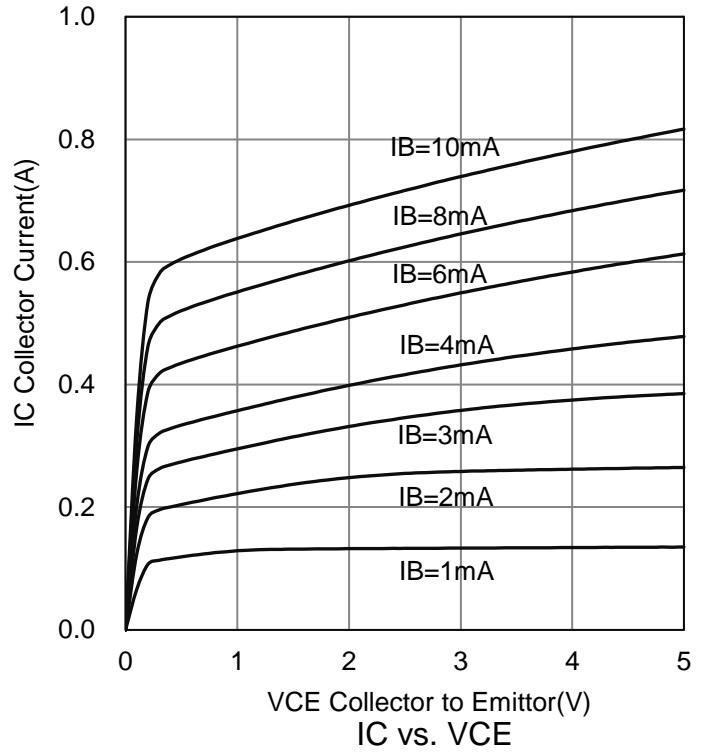
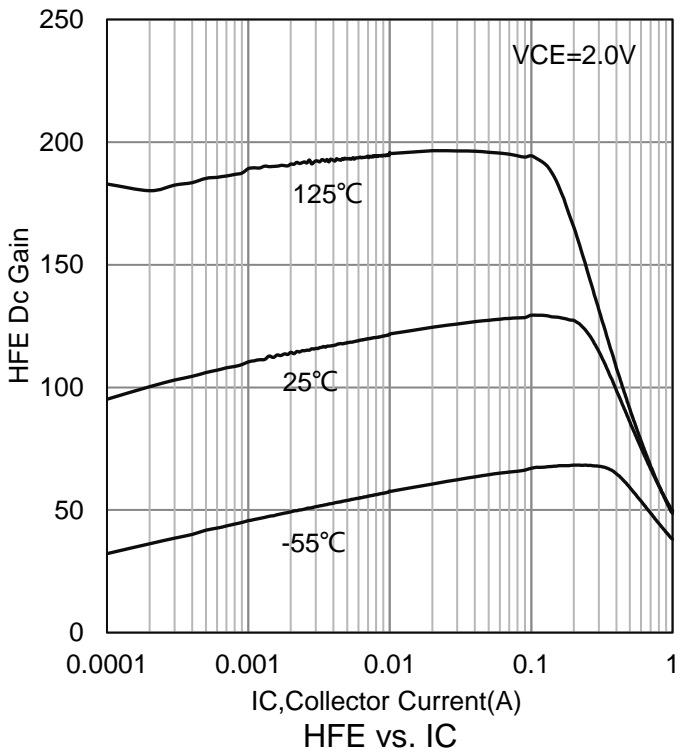
1.PCB Size:30.0mm×25.0mm×1.6mm,FR-4 Board;



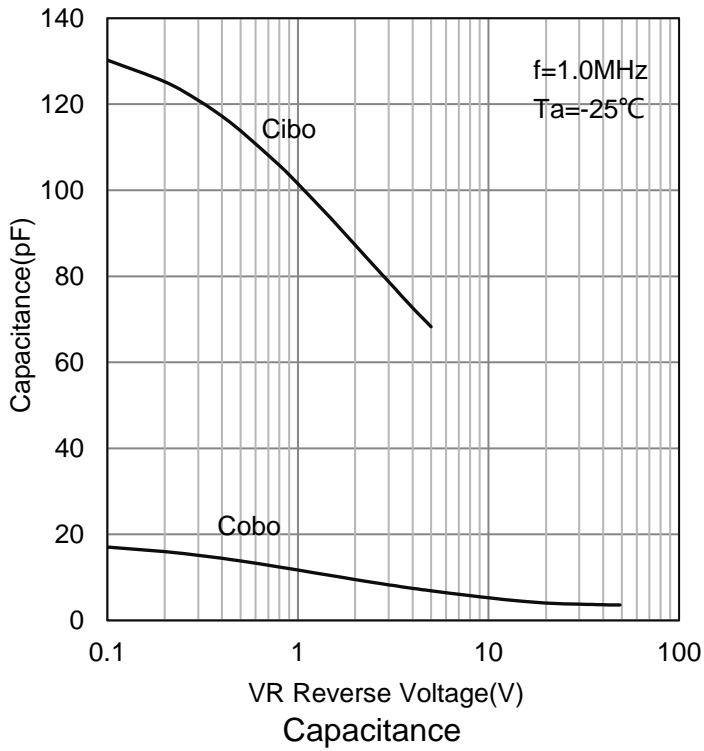
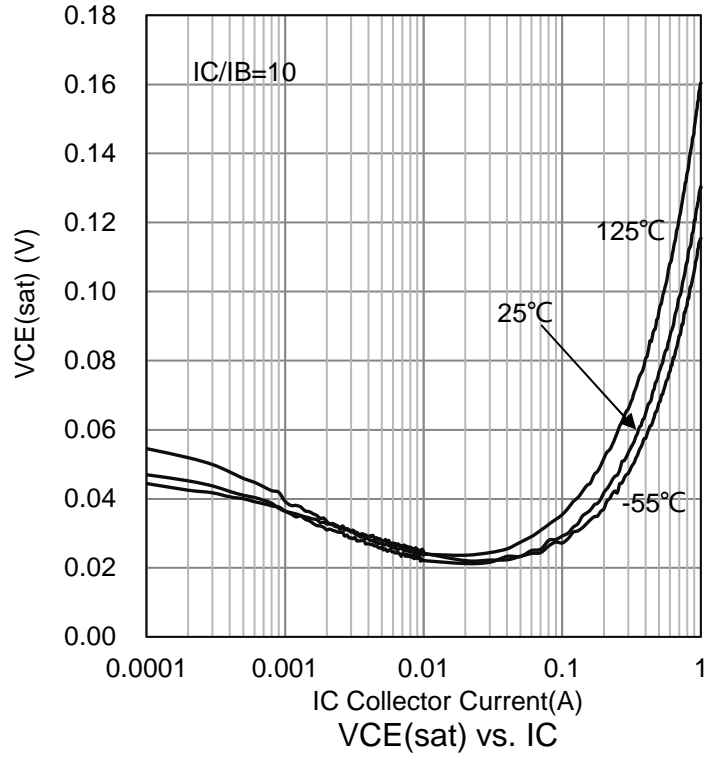
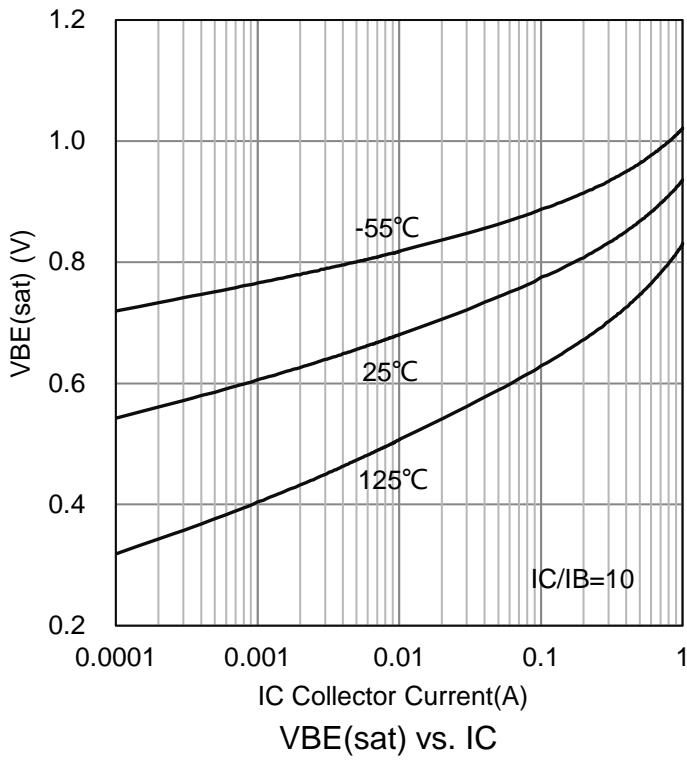
**6. ELECTRICAL CHARACTERISTICS (Ta= 25°C)**

Characteristic	Symbol	Min.	Typ.	Max.	Unit
Collector–Emitter Breakdown Voltage (IC = 1 mA, IB = 0)	VBR(CEO)	80	-	-	V
Collector–Base Breakdown Voltage (IC = 100 µA, IE = 0)	VBR(CBO)	100	-	-	V
Emitter–Base Breakdown Voltage (IE = 100 µA, IC = 0)	VBR(EBO)	5	-	-	V
Collector Cutoff Current (VCB = 30 V, IE = 0 A) (VCB = 30 V, IE = 0 A, Tj = 150°C)	ICBO	-	-	100 10	nA µA
Emitter Cut-off Current (VEB = 5V, IC = 0)	IEBO	-	-	100	nA
Collector-Emitter cutoff Current (VCE = 80V, IB = 0)	ICEO	-	-	10	µA
DC Current Gain (VCE = 2 V, IC = 5 mA) (VCE = 2 V, IC = 150 mA) (VCE = 2 V, IC = 500 mA)	HFE	63 100 45	- - -	- 250 -	
Collector–Emitter Saturation Voltage (IC = 500 mA, IB = 50 mA)	VCE(sat)	-	-	0.5	V
Base-Emitter voltage (VCE = 2 V, IC = 500 mA)	VBE	-	-	1	V
Transition Frequency (VCE = 5 V, IC = 50 mA, f = 100 MHz)	fT	100	180	-	MHz
Collector Capacitance (VCB = 10 V, IE = ie = 0 A, f = 1 MHz)	Cc	-	6	-	pF

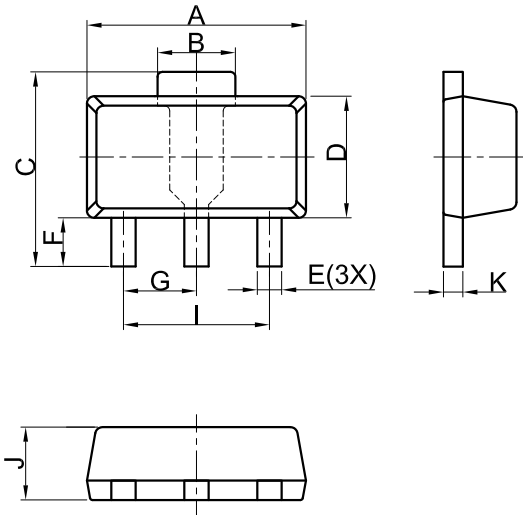
**7.ELECTRICAL CHARACTERISTICS CURVES**



7.ELECTRICAL CHARACTERISTICS CURVES(Con.)



**8.OUTLINE AND DIMENSIONS**

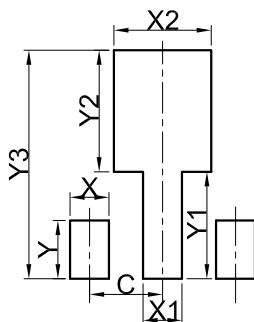


SOT89			
DIM	MIN	NOR	MAX
A	4.30	4.50	4.70
B	1.40	1.60	1.80
C	3.90	4.00	4.25
D	2.30	2.50	2.70
E	0.40	0.50	0.58
F	0.90	1.00	1.20
G	1.50 BSC		
I	3.00 BSC		
J	1.40	1.50	1.60
K	0.34	0.40	0.50
All Dimensions in mm			

**GENERAL NOTES**

1. Top package surface finish Ra0.4±0.2um
2. Bottom package surface finish Ra0.7±0.2um
3. Side package surface finish Ra0.4±0.2um
4. Protrusion or Gate Burrs shall not exceed 0.10mm per side.

**9.SOLDERING FOOTPRINT**



SOT89	
DIM	(mm)
X	0.80
Y	1.20
X1	0.80
Y1	2.20
X2	2.00
Y2	2.50
C	1.50
Y3	4.70

## DISCLAIMER

- Before you use our Products, you are requested to carefully read this document and fully understand its contents. LRC shall not be in any way responsible or liable for failure, malfunction or accident arising from the use of any LRC's Products against warning, caution or note contained in this document.
- All information contained in this document is current as of the issuing date and subject to change without any prior notice. Before purchasing or using LRC's Products, please confirm the latest information with a LRC sales representative.

单击下面可查看定价，库存，交付和生命周期等信息

[>>LRC\(乐山无线电\)](#)